

TITE-LOC HS

PRODUCT FEATURES

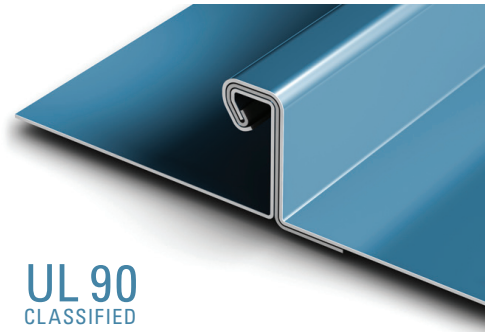
- 20 year non-prorated finish warranty
- Available in 3 variations - see profile drawings to right . Check local factory for panel condition availability.
- Maximum panel length of 64 feet (check local factory for longer lengths)

MATERIAL

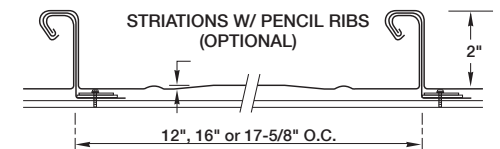
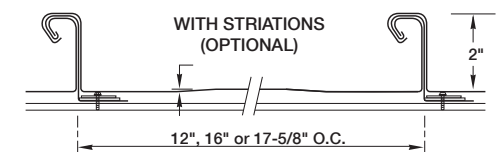
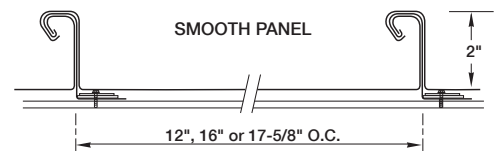
- 37 stocked colors (24 gauge steel)
- 13 stocked colors (22 gauge steel)
- 36 stocked colors (.032 aluminum)
- 20 stocked colors (.040 aluminum)
- Galvalume Plus available

*24 ga. and 22 ga. steel panels are UL-90 classified over solid substrate. See roof deck construction in Underwriter Laboratories roofing materials and systems directory.

Note: Tite-Loc HS is not available at all Petersen facilities. Check with local factory for availability.



UL 90
CLASSIFIED



SPECS: 12", 16" OR 17-5/8" O.C.
2" HIGH

