

RESILIENT FLOORING



RECYCLED MATERIALS

Innovative Flooring for Imaginative Minds

- Bolon®
- Chocflex™
- Debolon
- Finett®



866-968-3996
www.dzynspec.com

RESILIENT FLOORING



WOVEN VINYL FLOORING

Bolon® is the world leader of woven vinyl floor covering offering the warm, modern look of sisal. Its construction makes it easy to clean, as nothing penetrates below the surface. More contemporary looking than carpet and more colorful than natural sisal, Bolon comes in more than fifty appealing colors and textures that complement any setting.

Bolon can be cut in any direction without fraying or tearing, allowing designers to incorporate non-traditional curves and artistic shapes into their designs.

- Low maintenance - cleans like carpet, daily vacuum, periodic hot water extraction
- Never needs waxing, stripping or buffing
- Class 1 fire rating
- Stain resistant
- Dimensionally stable
- Non-slip and dries quickly
- Will not fray when cut
- Available in rolls or tiles

Common Uses: Retail, Hospitality, Healthcare



LEX SOLID
(6 colors)



LEX STRIPE
(6 colors)



LEX BLEND
(6 colors)



BKB
(16 colors)



RIPS SOLID
(8 colors)



RIPS BLEND
(8 colors)



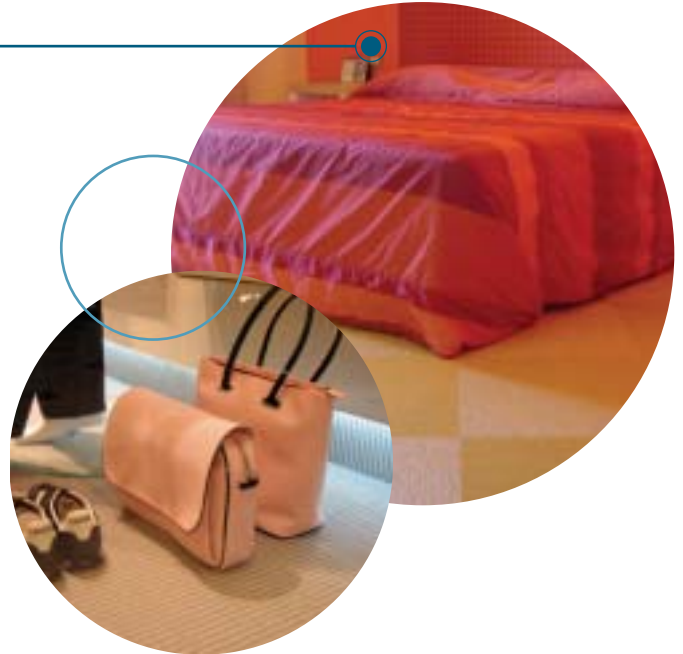
TILES
(18 colors)



TREND
(6 colors)



NOW
(4 colors)



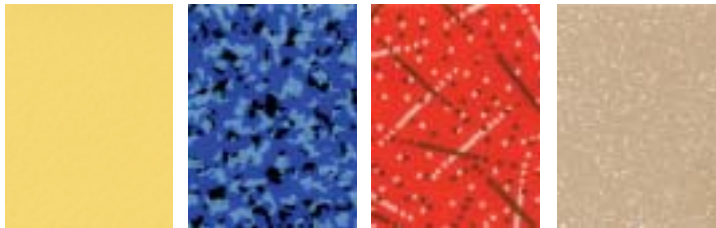
BOLON	DESCRIPTION
Material:	Vinyl, polyester, and glass fiber
Roll Sizes:	6'6" W x 81'8" L
Tile Sizes:	19.7" x 19.7"
Case Pack:	16 tiles per case (42.8 sq ft)
Total Weight:	Rolls - 0.63 lbs per sq ft Tiles - 0.87 lbs per sq ft
Total Thickness:	Rolls - 2.7 mm Tiles - 3.4 mm
Footstep Sound Reduction:	15 dB approx.

CHOCFLEX™ ACOUSTIC VINYL FLOORING

Chocflex™ comes in colors and patterns unlike any vinyl flooring you've seen before. Available in eight modern designs and more than 75 vivid colors, Chocflex is commercial rated and the ideal solution for low, medium or heavy traffic areas where durability, sound absorption and low maintenance are key considerations.

- Never needs waxing, stripping or buffing
- High levels of underfoot comfort
- Anti-static properties and acoustic absorption
- Product construction prevents fungal and bacterial growth

Common Uses: Healthcare, Education, Retail

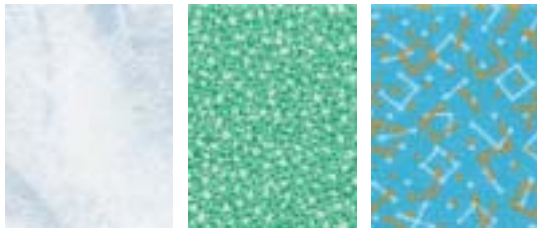


UNI
(23 colors)

FIORA
(14 colors)

RIGA
(8 colors)

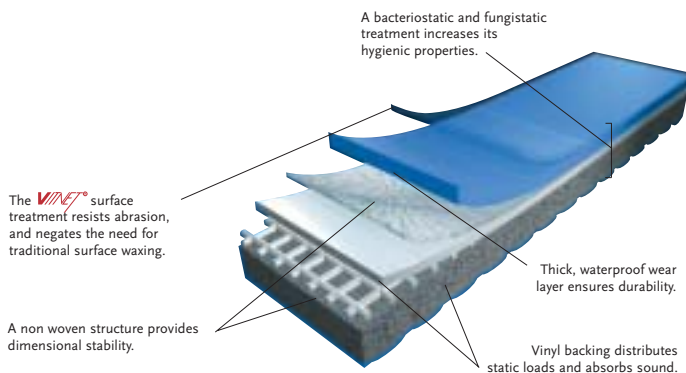
CRISTAL
(10 colors)



VANCOUVER
(4 colors)

GRANITO
(14 colors)

CHARLESTON
(7 colors)



CHOCFLEX	DESCRIPTION
Material:	Heavy duty acoustic vinyl
Roll Sizes:	4'11" W x 98'5" L
Custom Sizes:	4'11" W x lengths up to 98'5"
Tile Sizes:	19 ¹¹ / ₁₆ " x 19 ¹¹ / ₁₆ "
Case Pack:	20 tiles per case (53.2 sq ft)
Total Weight:	0.57 lbs. per sq ft
Total Thickness:	3.3 mm
Wear Layer Thickness:	0.62 mm
Footstep Sound Reduction:	17 dB approx.

Chocflex also offers one-piece stairtreads in lengths up to 36'11" for complete floor protection.

RESILIENT FLOORING



HIGH PERFORMANCE CONTRACT FLOORING

Debolon contract flooring creates a rich look without high expense or maintenance. Its multi-level construction makes it sound- and shock-absorbent, while its permanent 100% urethane varnish eliminates the need for harsh cleaning chemicals. Debolon is offered in three lines – Compact, Spezial and Comfort, which vary in technical properties.

- Never needs waxing, stripping or buffing
- Anti-static and antibacterial properties
- Very low VOC emissions
- Compact: offers extreme durability
- LifeTec® Spezial: offers performance and a wide design range to complement any application
- LifeTec® Comfort: offers a carpet feel underfoot and the industry's thickest wear layer



Common Uses: Healthcare, Hospitality, Retail



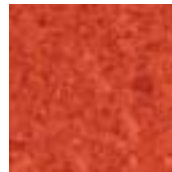
WOOD
(10 colors)



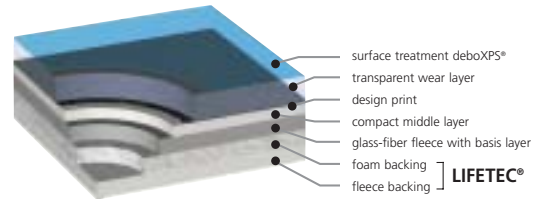
SOLID
(7 colors)



METALLIC
(5 colors)



SPECKLED
(22 colors)



RECYCLED CARPET

Finett® resilient recycled carpet's crush resistant patterns and fade resistant colors lend a fresh, stylish appearance to high traffic environments, while its greater than 50% recycled content makes it the environmentally responsible choice. **Common Uses:** Retail, Corporate, Education



Toll Free: 866-968-3996 • www.dzynspec.com

DzynSpec™ is a division of **matsinc.**