

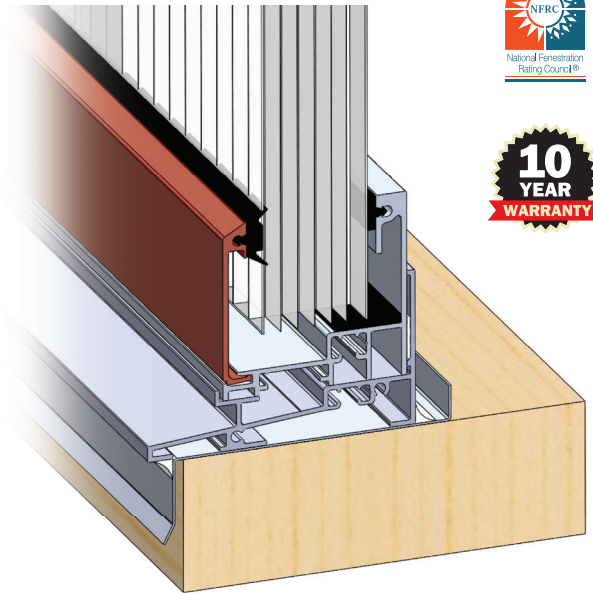
Technical Information Sheet



LumiWall Vertical Translucent Panel System

Comfortable, Diffused Daylighting

LumiWall is constructed with fully fabricated, lightweight, interlocking 40mm tongue and groove multiwall polycarbonate panels. It is a dry glaze system and offers optional polyurethane thermal breaks for improved thermal performance. The system has large span capabilities, is easily installed by commercial contractors, and requires no UV maintenance.



FEATURES

- System Depth: 2-3/4" Panel Frame, 4" Subsill
- Standard Subsill for Trouble Free Installation
- Sloped Sill Nose with Recessed Weeps for Maximum Drainage
- Polyurethane Thermal Breaks for Improved Thermal Performance
- Factory Finishes Meeting All AAMA Finish Standards
- No Exposed Fasteners
- NFRC Tested, 10 Year Warranty

York County Law Enforcement Training Facility, York, SC

LumiWall Vertical Translucent Panel System – Technical Information Sheet

PERFORMANCE

Air infiltration:

0.10 cfm/ft² @ 1.57psf per ASTM E283

Water Penetration:

12 psf per ASTM E547 and ASTM E331

Deflection:

L/100

Structural Capabilities:

- DP55 psf @ 5'-6" Vertical Span
- DP30 psf @ 6'-10" Vertical Span
- DP20 psf @ 8'-0" Vertical Span
- DP45 psf W/ HORIZONTAL SUPPORT @ 4'-0"

NFRC Performance:*

OPAL	OPAL IR	CLEAR IR	
U = .30	U = .28	U = .27	per NFRC
SHGC .34	SHGC .26	SHGC .30	per NFRC
VT = 26%	VT = 22%	VT = 35%	per NFRC

*With Polyurethane Thermal Breaks

Code Compliance:

Flame Spread	ASTM E-84 / UL 723	0 Flame / 120 Smoke
Smoke Developed		IBC Class: CC1 Rated
Combustibility Classification	ASTM D-635	CC1 – less than 1"/min
Self-Ignition Temperature	ASTM D-1929	986 deg F

STANDARD INFO

Thermal Break:

Available with or without polyurethane thermal break.

Finishing:

Bronze and Clear Anodized stocked. All other Wasco finishes also available, contact factory for information.

Glazing:

Clear IR, Opal and Opal IR stocked. Other glazing options available, contact factory for information.

Sizes:

Panel Width: 19.685"

Panel Length: Aprox 38' – Can be cut to custom lengths

System Height w/o Support: Up to 6' – Purlins required to support above 6'

System Length w/o Support: Up to 25' – Mullions required for longer lengths

*Depending on load requirements.

LEED COMPLIANCE

Post Industrial Recycled Content: 18%

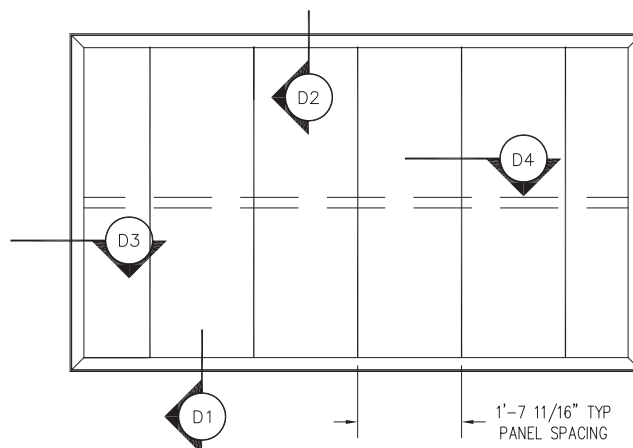
Pre Industrial Recycled Content: 18%

Manufacturing Location: Wells, Maine 04090

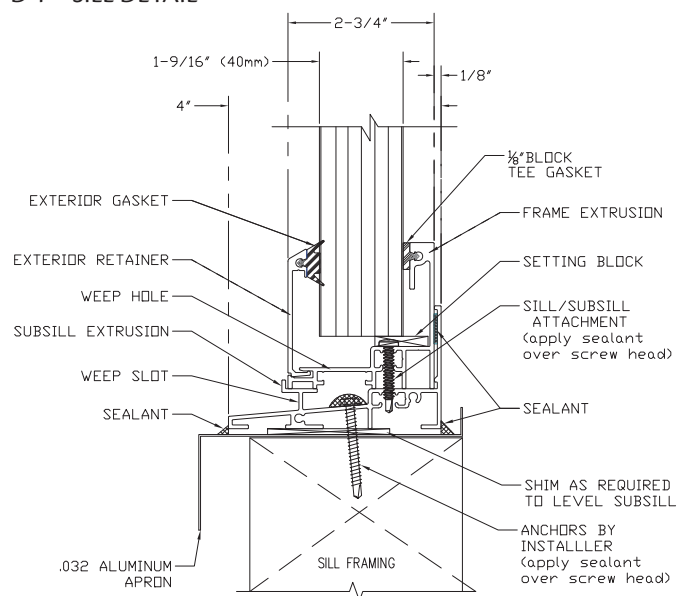
LumiWall Vertical Translucent Panel System – Technical Information Sheet



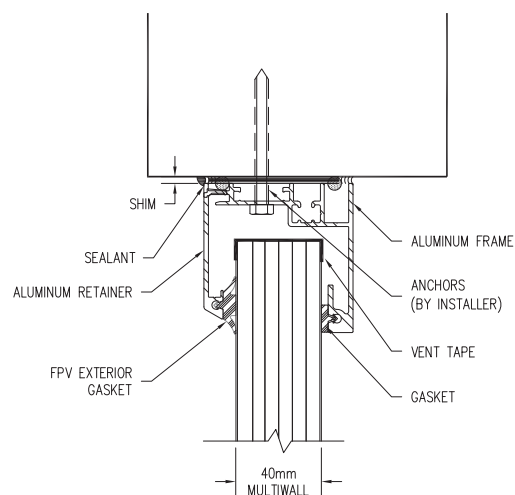
PLN 1 – FRONT ELEVATION



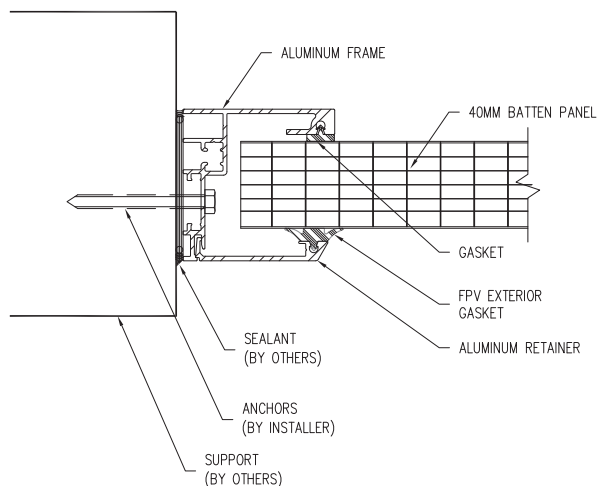
D 1 – SILL DETAIL



D2 – HEAD DETAIL



D3 – JAMB DETAIL



D4 – ANCHOR CLIP

