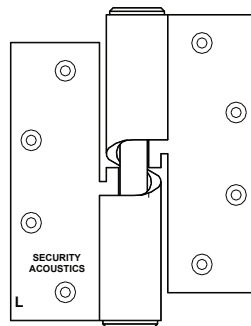


## PERIODIC MAINTENANCE FOR SECURITY ACOUSTICS DOOR AND FRAME ASSEMBLIES

Periodic maintenance of acoustic door assemblies is very important and the following are recommendations to assist the end user in this task:

### GRAVITY GLIDE HINGES

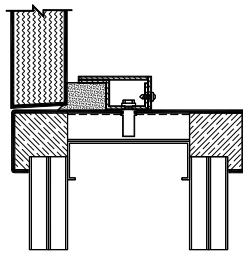
These hinges are factory lubricated prior to shipment and should be inspected every 12 months to ensure free motion and additional lubrication may be required at that time. This can be done by removing the cap from the top of the hinge barrel and squirting in several drops of high quality oil. Assemblies in extremely high use or exterior areas may require more frequent lubrication. Note that although these hinges are manufactured from 17-4 stainless steel they may rust in exterior or high humidity areas, therefore field painting is recommended.



### SOUND TIGHT PERIMETER SEALS

Perimeter seals are optimally adjusted by the installer but could require additional adjustment after extended periods of use. Proper adjustment can be checked by inserting a credit card between the neoprene and the door which should slide in tightly and not fall out. If additional adjustment is necessary, remove the sound seal cover, loosen the  $\frac{1}{2}$ -20 screws in the retainer assembly, slide the retainer assembly toward the door, retighten and replace the cover. The contact point between the door and neoprene can be lightly coated with a silicone lubricant to prevent the seal from adhering to a painted finish on the door

and caution should be exercised to prevent any paint from coming in direct contact with the neoprene. Hardware should never be installed directly to the perimeter seal assembly and heavy Z shaped standoff brackets are supplied for this purpose.

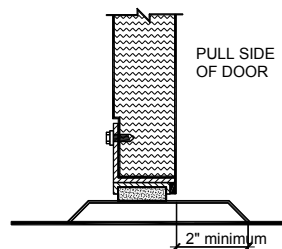


### **L-FRAME DOOR BOTTOM**

Maintenance on the door bottom is similar to what is required for the perimeter seals.

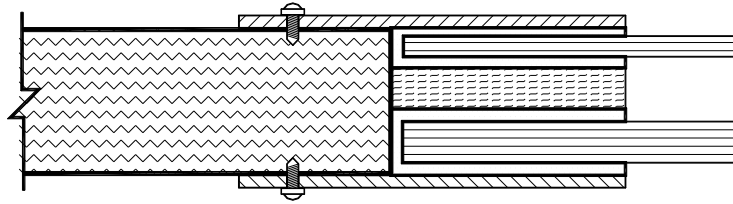
### **THRESHOLD**

Thresholds should be checked to ensure they are tight fitting to the slab, level and completely filled with concrete, plaster or mastic. These should never be installed atop carpeting or similar floor finishes, should extend at least 2" past the pull side of the door and should have a smooth top to prevent deterioration of the door bottom seal when it comes in contact with the threshold.



## GLASS AND GLAZING

Little if any maintenance is required for glazed assemblies since they are normally a sealed, double glazed unit. Should one or more of the glass panes get broken or damaged or if any condensation collects inside, please contact our Customer Service Department for recommendations for replacement or etc.



**Note: For periodic maintenance on conventional type hardware not supplied by Security Acoustics such as standard type hinges, locks, exit devices, closers, mortised door bottoms and similar please contact the specific product manufacturer.**

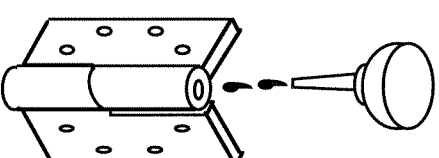
## RECOMMENDED PERIODIC MAINTENANCE SCHEDULE

Due to the specialized function of your Security Acoustics sound reduction door, periodic maintenance will be required to maintain the sound reduction properties. In order to ensure that your sound reduction door operates at peak efficiency, the following maintenance schedule should be observed:

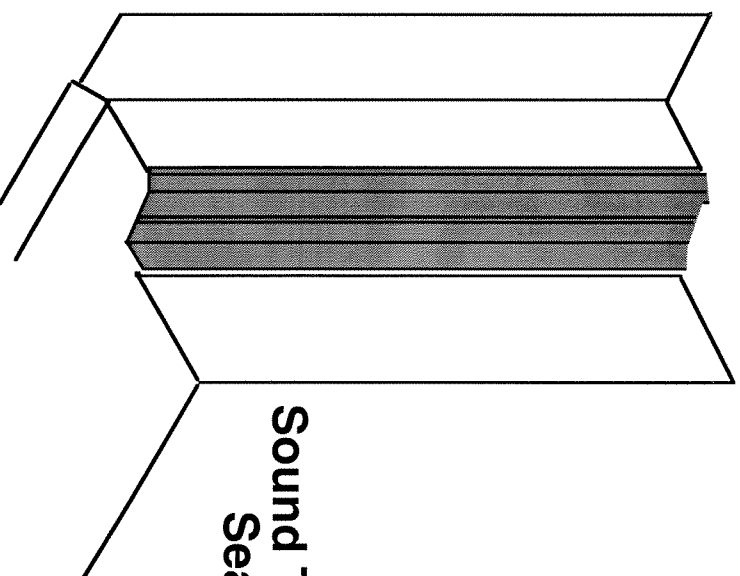
**Gravity Glide™ Hinges** - Inspect and lubricate as necessary every 12 months. Lubricate with a high quality oil, similar to "Break-Free", or a hinge grease. NOTE: In extreme conditions or exterior applications, more frequent inspection and lubrication may be necessary.

**Sound Tight™ Perimeter Seal** - Inspect seal to door junction every 12 months and adjust seals if required. Inspect for wear or damage as well.

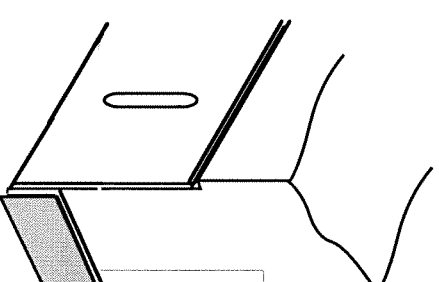
**L-Frame™ Door Bottom Seal** - Inspect the seal for wear or damage every 12 months and replace if necessary.



**Gravity Glide™  
Hinge**



**Sound Tight™  
Seal**



**L-Frame™  
Door Bottom  
Seal**