

## Installation Guidelines: Marmoleum® Wall Panels

### General Installation Guidelines

- Marmoleum® Wall Panel are available in two types of panels:
  - Standard Panels have a 1/4" MDF core, with approximate total thickness of 0.36" (9.2 mm).
  - Sustain Panels have a 1/4" NAUF (No Added Urea Formaldehyde) core, with approximate thickness of 0.36" (9.2 mm).
- Both types of panels meet CARB Phase 1 requirements and have a Greenguard certified backing. Non-harmful, low VOC adhesives are used to adhere the Marmoleum® and backer to the core.
- 38" x 96" panels are available for use where material will run horizontally.
- 48" x 78" panels are available for use where material will run vertically.
- Areas where Marmoleum® Wall Panels are to be installed should be clean, fully enclosed, and weathertight. The permanent HVAC must be fully operational, controlled and set at a minimum of 68° F (20° C) for a minimum of seven days prior to, during, and seven days after the installation. The material and adhesive should be conditioned in the same environment for at least 48 hours prior to the installation. Areas to receive the material shall be adequately lighted to allow for proper inspection of the substrate, installation and seaming of the material, and for final inspection.
- Store Marmoleum® Wall Panels stacked and laying flat.
- Marmoleum® Wall Panels can be successfully installed over a variety substrates provided the surface is sound, smooth, relatively flat, clean, and permanently dry. Drywall and wood panels are the most common substrates used in wainscot applications. Regardless of the substrate, it must be free of dust, dirt, grease, paint, old adhesive residue, oils, solvents or any other contaminant that could interfere with a secure bond. If there is an existing wall finish, it must be fully adhered or fastened. Any loose areas must be removed and repaired, re-adhered or mechanically fastened to ensure the integrity of the Marmoleum® Wall Panel system. Installation directly over existing vinyl wallcovering is not recommended. For recommendations regarding other substrates, contact Forbo Technical Services.

**Regardless of the specific type of substrate that is being installed over, the final determination of suitability for that purpose is the responsibility of the installer and/or installation contractor.**

- Always conduct adhesive mat bond tests before beginning the installation. Bond testing will aid in identifying both the working characteristics of the adhesive (open time and working time) for the site conditions, and also any potential bonding problems.
- Material should always be visually inspected prior to installation. If there are any questions regarding the quality of material, contact your local Forbo representative or Forbo Technical Services PRIOR to installation.  
**Any costs (including labor) associated with the replacement of material that was installed with visual defects that could have been seen prior to installation are not covered under warranty.**
- Ensure that all recommendations for substrate and jobsite conditions are met prior to beginning the installation. Beginning the installation is an implied acceptance of site conditions by the parties involved and liability for any failure directly related to inadequate site conditions becomes the responsibility of the installer and/or flooring contractor.
- Use a good quality construction adhesive.
- Remove fresh adhesive residue immediately with a clean white damp cloth. Dried adhesive residue can be removed with a clean white cloth and mineral spirits.
- Install protective outside corner guards over all outside corners.
- Take pride in your work and be Professional at all times.
- For additional information, contact Forbo Technical Services.

## Installation Guidelines: Marmoleum® Wall Panels

### Panel Layout

1. Establish a level line where the top of the Marmoleum® Wall Panels will fall.
2. Determine the location of the panel joints. It is recommended that the panels be centered along the length of the wall with the minimum number of vertical joints (i.e. the border pieces will be larger than 1/2 the panel width).

### Installation

If the panels are to be installed off the floor and not supported by a solid baseboard, the lower “J” Mold must be secured to the wall. Use screws at each vertical wall stud. It may be necessary to countersink the screw heads to avoid interference with the panels.

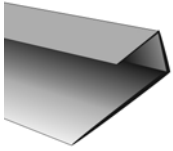
**Note:** If the wall is not flat, it may be necessary to use temporary bracing to hold the panel in contact with the adhesive while the adhesive is drying.

Though not required, it is suggested to begin the installation at an outside corner, if one exists, and work from left to right toward an inside corner. This will make it easier to install the inside corner pieces. If there are no outside corners, begin the installation with the first full width panel away from an inside corner to the left.

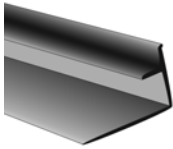
1. If necessary, cut the first panel to be installed to size and make any cutouts for electrical outlets, etc.  
Note: Always use a sharp saw and cut with the saw teeth cutting into the face of the Marmoleum® Wall Panel to minimize chipping along the cut edge.
2. Dry fit the panel and draw a pencil line on the substrate at the side(s) of the panel.
3. Adhesive application:
  - a. Use a good quality construction adhesive for adhering Marmoleum® Wall Panels.
  - b. Apply a 1/4" - 3/8" bead of adhesive to the wall 1" - 2" away from the edge around the perimeter of the area where the panel is to be installed, and vertically 18" - 20" on center in the middle of the area.
4. Place the panel into position and rub or roll firmly to ensure the panel is pressed completely into the adhesive.
5. Immediately pull the panel away from the wall and then back again. This will allow the adhesive to “flash off” and also enable the identification of any area that the panel was not in full contact with the adhesive. Remove fresh adhesive residue immediately with a clean white damp cloth. Dried adhesive residue can be removed with a clean white cloth and mineral spirits.
6. Use 6d finish nails to temporarily hold the panel in position while the adhesive is drying. The nails should be placed in areas that will be covered later by molding whenever possible.  
Note: If the hole will not be covered, a matching filler can be made by sanding or scraping the surface of a scrap piece of panel to produce a powder of the Marmoleum® material. This powder can then be mixed with a white glue to create a color-matched paste that can be used to fill any exposed nail holes. Refer to the Repairs section of Forbo’s Installation Guide for additional information.
7. Continue this process for each panel along the wall, placing the connector “T” molding between each panel as the work progresses.
8. Starting with the first panel on the adjacent wall, adhere the inside corner molding to the panel before adhering the panel to the wall.
9. Continue this process around the room until the installation is complete.

## Installation Guidelines: Marmoleum® Wall Panels

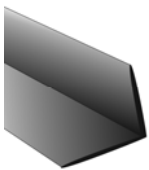
### Available Moldings



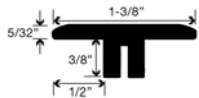
J Mold: Used for finishing any exposed edge.



Inside Corner Molding: Used for finishing edges at inside corners.



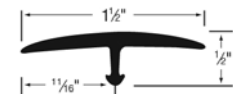
Outside Corner Molding: Used for protecting and finishing edges at outside corners.



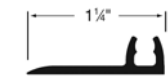
Color Coordinated "T" Mold: Used for concealing the gap between panels.  
Available in 24 colors.



Mono-Track for Color Coordinated "T" Mold: Used for attaching the Color Coordinated "T" Mold.



Snap Down Divider Molding: Used for concealing the gap between panels.  
Available in 15 colors.



Metal Track for Snap Down Divider Molding: Used for attaching the Snap Down Divider Molding

Forbo's Installation Guide contains additional information on substrate evaluation and preparation, and is available for download at [www.forboflooringna.com](http://www.forboflooringna.com). For a hard copy, or for additional information, contact Forbo Technical Services at +800 842 7839.