

Forbo Flooring Systems is the global market leader in linoleum. We also make Bulletin Board for wall applications and Furniture linoleum for unlimited design options.

We are committed to environmentally responsible productions and exceptional customer service.

From the indoor environment to the natural environment, Forbo's products and services combine design and functionality to create better environments.

**marmoleum<sup>®</sup>** with **topshield**

new top layer   primer   Marmoleum

Topshield is an innovative new finish that:

- eliminates the need for initial finish application
- reduces the use of chemicals
- enables lower cleaning costs
- provides a better long-term appearance retention than any other resilient flooring
- is OCCUPANCY-READY!

**marmoleum<sup>®</sup> dual** **topshield**

607 white marble	713 calico	707 barley	793 cotswold	795 butter	970 gold straw
779 sandstone	562 apricot	769 havana	767 rust	527 brick	412 cool green
621 dove grey	810 flax	624 steel grey	629 eiger	435 slate green	475 evergreen
975 lemon	512 cardinal	580 sangria	598 burgundy	345 red violet	784 coffee
465 nymph green	825 elf blue	846 royal blue	844 midnight blue	614 charcoal	630 onyx



Huntsville Hospital, Huntsville, AL  
photo: Michael Parker

The contrasting pigments of Dual, combined with a special production technique, create a deep structure, giving the floor an almost stone-like appearance. There is a choice between neutral and saturated colors.

The Dual range is available in both sheet and tile form in all 30 shades. The tiles are available in a 13" x 13" or 20" x 20" size.

Multi-color and solid welding rods are available for all colors of Dual.



Oneka Elementary, White Bear Lake School District photo: Charlie Vaughan

Never dated, always beautiful, practical and extremely versatile. These modern classics represent the very best of the marbling effects within the collection.

There are 24 natural tones in this Authentic range. Delivery of these colors is guaranteed until 2012 to facilitate the planning of longer-term projects.

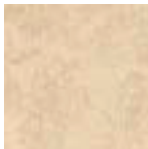
The Real Bold range provides a contrast that harmonizes with the classic tones in the Authentic range. These saturated colors can be used to provide an accent in a floor design, or stand alone to make a strong statement.

Multi-color and solid welding rods are available for all colors of Real authentic and bold.\*

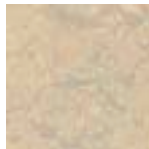


# marmoleum<sup>®</sup> real authentic

# real bold



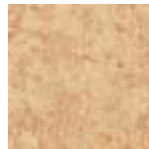
3038 caribbean



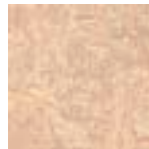
3120 rosato



3160 italian pink



3075 shell



3077 tan pink



3125 golden sunset



3133 water melon



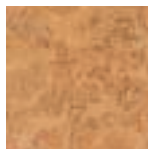
3134 azzurro



3173 van gogh



3163 opera



3174 sahara



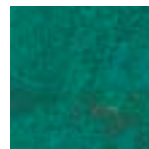
3164 indian summer



3136 concrete



3126 kyoto



3204 peacock green



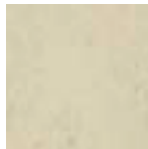
3205 lapis lazuli



3123 arabesque



3032 mist grey



3049 papyrus white



3183 eternal stone



3146 serene grey



3131 scarlet



3203 henna



3207 cobalt oxide



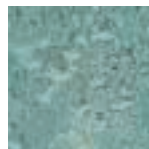
3055 fresco blue



3053 dove blue



3137 slate grey



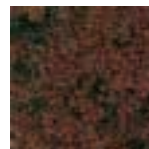
3182 lapponia



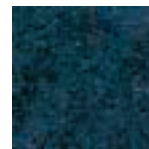
3201 eucalyptus



3127 bleeckerstreet



3202 wine barrel



3206 galaxy



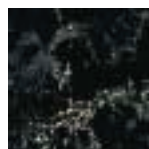
3030 blue



3048 graphite



3139 lava



2939 black



3141 \* himalaya



3142 \* umbra



3143 \* sepia

\* Note: 3141, 3142 & 3143 are not part of the Real Authentic collection. Welding rod is available in solid-color only.



Prisco Community Center, Aurora, IL photo: Barry Rustin

Fresco - with its subtle, refined marbling has an extremely harmonious surface. Its delicate light, soft hues and subtle color contrast evoke Renaissance frescos.

The 16 tone-on-tone shades of Fresco perfectly match the materials used in modern architecture.

Solid color welding rods are available for Fresco.



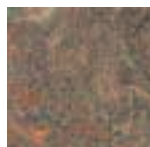











Please contact Forbo Flooring for information on our Sample Recycling Program at 1-800-842-7839.

# marmoleum<sup>®</sup> fresco

							
3858 barbados	3861 arabian pearl	3871 silver birch	3846 natural corn	3860 silver shadow	3828 blue heaven	3856 whispering blue	3824 twilight purple
							
3847 golden saffron	3825 african desert	3870 red copper	3874 walnut	3873 mint green	3827 verdi green	3866 eternity	3872 volcanic ash

# marmoleum<sup>®</sup> vivace

					
3414 aurora hour	3407 donkey island	3405 granada	3415 purple passion	3411 sunny day	3403 asian tiger
					
3408 kerala	3409 fairy blue	3406 aquarius	3413 green melody	3410 poppy fiesta	3412 rembrandt palette

This spectacular array of eight-color marble designs are unique to linoleum. The color spectrum of the designs are chosen in such a way that the surface blends into a quiet symphonic ensemble. Vivace's 12 colorful patterns perfectly match a wide variety of surroundings and materials.

Multi-color and solid welding rods are available for all colors of Vivace.

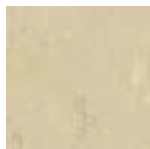













This subtle Marmoleum design satisfies the demand for a linoleum with a non-marbled structure. When installed, it looks almost solid-colored. Its natural look combines well with natural materials and design elements. The twelve colors form a subdued palette to provide harmony in any combination.

Solid color welding rods are available for Piano.

# marmoleum<sup>®</sup> piano



					
3602 white ashes	3601 warm grey	3606 golden glow	3610 faded brown	3609 blue mood	3605 green murmur
					
3603 silent blue	3604 hidden pink	3607 grey dusk	3608 bleached caramel	3612 red shadow	3611 blue stone

## marmoleum<sup>®</sup> surface solutions

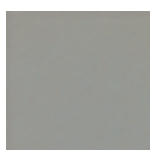









Marmoleum is ideal for all types of furniture applications, including office, restaurant, and retail.

Performance benefits of Marmoleum Surface Solutions include a no-glare matte finish, natural anti-static properties, ease of cleaning and maintenance, availability in large sheets for seamless applications, and cost effective installation.

Choose from any color of Marmoleum Real, Dual, Fresco, Vivace, Piano, Mineral, Prisma, or Graphic.

# marmoleum<sup>®</sup> walton



				
171	180	123	173	c168 red crocodile
				
181	183	168	182	c123 black crocodile



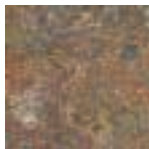


Forbo cooperated closely with 12 Dutch designers to create the Marmoleum Dutch Design collection. The 12 designers were granted complete artistic freedom. Their inspiration was very personal: a favorite color, a shade with a great future or a color missing from the current ranges. The result is 12 unique colorings, 12 designs each telling their own story.

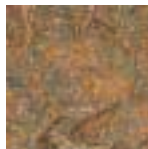
# marmoleum® dutch design



M0112  
sunflower gold



M0212  
landscape of  
colours



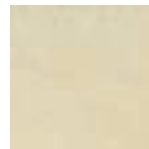
M0312  
tree



M0412  
twin materials



M0512  
2%



M0612  
luminous flooring



M0712  
grey matter



M0812  
51° 22' 75" north  
5° 44' 25" east



M0912  
naked



M1012  
all the colours of  
the rainbow



M1112  
painted fields



M1212  
red

# marmoleum®

## borders & corners

Marmoleum Borders and Corners are exceptionally precise, water-jet cut, made-to-order design elements that can be used to add unique, custom features to your floor design. Choose your individual color palette in any of the standard configurations. Once a request form is filled out and the product is ordered, standard delivery is within 4-6 weeks. Minimum order is 1 linear meter of border or 1 corner.

border size: 4 3/8" x 39 3/8"  
corner size: 4 3/8" x 4 3/8"



Sovereign

Geometric

New Tradition

Nuance

Shadow

Panache



Marmoleum prisma is inspired by the light separating properties of the prism. Available in eighteen vibrant colors, Marmoleum prisma consists of two families of patterns.

# marmoleum<sup>®</sup> prisma



3621  
sienna scenery



3625  
salsa red



3622  
mellow yellow



5017  
orange cocktail



5057  
fruit fantastic



3626  
cricket field



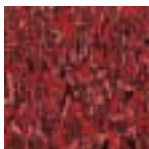
3624  
bahamian sea



5046  
pool party



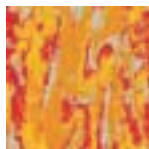
5016  
autumn glaze



5056  
el torro



5026  
summertime



5027  
festival yellow



5067  
spring dance



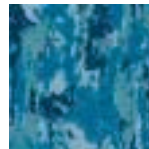
5066  
herb garden



5047  
fresh fountain



3628  
ocean regatta



5086  
iris blue

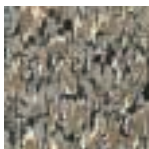


5087  
winter alps

# marmoleum<sup>®</sup> graphic



5313  
aquatint



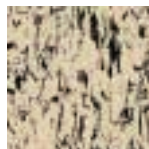
5312  
libretto



5314  
scenario

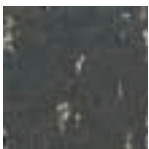


5305  
scrabble

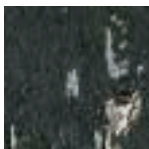


5302  
print

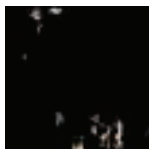
Marmoleum graphic is a classic range concentrating on blacks, whites and grays, conceived in the artistic traditions of Rembrandt etchings and Escher lithographs. Marmoleum graphic is available in ten colors.



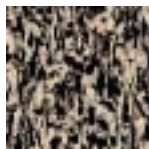
5311  
signo



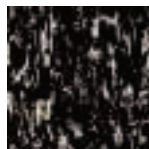
5315  
dry point



5306  
domino



5303  
litho



5301  
sgraffito





Marmoleum mineral draws its inspiration from the variety and richness of natural stone types in a spectacularly wide spectrum of shades and hues. Marmoleum mineral is available in sixteen sophisticated shades.

# marmoleum<sup>®</sup> mineral



5702  
moonstone



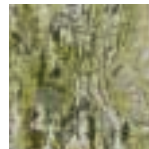
5704  
citrine



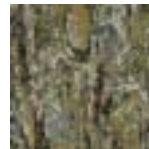
5706  
calcite



5708  
carnelian



5701  
serpentine



5703  
moss agate



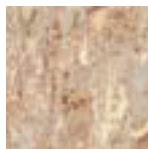
5705  
sodalite



5707  
sapphire



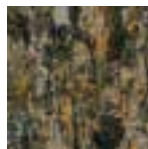
5709  
crystal



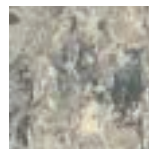
5711  
smoky quartz



5713  
tiger eye



5715  
obsidian



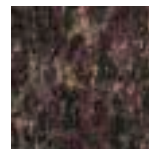
5710  
diamond



5712  
galenite



5714  
hematite



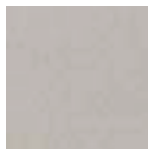
5716  
amethyst

## Bulletin Board<sup>®</sup>

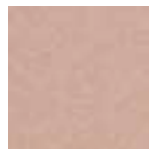
Bulletin Board is the choice for schools, offices, and other environments where functional, washable, tackable surfaces are needed. It is also applicable as a decorative finish to furniture, doors, or even moveable partitions. Bulletin Board is extremely durable, has a low level of light reflectance, and will not warp or crumble. It is available in an attractive palette of 12 solid through colors.



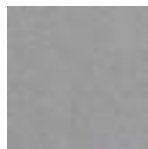
2067



2182



2187



2162



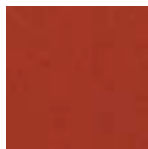
2185



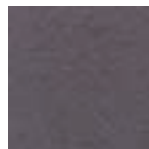
2166



2203



2201



2204



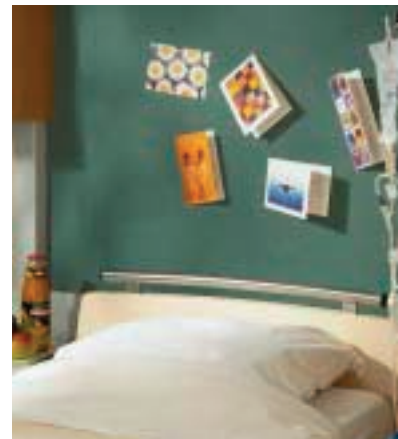
2186



2202



2205



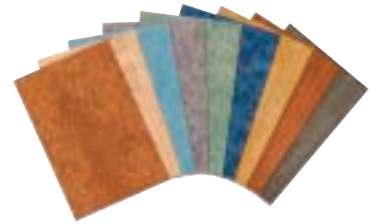


# Comfort Program

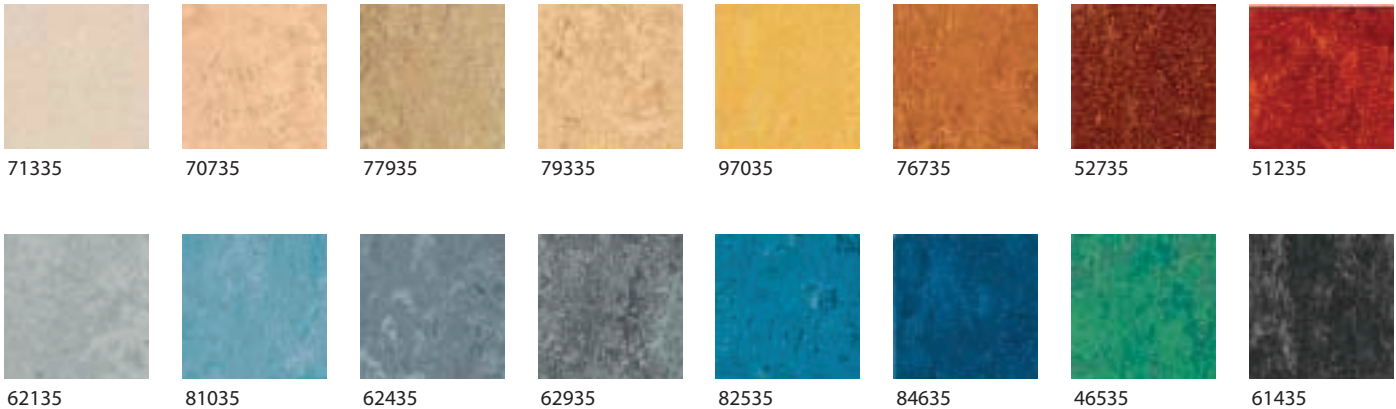
The Comfort Program, consisting of Marmoleum Decibel, Eternal Wood Decibel and Quartz Decibel, is a collection of linoleum and vinyl floorcoverings that incorporate an acoustic layer to provide sound insulation and comfort under foot. Ideal applications include nurses stations, classrooms, auditoriums, libraries, and high-rise apartments.

Marmoleum Decibel is a natural, bacteriostatic linoleum floorcovering that provides sound insulation and comfort. Marmoleum Decibel features Topshield.

Visit us online at [www.forboflooringNA.com](http://www.forboflooringNA.com) to view the entire Comfort Program collection.



**marmoleum**® decibel 



## Marmoleum Sheet and Tile Quick Specs

PRODUCT	ASTM E-648 NFPA 253 CRITICAL RADIANT FLUX	ASTM F-970 STATIC LOAD	FEDERAL SPEC ASTM F 2034 (Sheet) ASTM F 1700 (Tile)	RESISTANCE TO BACTERIA	IMPACT SOUND INSULATION (ASTM 492) IMPACT SOUND REDUCTION	WIDTH ROLL/TILE SIZE GAUGE
<b>MARMOLEUM®</b> Real, Dual, Fresco, Vivace, Piano, Mineral, Prisma, and Graphic	Class 1	450 p.s.i.	Meets or exceeds	Bactericidal	Meets or exceeds 6 dB	79" (2 m), 77 y' (64 m <sup>2</sup> ) 105 lin ft (32 m), 1/10" (2.5 mm)
<b>MARMOLEUM®</b> Decibel	Class 1	850 p.s.i.	Meets or exceeds	Bactericidal	Meets or exceeds 17 dB	79" (2 m), 65 y' (55 m <sup>2</sup> ) 89 lin ft (27 m), 0.137" (3.5 mm)
<b>MARMOLEUM®</b> Dual Tile	Class 1	1500 p.s.i.	Meets or exceeds	Bactericidal	Meets or exceeds 6 dB	13" x 13" (33 cm x 33 cm) 20" x 20" (50 cm x 50 cm) 1/10" (2.5 mm), 53.82 ft <sup>2</sup> / ctn (5 m <sup>2</sup> )
<b>MARMOLEUM®</b> Dutch Design	Class 1	450 p.s.i.	Meets or exceeds	Bactericidal	Meets or exceeds 6 dB	79" (2 m), 77 y' (64 m <sup>2</sup> ) 105 lin ft (32 m), 1/10" (2.5 mm)
<b>MARMOLEUM®</b> Borders & Corners	Class 1	450 p.s.i.	Meets or exceeds	Bactericidal	Meets or exceeds 6 dB	border size: 4 3/8" x 39 3/8" corner size: 4 3/8" x 4 3/8" 1/10" (2.5 mm)
<b>Walton</b>	Class 1	450 p.s.i.	Meets or exceeds	Bactericidal	Meets or exceeds 6 dB	79" (2 m), 77 y' (64 m <sup>2</sup> ) 105 lin ft (32 m), 1/10" (2.5 mm)

see us at  
**Sweets.com**