



**flotex**<sup>®</sup>  
flocked flooring

**flotex**<sup>®</sup>

creating better environments

**Forbo**

FLOORING SYSTEMS



## flotex® : the unique resilient floor covering

A floor covering that looks and feels like a carpet without any of the drawbacks of a carpet. Flotex fiber floor covering has a smooth, velour like surface that is comfortable to walk on, warm underfoot with excellent slip resistant and acoustic properties.

Flotex is extremely durable and can be cleaned easily by vacuuming or full steam cleaning as the flocked fibers are firmly anchored in a waterproof PVC backing, making it possible to clean right down to the base of the pile.



\*Sanitized® is a registered trademark of SANITIZED AG License No 2893.04

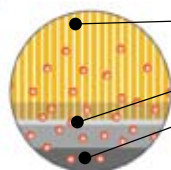
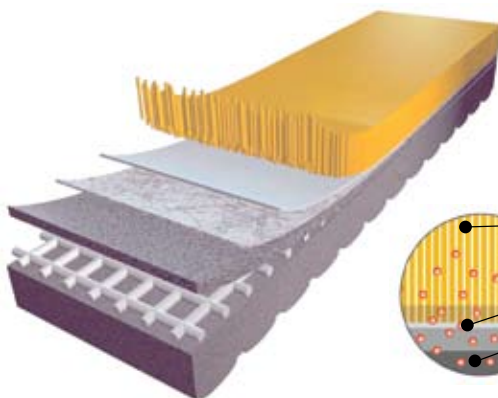
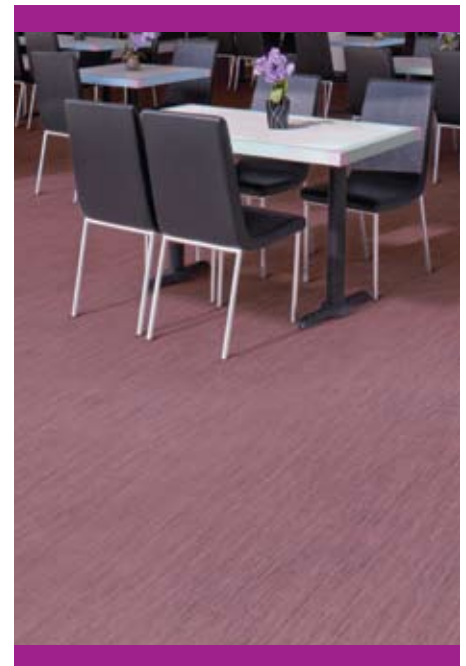
## hygienic, environment, and atmosphere: all in one

Hygiene issues and clean air are more important than ever. Often when hygiene is key, atmosphere and design of the environment take second stand. Flotex brings both together. The warm comfortable floor covering comes in a wide range of colors and designs that match any professional requirement, while meeting the highest hygienic standard.

Thanks to the highly effective anti-microbial treatment "Sanitized", Flotex offers constant protection against bacteria, including MRSA, E-coli. The ease of cleaning and maintenance, and economic use of water diminish the impact on the environment.

### Uniquely Flotex:

The loops and twists of carpets and the fibers of the yarn trap dirt. The smooth straight upright nylon 6.6 flotex fibers allows dirt to be removed easily by vacuum cleaning



- Nylon 6.6 flocked pile
- Adhesive layer containing Sanitized® anti-microbial agent
- Migration of Sanitized® anti-microbial agent into pile and backing



## Flotex is completely waterproof

Flotex combines the practicality of resilient flooring with the slip protection and acoustic dampening usually associated with textiles. Being completely waterproof, Flotex is also the only truly washable textile floor covering. Water remains within the dense pile on Flotex allowing thorough wet cleaning and rapid drying. It can also be cleaned at 100°C for rapid steam disinfection.

### Easy vacuuming

Flotex is also approved by the British Allergy Foundation by reducing the amount of allergens in the atmosphere, allowing for their easy removal by vacuuming, Flotex is proven to have a positive impact on the lives of allergy sufferers. The loops and twists of carpet trap dirt. Consisting of smooth, straight up right nylon 6.6 fibers, Flotex allows dirt to be removed easily by ordinary vacuuming.

### Flotex is allergy approved

Flotex has the ability to trap allergens and then safely release them to standard cleaning appliances. When cleaned Flotex releases twice as many allergens compared to the cleaning of conventional carpets. More harmful allergens are thus removed, creating a more comfortable environment for asthma and allergy sufferers.

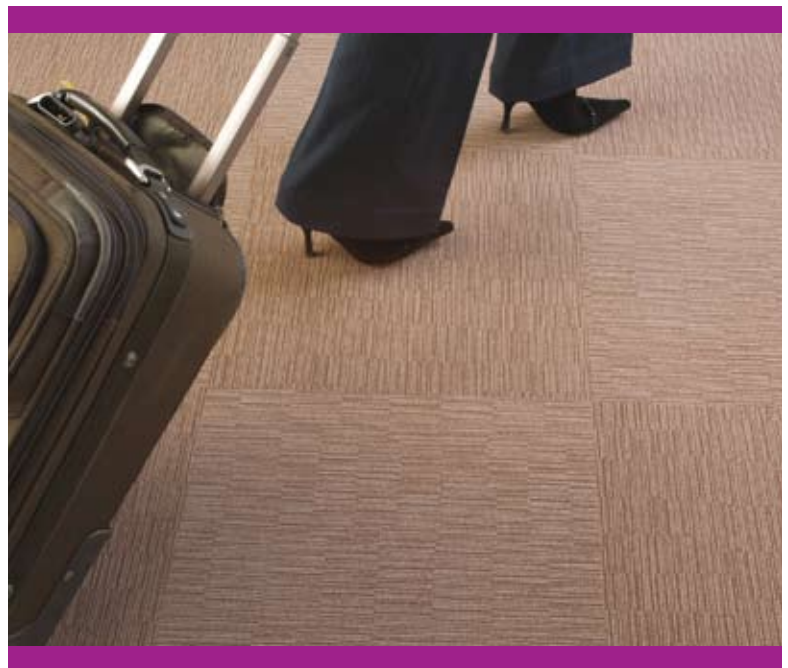
## Environmental responsibility - recycled tile backing



As a responsible manufacturer we share your ambitions for a sustainable world. We fully comply, as a minimum, with current environmental legislation and are committed to overcoming the environmental challenges facing our industry.

We constantly strive to find effective ways to minimize our consumption of resources while producing high performing products with a long life cycle. We have almost completely eliminated our use of landfill by installing the first recycling plant of its kind to convert pre-consumer waste from many of our production sites into a high performance Flotex carpet tile backing. Today this facility processes nearly 50 tonnes of waste a week.

Besides the environmental advantages, this tile backing also delivers a highly durable product which will last for many years.



### Flotex floor designs, a world of difference

Flotex designs are printed on the smooth even fiber surface, creating a wide variety in colorways and designs that enhance the playful or professional environment of offices, schools, or health care institutions.



Silica 333044 | gull

## flotex<sup>®</sup> silica

Create sophisticated interior moods with Flotex silica, a linear design in a distinctive collection of muted earth and mineral tones. It brings tranquility to the modern office environment, conference centre or atrium.



333044 | gull



333116 | azure



333088 | anthracite



333037 | grey



333108 | pepper



333063 | taupe



333101 | straw



Checkerboard installation



Superior appearance rating



Good appearance rating



Moderate appearance rating

Flotex tile size 50cm x 50cm (20" x 20" approx.)

Please note: Digital representation may vary from the actual product. Please order a sample to see the full effect.



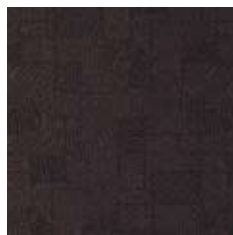
Samoa 379074 | beige

## flotex® samoa

Flotex samoa is a vivid graphic design in a range of striking contemporary colours. This design is fun yet practical and works well in education and hospitality environments. The design can be installed in either checkerboard or broadloom style.



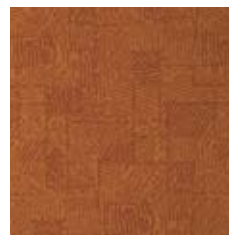
379074 | beige ●



379114 | chocolate ●



379073 | brick ◐



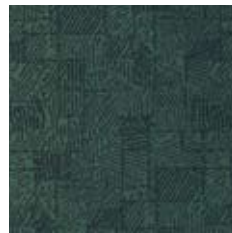
379200 | tangerine



379186 | blue ◐



379229 | azure ◐



379190 | reseda ◐



379205 | red



379176 | grey ◐



379191 | anthracite ◐



Broadloom or  
Checkerboard installation



Superior appearance rating



Good appearance rating



Moderate appearance rating

Flotex tile size 50cm x 50cm (20" x 20" approx.)

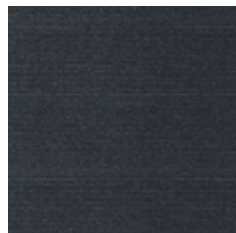
Please note: Digital representation may vary from the actual product. Please order a sample to see the full effect.



Integrity 500004 | grey

## flotex® integrity

Flotex integrity is the perfect fit for the office and business environment. It is suitable for both large and moderately sized spaces that require a tranquil modern atmosphere. The basic colors of Flotex integrity and the subtle pinstripe design offer a distinctive floor for the professional setting.



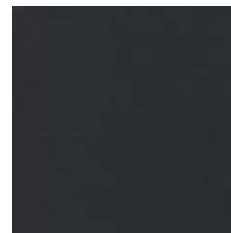
500004 | grey



500010 | granite



500005 | blue



500007 | navy



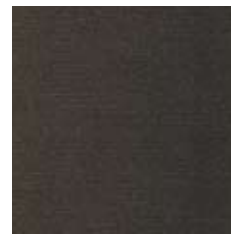
500001 | leaf



500008 | taupe



500002 | forest



500011 | charcoal



Checkerboard installation



Superior appearance rating



Good appearance rating



Moderate appearance rating

Flotex tile size 50cm x 50cm (20" x 20" approx.)

Please note: Digital representation may vary from the actual product. Please order a sample to see the full effect.



Montana 377015 | blue

## flotex® montana

Created to express individuality, the wide color range of Flotex montana, combined with the subdued semi-plain all-over design, turns environments into agreeable working and learning spaces across a broad range of interiors.



Checkerboard installation



Superior appearance rating



Good appearance rating




Moderate appearance rating




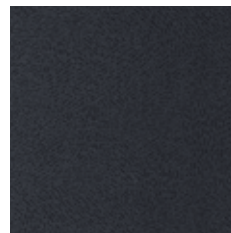
377015 | blue 




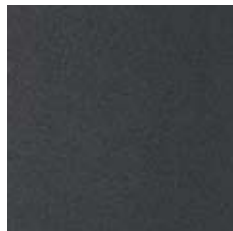
377012 | ocean 




377016 | indigo 




377050 | anthracite 




377031 | ash 




377046 | grey 



377044 | nimbus 




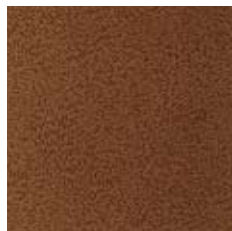
377108 | pepper 


Flotex tile size 50cm x 50cm  
(20" x 20" approx.)

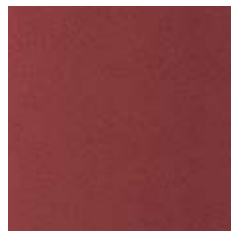
Montana is also available in  
sheet, 2.m width




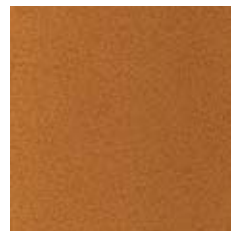
377037 | reseda 




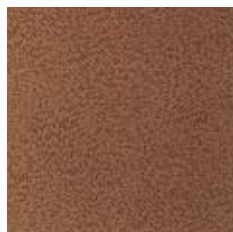
377073 | brick 




377008 | red 




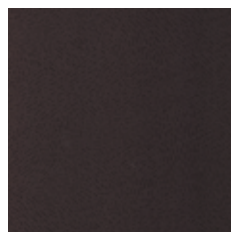
377003 | tangerine 




377072 | melon 



377074 | beige 



377114 | chocolate 

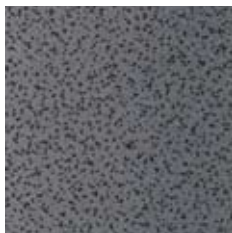
Please note: Digital representation may vary from the actual product. Please order a sample to see the full effect.




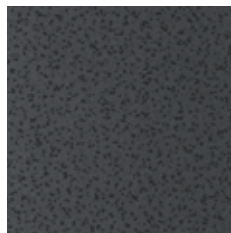
Samba 520073 | brick


## flotex® samba

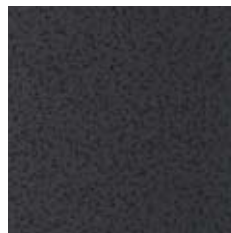
Samba offers a wide colour choice combined with a semi-plain, random pattern that adds interest to its environment. The pattern can easily be combined with other colors or complementary Flotex ranges and is available in both sheet and tile format




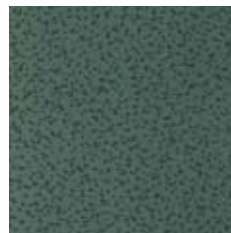
520116 | grey 




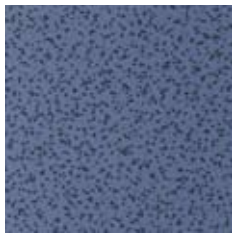
520031 | ash 



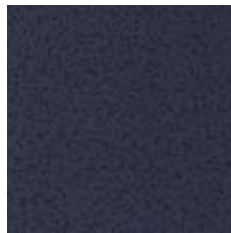
520050 | anthracite 




520035 | reseda 




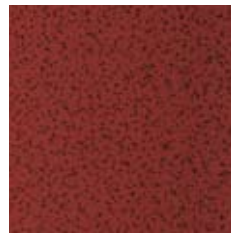
520141 | blue 




520140 | indigo 



520073 | brick 



520049 | red 

Samba is also available in sheet, 2m width



Checkerboard installation



Superior appearance rating



Good appearance rating



Moderate appearance rating

Flotex tile size 50cm x 50cm (20" x 20" approx.)

Please note: Digital representation may vary from the actual product. Please order a sample to see the full effect.





Senya 369050 | anthracite

## flotex<sup>®</sup> senya

Whether in hospitality, business, retail or education, the Flotex senya tile range delivers character and practicality. The tranquil, geometric design adapts easily to its environment, creating a quiet overall floor design.



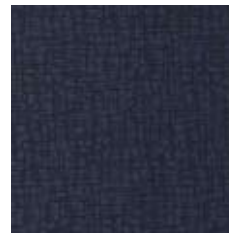
369050 | anthracite ●



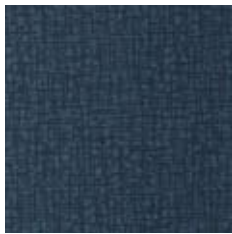
369046 | grey ●



369015 | blue ●



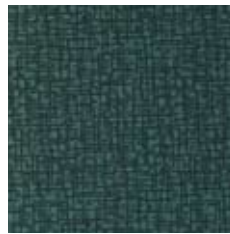
369016 | indigo ●



369042 | ocean ●



369049 | red ●



369037 | reseda ●

Senya is also available in sheet, 2m width



Checkerboard installation



Superior appearance rating



Good appearance rating



Moderate appearance rating

Flotex tile size 50cm x 50cm (20" x 20" approx.)

Please note: Digital representation may vary from the actual product. Please order a sample to see the full effect.



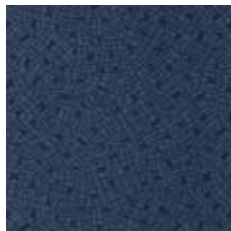
Palma 380186 | blue

## flotex® palma

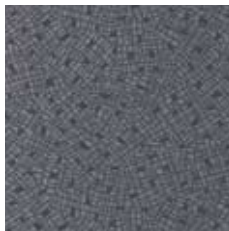
Flotex palma is an abstract random pattern in a variety of basic colours. It offers a distinctive look and is well suited for hospitality and retail environments.



380186 | blue



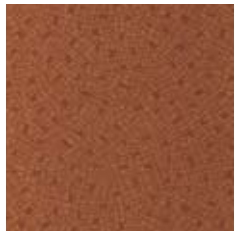
380193 | ocean



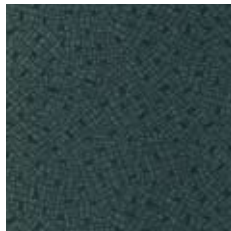
380037 | grey



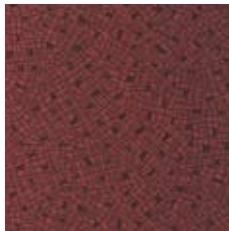
380074 | beige



380200 | tangerine



380190 | reseda



380049 | red



Checkerboard installation



Superior appearance rating



Good appearance rating



Moderate appearance rating

Flotex tile size 50cm x 50cm (20" x 20" approx.)

Please note: Digital representation may vary from the actual product. Please order a sample to see the full effect.



Penang 382114 | chocolate


## flotex<sup>®</sup> penang

Flotex penang offers a stunning look for any modern environment. It creates a subtle linear effect and comes in a range of rich modern shades.




382075 | flax 




382114 | chocolate 




382108 | pepper 




382037 | grey 




382031 | ash 




382044 | gull 



382116 | azure 



382073 | brick 



Checkerboard installation



Superior appearance rating



Good appearance rating



Moderate appearance rating

Flotex tile size 50cm x 50cm (20" x 20" approx.)

Please note: Digital representation may vary from the actual product. Please order a sample to see the full effect.



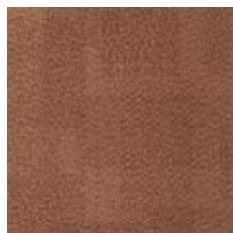
Oslo 373075 | flax

## flotex<sup>®</sup> oslo

Flotex oslo is a modern geometric design that can be installed in both a checkerboard and broadloom fashion. It is available in eight stylish colorways suitable for a wide range of professional environments.



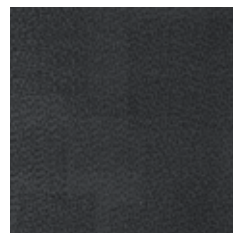
373075 | flax ●



373072 | melon ◯



373035 | reseda ◯



373031 | ash ◯



373037 | grey ◯



373015 | blue ◯



373042 | ocean ◯



373116 | azure ◯



Broadloom or checkerboard installation



Superior appearance rating



Good appearance rating



Moderate appearance rating

Flotex tile size 50cm x 50cm (20" x 20" approx.)

Please note: Digital representation may vary from the actual product. Please order a sample to see the full effect.




Seoul 375063 | taupe


## flotex<sup>®</sup> seoul

Flotex seoul is a heavily textured geometric design and is tailor-made for today's busy modern office environments.




375063 | taupe 




375108 | pepper 




375073 | brick 




375088 | anthracite 




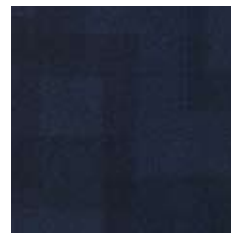
375037 | grey 




375044 | gull 



375042 | ocean 



375052 | indigo 



Broadloom or checkerboard installation



Superior appearance rating



Good appearance rating



Moderate appearance rating

Flotex tile size 50cm x 50cm (20" x 20" approx.)

Please note: Digital representation may vary from the actual product. Please order a sample to see the full effect.

## Technical specifications

This textile floor covering meets the requirements of EN 1307

|  |                             | Flotex tile                   |                                       |
|--|-----------------------------|-------------------------------|---------------------------------------|
|  | Total thickness             | ISO 1765                      | .21" (5.3 mm)                         |
|  | Commercial heavy            | EN 685                        | Class 33                              |
|  | Tile size                   | 20" x 20" approx. (50 x 50cm) |                                       |
|  | Quantity of tiles per box   | 12 tiles (3m <sup>2</sup> )   |                                       |
|  | Total weight                | ISO 8543                      | 4.5 kg/m <sup>2</sup>                 |
|  | Dimensional stability       | EN 986                        | <0.2 %                                |
|  | Abrasion resistance         | EN 1963                       | < 35 g Pile loss                      |
|  | Castor chair continuous use | EN 985                        | r = ≥ 2.4 Continuous use              |
|  | Light fastness              | EN ISO 105 B02                | 6                                     |
|  |                             | DIN 51097                     | > 0.7 Dry and wet                     |
|  | Slip resistance             | UK SGR pendulum               | Dry – very low slip<br>Wet – low slip |
|  |                             | Electrical resistance         | ISO 10965                             |
|  | Acoustic                    | ISO 140-8                     | Impact sound ΔLw = 17 dB              |
|  | Acoustic                    | ISO 354                       | Sound absorption = 0.10               |
| Flotex Tile meets the requirements of EN 14041 |                             |                               |                                       |
|  | Reaction to fire            | EN 13501-1                    | Bfl, s1                               |
|  | Slip resistance             | EN 13893                      | DS: > 0.30                            |
|  | Body voltage                | ISO 6356                      | < 2kV                                 |
|  | Thermal resistance          | ISO 8302                      | 0.0456 m <sup>2</sup> K/W             |

### Recommended adhesive

Our recommended adhesive for the Flotex tile collection is Forbo FRT 950contact adhesive.

Please contact customer service for more information.

# Forbo FloorCare method

## Flotex tiles

A regular cleaning program will minimize the need for major restorative maintenance.  
Avoid excessive use of cleaning products. If used, rinse them out thoroughly as residues may attract dirt.

### Cleaning after installation



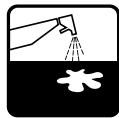
- Vacuum clean the floor using an upright vacuum cleaner with a powered brush
- Remove stains or spills locally using clean warm water
- Always work from outside inwards
- Remove excess water
- Allow the floor to dry

### Regular cleaning



- Vacuum clean the floor using an upright vacuum cleaner with a powered brush
- Remove stains or spills locally using clean warm water
- Always work from outside inwards
- Remove excess water
- Allow the floor to dry

### Occasional maintenance



- First soak stains locally by spraying with a solution of mild detergent
- Scrub with plenty of warm water, using a machine for carpet wet cleaning with brush action
- Allow the floor to dry

Forbo Flooring Systems is part of the Forbo Group, a global leader in flooring, bonding and movement systems, and offers a full range of flooring products for both commercial and residential markets. High quality linoleum, vinyl, textile, flocced and entrance flooring products combine functionality, colour and design, offering you total flooring solutions for any environment.



#### Canada

Forbo Flooring Systems  
3220 Orlando Drive  
Mississauga, ON L4V 1R5  
Tel: 416-661-2351/866-661-2351  
Fax: 416-661-5362  
E-mail: [info.NA@forbo.com](mailto:info.NA@forbo.com)  
[www.forboflooringNA.com](http://www.forboflooringNA.com)

#### USA

Forbo Flooring Systems  
8 Maplewood Drive  
Humboldt Industrial Park  
Hazleton, PA 18202  
Tel: 570-459-0771/800-842-7839  
Fax: 570-450-0258  
E-mail: [info.NA@forbo.com](mailto:info.NA@forbo.com)  
[www.forboflooringNA.com](http://www.forboflooringNA.com)