

flotex[®]
flocked flooring

flotex[®] sheet

Forbo
FLOORING SYSTEMS

creating better environments



it's not a carpet,
but it *feels* like one.

it's not a resilient,
but it *cleans* like one.

discover **flotex**[®]

Forbo **Flotex** features stronger benefits over the average textile floor, combining the durable characteristics of a resilient floor with the warmth and comfort of carpet.

hygienic

- anti-microbial Sanitized[®] treatment of the **Flotex** base ensures continuous protection against bacteria such as MRSA and E. Coli, molds, and fungus
- allergenic - independent tests show that a dust mite population introduced to **Flotex** is reduced by an average of 86% over an eight week period
- daily vacuuming cleans away twice as many allergens compared to conventional carpets due to **Flotex's** unique fiber construction that releases dirt in a single cleaning

durable

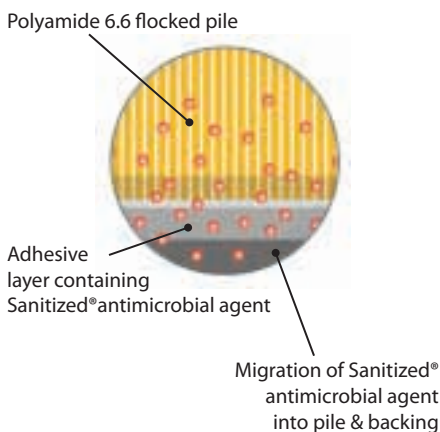
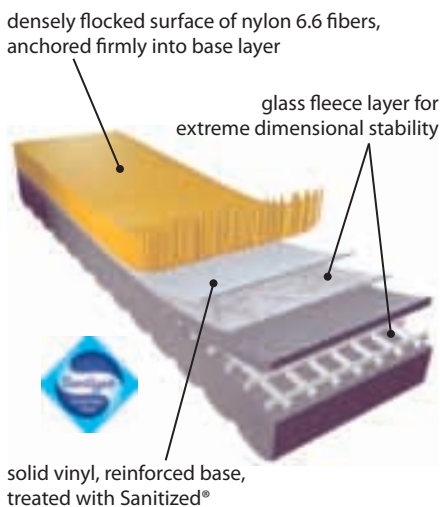
- 100% waterproof, the only truly washable textile floor covering
- resists crushing and matting, will not curl, shrink or stretch
- provides ergonomic relief to staff and patients
- positive crush and recovery
- stain resistant
- "no fray" construction

high-performance

- slip-resistant wet or dry
- smooth, velour-like surface that is comfortable to walk on
- excellent acoustic properties of 20 dB
- outperforms any textile floor covering in appearance when recommended cleaning procedures are followed
- ideal for any application where a hard-wearing, hygienic floor is required, including senior living and long-term care, dining areas, retail, offices, airports, public spaces, education, and locker rooms
- range of design of patterns and colorways in 6' 6" wide sheet and 20" x 20" tile
- able to water-jet cut to create custom logos and designs
- over 100 years of experience

easy care

- smooth upright nylon 6.6 fibers allow dirt to be easily removed by ordinary vacuuming, no dry dirt is trapped by loops or brush edges
- cleans easily with water and minimal neutral cleaner, dries thoroughly
- no harsh chemicals or special machines required





flotex[®] naturals

Flotex Naturals is inspired by the world around us with a primary focus on the natural textures of wood and cork. The sixteen photo-realistic designs offer a mix of classic and contemporary styles and will add warmth and comfort to assisted living, long-term living and health care facilities.

approximate pattern repeat

A: length: 39.37" (100 cm)
width: 59.06" (150 cm)
B: length: 78.74" (200 cm)
width: 59.06" (150 cm)
C: length: 78.74" (200 cm)
width: 58.07" (147.5 cm)
D: length: 78.74" (200 cm)
width: 50.79" (129 cm)
E: length: 39.37" (100 cm)
width: 40.55" (103 cm)

roll size:

length: 98.4' (30 lm)
width: 6'6" (200 cm)
20 dB



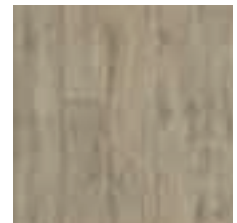
010038 (A)
white oak



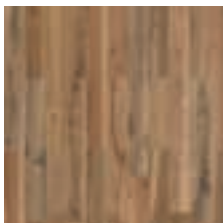
010041 (A)
smoked beech



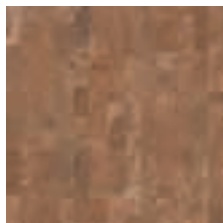
010042 (A)
steamed beech



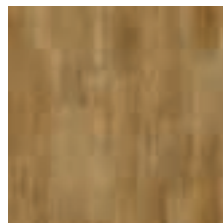
010039 (A)
european white wood



010003 (C)
mixed wood antique



010017 (D)
cork amber



010036 (A)
american oak



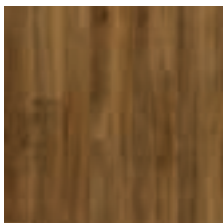
010035 (A)
distressed oak



010040 (A)
antique pine



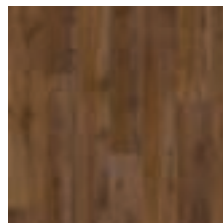
010053 (B)
golden oak



010057 (A)
cedar



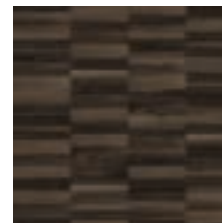
010004 (D)
cork sienna



010055 (B)
chestnut



010056 (A)
stained pine



010054 (E)
walnut parquet



010037 (A)
blackened oak



superior appearance rating

good appearance rating

moderate appearance rating

As with any product, color and design influence the appearance retention of **Flotex**. Forbo has graded every color in the collection based on its ability to "hide" general soiling that occurs during normal use. The result is a usage classification that can be applied as general advice when concern is focused on the long-term appearance of the **Flotex** design.



flotex[®] calgary

Calgary's multi-layered pattern provides depth and character as well as hides dirt, making the flooring aesthetic and practical. Choose from an inspiring naturalistic color palette of twenty-four colors, including apple, quartz, saffron, and caramel.

approx. pattern repeat:
 length: 40.55" (103 cm)
 width: 19.7" (50 cm)

roll size:
 length: 98.4' (30 lm)
 width: 6'6" (200 cm)
 20 dB



290008 saffron



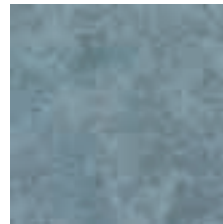
290007 suede



290011 quartz



290018 fossil



290021 aqua



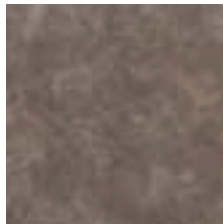
290014 lime



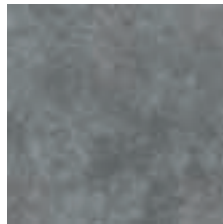
290006 sahara



290013 caramel



290023 espresso



290019 carbon



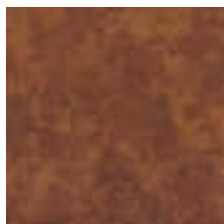
290001 sky



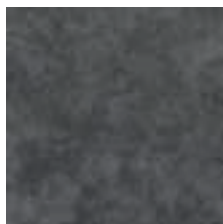
290016 apple



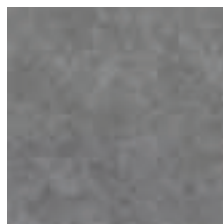
290024 fire



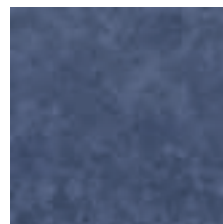
290005 melon



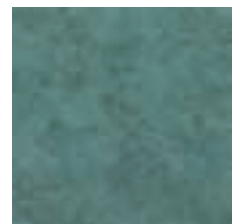
290002 grey



290012 cement



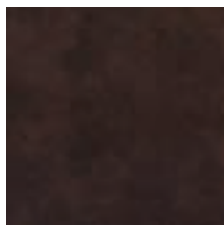
290022 condor



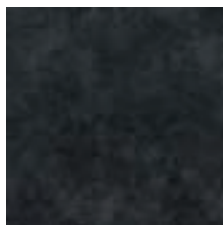
290004 menthol



290003 red



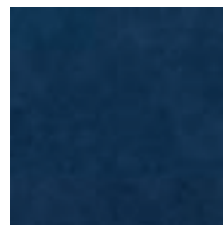
290020 toffee



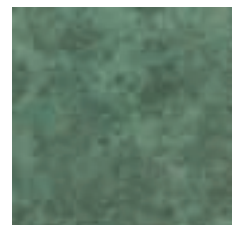
290010 ash



290017 crystal



290015 azure



290009 moss



superior appearance rating



good appearance rating



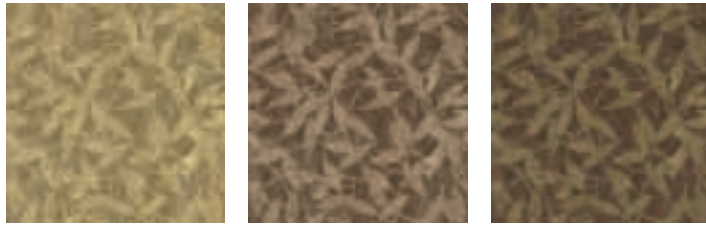
moderate appearance rating

flotex® journeys

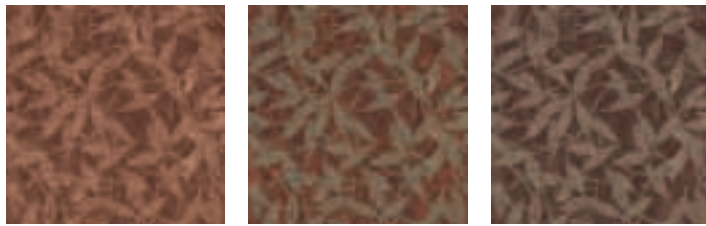
Inspired by walks in nature, **Journeys** combines a timeless leaf pattern with a natural color palette to create an atmosphere of subtle elegance. Available in twelve shades, **Journeys** is ideal for assisted living, long-term living, and health care facilities.

approx. pattern repeat:
 length: 19.7" (50 cm)
 width: 19.7" (50 cm)

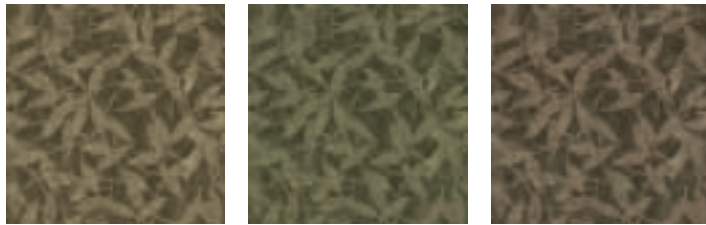
roll size:
 length: 98.4' (30 lm)
 width: 6'6" (200 cm)
 20 dB



630001 yellowstone 630009 mesa verde 630007 joshua tree



630011 grand canyon 630006 sequoia 630008 laurentian mountains



630010 everglades 630005 green mountain 630012 acadia



630004 black hills 630003 glacier bay 630002 cypress falls

superior appearance rating good appearance rating moderate appearance rating



creating better environments

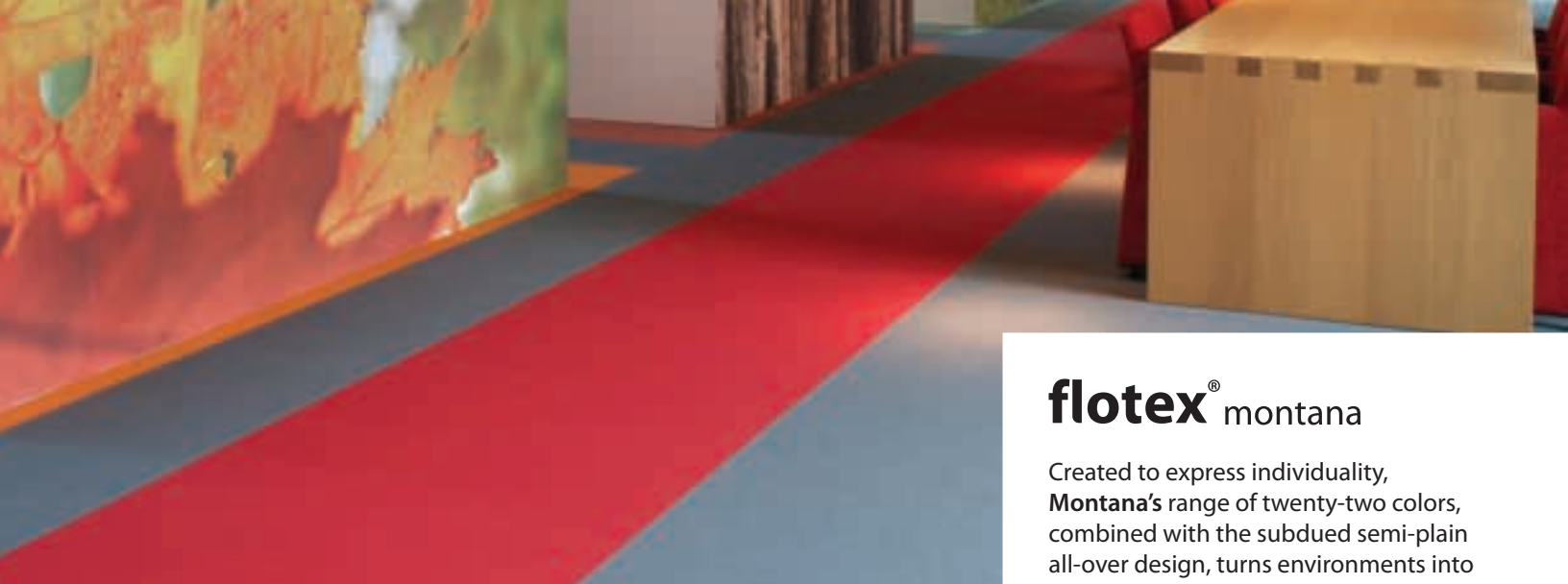
Flotex production is ISO 14001 accredited; demonstrating good environmental management. Also, **Flotex** is the only flocked floor covering to be granted BRE (Building Research Establishment Environmental Assessment Method) certification.

Forbo Flooring Systems always strives for the lowest environmental impact possible when producing, handling, and using **Flotex**. Forbo recycles its own waste, along with third party waste, into its **Flotex** products to optimize the product's environmental profile. Forbo has also joined CARE (Carpet America Recovery Effort) to provide end-of-life recycling options for its **Flotex** and **Coral** products.



Forbo is using Life Cycle Assessment to identify more ways to further optimize its environmental footprint. Forbo complies with the strictest requirements to ensure a healthy and safe environment.

LEED®
Flotex Sheet contributes to LEED® credits in the following category:
Indoor Environmental Quality:
 low-emitting materials (flooring systems) credit 4.3, 1 point (NC, schools, CS, CI) option 2
 low-emitting materials (adhesives & sealants) credit 4.1, 1 point (NC, schools, CS, CI)

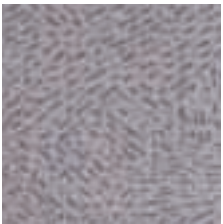


flotex[®] montana

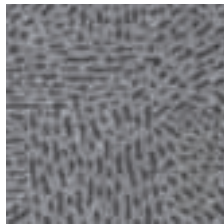
Created to express individuality, **Montana's** range of twenty-two colors, combined with the subdued semi-plain all-over design, turns environments into agreeable working spaces for a broad range of commercial interiors.

approx. pattern repeat:
length: 13.71" (34.8 cm)
width: 19.7" (50 cm)

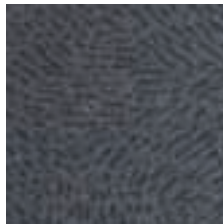
roll size:
length: 98.4' (30 lm)
width: 6'6" (200 cm)
20 dB



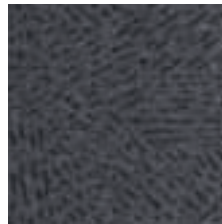
296044
nimbus



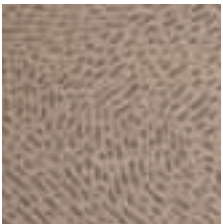
296046
grey



296031
ash



296050
anthracite



296108
pepper



296074
beige



296071
saffron



296072
melon



296003
tangerine



296073
brick



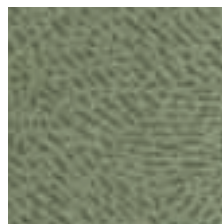
296008
red



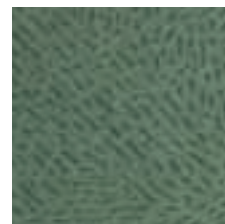
296114
chocolate



296069
wine



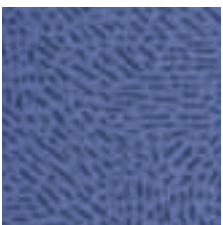
296033
olive



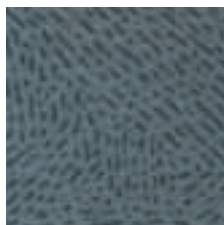
296037
reseda



296019
turquoise



296015
blue



296110
tempest



296012
ocean



296116
azure



296095
cobalt



296016
indigo



superior appearance rating



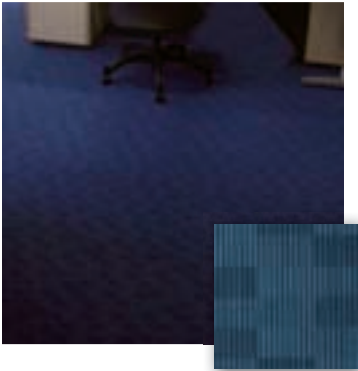
good appearance rating



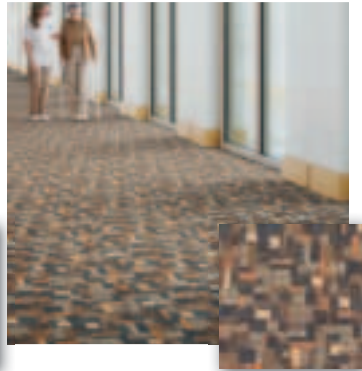
moderate appearance rating

additional patterns of **Flotex Sheet** are available.
please visit: www.forboflooringNA.com
to view the entire collection:

flotex[®] berlin



flotex[®] collage



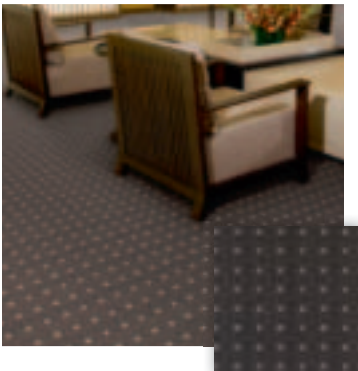
flotex[®] dakota



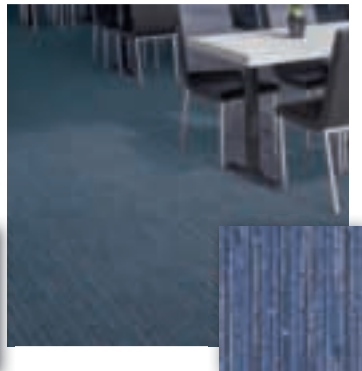
flotex[®] field



flotex[®] grid



flotex[®] manila



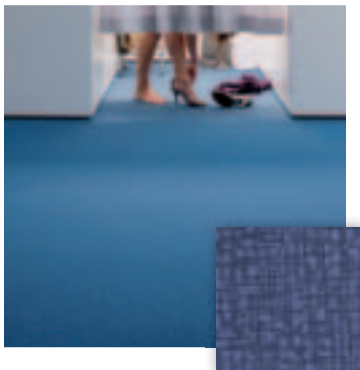
flotex[®] network



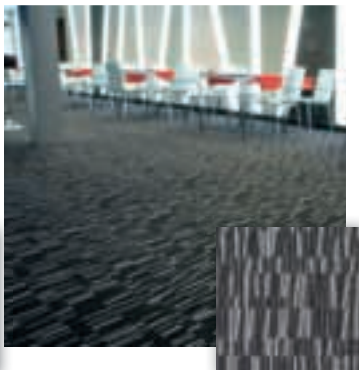
flotex[®] samba



flotex[®] senya



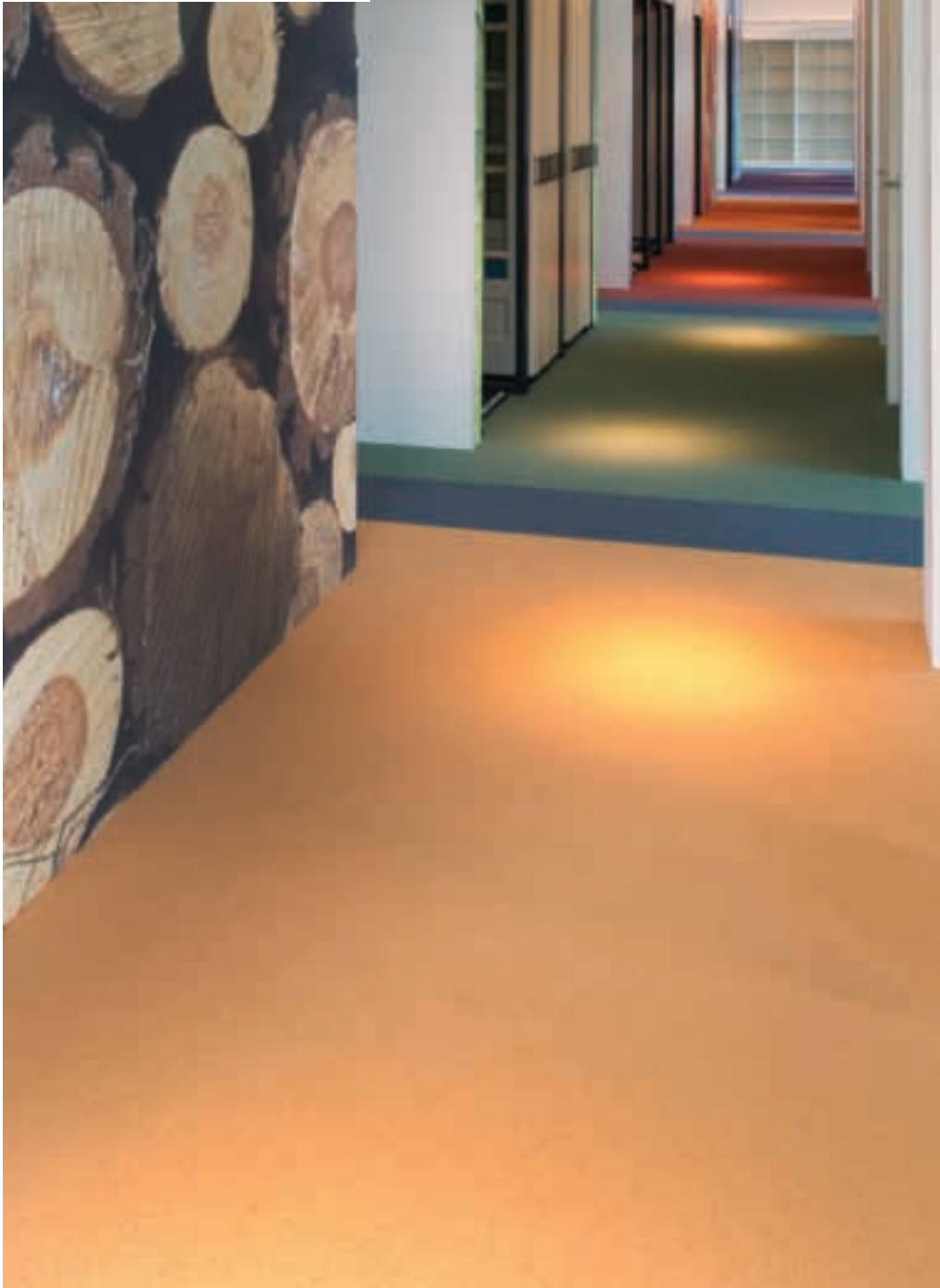
flotex[®] vector



flotex[®] vienna



flotex[®] sheet



Forbo Flooring Systems
North American Headquarters
8 Maplewood Drive
Humboldt Industrial Park
Hazleton, PA 18202
1-800-842-7839
570-459-0771
Fax: 570-450-0258
www.forboflooringNA.com
www.floorcostcomparison.com
info.na@forbo.com

Forbo Flooring Systems
Canada Office
3220 Orlando Drive
Mississauga, ON L4V 1R5
1-866-661-2351
416-661-2351
Fax: 416-661-5362
www.forboflooringNA.com
www.floorcostcomparison.com
info.na@forbo.com



creating better environments

12/11/10K/MDW

Forbo
FLOORING SYSTEMS