

Styles

Sentinel™ Overhead-Braced – Series 400

This style provides the most economical solution for heavy traffic and vandalism-prone areas. Because it requires no special floor or ceiling construction, installation is easy in new or old buildings. The anti-grip headrail provides outstanding rigidity.



Floor-Braced – Series 500

This style complements design with functional performance. Recommended for buildings with high ceilings, it enhances the effect of spaciousness. A minimum 3" concrete construction for anchoring is required.



Ceiling-Hung – Series 600

This style is ideal for areas with low ceilings. Offering an area free from obstruction to allow for fast and easy maintenance, the system requires structural supports in the ceiling for maximum rigidity. Not recommended for ceiling heights over 8 feet.



Floor-to-Ceiling – Series 700

This style is mounted to the floor and ceiling and is recommended where additional stability is desired.

Materials

Baked Enamel

Constructed of 22 gauge galvanized steel, cleaned, primed and finished with high-grade synthetic enamel, and oven baked to provide a mar-resistant finish. Patented Permaseal™ seamless design features unitized construction, which provides superior panel integrity against water penetration to stop panels rusting from the inside.

Stainless Steel

Constructed of 20 gauge, 300 Series stainless steel. Unique Permaseal™ seamless design features unitized construction, which provides superior panel integrity against water penetration to stop panels rusting from the inside.

Plastic Laminate

Constructed of a sandwich of high-pressure decorative plastic laminate bonded to a solid industrial grade particle board core.

Solid Core Phenolic

Constructed of solid phenolic core with a high-pressure decorative matte surface finish as an integral part of the core material.

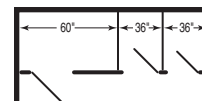
Bradmar Solid Plastic

Constructed from an advanced formula of 1" thick high density polyethylene (HDPE). Available in 21 popular colors.

Types of Layouts

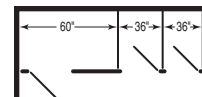
Between-Wall

Refers to a compartment or compartments located between two walls. Shown as BW3 with one 60" compartment and two standard 36" compartments.



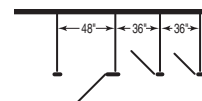
Open-End (In-Corner)

Refers to compartment or compartments that will be affixed laterally to only one wall. Shown as OE3 with one 60" compartment and two standard 36" compartments.



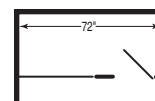
Free-Standing

Refers to layouts where the compartments will be located without being affixed to lateral walls. Shown as FS3 with one 48" compartment and two standard 36" compartments.



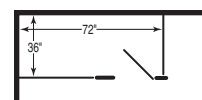
Alcove

Refers to the specific layout where the single compartment will be attached to either two walls or one wall and the end of a run of compartments. Shown as AL72".



In-Corner Alcove

Refers to the specific layout where the single alcove compartment will be in a corner and require an end panel. Shown as an AL72" with an additional 36" panel.



Budget Pricing

The following charts illustrate the relative pricing of various types of partitions.

| Material | Relative Price |
|----------------------|----------------|
| Baked Enamel | Economy |
| Plastic Laminate | Economy |
| Phenolic | Mid-Range |
| Solid Plastic (HDPE) | Mid-Range |
| Stainless Steel | Premium |

| Series | Relative Price |
|--------|----------------|
| 400 | Economy |
| 500 | Mid-Range |
| 600 | Premium |
| 700 | Premium – Plus |

Verify all rough-in dimensions prior to installation.

Consult local and national codes. Conformity and compliance to local and national codes is the responsibility of the installer.