

- ADA and TAS Compliant (Optional Trap Cover Required)
- Serves Two or Three Users at a Time with Same 48" Wide Bowl
- Sleek, Low-Profile Design, Only 38" High
- Constructed of Vandal-Resistant Terreon® Solid Surface Material
- Available in 32 Terreon and Terreon®RE Colors
- Battery or AC-Powered IR Control

## Specifications

### Size and Capacity

Accommodates up to two or three users at a time, using less water, energy and space than lavs equipped with conventional faucets. Each streamformer is equipped with a water conserving 0.5 GPM flow restrictor. Operating range is 20-80 PSI.

### Construction

#### Integrated Bowl and Sprayhead

Constructed of Terreon, a densified solid surface material composed of polyester resin, or TerreonRE, a densified solid surface material composed of a bio-based resin and preconsumer recycled granules. Terreon and TerreonRE are resistant to chemicals, stains, burns and impact. Surface damage can be easily repaired with everyday cleansers or fine grit abrasives. Terreon and TerreonRE are certified by NAHB to meet ANSI Z124.3, Z124.6 and ANSI/ICPA SS-1-2001. Terreon and TerreonRE are GREENGUARD® certified as low-emitting materials.

#### Trap Cover

Optional trap cover is made from vacuum formed 0.187 gauge ABS plastic. Resistant to stains, burns and impact; and will not chip, peel or flake. Choose Coal or Putty color.

#### Vandal Resistance

Top cover, streamformers and infrared sensors are secured from inside the fixture. All valves, water supplies and waste connections can be concealed inside the optional trap cover.

## Code Compliance and Certifications

### ANSI Standards

Terreon and TerreonRE are certified by NAHB to meet ANSI Z124.3, Z124.6 and ANSI/ICPA SS-1-2001.

### UPC Approval

The Express Lav Systems are Uniform Plumbing Code (UPC) approved through the International Association of Plumbing and Mechanical Officials (IAPMO).

- This plumbing fixture is designed for hand washing only. It is not intended to dispense water for human consumption through drinking or for preparation of food or beverages.

### ADA & TAS Compliant

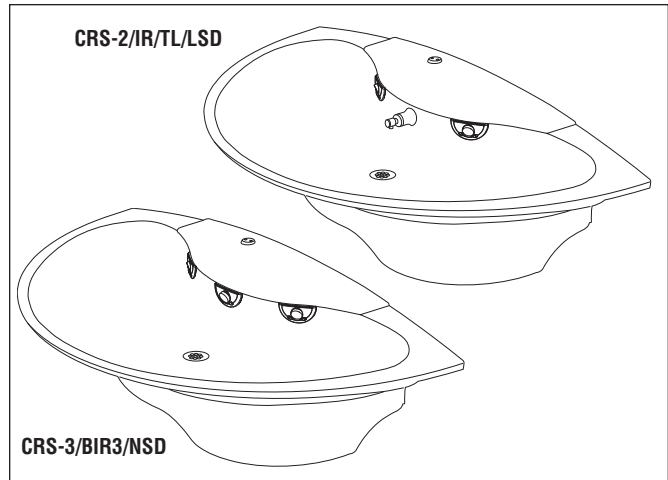
The Crescent is designed to comply with all ADA and TAS guidelines on reaches, clearances and operation when mounted at recommended height dimensions (To be fully ADA-compliant, exposed piping must be covered. Optional Bradley Trap Cover or pipe covering recommended). The low profile design of the Crescent allows up to 2" for the frame of an ADA compliant mirror to be mounted above the fixture. Always check your local and state codes.

Verify all rough-in dimensions prior to installation.

Consult local and national codes. Conformity and compliance to local and national codes is the responsibility of the installer.

Plumbing Fixtures  
Document No. 1081

Page 1 of 4  
This information is subject to change without notice.  
2/10/2010



## Standard Equipment

In addition to the Terreon® bowl and top access cover, the following valves and fittings are standard: stop/strainer/check valve; flexible stainless supply hose, drain spud and lock nut. Stops are 1/2" NPT female.

## Activation Controls

### Battery Infrared Sensor and Valve

Each battery-powered sensor uses a zone-focused infrared transmitting beam, creating a large detection area not exceeding the bowl perimeter. The sensor is not affected by varying skin tones or darkness. When hands enter the detection area, the sensor starts water flow by opening the valve electronically. When hands leave the detection area, the sensor stops the flow of water by closing the electronically activated solenoid valve. The 6-volt DC, electronically activated solenoid valve has few moving parts, providing reliable operation that is unaffected by most chemicals and minerals often present in municipal water supplies. Each station is powered by a single lithium battery. Battery type is Duracell® DL 223A or equivalent (batteries included).

### Adaptive Infrared with 24V Transformer

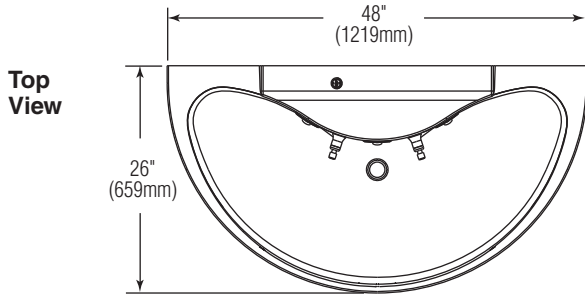
A 24V transformer powers each sensor, which uses a conical shape transmitting beam having a detection area adapted to, but not exceeding, the bowl perimeter. The infrared sensor is not affected by varying color tones or darkness. The adaptive infrared sensor automatically adapts to the bowl within minutes after power is turned on.

Each of the streamformers is controlled by a separate solenoid valve. Hands placed within the bowl are detected by an infrared sensor, which activates a flow of tempered water from one stream former. Shutoff is automatic after hands are removed from the detection area.

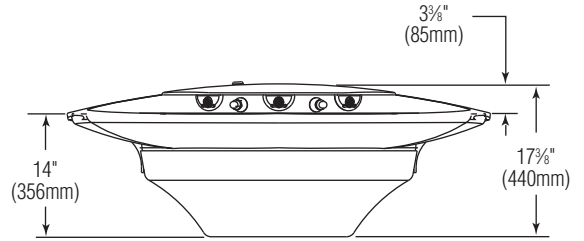
The 24V solenoid valve has few moving parts and is resistant to most chemicals, minerals and impurities in municipal water. The system is powered by a class II, 110/24 VAC plug-in transformer. Location is per local electrical code.



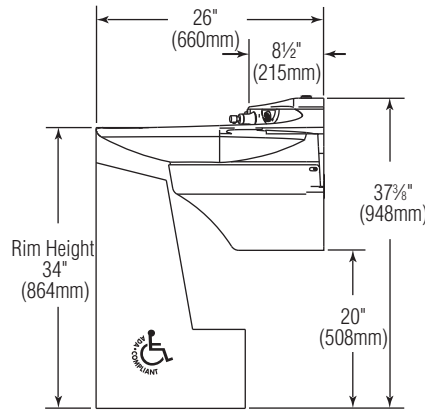
**Dimensions**



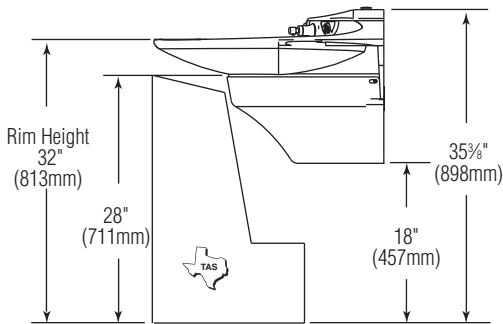
**Front View**



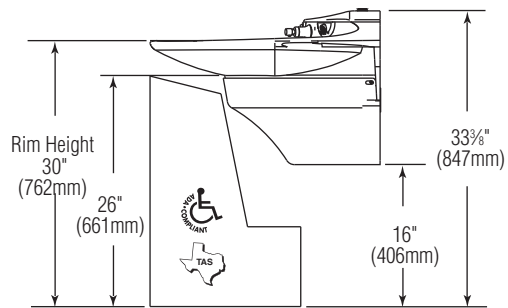
**Side Views**



**Adult Height – (ADA and TAS Compliant)**



**TAS Age 11 through 14 or 15, Grade 6 through 8 or 9**

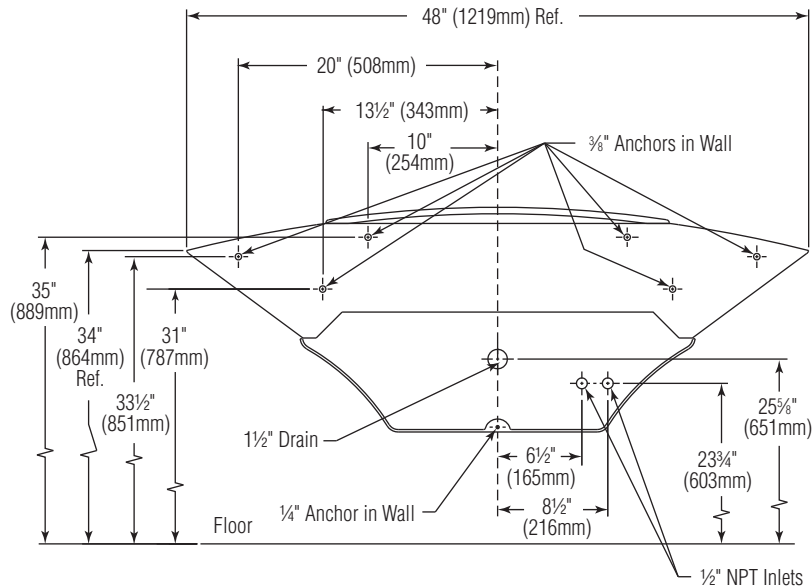


**TAS Age 4 through 10 or 11, Grade K through 5 or 6 & Proposed ADA Juvenile Height**

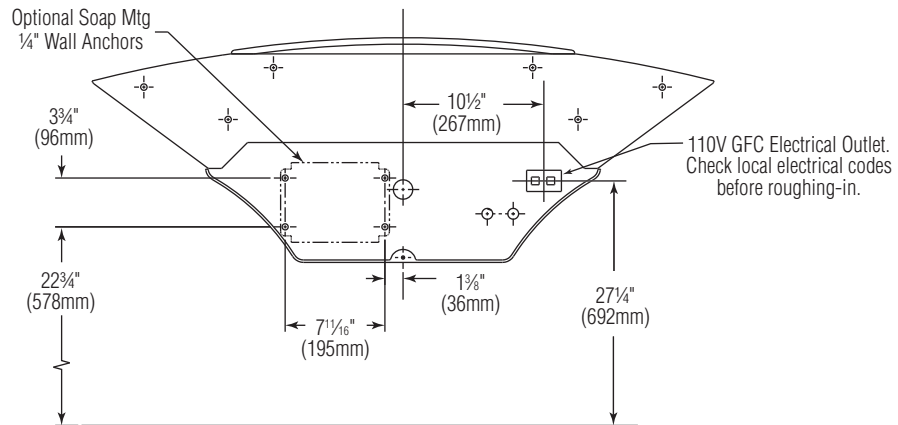
Verify all rough-in dimensions prior to installation.

Consult local and national codes. Conformity and compliance to local and national codes is the responsibility of the installer.

**Rough-In View**



**Rough-In View  
Optional Equipment**



Rim Height	Application	Adjustment
34"	Adult Height ADA, TAS Adult Height	None, as shown
*32"	TAS Ages 11 through 14 or 15, Grades 6 through 8 or 9	*Subtract 2"
*30"	TAS Ages 4 through 10 or 11, Grades K through 5 or 6 and Proposed Juvenile Height ADA	*Subtract 4"
*24"	Preschool (required by some local codes)	*Subtract 10"

\* Adjustments to vertical dimensions for various rim heights.

Verify all rough-in dimensions prior to installation.

Consult local and national codes. Conformity and compliance to local and national codes is the responsibility of the installer.



**Models** (Must select one)

Model	Size	Description
<input type="checkbox"/> CRS-2	48"	Express Crescent Lavatory System Two-Station
<input type="checkbox"/> CRS-3	48"	Express Crescent Lavatory System Three-Station

**Standard Selections** (Must select one from each category)

**Activation Controls (select one)**

<input type="checkbox"/> BIR3	Battery Infrared
<input type="checkbox"/> IR	Adaptive Infrared

**Water Supply (select one)**

<input type="checkbox"/> TL	Single Tempered Line
<input type="checkbox"/> TMA	Vernatherm™ Thermostatic Mixing Assembly (Hot and Cold Supplies)

**Soap Dispenser (select one)**

<input type="checkbox"/> LSD-2	One Integral Soap Dispenser (CRS-2)
<input type="checkbox"/> LSD-3	Two Integral Soap Dispensers (CRS-3)
<input type="checkbox"/> NSD	No Soap Dispenser

**Color of Terreon® Bowl (select one)**

**Standard Colors**

<input type="checkbox"/> E-GRAY	Empire Gray	<input type="checkbox"/> LANNON	Lannonstone
<input type="checkbox"/> PEP-WHT	Peppered White	<input type="checkbox"/> COBBLE	Cobblestone
<input type="checkbox"/> SAND	Sandtrap	<input type="checkbox"/> WHT-SAND	White Sand
<input type="checkbox"/> CHAR	Charcoal Gray	<input type="checkbox"/> LONDON	London Gray
<input type="checkbox"/> JADE	Jade	<input type="checkbox"/> O-TAUPE	Organic Taupe
<input type="checkbox"/> GRAPH	Graphite		

*Designer Colors\* (available at an additional charge)*

<input type="checkbox"/> ARC-CHIP	Arctic Chip	<input type="checkbox"/> COFFEE	Coffee Bean
<input type="checkbox"/> S-SAGE	Summer Sage	<input type="checkbox"/> CORN	Cornfield
<input type="checkbox"/> RIVER	Riverstone	<input type="checkbox"/> BLUESKY	Blue Sky
<input type="checkbox"/> MYSTIC-M	Mystic Moss	<input type="checkbox"/> HILLSIDE	Hill Side
<input type="checkbox"/> STAR-D	Stardust	<input type="checkbox"/> MOUNTAIN	Mountain Top

*TerreonRE Colors (available at an additional charge)*

<input type="checkbox"/> BIRCH-BARK	Birch Bark	<input type="checkbox"/> OCEAN-MIST	Ocean Mist
<input type="checkbox"/> DUSK	Dusk	<input type="checkbox"/> MOONDUST	Moon Dust
<input type="checkbox"/> FERN	Fern	<input type="checkbox"/> OAT	Oat
<input type="checkbox"/> MAIZE	Maize	<input type="checkbox"/> OLIVE	Olive

**Optional Selections**

**Trap Cover:**

<input type="checkbox"/> TC-Coal	Coal
<input type="checkbox"/> TC-Putty	Putty

\*Non-cancelable, not-returnable

Protected by U.S. patent: D433109

Verify all rough-in dimensions prior to installation.

Consult local and national codes. Conformity and compliance to local and national codes is the responsibility of the installer.