



Innovative FRP Panels

Secondary
Space
Solutions.
Second
to none.



FRP

Secondary Space Solutions

Once considered bland and boring, Marlite now offers the industry's most innovative FRP products.

Marlite FRP (fiberglass reinforced plastic) Wall Panels provide ultimate durability, satisfying the most stringent demands.

Marlite FRP is tough, water-resistant, economical to install and easy to maintain.

Only Marlite allows you to design beautiful, affordable interiors for high wear spaces. Once limited to kitchens and restrooms, these products allow you to enhance classrooms, hospital rooms, waiting rooms, offices, hallways, corridors, dining rooms and recreational areas...virtually any space within commercial interiors.

ENVUE™ FRP



Envue FRP – dramatic photo or graphic mural walls.



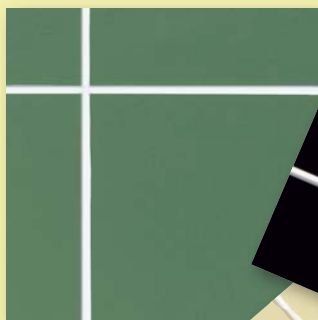
ARTIZAN™ FRP



Artizan FRP – unique surface technology offers unlimited varieties of exceptional woodgrain and abstract patterns.



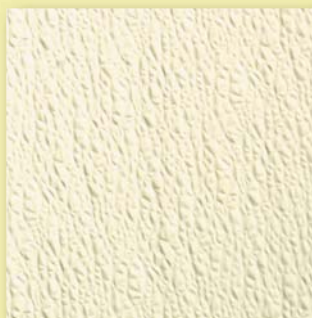
SYMMETRIX™ FRP



Symmetrix FRP – precision grid scorelines provide the look of tile without the installation and maintenance problems.

STANDARD FRP

Standard FRP – classic colors on smooth or pebble textured surfaces.



ARTIZAN™ FRP



Artizan special formula FRP uses unique technology for coating unlimited decorative finishes – abstract patterns, faux woodgrains and custom designs. Printed gravure process creates exceptional image integrity, protected by our tough Sani-Coat sealer.

Features

- Replaces bland walls with exciting ambience.
- Resists impact, stains, bacteria, mold and mildew and won't crack.
- Costs less installed than most HPL or vinyl materials.
- Wipes clean easily with standard cleaning solutions.
- Meets USDA/FSIS requirements.
- Available in Class III/C and Class I/A Fire-rating.
- Panel Dimension 4' x 8' x 3/32".



SANI-COAT
 PRINT COAT
 PRINT COAT
 PRIMER
 VEIL
 FRP

Joinery Options

Color-matched Silicone Sealant



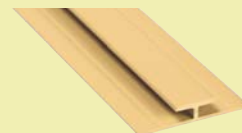
Harmonizing Aluminum Trim Molding



Inside Corner



Outside Corner



Division



Edge

Faux Woodgrains



148 Monticello Anigre



715 Mahogany



925 Autumn Cherry



5408 Monterey Sand



310 Sierra Maple



5409 Townsend



5410 Sebring



5411 Rainier

Abstracts



194 Cody



192 Laramie



211 Grizel



209 Adara



♦181-G1212 Dusk



♦182-G1212 Oxide



♦5415-G88 Coronado



♦5416-G88 Catalina

Textured Abstracts



▼ T-936-G44 Milan



▼ T-938-G44 Tuscany



▼ T-939-G44 Verona

LEGEND:

◆- Groove width: 1/4" Brown Core

▼- Groove width: 1/8" White Core

T- Textured Finish

G1212 - denotes 12x12 score

G88 - denotes 8x8 score

G44 - denotes 4x4 score



◆ T-5417-G88 Salerno



◆ T-938-G88 Tuscany



◆ T-939-G88 Verona



◆ T-5414-G88 Modena



◆ T-5418-G88 Tangier



◆ T-5419-G88 Madras



◆ T-5420-G88 Ceylon



◆ T-5413-G1212 Genoa



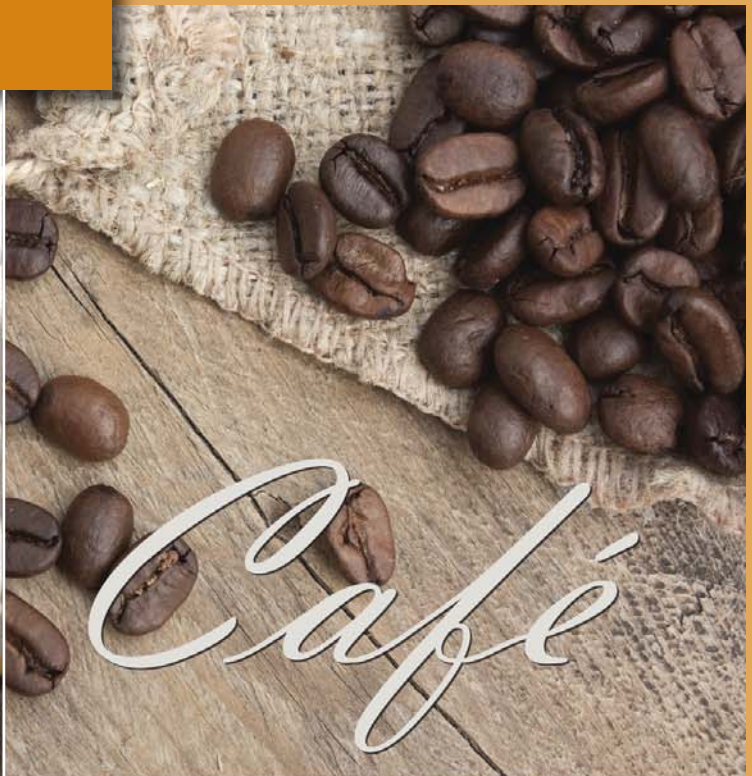
◆ T-5412-G1212 Palermo

Custom Capabilities

Select from our full Marlite Finish Palette at www.marlite.com or create your own Artizan Finish. Simply submit a laminate chip or swatch of the print pattern / color desired, and we'll send a lab sample match in about a week. (Minimum order requirements and other terms apply.)

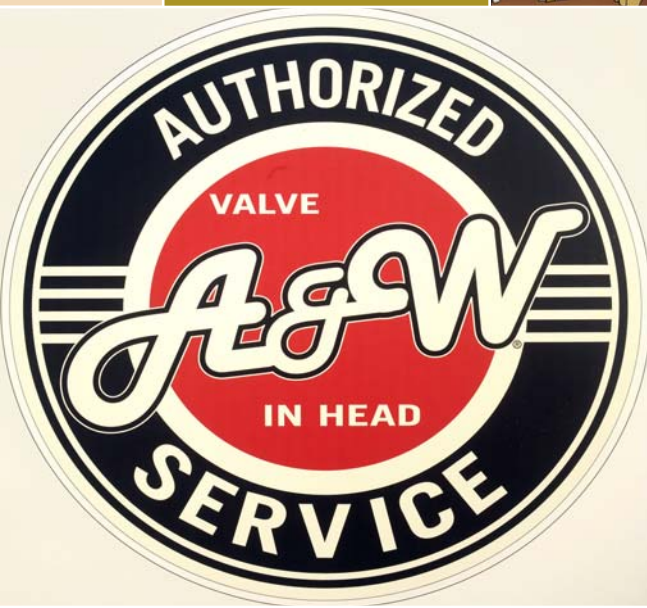
Actual product will vary. Please contact us for samples.

ENVUE™ FRP



espresso





Envue Graphic FRP provides impressive visuals of high-resolution photographs, illustrations, logos, tile designs and custom graphics, all protected by Marlite's tough Sani-Coat sealer. Special application process produces optimum graphic reproduction on a tough, sanitary surface.

Features

- Offers feature wall appeal for high wear spaces.
- Resists impact, stains, bacteria, mold and mildew and won't crack.
- Costs less installed than custom-printed HPL and vinyl wall coverings.
- Wipes clean easily with standard cleaning solutions.
- Meets USDA/FSIS requirements.
- Available in Class III/C and Class I/A Fire-rating.
- Panel Dimensions - up to 4' x 10' x 3/32".

Create with Ease

Simply submit digital high resolution art, and Marlite provides a proof for client approval.

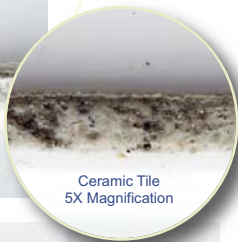




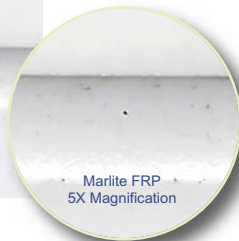
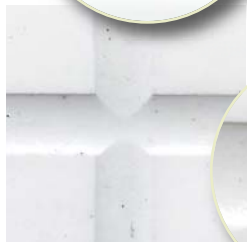
Symmetrix scored FRP Panels with Sani-Coat provides a superior visual appearance over ceramic tile at minimal cost and without the installation and maintenance difficulties. Choose from an array of colors, patterns and scoring options to create a multitude of designs.

Features

- Resists staining, scratching, mold and mildew and won't crack or deteriorate like ceramic tile grout lines.
- Provides outstanding impact resistance due to fiberglass core.
- Costs less installed than most ceramic tile.
- Wipes clean easily with standard cleaning solutions.
- Meets USDA/FSIS requirements.
- Available in Class III/C Fire-rating.
- Panel dimensions – 4' x 8' x 3/32" 4' x 10' x 3/32" (select finishes).



Ceramic Tile
5X Magnification



Marlite FRP
5X Magnification

ASTM D3273-94,
D3274-95



The Coated Groove Advantage

Marlite's innovative Sani-Coat topcoat seals the groove of each Symmetrix Panel offering several advantages over ceramic tile grout lines.

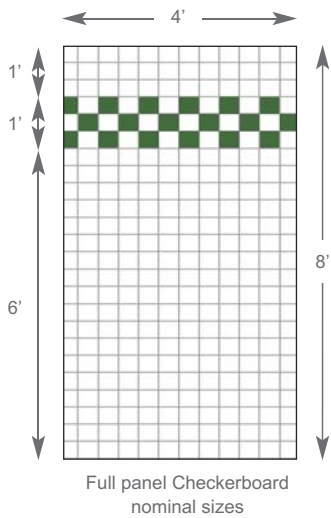
- Protects against mold and mildew growth.
- Is easy to clean, requiring no brushing or scrubbing.
- Won't deteriorate due to moisture or dirt.
- Possesses the same outstanding stain resistance as the panel face.
- Won't crack.

The fiberglass core helps give Symmetrix and Marlite FRP Panels outstanding impact resistance.

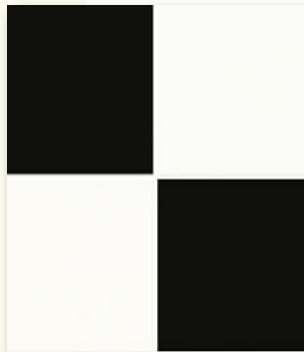
SYMMETRIX™ FRP



Panel dimensions -
4' x 8' x 3/32"
*4' x 10' x 3/32".

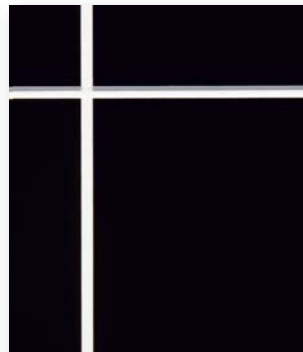


Checkerboard



C 150-G44 White with Black

Accent Colors



C 105-G44 Black

Classic Colors



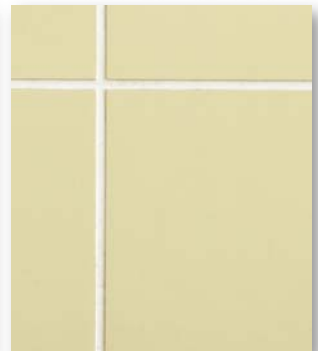
C 100-G44 White*
C 100-G66 White



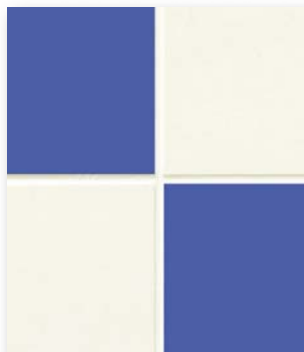
C 151-G44 White with Everglade



C 131-G44 Everglade



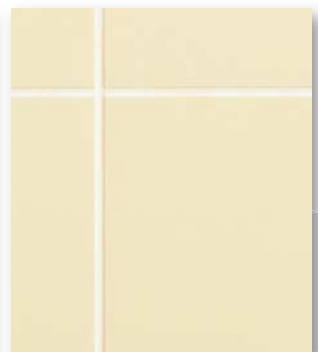
C 118-G44 Almond*



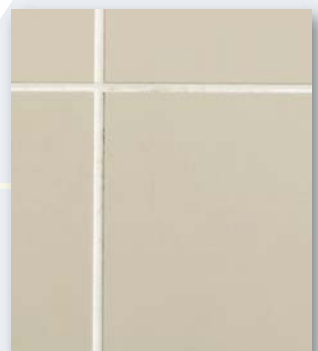
C 153- G44 White with Periwinkle



C 133-G44 Periwinkle



C 140-G44 Ivory



C 145-G44 Silver

Custom Capabilities



Custom Grooves

Feature large grids, small grids, rectangles, brick patterns, diamonds, even company logos and intricate designs.



Custom Colors

Select any color from Lime Green to Raspberry Red.
(Minimum order quantities and other terms may apply.)

STANDARD FRP



Marlite Standard FRP Panels, available in textured and smooth surfaces provide ultimate durability in high wear spaces. Marlite FRP is tough, water-resistant, economical to install and easy to maintain.

Features

- Resists stains, chemicals, scratches and abrasions and possesses high impact strength.
- Is resistant to moisture, making the panel ideal for wet environments and does not support the growth of mold or mildew.
- Costs less installed than most other high impact product.
- Wipes clean easily with standard cleaning solutions.
- Meets USDA/FSIS requirements.
- Approved by Canadian Food Inspection Agency and Agriculture Canada.
- Available in Class III/C and Class I/A Fire-rating.
- Panel Dimensions – 4' x 8' x 3/32", 4' x 9' x 3/32" (select finishes) and 4' x 10' x 3/32".



STANDARD FRP



Dimensions

4' x 8' x 3/32",

4' x 10' x 3/32"

*Also available in

4' x 9' x 3/32".

Pebbled Surface



P 100 White *
P 100 White Class A *



P 118 Natural Almond *
P 118 Nat. Almond Class A



P 145 Silver *
P 145 Silver Class A

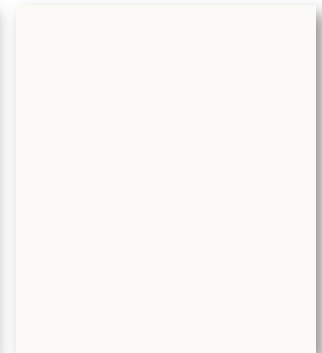


P 199 Bright White *
P 199 Bright White Class A

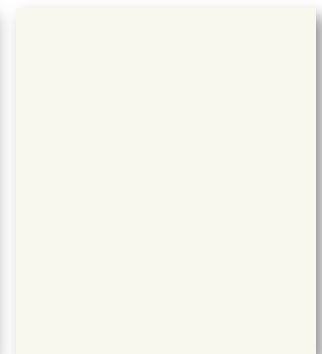
Smooth Surface



S 100 S/2/S White



S 100G White



S 118G Almond



P 106 Beige
P 106 Beige Class A



P 140 Ivory *
P 140 Ivory Class A



P 151 Light Grey *
P 151 Light Grey Class A



P 807 Black

FRP CEILING PANELS

* FRP P100CP White

Fire Rating:
Class C
Class A
Size:
2' x 4' x .090
2' x 2' x .090

* FRP P100CP w/Gypsum

Fire Rating:
Class A
Size:
2' x 4' x 23/32*
.090 FRP Laminated
to 5/8" Fire Rated
Gypsum

*Ceiling Grid System
available upon request.

Simplified Installation

Artizan, Symmetrix and Standard FRP install easily and in a fraction of the installation time of ceramic tile. Symmetrix features scored grout lines, offering

the same look as ceramic tile without the need for messy grout/sealer application.



FRP panels can be easily cut with shears or a carbide tip saw.



Simply apply Marlite Brand Adhesive to the back of FRP panels and apply them to the subwall.

Division Molding Installation



Adhere panel to subwall.



Slide Marlite Division Molding under edge of first panel.



Staple Division Molding to subwall along revealed edge.



Adhere second panel in place and repeat.

(Note: For wet environments, sealant is required in molding channels.)

Seam Joint Installation



Place a 6 penny spacing nail between panels.



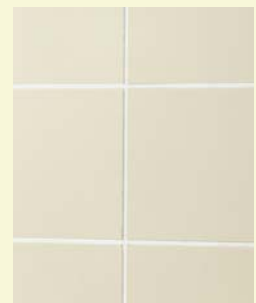
Remove nail and protect panel face with tape. Wait one hour.



Place a bead of harmonizing Marlite Silicone Sealant in the gap.



Using your finger, place a slight indentation in the gap.



Remove the tape to reveal a grooved and matched seam joint.

Actual application requirements may vary, please call Marlite for complete installation instructions.

Accessories

A Complete System

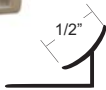
Artizan, Symmetrix and Standard FRP Panels are a part of a complete system, including PVC and Aluminum Trim and Base Molding, Outside Corner Guards, Adhesives and Silicone Sealants.

PVC Trim Molding

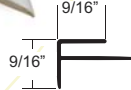
Color-integral PVC Trim Molding provides a professionally finished appearance and simplifies installation. Nailing/staple flanges make them easy to install. Typically used in conjunction with Symmetrix and Standard FRP.

Length: 8' and 10' **Material:** Extruded PVC with integral color.

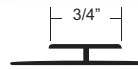
Colors: Standard Marlite FRP colors - White, Beige, Natural Almond, Ivory, Silver, Light Grey, black.



Inside Corner M350



Outside Corner M360



Division M365



Edge M370

Harmonizing Aluminum Trim Molding

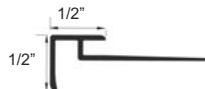
Durable painted Aluminum Molding harmonizes with any woodgrain or abstract Artizan FRP finish.

Length: 8' **Material:** Extruded Aluminum with durable finish.

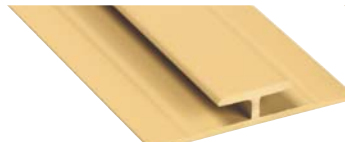
Colors: As specified with Artizan FRP.



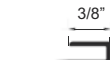
Inside Corner A551



Outside Corner A560



Division A565



Edge A570

Bright Anodized FRP Molding

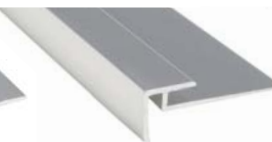
Durable painted Aluminum Molding harmonizes with any woodgrain or abstract Artizan FRP finish.

Length: 8' **Material:** Extruded Aluminum with durable finish.

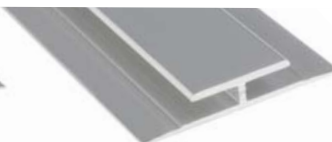
Colors: As specified with Artizan FRP.



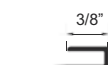
Inside Corner F550



Outside Corner F561



Division F565



Edge F570

Outside Corner Guards

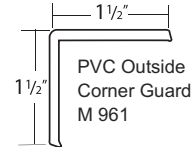
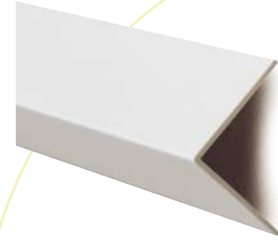
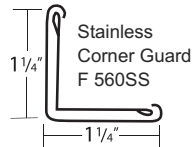
Outside Corner Guards provide added corner protection in high-traffic, high-abuse areas.

Length: 8' and 10'

Material: Stainless Steel or Rigid Extruded PVC with integral color.

Colors: Most standard Marlite FRP colors - White, Natural Almond, Ivory*, Silver*, Light Grey*

* denotes 10' length only



Base Molding

Patented-design Base Molding simplifies installation and helps totally seal the panel system.

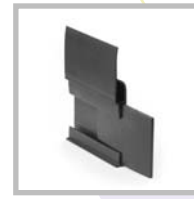
Length: 4" wide x 10' long

Material: Rigid extruded PVC with integral color.

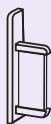
Colors: P 200 Black, P 203 Quarry Red



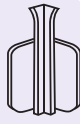
FRP Base Molding
M 612



Butt Joint Connector
Included with Base Molding strips



LH End Cap
M 620



Inside Corner
M 651



Outside Corner
M 660



RH End Cap
M 625

Adhesives & Sealants

Specially developed for use with Artizan, Symmetrix and Standard FRP when used on approved subwalls such as drywall and plywood. When used in conjunction with the complete line of accessories, these adhesives and sealants ensure the system's ease of installation and performance.

C-551 Marlite FRP Adhesive

A high quality, low odor, non-flammable latex-based FRP adhesive for application over approved porous subwalls such as drywall or plywood. The adhesive meets low V.O.C. requirements. Size: 3.5 gallon can.

C-375 Marlite Construction Adhesive

A strong, flexible, moisture-resistant, all-purpose adhesive formulated for fast, easy application. This adhesive is an excellent choice for use over many non-porous surfaces. Synthetic rubber base remains pliable to compensate for movement of structural surface up to 1/8". Size: 3.5 gallon can.

MS-250 Clear, MS-251 White, & Color Matched Marlite Silicone Sealant

Waterproof silicone sealant for interior or exterior use. This sealant is extremely flexible and dries to a gasket-like finish. Size: 10-oz cartridge.



Trowel size: 3/16" W x 1/4" D x 1/2" C-C V-Notch

Surface Properties

All Artizan, Symmetrix and Standard FRP panels tested in accordance with the following specifications:

Abrasion: ASTM D 968-81

Adhesion: ASTM D 2197-91/ASTM D 3002

Cleanability/Stain Resistance: NEMA LD 3-2000 SEC. 3.4

Steam: NEMA LD 3-2000 SEC. 3.5

Physical Properties and Test Results

Property	ASTM Procedure	Typical Value				
		Marlite FRP	Marlite FR Class I/A	Symmetrix	Artizan Class C	Artizan Class A
Flexural Strengths (psi)	D790	1.7 x 10 ⁴	1.0 x 10 ⁴	1.6 x 10 ⁴	1.3 x 10 ⁴	1.2 x 10 ⁴
Flexural Modulus (psi)	D790	6.0 x 10 ⁵	3.1 x 10 ⁵	1.0 x 10 ⁶	3.1 x 10 ⁵	6.5 x 10 ⁵
Tensile Strengths (psi)	D638	8.0 x 10 ³	7.0 x 10 ³	7.5 x 10 ³	1.1 x 10 ⁴	6.5 x 10 ³
Tensile Modulus (psi)	D638	9.43 x 10 ³	1.6 x 10 ⁶	1.7 x 10 ⁶	4.7 x 10 ⁵	5.1 x 10 ⁵
Barcol Hardness	D2583	40	35	50	32	41
Izod Impact Strength (ft #/in)	D256	7.0	7.2	13	6.26.2	
Thermal Coefficient Of Lineal Expansion (in/in/F _i)	D696	1.57 x 10 ⁻⁵	1.57 x 10 ⁻⁵	1.39 x 10 ⁻⁵	1.39 x 10 ⁻⁵	1.39 x 10 ⁻⁵
Water Absorption (%)	D570	.17	.72	.15	1.10	0.94
Specific Gravity	D792	1.53	1.80	1.80	1.80	1.80
Fire Ratings	E-84	Class III/C	Class I/A	Class III/C	Class III/C	Class 1/A
Flame Spread		<200	<25	<200	<200	<25
Smoke Generation		<450	<450	<450	<450	<450
CAN/ULC Fire Ratings	S102-M88					
Flame Spread		<90	<25			<20
Smoke Generation		<190	<450			<450
Mold Prevention	D6329-98	passed	passed	passed	passed	passed
Fungi Resistance	G21-96	passed	passed	passed	passed	passed

See Marlite's solutions for Feature Walls, Primary Spaces and Plank for Secondary Spaces. For specifications, technical details and installation instructions please visit us at www.marlite.com.

