

## FRAMING: STANDARD AND BASE FRAMES

### Frame Cross Section And Size Selection Information:

### Da-Lite's Polacoat®, Da-Plex And Da-Glas Screens

#### Factory Framed Screens:

- For installation ease, screens are available in factory frames.
- All frames are of 6063-T5 aluminum alloy with 204-A1R1 black anodized finish.
- Framed screens are shipped as a complete assembly.
- Easily installed in finished openings by carpenters, framed screens eliminate on-site glazing costs.

#### To Install:

1. Set screen in opening.
2. Trim out with decor matched moldings.
3. Shim when necessary.

#### Select the Frame:

##### Standard Frame

- Same rugged construction and design as Deluxe Frame, but 2" x 1 3/4" (50.8 mm x 45 mm).
- For screen panels up to 6' x 10' x 3/8".
- Standard factory framed screens are captured by two glass stops, centered and mounted to the base frame.
- Screens are positioned in frames with setting blocks on each screen edge and are centered between the faces of the glass stops with flexible extruded gaskets.
- Available in an anodized black finish.
- Frame dimension equals viewing area plus 4".

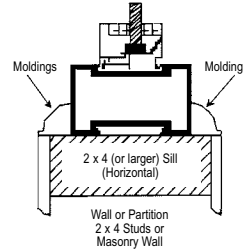
##### Base Frame

- Recommended for use with 1/4" Da-Plex in sizes up to 6' x 8' and 1/4" Da-Glas in sizes up to 4' x 5'.
- Lightweight extruded aluminum U-channel. 23.81 mm wall thickness and weighs approximately 5 oz. per linear foot (0.142 kg/m). Secured at the corners with self-tapping screws and mounting clips.
- Mitered corners eliminate rear light leaks without caulking.
- Available in an anodized black finish.
- Frame dimensions equal viewing area plus 2 1/2".

#### Specify the Size of Framed Screens:

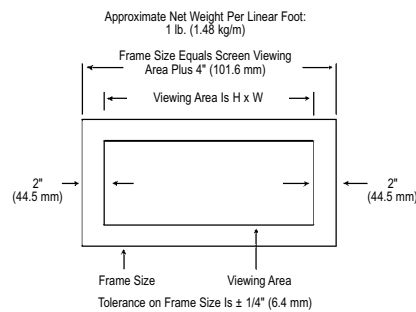
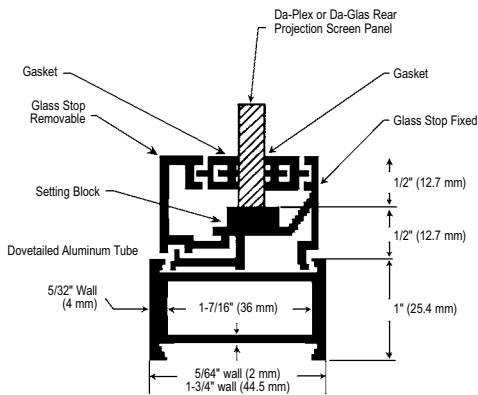
The customer must specify overall size of the frame outside dimension (not size of opening) and must be careful to allow for the space required to fit the factory framed screen into the opening.

#### Framing Detail Factory-Installed Frame:



Framed Da-Lite in-wall rear projection screens should be mounted in a vertical position, resting on the bottom of the frame on a suitably reinforced surface in an aperture in a wall or partition. The unit should be shimmed and fixed in position with appropriate moldings to lock the framed panel in position.

#### Standard Frame



#### Base Frame

