



PLANK GRATING

McNICHOLS® Quality Plank Grating includes a variety of channel configuration choices and walkway styles.

Plank Grating is a one-piece construction product that is lightweight and offers significantly high slip resistance surfaces. In addition to low material cost and nominal installation cost, Plank Grating also provides long-term value with rust-resistant materials and finishes.

PRODUCT OPTIONS

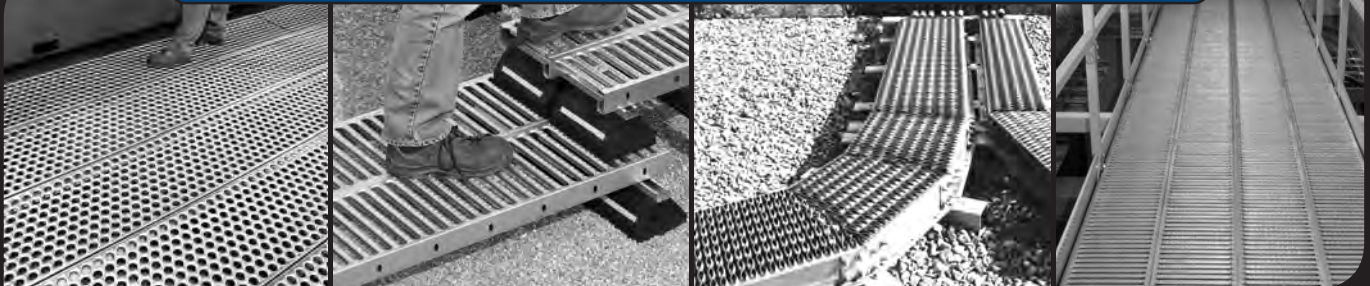
	GRIP STRUT®	PERF-O GRIP®	GRATE-LOCK®	DIAMONDBACK®	HEAVY-DUTY PLANK
Pattern Types					
	pg. 34 / webcode: GPS1	pg. 37 / webcode: GPP3	pg. 39 / webcode: GPL1	pg. 40 / webcode: GPB1	pg. 40 / webcode: GPR1

PRODUCT SPECIFICATIONS

Styles	GRIP STRUT® Plank & Walkway, Heavy-Duty Plank & Walkway	PERF-O GRIP® Plank & Walkway, TRACTION TREAD™ Planks	GRATE-LOCK® Plank with Grip or Smooth Surface	DIAMONDBACK® Solid or Vented	HD Series Plank Grooved or Smooth Surface
Materials	Plain, Galvanized and Stainless Steel, Aluminum	Plain and Galvanized Steel, Aluminum	Galvanized Steel	Aluminum 6061-T6	Aluminum
Heights/Depths	Plank: 1-1/2", 2", 2-1/2", 3" Walkway: 4-1/2" HD Plank: 2" HD Walkway: 5"	Plank: 1-1/2", 2" Walkway: 5"	1-1/2", 2-1/2", 3" (4" special order)	1", 1-1/2", 2"	3/4", 1", 1-1/2"
Widths	Plank: 4-3/4", 7", 9-1/2", 11", 18-3/4", 24" Walkway: 24" HD Plank: 9-1/4" HD Walkway: 30"	Plank: 5", 7", 10", 12", 18" Walkway: 24, 30", 36"	9", 12"	6", 12"	6"
Lengths	10' or 12' (longer by special order)	10', 12' (longer by special order)	12', 20', 24' (2-1/2" Ht.), 12' (1-1/2" Ht.), 24' (3" Ht.)	12'	20', 26'
QR Code (Scan using a QR Reader on your smart phone)					

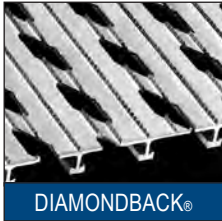
Not all product combinations are available. See mcnichols.com for availability.

PLANK GRATING APPLICATIONS



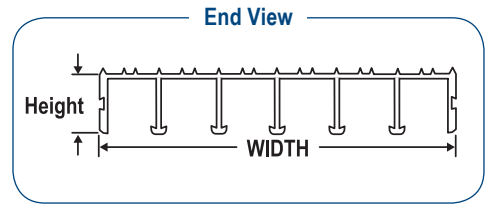
DIAMONDBACK® DECKPLATE

DIAMONDBACK® Deckplate offers excellent strength and stability for walkways, platforms, mezzanines, catwalks and other unsupported structures. The ventilated design prevents the build-up of dirt, grease and snow. When slip resistance is important, our serrated vented plank is the answer.



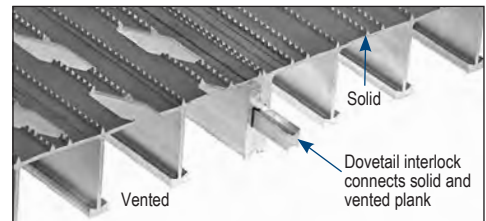
DIAMONDBACK® WEB CODE: GPB1

DIAMONDBACK® Deckplate Planks are made using an aluminum extrusion process. The surface of the plank is vented with angled diamond-shaped openings along with lines of raised serrations running parallel to the plank length.



PRODUCT OPTIONS

- Materials: Aluminum 6061-T6
- Surfaces: Vented or Solid
- Heights: 1", 1-1/2", 2"
- Widths: 6", 12"
- Lengths: 12'



DIAMONDBACK® Tread Plate Interlocking Flooring has serrated ridges to help provide slip resistance.

ALUMINUM LOAD TABLE: DIAMONDBACK® DECKPLATE																						
Item Number	#/LF	Width	Height	SPAN																		
				2'	2'6"	3'	3'6"	4'	4'6"	5'	5'6"	6'	6'6"	7'	7'6"	8'	8'6"					
T706100212 (vented)	1.45	6"	1"	U	1328	850	590	433	332	262	212	175	147	U - Uniform Load - # per sq. ft. D - Deflection in Inches C - Concentrated Load - # per ft. grating width								
				D	.199	.312	.448	.610	.797	1.008	1.299	1.502	1.787									
T712100112 (solid)	3.06	12"	1"	C	1328	1062	885	759	664	590	531	483	442									
T712100212 (solid)	2.68	12"		D	.182	.249	.359	.489	.638	.807	.996	1.206	1.433									
T712151212 (solid)	3.67	12"	1-1/2"	U	2612	1671	1161	853	653	516	418	345	290						247	213	185	163
				D	.184	.214	.318	.485	.547	.692	.855	1.033	1.230						1.443	1.673	1.915	2.184
				C	2612	2089	1741	1492	1306	1161	1044	949	870	803	746	696	653					
				D	.109	.171	.246	.335	.438	.554	.683	.827	.984	1.154	1.340	1.537	1.750					
T712200112 (solid)	4.30	12"	2"	U	4193	2683	1863	1369	1048	828	671	554	466	397	342	298	262	232				
D	.187			.197	.251	.320	.418	.529	.653	.789	.940	1.104	1.279	1.468	1.671	1.886						
T712200212 (vented)	3.91	12"	2"	C	4193	3354	2795	2396	2096	1863	1677	1524	1397	1290	1198	1118	1048	986				
D	.084			.131	.188	.256	.334	.423	.522	.632	.752	.883	1.024	1.181	1.337	1.509						

Loads and deflections in this table are theoretical and based on blending stress of 19,000 psi. The specifier is responsible for verifying conformance of this product with applicable codes associated with its intended use. Spans in the blue shaded area will give deflection less than 1/4" for a uniform load of 100 pounds per sq. foot.

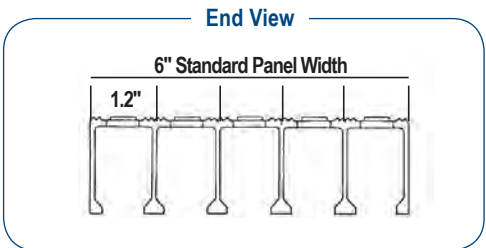
HEAVY-DUTY PLANK

An alternative to bar grating, Aluminum Plank is structurally sound and cosmetically attractive. Heavy-Duty Series Aluminum Planks are made using an extrusion process. The interconnecting webs offer a flush top walking surface.



HEAVY-DUTY PLANK WEB CODE: GPR1

The surface on standard HD Series plank is vented with rectangular-shaped openings with long raised grooves running parallel to the plank length and additional short raised grooves perpendicular to the slot width.



PRODUCT OPTIONS

- Materials: Aluminum
- Heights: 3/4", 1", 1-1/2", 2"
- Widths: 6"
- Lengths: 20', 26'



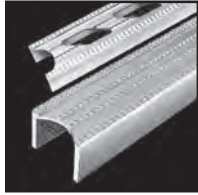
Close up of HD Plank

LOAD TABLE: ALUMINUM PLANK (6" WIDTH)																		
Series	Height	#/LF	Ped Span Inches	SPAN														
				2'	2'6"	3'	3'6"	4'	4'6"	5'	5'6"	6'	6'6"	7'	8'			
HD20	3/4"	1.8	39"	U	435	278	193	142	108	85	69	Theoretical values based on unit stress of 12,000 psi. U - Safe Uniform Load - # per sq. ft. D - Deflection in Inches C - Safe Concentrated Load - # per ft. width at mid span						
				D	.121	.237	.342	.465	.608	.770	.950							
				C	435	348	290	248	217	193	174							
				D	.121	.190	.273	.371	.485	.614	.760							
HD30	1"	2.2	49"	U	833	533	370	272	208	164	133						110	92
				D	.124	.193	.279	.380	.496	.628	.775						.938	1.117
				C	833	666	555	476	416	370	333	302	277					
				D	.099	.155	.223	.304	.396	.502	.620	.748	.891					
HD50	1-1/2"	3.4	67"	U	2167	1387	963	707	541	428	346	286	240	205	176	135		
				D	.090	.141	.203	.277	.362	.458	.566	.684	.815	.956	1.109	1.449		
				C	2167	1734	1445	1238	1083	963	867	788	722	666	619	541		
				D	.072	.113	.163	.221	.289	.366	.452	.547	.651	.764	.887	1.157		



LADDER RUNGS

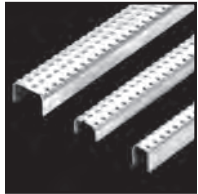
When strength, safety and weight are considerations McNICHOLS® Ladder Rungs are the product of choice. All styles have varying degrees of slip resistance to help provide dependable footing indoors and out. [WEB CODE: LR01](#)



DIAMONDBACK® RUNGS

DIAMONDBACK® Ladder Rungs are offered in .109" aluminum, available in solid or vented. Ladder Rungs are 1.39" high x 1.75" wide and available in 144" lengths or cut-to-size. Radius end cut available by special order. Solid serrated surface also available.

PRODUCT OPTIONS			
Material:	6061-T6 Aluminum	Widths:	1.75"
Gauges:	.109	Lengths:	144"
Height:	1.39"	Item Number:	T7LR517012 - Diamondback Solid



TRACTION TREAD™ RUNGS

TRACTION TREAD™ Ladder Rungs are available in plain steel, stainless steel, galvanized steel or aluminum. They are available in 1.25" to 2.25" widths, 48.75" or 60" lengths, and range from 1.125" to 1.50" high. **TRACTION TREAD™** Ladder Rungs come in 2, 3 or 4 button rows.

PRODUCT OPTIONS			
Materials:	Plain Steel, Galvanized Steel, Aluminum, Stainless Steel	Widths:	1.25", 1.625", 2.25"
Gauges:	11, 13 - Steel 14, 16 - Stainless Steel .125 - Aluminum	Lengths:	48.75", 60"
Item Numbers:	M6L6ST2460 - 2 Row, 11 Ga. Plain Steel M6LRST3860 - 3 Row, 11 Ga. Plain Steel		
Heights:	1.125", 1.50"		



GRIP STRUT® RUNGS

GRIP STRUT® Ladder Rungs have channels of diamonds that provide high traction footing in all directions. These aggressively treated rungs come in plain steel or galvanized and are 1.125" high. Standard lengths 120" or cut-to-size, standard width is 2.50". Diamonds can run the opposite direction by special order.

PRODUCT OPTIONS			
Materials:	Pre-Galvanized, Plain Steel	Widths:	2.50"
Gauge:	14	Lengths:	120"
Height:	1.25"	Item Number:	2601101410 - 1 Diamond Plain Steel



LADDER RUNG COVERS

GRIP TIGHT® Rung Covers are constructed with slip resistant aluminum oxide grit over 16 gauge pre-galvanized metal. Where open area is not a concern, **GRIP TIGHT®** Covers are a great option. These rungs are stocked in .75" or 1" heights, in 120" lengths or cut-to-size.

PRODUCT OPTIONS			
Material:	Aluminum Grit on Galvanized Steel	Widths:	.75", 1"
Gauge:	16	Lengths:	120"
Heights:	.75", 1"	Item Number:	6MLR347010 - .75" x .75" x 120"

CLIPS & FASTENERS

Shown below is partial listing of our clips and fasteners. Please see mcnichols.com/products/accessories/clips-anchors-etc/ for the complete selection.



TYPE FSSGF - Stainless Steel fastener has specially formed G-Clip bottom with a flat, bearing pad area facing up to Fiberglass structural members, protecting surfaces.
TYPE Z/J - Stainless 316 or 304 (1", 1-1/2" or 2") Molded Fiberglass; secures planks to support frames. No hardware. For fastener and hardware specify Type J.
TYPE F - Stainless 316 (1", 1-1/2" or 2") For Molded Fiberglass end planks to join side bars that are butted end to end.
TYPE MT - Stainless Steel 316 (1", 1-1/2", or 2") Pultruded Fiberglass T-Bar Grating; to secure planks to support frame using two adjacent bars for support. Specify bar spacing, height.
TYPE GM - Galvanized Carbon Steel. For mounting other devices to grating surface. 1/2" x 3" stud with patented base includes 1/2" nut and plate which sits above the grating and is tightened down. Available in Stainless 316.
TYPE CB - Galvanized Steel, Aluminum, or Stainless Steel (specify). Saddle Clip is a positive fastener for welded, press-locked, locked by swaging gratings with bearing bar spacing of 15/16" (CA) or 1-3/16" (CB). U-shaped fastener is placed over two main bearing bars and screwed to grating support. (Screw, nut, washer, etc. NOT included.)
TYPE GG - Galvanized, Stainless Steel or Aluminum (for 1" to 5" bar height; 1/4" to 6" flange or structural member thickness—specify). Hold Down Fastener attaches grating to structural shape in a horizontal plane. Standard GG fasteners are for grating with 7/8" to 1" gap between bearing bars (inquire for closer spacing).



TYPE SSGC - Stainless Steel 316 grating fastener used to fasten close-mesh bar grating to structural shapes, where the structural flange is in a horizontal plane. Unique narrow width accommodates very narrow (3/8") grating slots. (Special order.)
TYPE M - Stainless 316 (1", 1-1/2" or 2") Molded Fiberglass; secures planks to support frame using two adjacent bars for support.
TYPE RT/RI - Stainless Steel 316 (any height) hold down fastener for Pultruded Fiberglass T-Bar or I-Bar that slides between two bars and holds the bottom flange down to support frame. Fastener is below walking surface. Specify bar spacing, type.
TYPE GN - Narrow Galvanized Carbon Steel fastens 15/16" spacing bar grating to structural shapes where structural flange is in a horizontal plane. (Special order.)
TYPE GC - Galvanized or Stainless Steel. Hold Down Fastener for smaller openings between two adjacent bars or plate to existing structure/frame. (Cap screw not included.)
TYPE GFSS-1 Has stainless steel investment casting body. Bracket of 14 gauge 304 Stainless. One offset wing fits spacing between bars 5/8" to 1-3/8". 302 Stainless screw accommodates up to 1-3/4" of grating depth.
TYPE GFS (Not shown) Cast malleable iron body galvanized. Designed to fit bearing bar thicknesses 1/4", 3/16", and 1/8" at 1-3/16" centers. Stepped tail allows fastener to fit various bearing bar heights to 2-1/4" and beam flanges from 1/8"-3/4". (Screw included.)