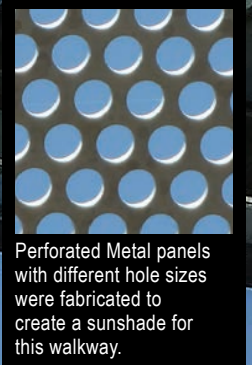


The
Hole
Story[®]



Perforated Metal panels with different hole sizes were fabricated to create a sunshade for this walkway.

Chandler City Hall Walkway Sunshade

McNICHOLS[®] Designer Metals

AESTHETIC . . . SUSTAINABLE . . . VERSATILE . . .



Our Architectural Design Team Is Ready to Serve!

Architects, contractors and designers choose to incorporate **McNICHOLS®** Designer Metals into their projects - because of their versatility and also their beauty. Selections include perforated and expanded metal, wire mesh and textured metals in a myriad of materials and styles.

Architectural Design Team

Understanding how product options like product configuration, material type, gauge, open area, recycled content, finish and other variables may influence your design for a successful project. Our Architectural Products Team can discuss which products and options are best suited to your design requirements.

An Architectural Design Team Member is available to begin discussing your vision. Please call **866.754.5144** today.

We look forward to serving you!



Visit mcnichols.com and let **McNICHOLS® Virtual Designer** inspire creative, new ideas for your next project!

ABOUT THE COVER

Chandler City Hall's walkway sunshade helps cool the first floor offices on two sides of their building while providing shade for pedestrians and added weather protection. The high tech sunshade was constructed out of **McNICHOLS®** Perforated Metal. The designer chose material with three round hole pattern openings which were then cut and framed into rectangular panels and mounted into a T-shaped beamed structure. The variegated patterns throughout the framework cast unique shadows on the sidewalk and windows, while diffusing the strong Arizona sunlight. Perforated metal is often chosen for sunshades as it decreases the uplift issues of a solid material, giving the walkway structure stability.

The aesthetically pleasing sunshade complemented the city hall facade, also made of perforated called "Turbulent Shade", (inset). Designed to move in desert wind gusts, this building art was created of 6 by 12-inch stainless steel panels and the brainchild of Ned Kahn, a California artist known for replicating the forms and forces of nature.

Each facade perforated metal panel was mounted to bars by two cylinder arms that float and glide in a grommet ring. A sunshade for the offices by day, the facade panels are backlit by low energy LED lights that create a moving canvas at night.



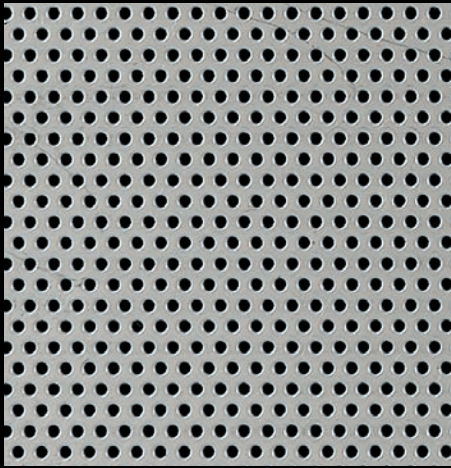
© Bill Timmerman



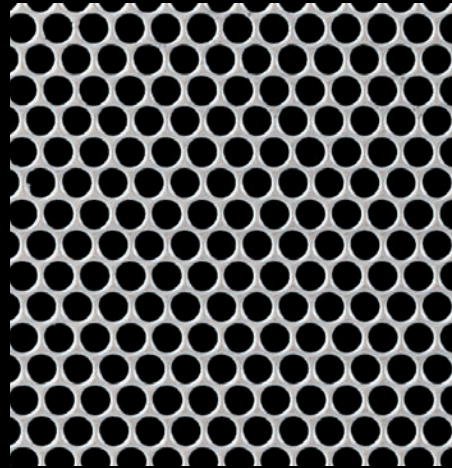
Scan with your smartphone to see video of the moving, LED lit perforated panels.

McNICHOLS® Perforated Metal panels provide beautiful aesthetics and functionality while helping blend art, science, motion and metal.

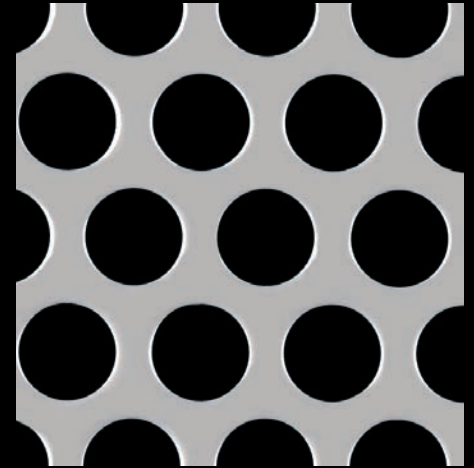




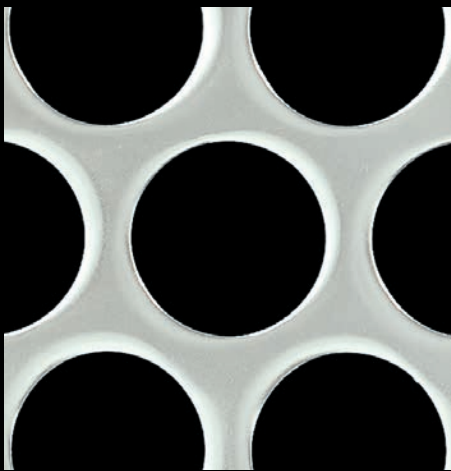
1/16" Round on 1/8" Staggered Centers
23% Open Area



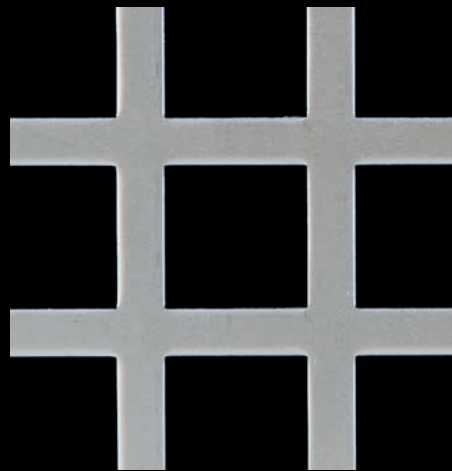
5/32" Round on 3/16" Staggered Centers
63% Open Area



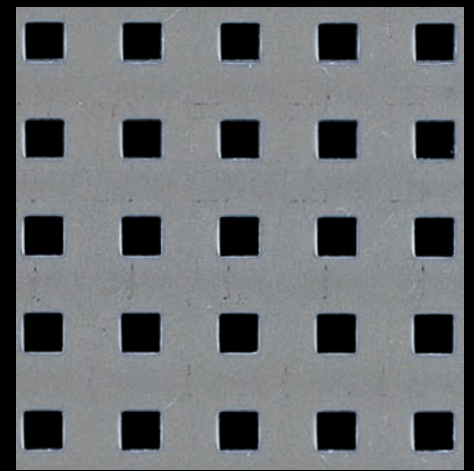
1/2" Round on 11/16" Staggered Centers
48% Open Area



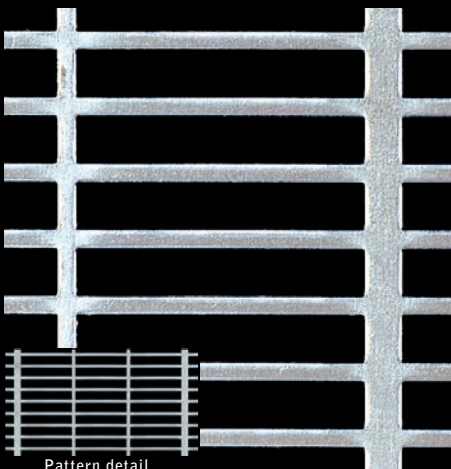
1" Round on 1-1/4" Staggered Centers
58% Open Area



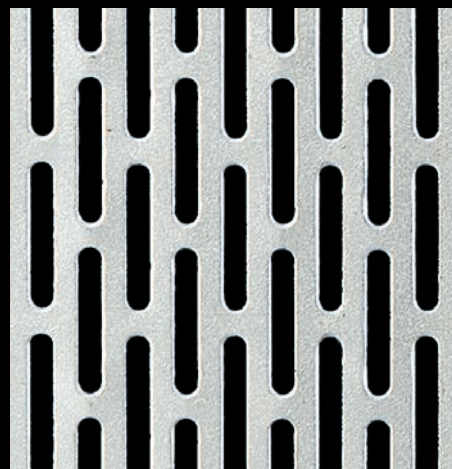
3/4" Square on 1" Straight Centers
56% Open Area



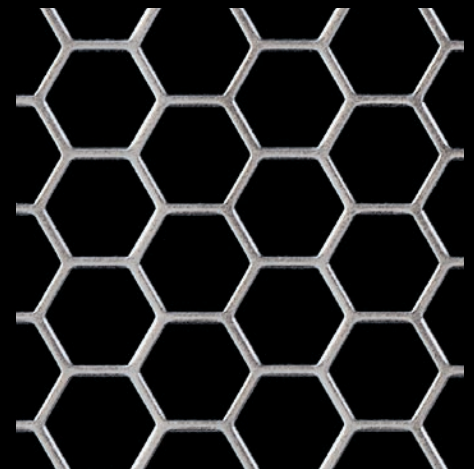
.200" Square on 1/2" Straight Centers
16% Open Area



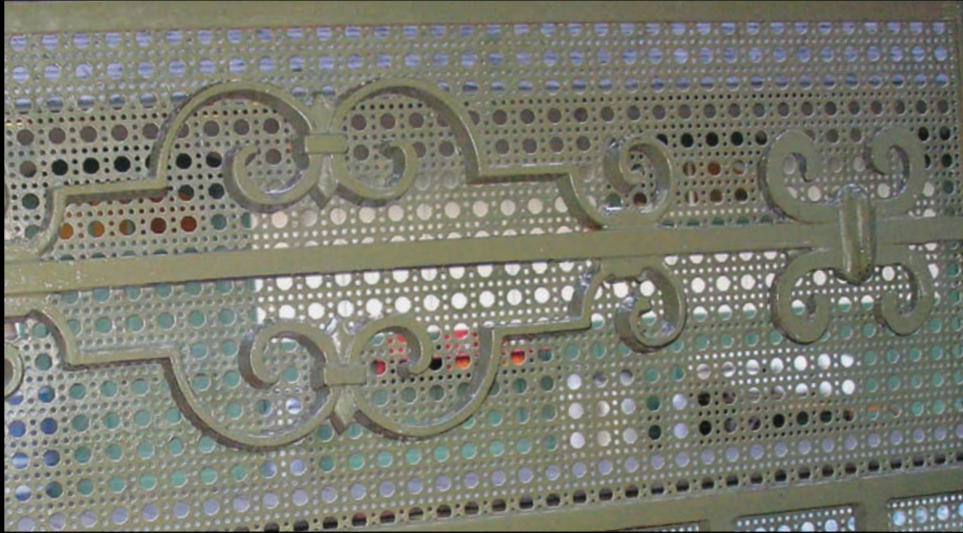
Pattern detail
Airline - 1/4" x 1-1/2" Rectangular Slots
68% Open Area



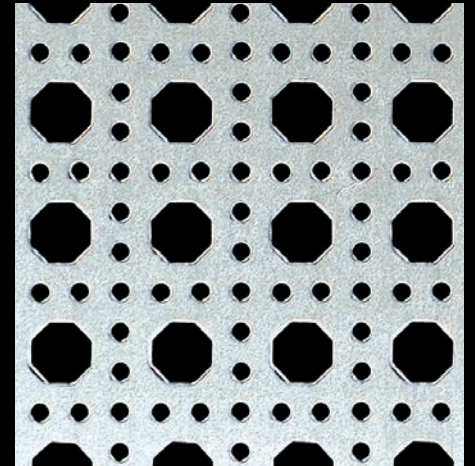
Moire - 1/8" x 3/4" Round End Slot
41% Open Area



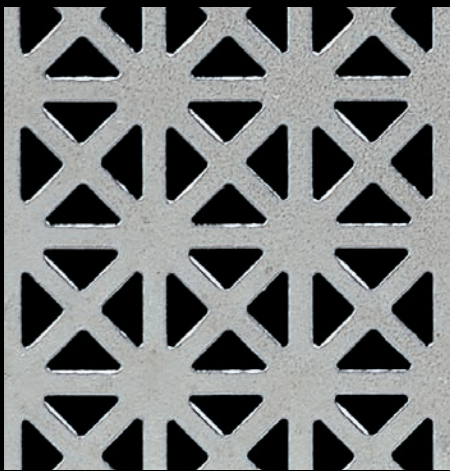
1/2" Hexagon - 9/16" Centers
80% Open Area



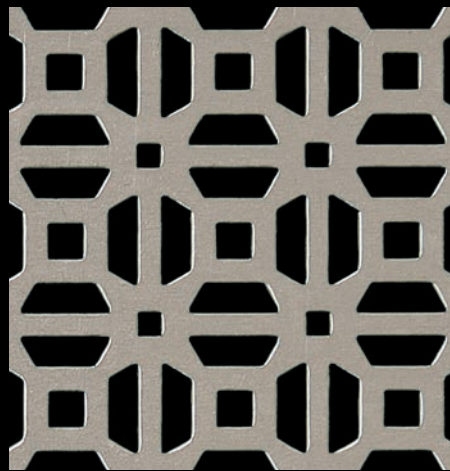
McNICHOLS® Octagon Cane Perforated Metal was selected as infill panels for this decorative fence.



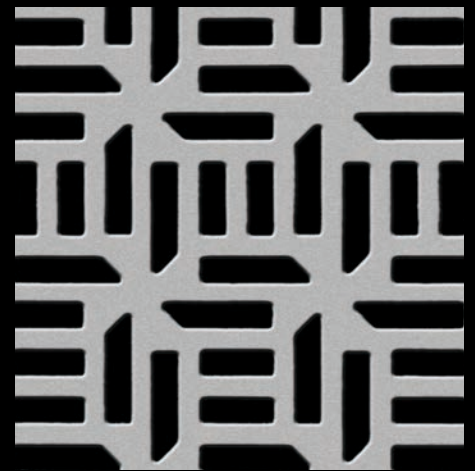
Octagon Cane
36% Open Area



Grecian
35% Open Area



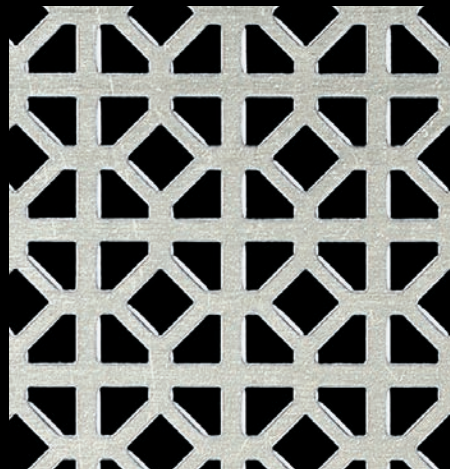
Mosaic 3310
40% Open Area



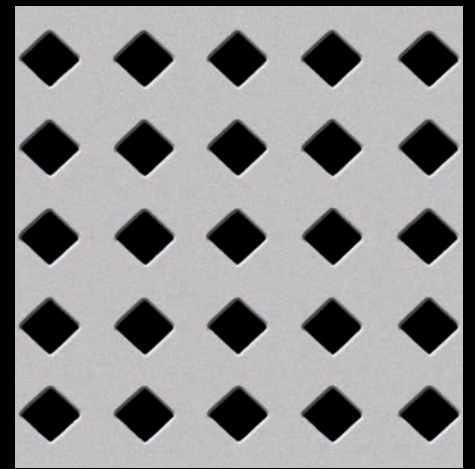
Gateway 3314
38% Open Area



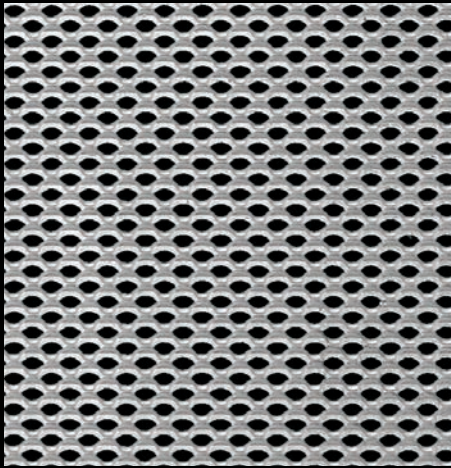
Full Cloverleaf - 1/2" Staggered Clovers
51% Open Area



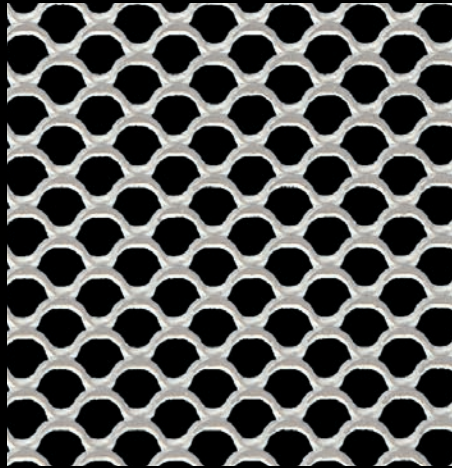
Windsor
45% Open Area



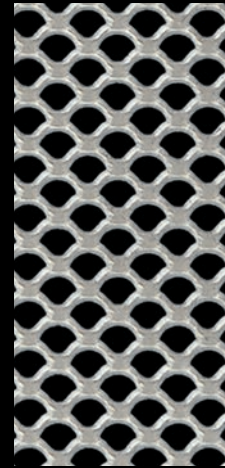
Linco 3312
19% Open Area



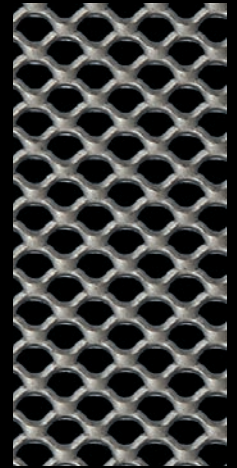
Lancet™ 166F-18 1/16" Flat Plain Steel
44% Open Area



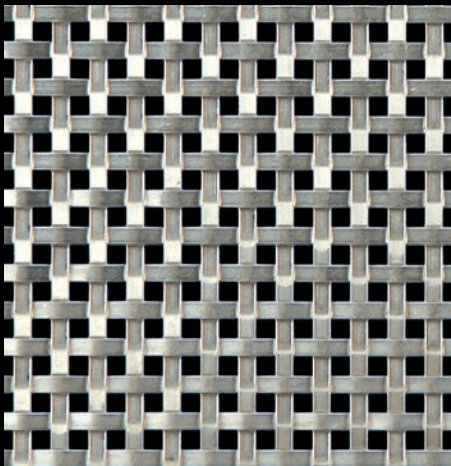
Lancet™ 366F-18 3/16" Flat Plain Steel
63% Open Area



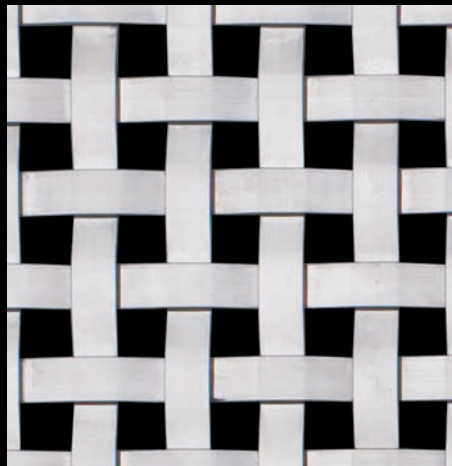
Lancet™ 186F-18 1/8" Flat Plain Steel
52% Open Area



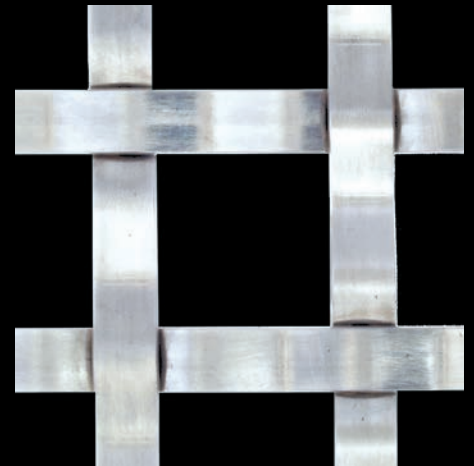
Lancet™ 186R-18 1/8" Raised Plain Steel
55% Open Area



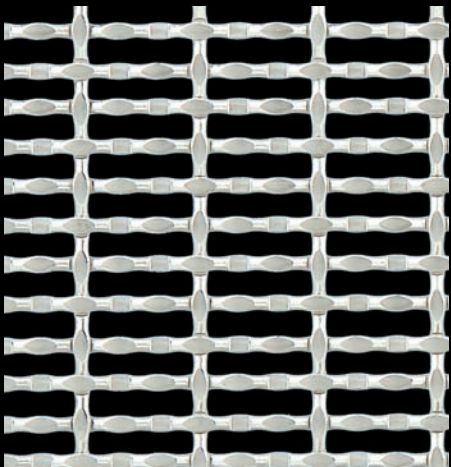
Ashland™ 2015 Stainless Steel 304 or 316
Ashland™ 8017 Bronze
27% Open Area



Ashland™ 8018 Stainless Steel 304
25% Open Area



Ashland™ 8015 Stainless Steel 304
51.1% Open Area



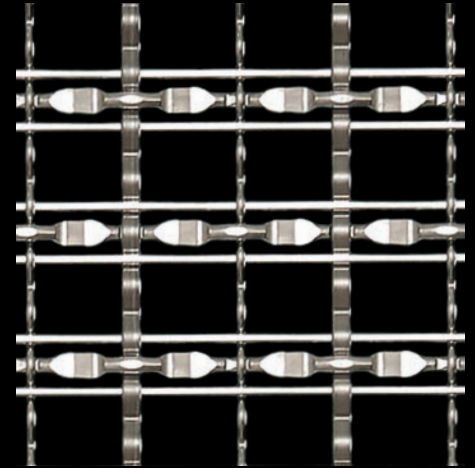
Chateau™ 3115 Stainless Steel 316
56% Open Area



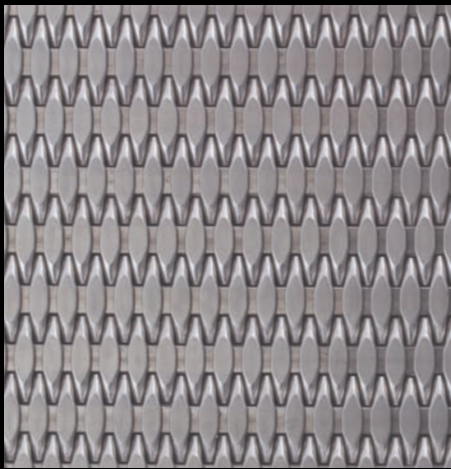
To add ambience while diffusing the restaurant lighting, **McNICHOLS** Chateau™ 3115 was chosen as wall cladding.



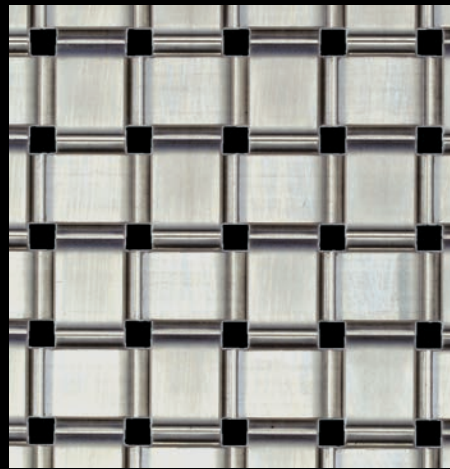
McNICHOLS Techna™ 3156 in 316 Stainless Steel was specified for infill panels of the balconies of this Providence, RI housing.



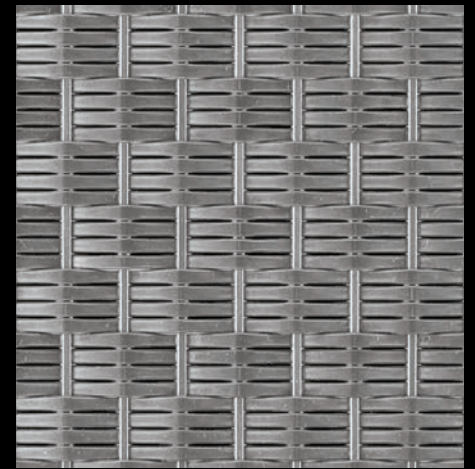
Techna™ 3156 Stainless Steel 304, 316
61.2% Open Area



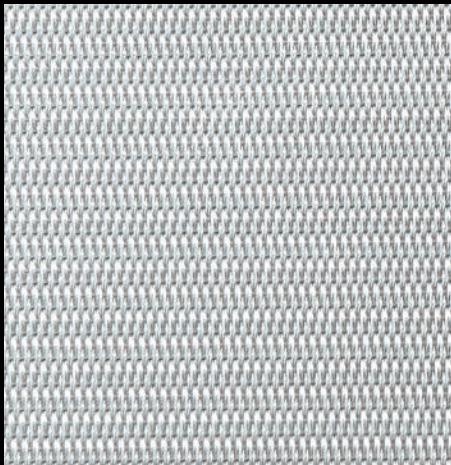
Shire™ 2132 Stainless Steel 304
0% Open Area



Ashland™ 8016 Stainless Steel 304
6.6% Open Area



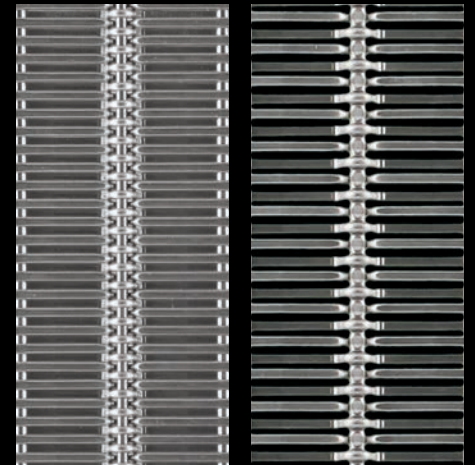
Shire™ 2136 Stainless Steel 304
0% Open Area



Sienna™ 9246 Stainless Steel 316
0% Open Area



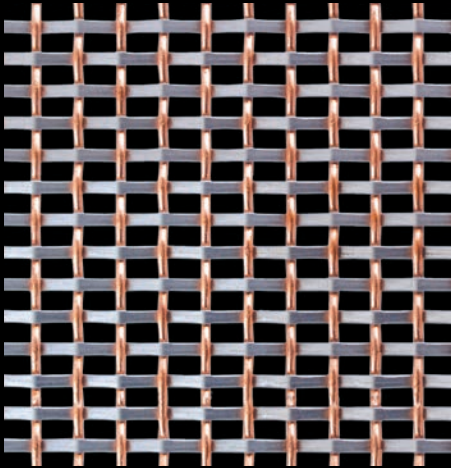
Shire™ 2130 Stainless Steel 316
0% Open Area



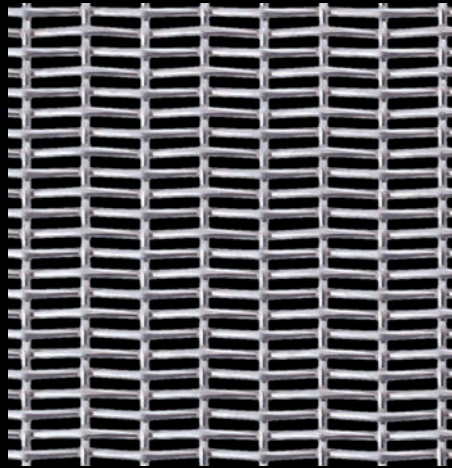
Shire™ 2131 Stainless Steel 304
0% Open Area

Shire™ 2141 Stainless Steel 304
32.5% Open Area

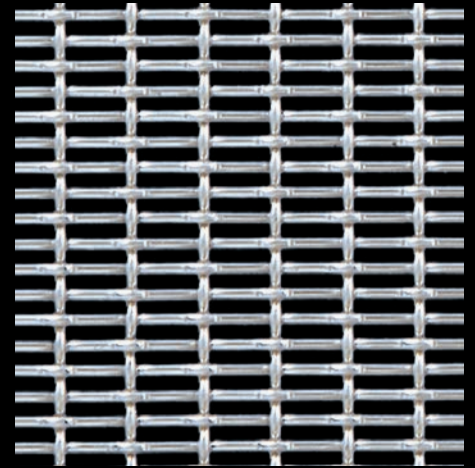
DIVERSITY OF PATTERNS



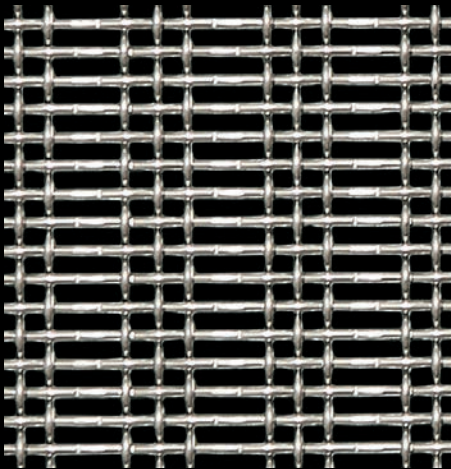
Shire™ 8148 Stainless Steel 304/Copper
41.1% Open Area



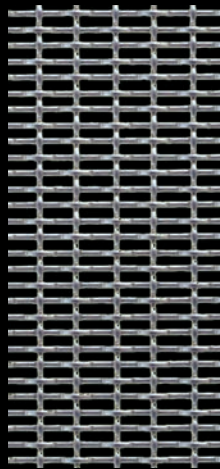
Shire™ 8141 Stainless Steel 304
38% Open Area



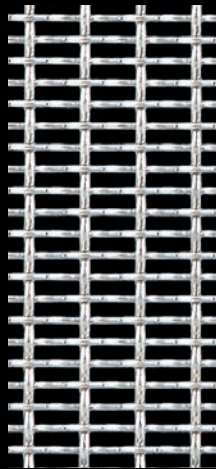
Shire™ 2105 Stainless Steel 304 or 316
44% Open Area



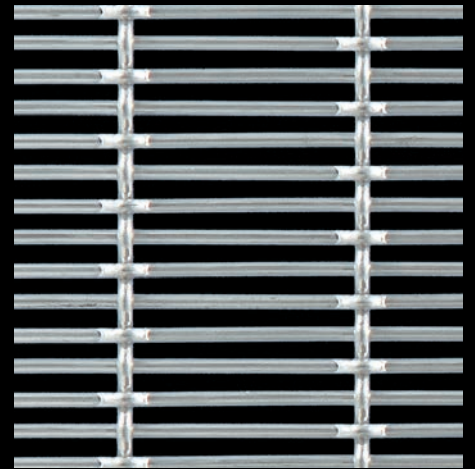
Shire™ 8314 Stainless Steel 304
43.5% Open Area



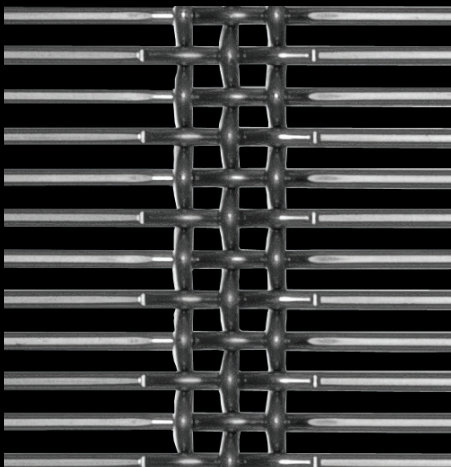
Shire™ 8140
Stainless Steel 304
39.9% Open Area



Shire™ 3001
Stainless Steel 316
56% Open Area



Shire™ 4391 Stainless Steel 316
52% Open Area



Aura™ 8857 Stainless Steel 304
48% Open Area



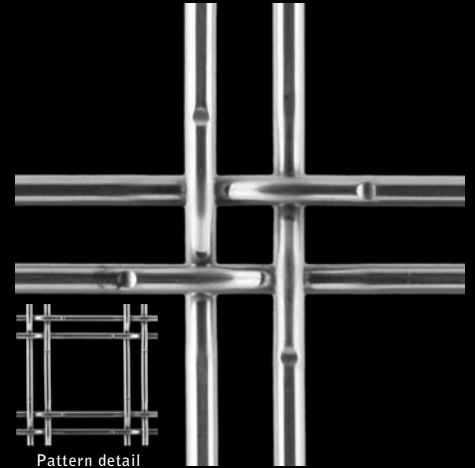
McNICHOLS Aura™ 8857 Stainless Steel 304 was used to transform this airport information desk into a striking reception desk.



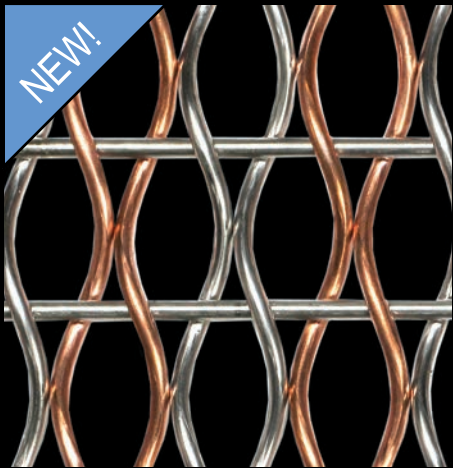
NEW!
Halo™ 1162 Stainless Steel
62.4% Open Area



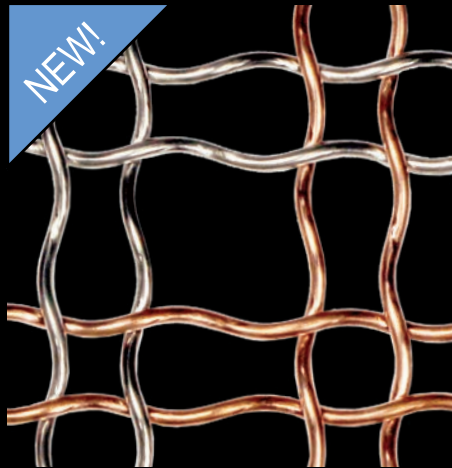
NEW!
Halo™ 2252 Stainless Steel
52% Open Area



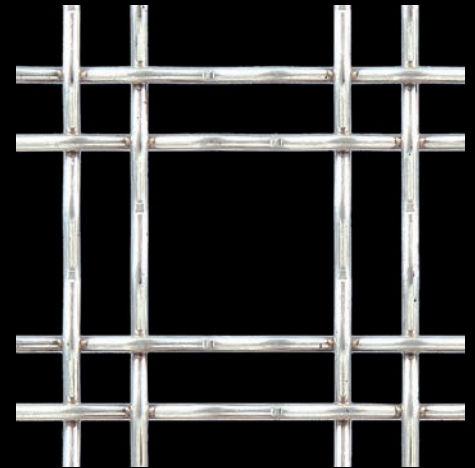
Pattern detail
Techna™ 3155 Stainless Steel 304, 316
75% Open Area



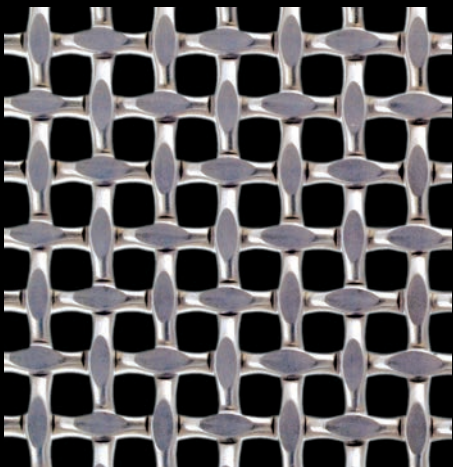
NEW!
Halo™ 2156
Stainless Steel/Copper-based Alloy
56.7% Open Area



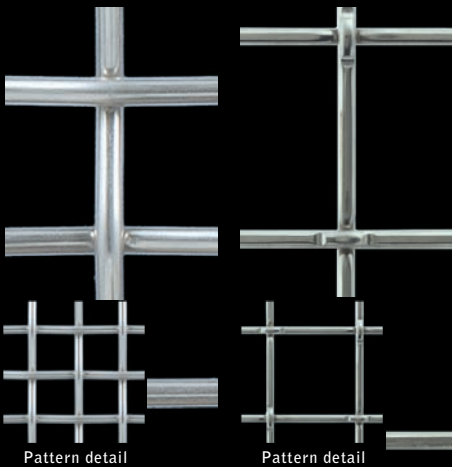
NEW!
Halo™ 4474
Stainless Steel/Copper-based Alloy
74% Open Area



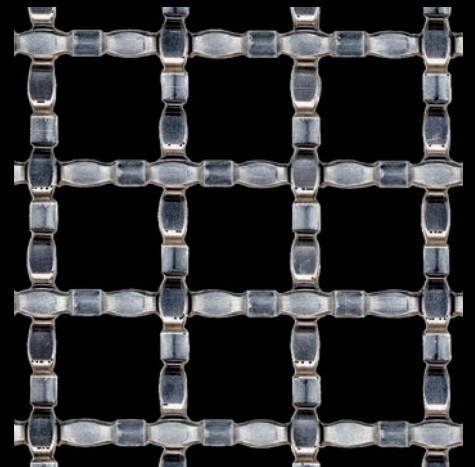
Techna™ 3150 Stainless Steel 304, 316
Aluminum
74% Open Area



Techna™ 8163 Stainless Steel 304
36.9% Open Area



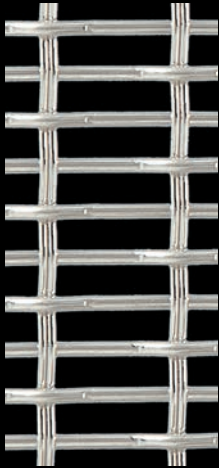
Pattern detail
Techna™ 3100 Stainless Steel 316
65% Open Area
Pattern detail
Techna™ 8160 Stainless Steel 304
Aluminum
81.7% Open Area



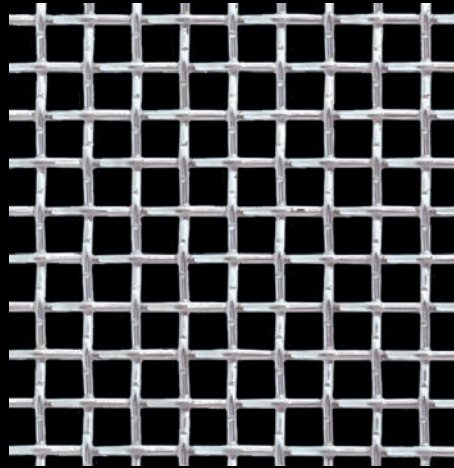
Techna™ 8159 Stainless Steel 304
63.4% Open Area



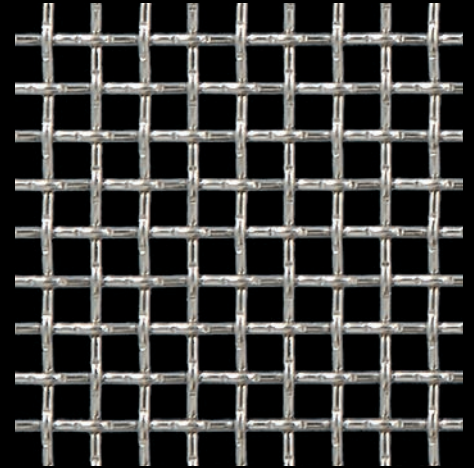
Shire™ 4223
Stainless Steel 316
43% Open Area



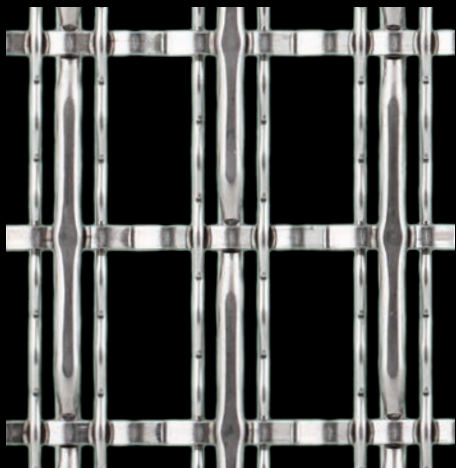
Shire™ 4243
Stainless Steel 316
57% Open Area



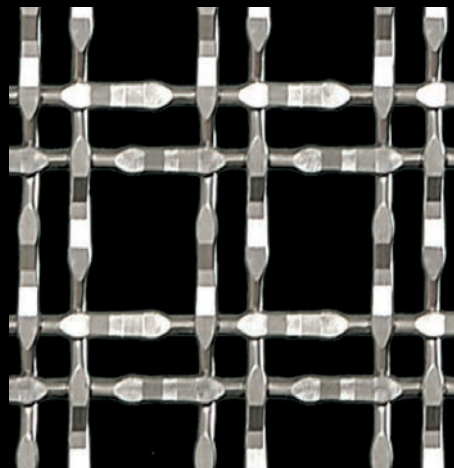
Talica™ 8221
Stainless Steel 304
55.9% Open Area



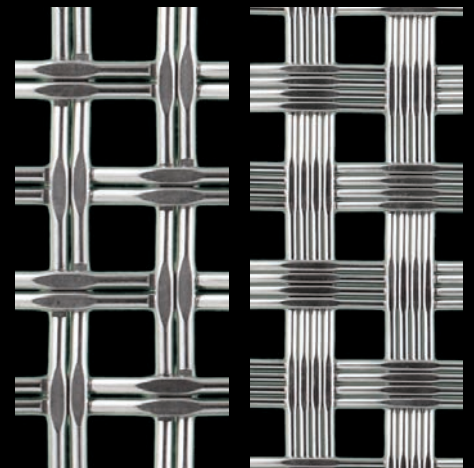
Talica™ 2120
Stainless Steel 304, 316
56% Open Area



Techna™ 3162
Stainless Steel, Bronze
60.2% Open Area

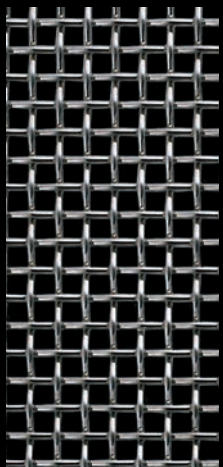


Talica™ 8146
Stainless Steel 304
61% Open Area



Talica™ 8150
Stainless Steel 304
46.3% Open Area

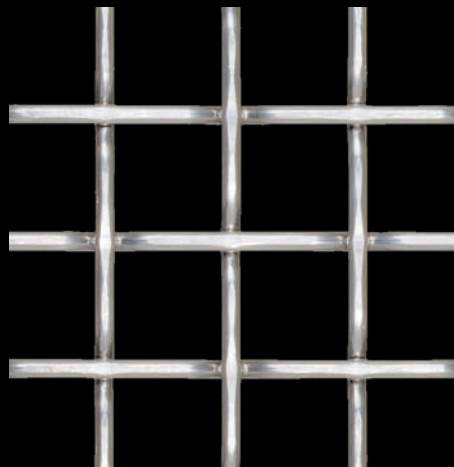
Talica™ 8158
Stainless Steel 304
34% Open Area



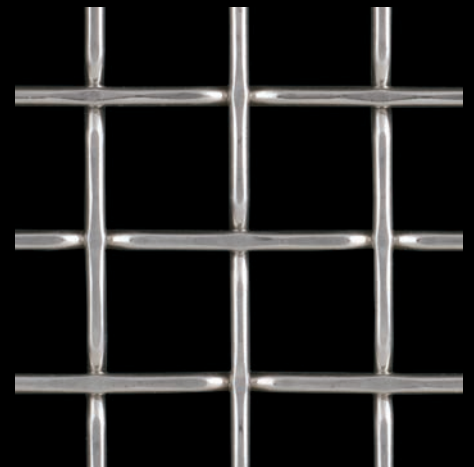
Talica™ 8220
Stainless Steel 304
45% Open Area



Talica™ 2100
Stainless Steel 316
64% Open Area



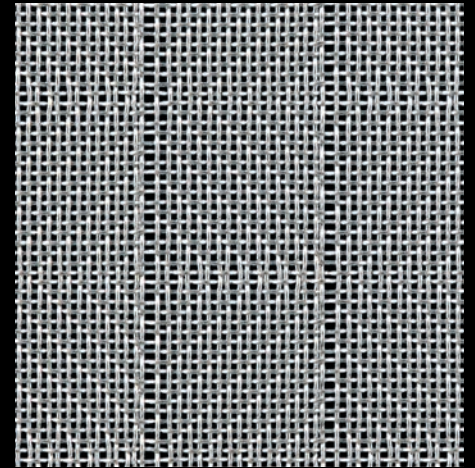
Techna™ 8165
Stainless Steel 304, 316
70.2% Open Area



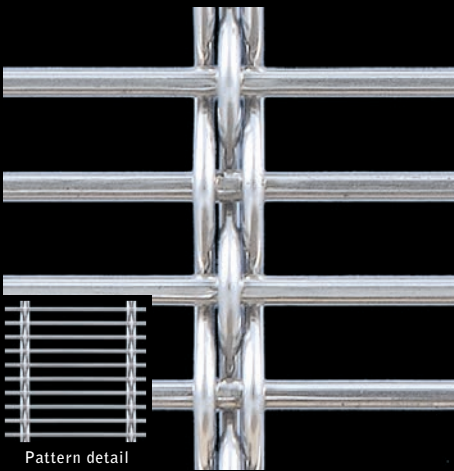
Techna™ 8168
Stainless Steel 304, Bronze
74% Open Area



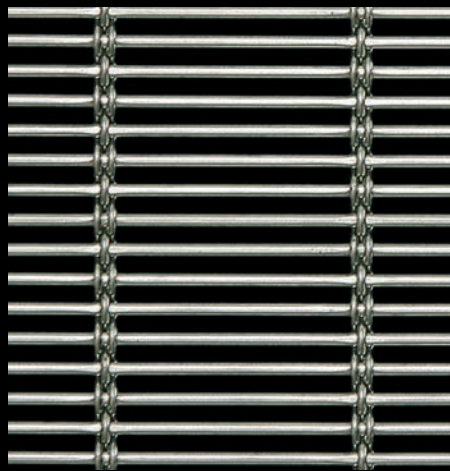
McNICHOLS Plaid™ 6013 Wire Mesh was selected as an infill panel for this elegant stairway.



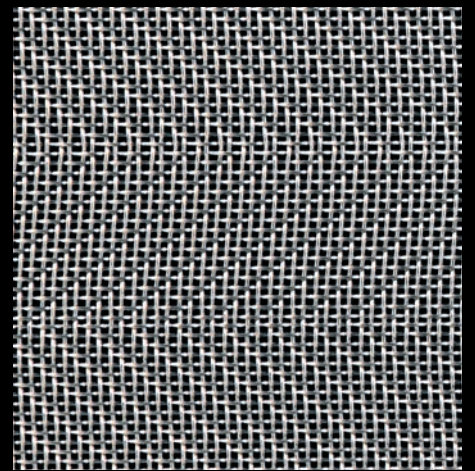
Plaid™ 6013 Stainless Steel 316
31% Open Area



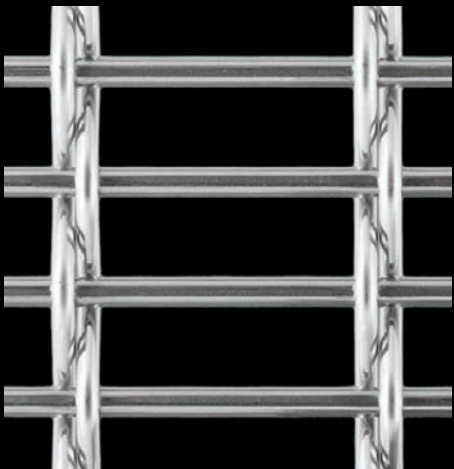
Pattern detail
Aura™ 8150 Stainless Steel 316
65% Open Area



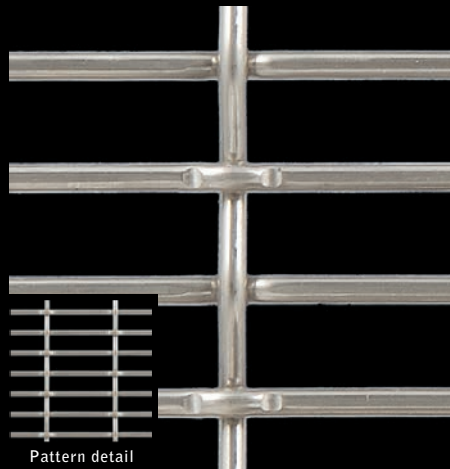
Aura™ 8858 Stainless Steel 304
51% Open Area



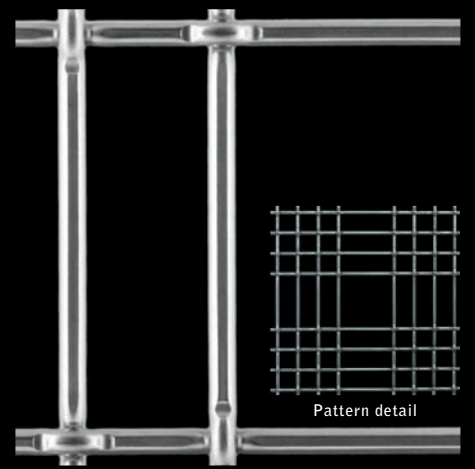
Prism™ 6012 Stainless Steel 316
34% Open Area



Aura™ 8810 Stainless Steel 304
61.7% Open Area

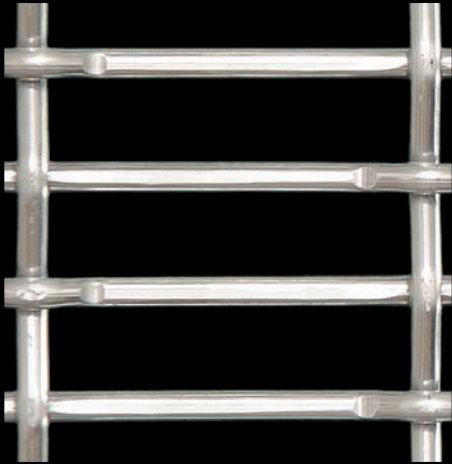


Pattern detail
Chateau™ 3110 Stainless Steel 316
67% Open Area

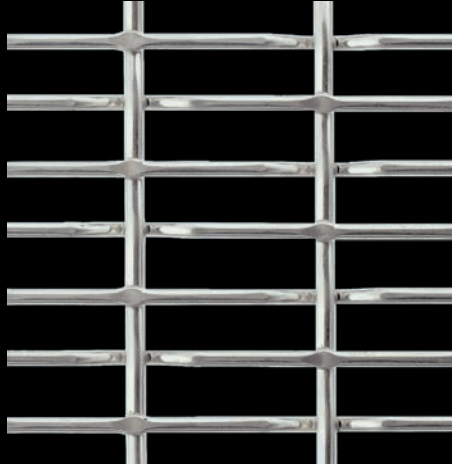


Techna™ 8164 Stainless Steel 304
77.4% Open Area

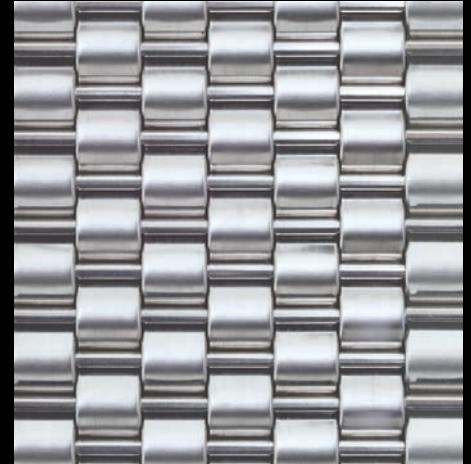
THE BEAUTY BEHIND HOLE METAL



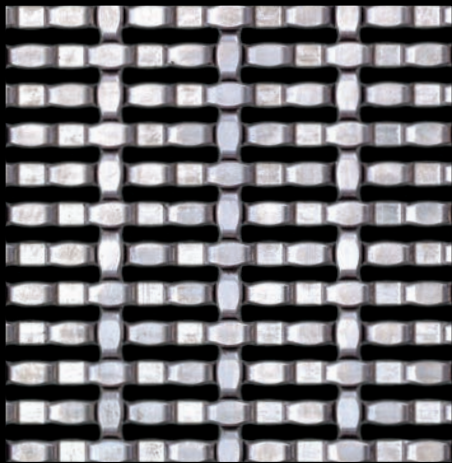
Chateau™ 3120 Stainless Steel 304
66.5 % Open Area



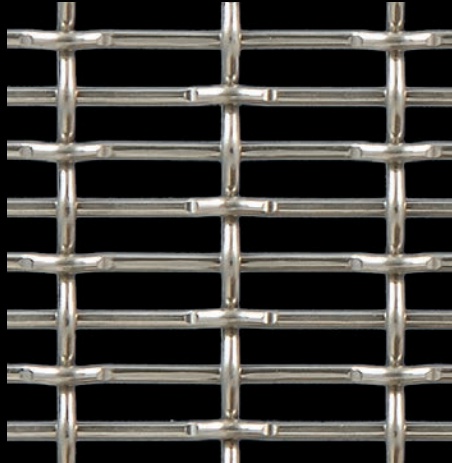
Chateau™ 8860 Stainless Steel 304
64% Open Area



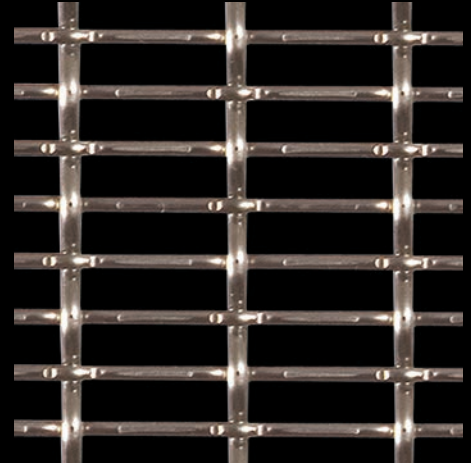
Shire™ 2134 Stainless Steel 304
0% Open Area



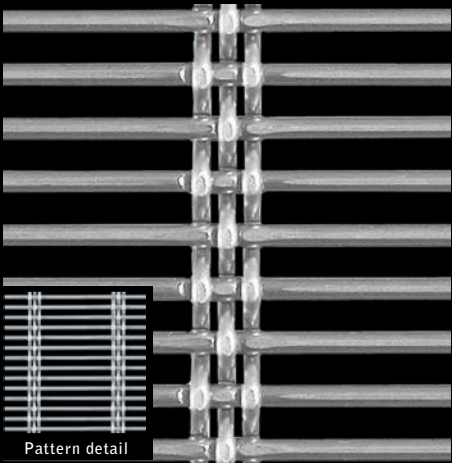
Chateau™ 8861 Stainless Steel 304
27.3% Open Area



Chateau™ 3105 Stainless Steel 304, 316
58% Open Area



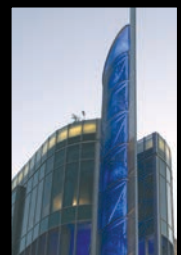
Chateau™ 3125 Stainless Steel 304
58.5% Open Area



Aura™ 8856 Stainless Steel 304
42.3% Open Area



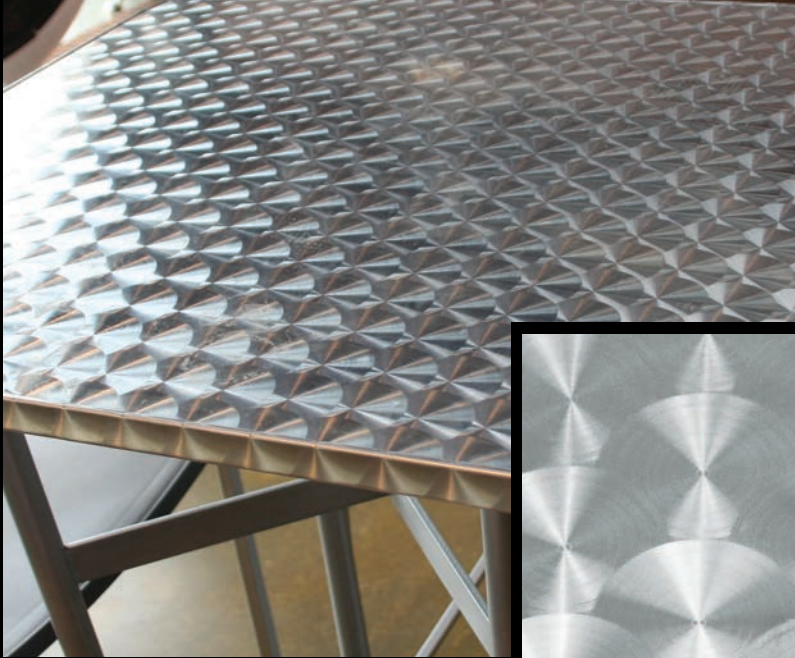
McNICHOLS Designer Metal Aura™ 8856 was used for the beacon tower at the entrance of this entertainment complex.



LED lights change color of column.

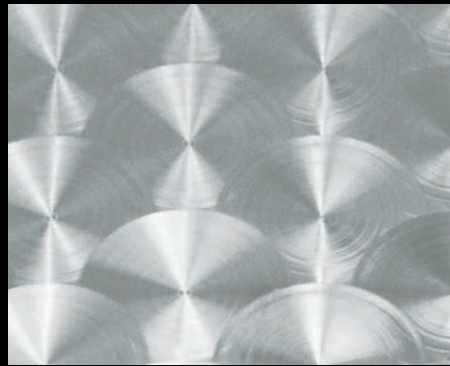
© Bob Braun Photography

McNICHOLS[®] TEXTURED METALS



McNICHOLS[®] Engine Turn pattern adds high tech look to this table surface and also helps hide fingerprints and smudges.

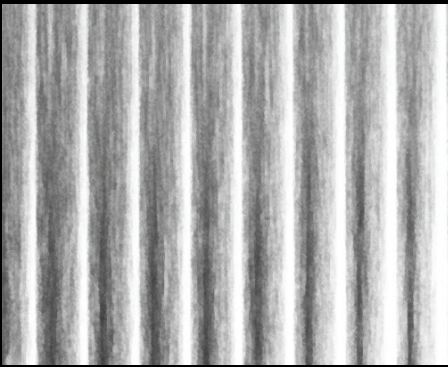
Add the elements of texture, dimension, and shine to your next project with McNICHOLS[®] Textured Metals. We offer a variety of textured pattern choices, all available in full sheets or cut to your exact specifications.



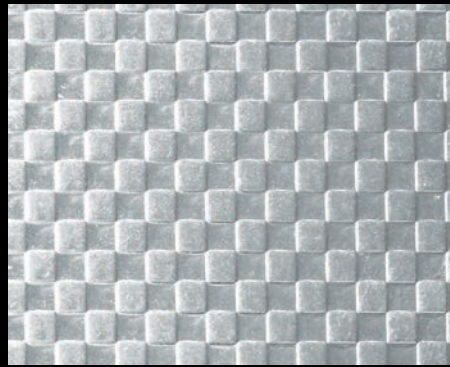
Engine Turn Stainless Steel Type 304
Designer Textured Metals



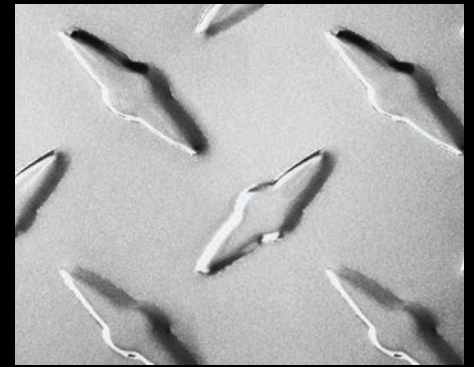
Leather Grain Stainless Steel Type 304
Designer Textured Metals



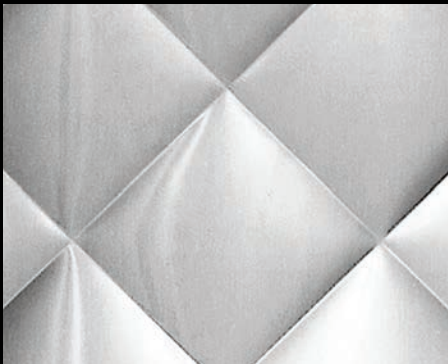
Cambridge Stainless Steel Type 304
Designer Textured Metals



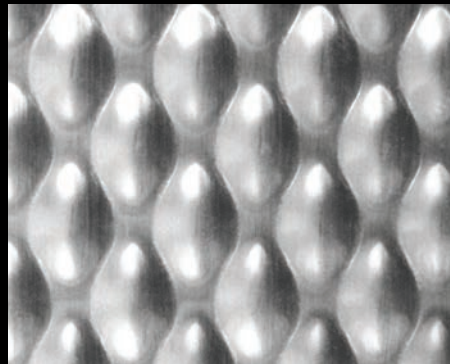
Squares Stainless Steel Type 304
Designer Textured Metals



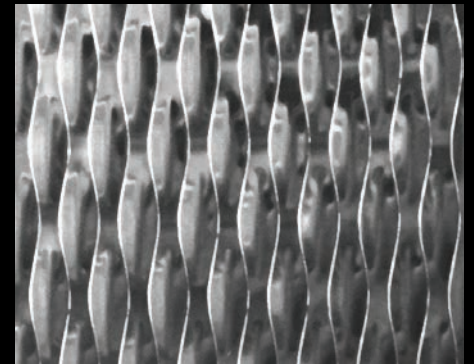
TreadTex[®] Aluminum or Pre-Galvanized
Designer Textured Metals



3" Diamond Quilt Stainless Steel Type 304
Designer Textured Metals



6-0M Stainless Steel Type 304
Designer Textured Metals

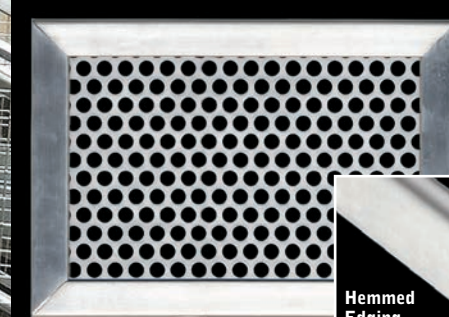


5-SM Stainless Steel Type 304
Designer Textured Metals

McNICHOLS[®] QUALITY EDGINGS



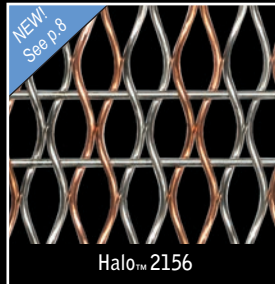
McNICHOLS[®] Quality Edgings offer solutions for both industrial and architectural projects. We are able to provide hemmed edging, u-edging, bar and angle in a variety of metal choices.



Scan this code to learn more about our Hemmed and other edging alternatives.

New Designer Metals For Aesthetics and Functionality

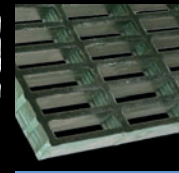
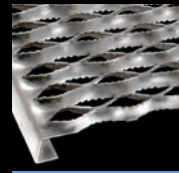
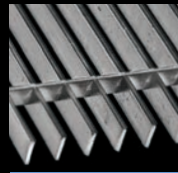
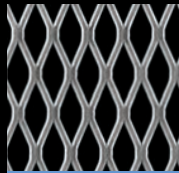
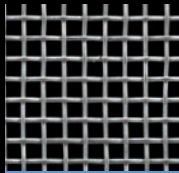
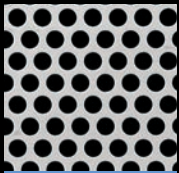
Architects, contractors and designers choose to incorporate **McNICHOLS**® Designer Metals into their projects because of their versatility and beauty. **McNICHOLS** has the largest selection of Designer Metals in North America that include Perforated and Expanded Metal, Wire Mesh and Textured Metals in a myriad of materials and styles.



Scan this code to see more applications of **McNICHOLS**® Designer Metals.

McNICHOLS® Hole Products Offer Innovative Solutions for Your Next Project!

Visit mcnichols.com for information on all of our Quality Hole Products.



mcnichols.com | 866.754.5144

Please note that product photographs are not actual size. Application photos reflected are typical of hole products in use that can be supplied or have been supplied by **McNICHOLS CO.**

Some illustrations may depict uses designed, manufactured, fabricated or installed by others.

McNICHOLS is ISO 9001:2008 Certified.