

INSTALLATION INSTRUCTIONS

WOOD HANDRAIL SYSTEM WHRC-625

STORAGE, HANDLING & ENVIRONMENTAL CONDITIONS:

1. All materials shipped unassembled. Store vertically or on flat horizontal surface.
2. Begin installation only after finish construction has been completed and building interior has been within temperature range intended for continued use for at least 24 hours. Cut vinyl and aluminum components to fit only after they have been at room temperature intended for continued use for 24 hours.

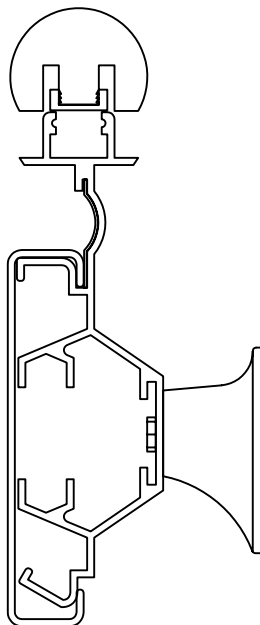
INSTALLATION:

1. Measure and mark fastener centerline on wall or partition. Locate this centerline by subtracting 4-1/8" (104.8mm) from height of top of rail on wall or partition.
2. Measure and mark aluminum retainer ends and joints between abutting retainer lengths, if any, on wall or partition (see Standard Plan Detail on reverse side).
3. Measure and mark fastener holes on wall or partition. Locate holes on fastener centerline 32" (812.8mm) O.C. max., unless otherwise specified, and at distances from retainer ends and butt joints as shown (see Standard Plan Detail on reverse side).
4. Measure and cut retainer lengths. Use longest practical lengths to minimize number of joints. Carefully cut to achieve hairline joints between abutting lengths. Verify that cut lengths conform exactly with lengths marked on wall or partition.
5. Pre-drill fastener holes in wall or partition at locations marked. Make hole diameter as small as possible, allowing for fasteners. For most drywall applications, we recommend 1/4"-20 bolts and 1/4" size BB strap-type Toggler brand toggles by Mechanical Plastics. For most masonry applications, we recommend 1/4" lag screws and Toggler brand "alligator" anchors, size A6, by Mechanical Plastics.
6. Pre-drill holes in retainer lengths to align with holes in wall or partition. Make hole diameter as small as possible, allowing for fasteners.
7. Assemble retainers. Splice abutting retainer lengths, if any, using manufacturer-provided splices and screws; abut tightly to achieve hairline joints.
8. Secure rail assemblies to wall or partition. Assemble fasteners, insert through holes in retainer and brackets and into holes in wall or partition, and secure per fastener manufacturer's printed instructions.
9. Install wood top rail. Measure lengths needed and select wood pieces to minimize waste. Cut rails to size as shown on the Standard Plan Detail. Locate rail joints so they are not directly over retainer joints to minimize alignment problem. Place plastic retainer clips in the top of the aluminum retainer, and press the wood railing into place.
10. Install accent strip. Cut strips to the same length as retainer, and slide into place.
11. Install returns and corners. Drill out the end of the wood railing with a 3/32"[2.38mm] drill to receive the spring pins on the returns. Insert spring pins on wood returns into the wood rail, and the tab on the return or corner into aluminum retainer. Clamp into place, and secure with the manufacturer provided #8x1/2" sheet metal screws or 1/8" pop rivets.
12. Install crash rail cover. Locate cover joints so they are not directly over retainer splices to minimize alignment problems. Measure and cut cove lengths to fit tightly between return and corners. Secure the cover in place by hooking the top flange into the same groove as the accent groove and then snapping it over the retainer bottom. Make all joints neat and hairline tight.
13. Using a mild detergent, clean soiled surfaces. Do not use powdered cleaners as they may leave residue embedded in a cover surface. Touch up joints or nicks in the wood with the touch up pen provided.



PARTS LIST

WHRC-625



WHRC-625

ALUMINUM RETAINER #A054

VINYL ACRYLIC COVER #V101-X

WOOD RAIL #W109-X

ACCENT STRIP #V114-X

MOUNTING BRACKET #M290-X

VINYL RETAINER CLIP #V119

L.H. END RETURN #HRC-625 CLR

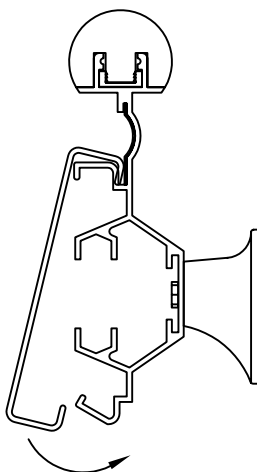
R.H. END RETURN #HRC-625 CRR

OUTSIDE CORNER #HRC-625 COS

ACCENT CORNER #M214-X

WOOD END RETURN #W205-X

1/8" x 1-1/4" PINS.

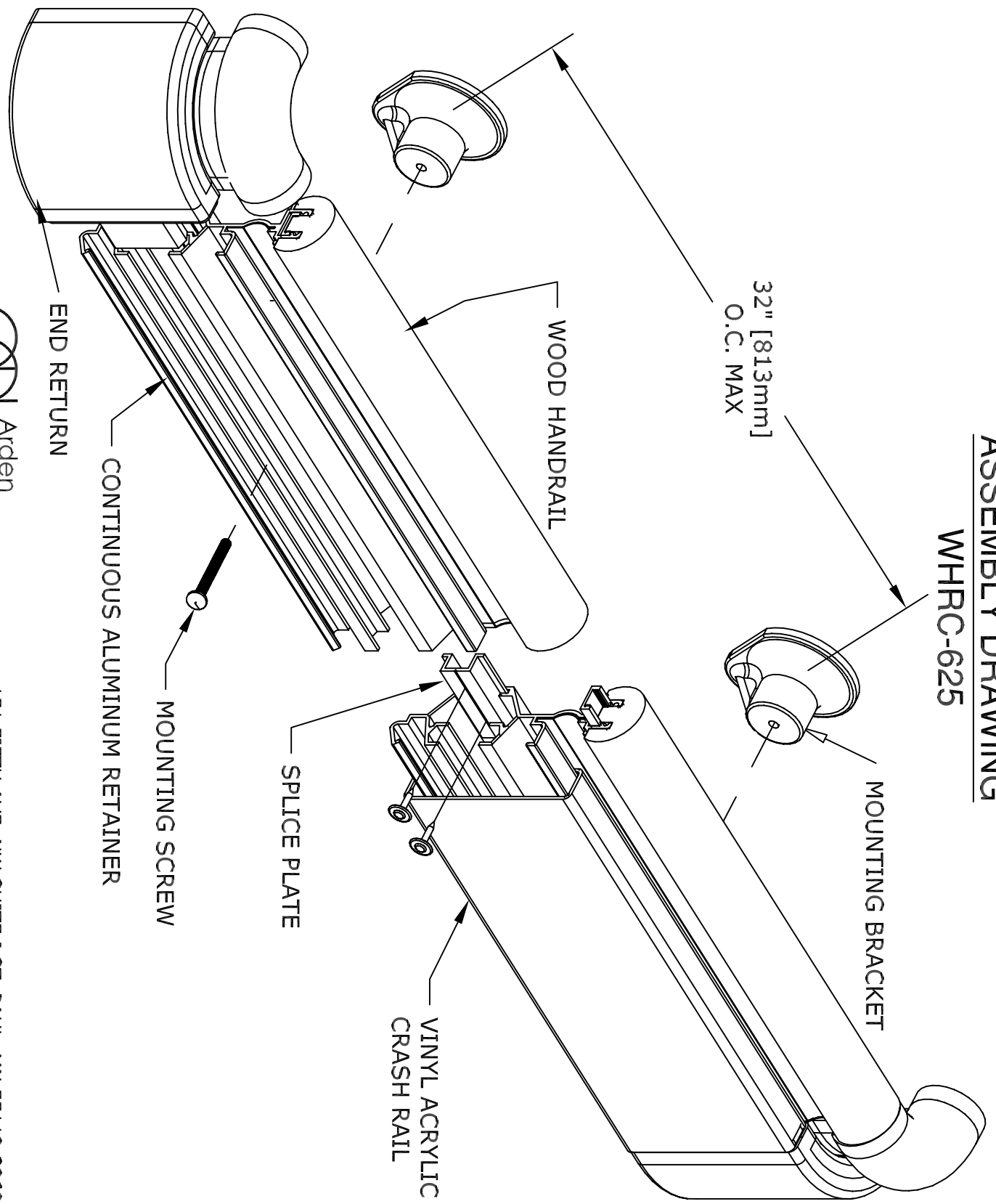


COVER INSTALLATION

1. HOOK OVER TOP OF RETAINER.
2. ROTATE DOWNWARD, PUSHING FIRMLY TO SNAP OVER RETAINER BOTTOM.

ASSEMBLY DRAWING

WHRC-625



32" [813mm]
O.C. MAX

WOOD HANDRAIL

MOUNTING BRACKET

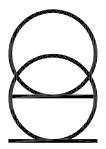
VINYL ACRYLIC
CRASH RAIL

SPLICE PLATE

MOUNTING SCREW

CONTINUOUS ALUMINUM RETAINER

END RETURN

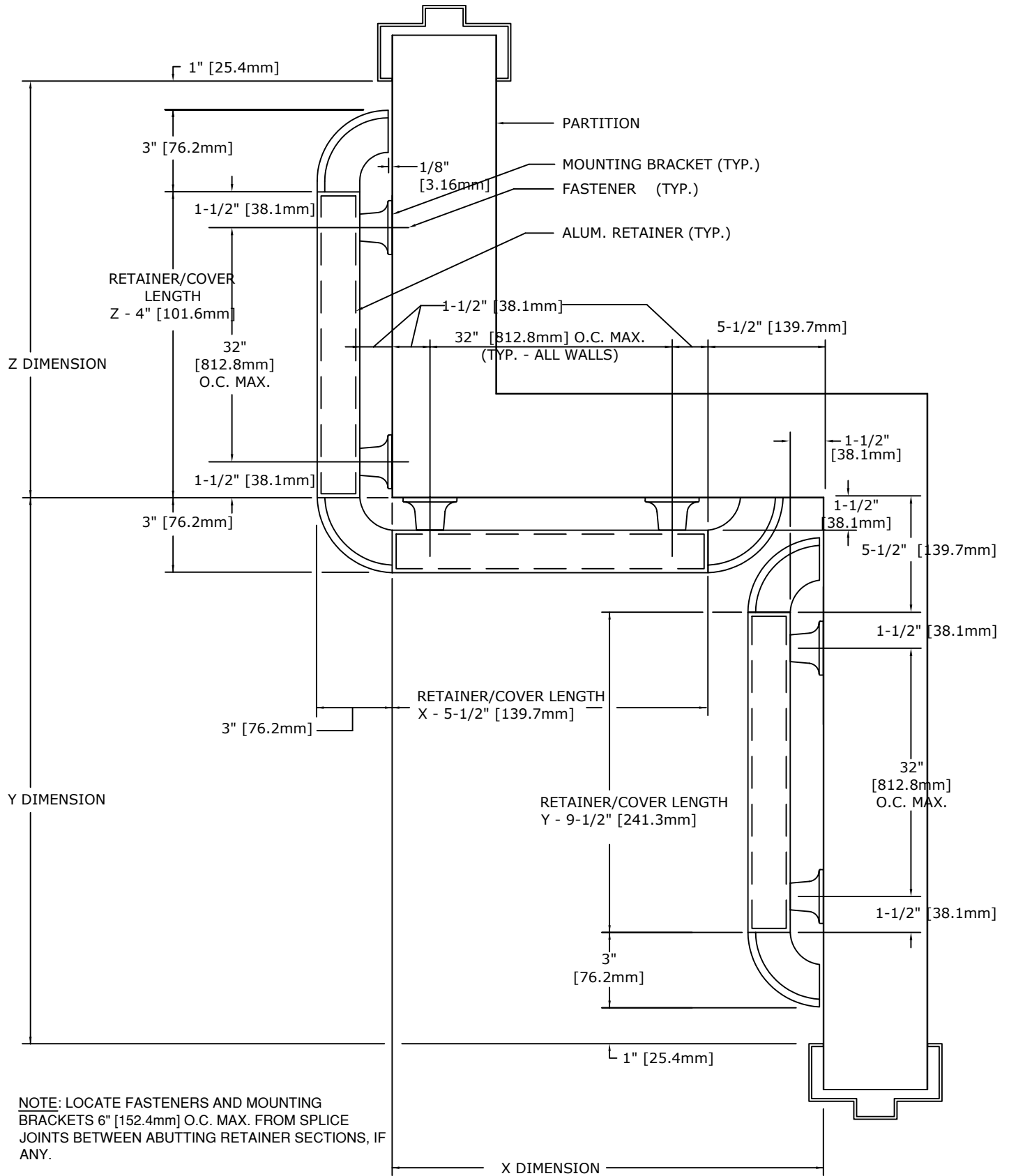


Arden
Architectural
Specialties, Inc.™

151 FIFTH AVE. NW SUITE J ST. PAUL, MN 55112-3268
TOLL-FREE 800.521.1826 TEL 651.631.1607 FAX 651.631.0251

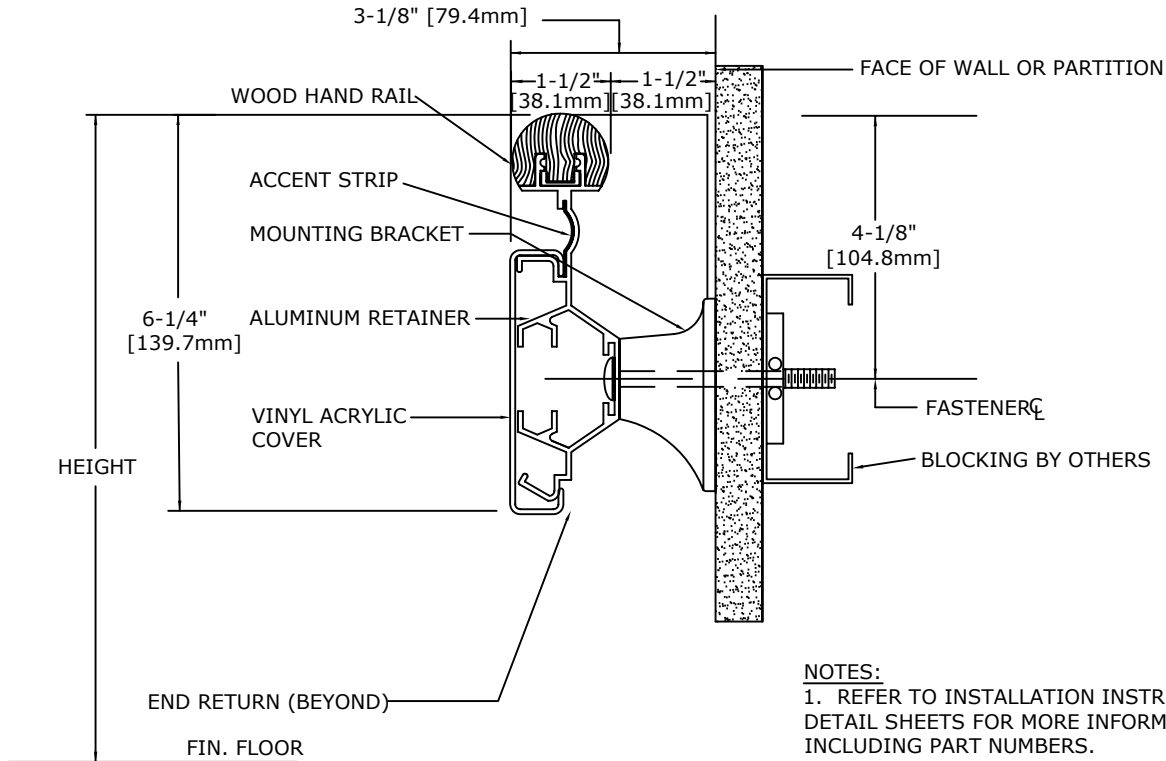
STANDARD PLAN DETAIL

WHRC-625



NOTE: LOCATE FASTENERS AND MOUNTING BRACKETS 6" [152.4mm] O.C. MAX. FROM SPLICE JOINTS BETWEEN ABUTTING RETAINER SECTIONS, IF ANY.

FASTENER HEIGHTS WHRC-625



NOTES:

1. REFER TO INSTALLATION INSTRUCTIONS AND DETAIL SHEETS FOR MORE INFORMATION, INCLUDING PART NUMBERS.
2. ON WALL OR PARTITION, MARK HEIGHT OF TOP OF RAIL (FROM FINISH FLOOR), THEN SUBTRACT DISTANCE FROM TOP OF RAIL TO FASTENER CENTERLINE.

IMPORTANT: USER SHALL VERIFY CONFORMANCE OF ALL CONSTRUCTIONS SHOWN WITH LOCAL CODES AND WITH REQUIREMENTS OF METAL STUD MANUFACTURER FOR RATINGS. FASTENERS AND PARTITION COMPONENTS NOT BY ARDEN ARCHITECTURAL SPECIALTIES, INC.

TYPICAL FASTENING CONDITIONS SHOWN BELOW

1 LAYER GYP. BD.	2 LAYERS GYP. BD.	MASONRY	GYP. BD. & MASONRY
<p>1/4"-20 X 2-3/4" BOLT AND TYPE BB TOGGLER BY MECHANICAL PLASTICS</p>	<p>1/4"-20 X 3-1/2" BOLT AND TYPE BB TOGGLER BY MECHANICAL PLASTICS</p>	<p>1/4" X 3" LAG SCREW AND TYPE AF6 ALLIGATOR ANCHORS BY MECHANICAL PLASTICS</p>	<p>1/4" X 3-1/2" LAG SCREW AND TYPE AF6 ALLIGATOR ANCHORS BY MECHANICAL PLASTICS</p>

SPECIFICATION:

GENERAL: FURNISH AND INSTALL HANDRAIL SYSTEM(S) BY ARDEN ARCHITECTURAL SPECIALTIES, INC., AS SHOWN AND SPECIFIED.

INSTALLATION:

SECURE TO WALL OR PARTITION IN ACCORDANCE WITH MANUFACTURER'S PRINTED INSTRUCTIONS. USE FASTENERS DESIGNED AND APPROVED FOR PURPOSE INTENDED, SPACED 32 INCHES (812.8mm) O.C. MAX, UNLESS SPECIFIED OTHERWISE. INSTALL SYSTEM IN ACCORDANCE WITH ALL CODES HAVING JURISDICTION.



151 FIFTH AVE. NW SUITE J ST. PAUL, MN 55112-3268
 TOLL-FREE 800.521.1826 TEL 651.631.1607 FAX 651.631.0251