

# INSTALLATION INSTRUCTIONS

## WOOD CRASH RAIL SYSTEMS WCRB-4, WCRB-6

### STORAGE, HANDLING & ENVIRONMENTAL CONDITIONS:

1. All materials shipped unassembled. Store vertically or on a flat horizontal surface.
2. Begin installation only after finish construction has been completed and building interior has been within temperature range intended for continued use for at least 24 hours. Cut vinyl and aluminum components to fit only after they have been at temperature intended for continued use for 24 hours.

### INSTALLATION

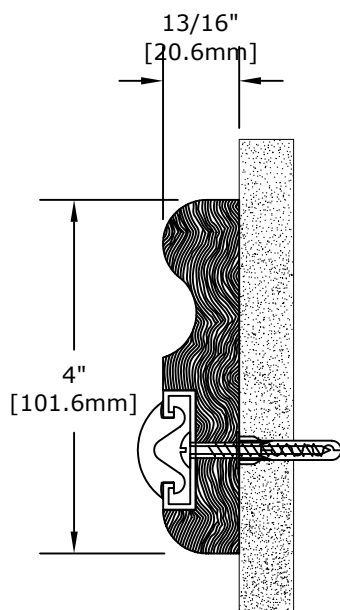
1. Measure and mark centerline of crash rail on wall or partition. Locate this centerline by subtracting 2-7/8" [73mm] from the desired finished height of the crashrail.
2. Measure and mark crash rail section and points on wall or partition (See standard plan detail).
3. Measure and mark fastener holes. Locate holes on fastener centerline 32"[812.8mm] O.C. maximum, unless otherwise specified, and at distances from ends of sections as shown on standard plan detail.
4. Measure and plan crash rail lengths. Since crash rail is furnished in random lengths, it is important to plan carefully to obtain maximum yield. Where splices are necessary, for maximum strength and appearance we recommend mitering both pieces to be joined at 45°. Glue and connect splice as shown on the assembly detail. allow extra stock on crash rail sections requiring these miter joints.
5. Glue end plugs at both ends of each crash rail section.
6. Install aluminum bumper retainer. Cut retainer 2"[50.8mm] shorter than crash rail lengths. Locate joints so they do not align with splices in crash rail. Secure to crash rail with the #8 x 9/16" screws provided.
7. Pre-drill fastener holes in wall or partition. Make hole diameter as small as possible allowing for fasteners. For most applications, we recommend 1/4-20 round head machine screws and Toggler brand alligator anchors, size A-6, by Mechanical Plastics.
8. Pre-drill holes in crash rail sections to align with holes in wall or partition. Make hole through the aluminum bumper retainer and crash rail as small as possible allowing for fasteners.
9. Secure rail assemblies to wall or partition.
10. Install vinyl bumper. Cut bumper to length from coils provided. For corners, notch the back of the vinyl bumper to allow it to bend around the corner, or miter the vinyl bumper and glue ends with PVC cement.
11. Finish ends of crash rail with stain provided.
12. Clean soiled surfaces, and touch up any joints.



151 FIFTH AVE. NW SUITE J ST. PAUL, MN 55112-3268  
TOLL-FREE 800.521.1826 TEL 651.631.1607 FAX 651.631.0251

# PARTS LIST

## WCRB-4, WCRB-6



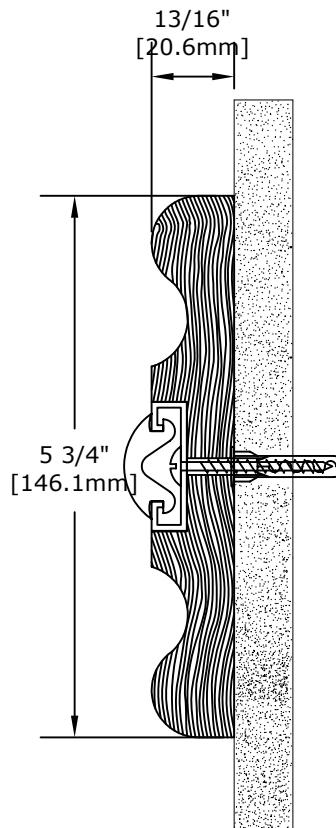
### WCRB-4

Wood Rail W104-X

End Plugs W105-X

Aluminum Bumper Retainer A050

Vinyl Bumper V115



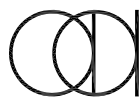
### WCRB-6

Wood Rail W104-X

End Plug W105-X

Aluminum Bumper Retainer A050

Vinyl Bumper V115

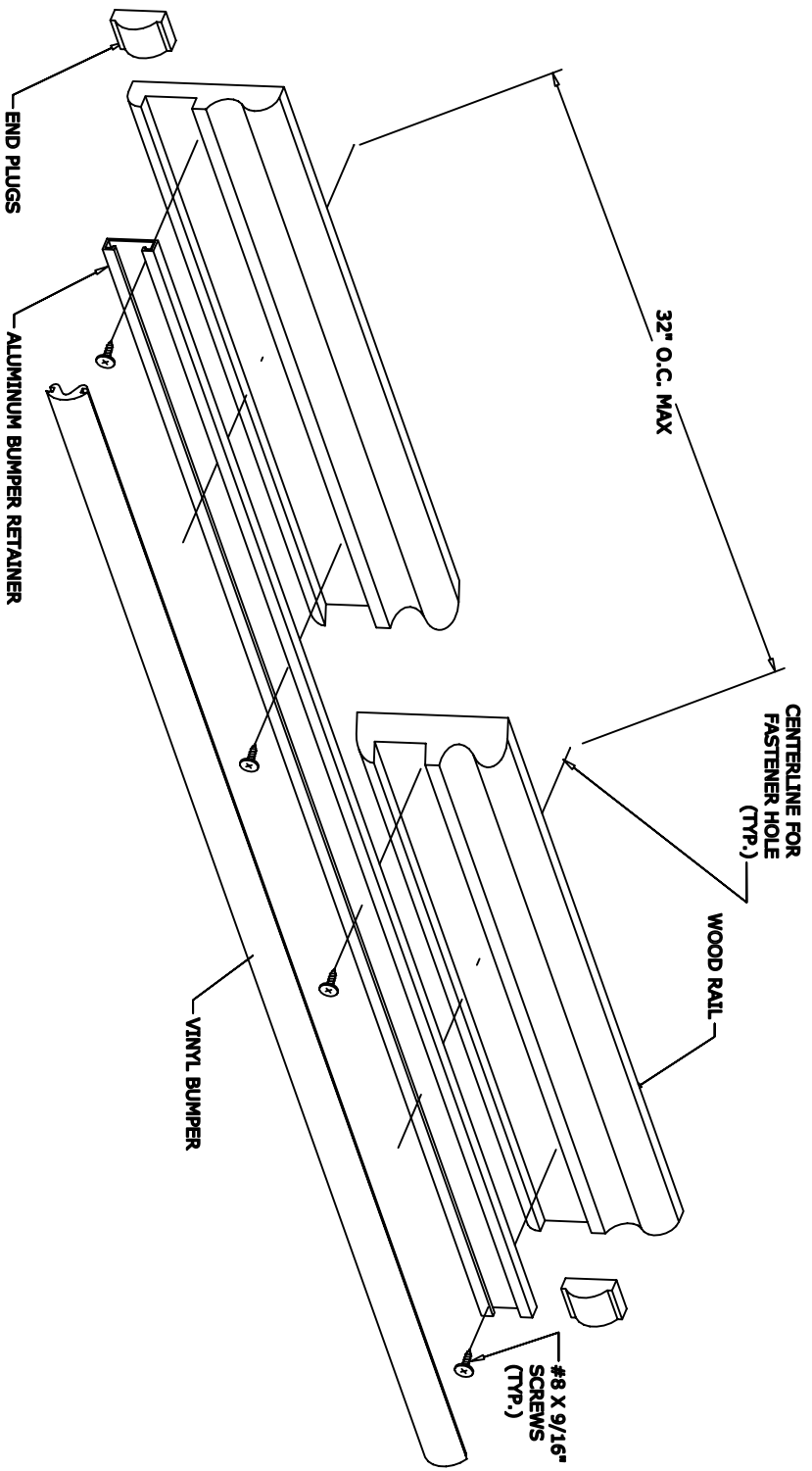


Arden  
Architectural  
Specialties, Inc.™

151 FIFTH AVE. NW SUITE J ST. PAUL, MN 55112-3268  
TOLL-FREE 800.521.1826 TEL 651.631.1607 FAX 651.631.0251

# ASSEMBLY INSTRUCTIONS

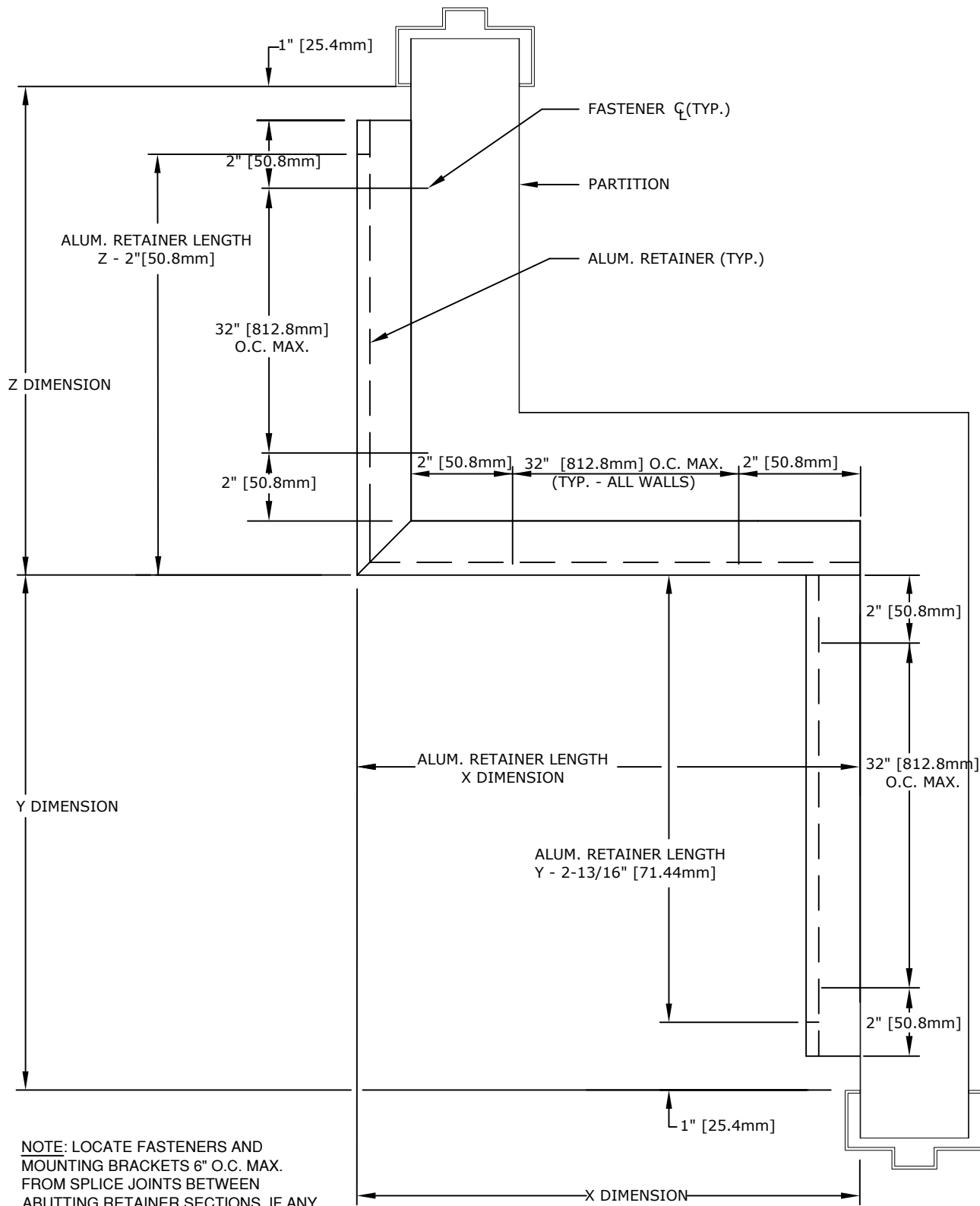
## WCRB-4, WCRB-6



151 FIFTH AVE. NW SUITE 1 ST. PAUL, MN 55112-3268  
TOLL-FREE 800.521.1826 TEL 651.631.1607 FAX 651.631.0251

# STANDARD PLAN DETAIL

## WRCB-4, WCRB-6



NOTE: LOCATE FASTENERS AND MOUNTING BRACKETS 6" O.C. MAX. FROM SPLICE JOINTS BETWEEN ABUTTING RETAINER SECTIONS, IF ANY.

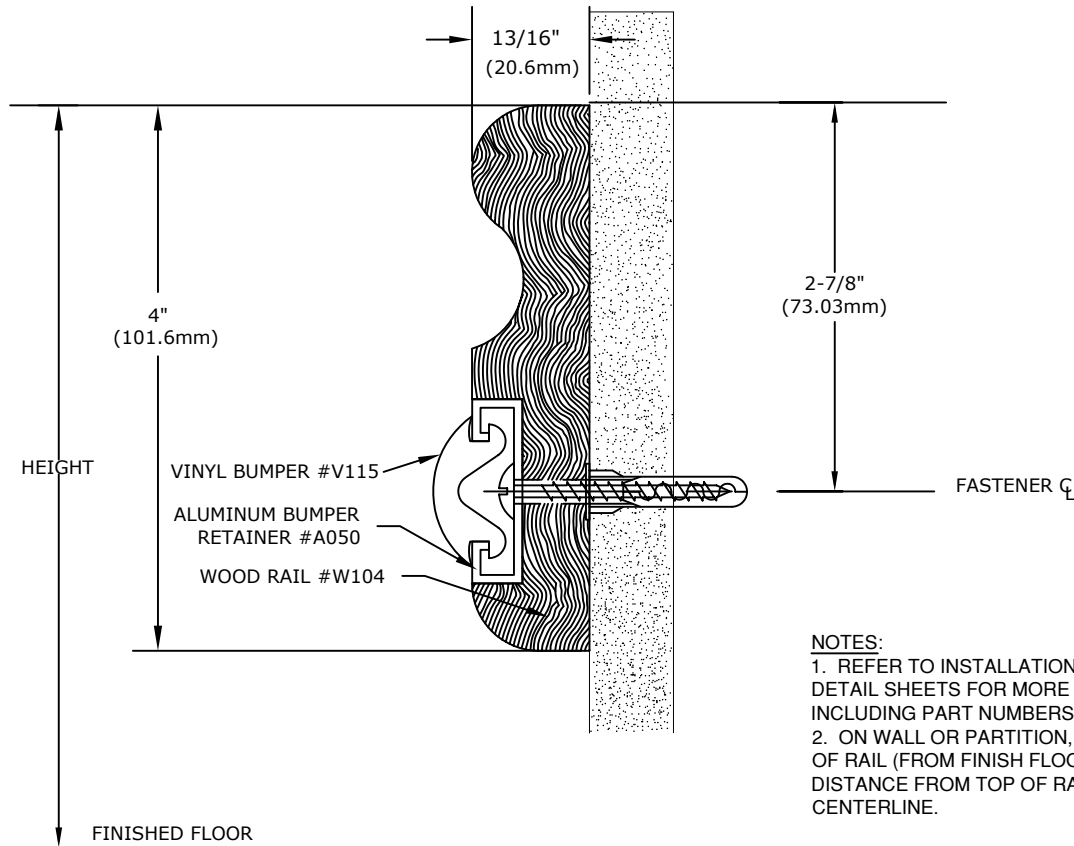


Arden  
Architectural  
Specialties, Inc.™

151 FIFTH AVE. NW SUITE J ST. PAUL, MN 55112-3268  
TOLL-FREE 800.521.1826 TEL 651.631.1607 FAX 651.631.0251

# FASTENER HEIGHT WRCB-4, WCRB-6

(W-WCRB-4 SHOWN)



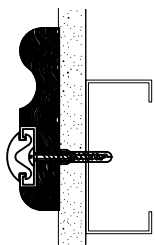
**NOTES:**

1. REFER TO INSTALLATION INSTRUCTIONS AND DETAIL SHEETS FOR MORE INFORMATION, INCLUDING PART NUMBERS.
2. ON WALL OR PARTITION, MARK HEIGHT OF TOP OF RAIL (FROM FINISH FLOOR), THEN SUBTRACT DISTANCE FROM TOP OF RAIL TO FASTENER CENTERLINE.

IMPORTANT: USER SHALL VERIFY CONFORMANCE OF ALL CONSTRUCTIONS SHOWN WITH LOCAL CODES AND WITH REQUIREMENTS OF METAL STUD MANUFACTURER FOR RATINGS. FASTENERS AND PARTITION COMPONENTS NOT BY ARDEN ARCHITECTURAL SPECIALTIES, INC.

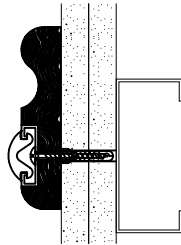
## TYPICAL FASTENING CONDITIONS SHOWN BELOW

1 LAYER GYP. BD.



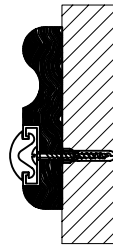
1/4" X 3" LAG SCREW AND TYPE AF6 ALLIGATOR ANCHORS BY MECHANICAL PLASTICS

2 LAYERS GYP. BD.



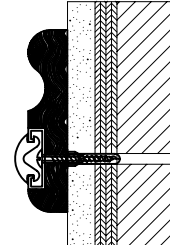
1/4" X 3" LAG SCREW AND TYPE AF6 ALLIGATOR ANCHORS BY MECHANICAL PLASTICS

MASONRY



1/4" X 3" LAG SCREW AND TYPE AF6 ALLIGATOR ANCHORS BY MECHANICAL PLASTICS

GYP. BD. & MASONRY



1/4" X 3" LAG SCREW AND TYPE AF6 ALLIGATOR ANCHORS BY MECHANICAL PLASTICS

**SPECIFICATION:**

**GENERAL:** FURNISH AND INSTALL HANDRAIL SYSTEM(S) BY ARDEN ARCHITECTURAL SPECIALTIES, INC., AS SHOWN AND SPECIFIED.

**INSTALLATION:** SECURE TO WALL OR PARTITION IN ACCORDANCE WITH MANUFACTURER'S PRINTED INSTRUCTIONS. USE FASTENERS DESIGNED AND APPROVED FOR PURPOSE INTENDED, SPACED 32 INCHES [812.8mm] O.C. MAX, UNLESS SPECIFIED OTHERWISE. INSTALL SYSTEM IN ACCORDANCE WITH ALL CODES HAVING JURISDICTION.



151 FIFTH AVE. NW SUITE J ST. PAUL, MN 55112-3268  
TOLL-FREE 800.521.1826 TEL 651.631.1607 FAX 651.631.0251