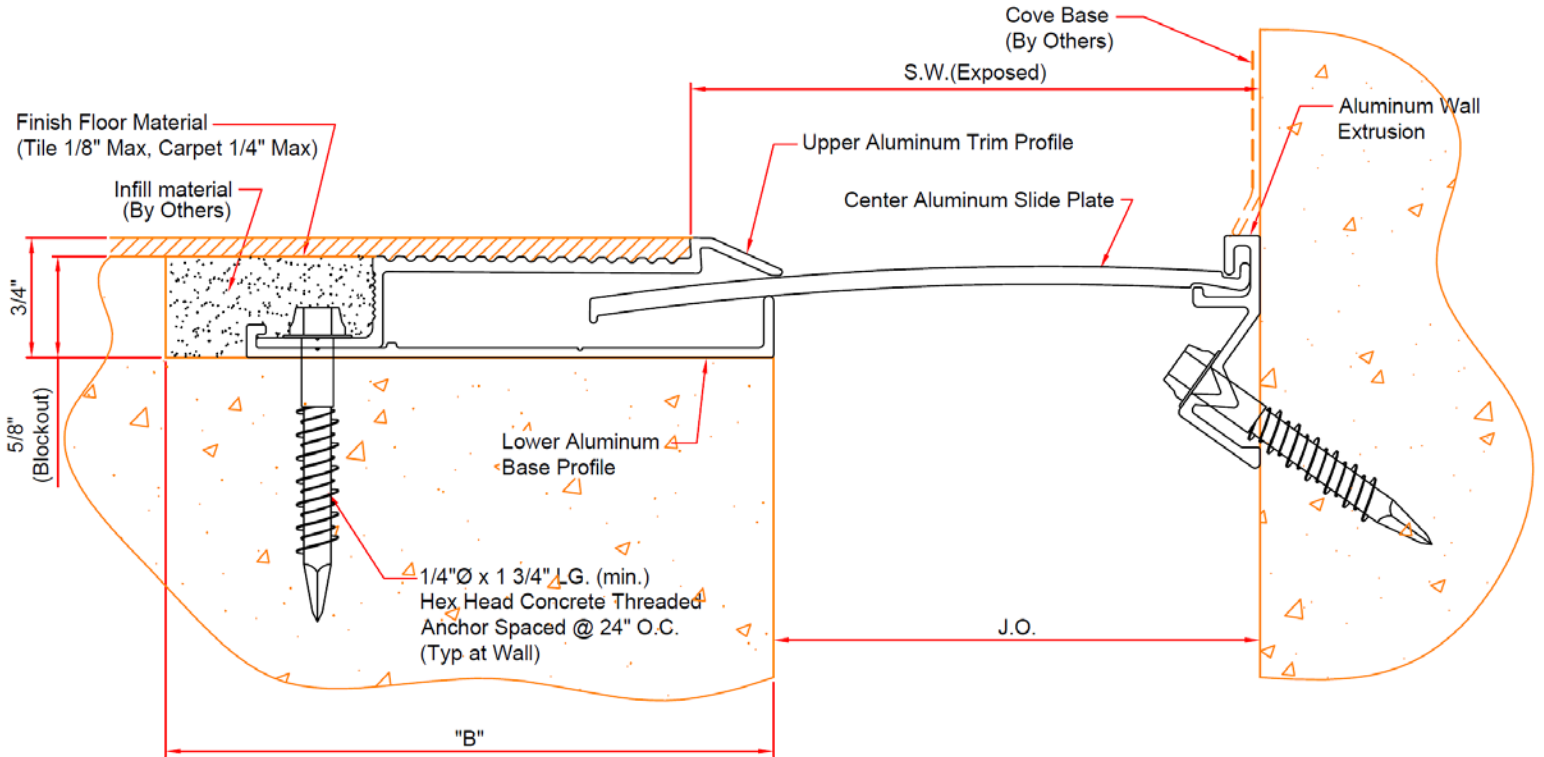


# EJ-NBR-W Series

Expansion joint cover for floors

Floor to wall condition



**Typical Section**

Floor To Corner

Model	"A" Min.	A" Mid.	"A" Max.	Total	S.W.	"B"
EJ-NBR-300W	1 3/4"(44)	3"(76)	4"(102)	2 1/4"(57)	3 1/2"(89)	3 3/4"(95)
EJ-NBR-400W	2 3/4"(70)	4"(102)	5"(127)	2 1/4"(57)	4 1/2"(114)	3 3/4"(95)



Right to site.

Call: 800-547-2635 Fax: 800-317-8770

USA or Canada

Web: [www.nystrom.com](http://www.nystrom.com)

E-mail: [info@nystrom.com](mailto:info@nystrom.com)

PROJECT:

CONTRACTOR:

ARCHITECT:

INITIALS:  QTY:  DATE:  PART NUMBER: