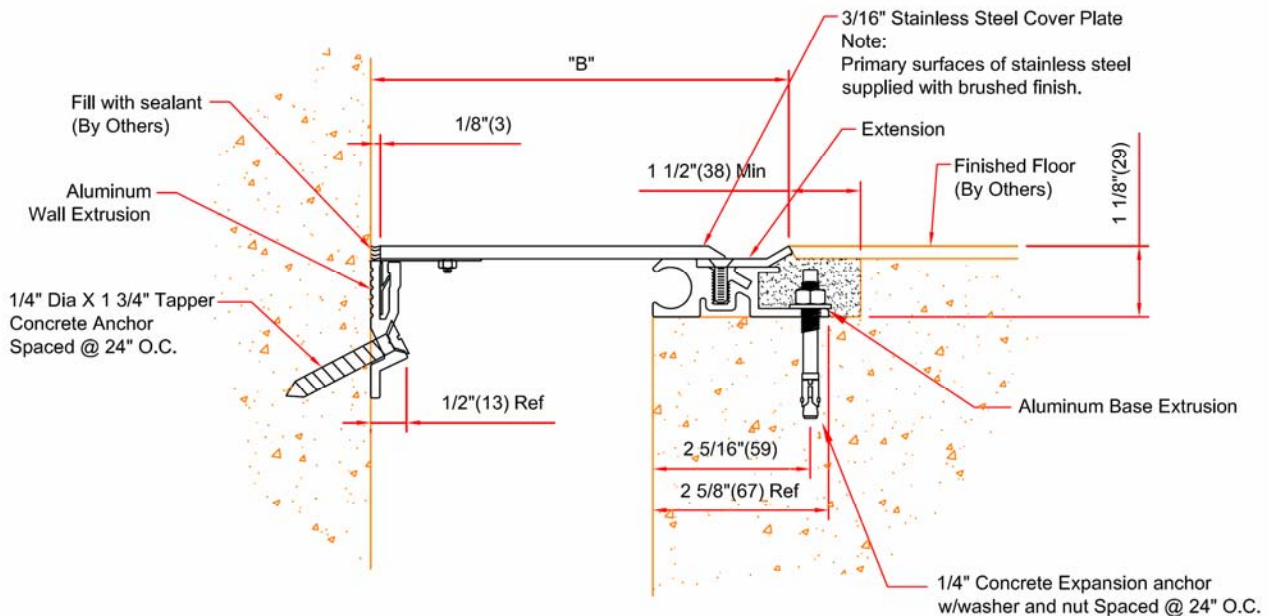


## EJ-SFX-200W

Expansion joint cover for floors

Floor to wall condition, 2 inch joint opening



EJ-SFX-200W DETAIL  
FLOOR TO WALL CONDITION

( ) - Denotes Millimeters

DIMENSION CHART					
Model	"A" @ Min.	"A" @ Mid	"A" @ Max.	"B"	Total Movement
EJ-SFX-200W	1" (25)	2" (51)	2 5/8" (67)	3 7/8" (98)	1 5/8" (41)

Note: Minimum And Maximum Values Are After Movement Occurs. Mid Point Value Is The Recommended Size Of Opening At Installation.



Right to site.

Call: 800-547-2635 Fax: 800-317-8770  
USA or Canada  
Web: [www.nystrom.com](http://www.nystrom.com)  
E-mail: [info@nystrom.com](mailto:info@nystrom.com)

PROJECT: \_\_\_\_\_

CONTRACTOR: \_\_\_\_\_

ARCHITECT: \_\_\_\_\_

INITIALS: \_\_\_\_\_

QTY: \_\_\_\_\_

DATE: \_\_\_\_\_

PART NUMBER: \_\_\_\_\_