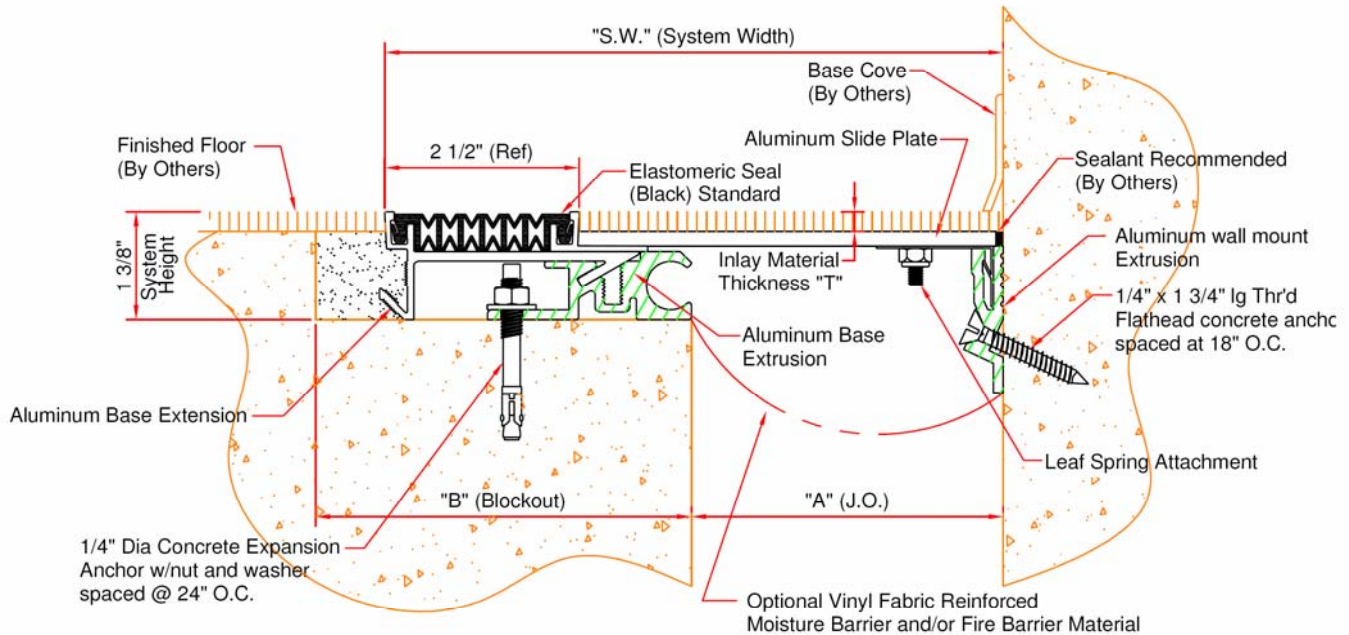


# EJ-SFNB Series

## Expansion joint cover for floors Floor to wall condition



EJ-SFNB-200W thru EJ-SFNB-800W

Model	"A" Min	"A" Mid	"A" Max	"B"	SW @ "A" Mid	Total Seismic Movement	"T"
-SFNB-200W	1 1/2"(38)	2"(51)	3"(76)	5"(127)	5 15/16"(151)	1 1/2"(38)	1/4"(6)
-SFNB-400W	1 1/2"(38)	4"(102)	5"(127)	5"(127)	7 15/16"(202)	3 1/2"(89)	1/4"(6)
-SFNB-600W	1 1/2"(38)	6"(152)	8"(203)	6"(152)	10 15/16"(278)	6 1/2"(165)	1/4"(6)
-SFNB-800W	1 1/2"(38)	8"(203)	10"(254)	6"(152)	12 15/16"(329)	8 1/2"(216)	1/4"(6)



Right to site.

Call: 800-547-2635 Fax: 800-317-8770  
USA or Canada  
Web: [www.nystrom.com](http://www.nystrom.com)  
E-mail: [info@nystrom.com](mailto:info@nystrom.com)

PROJECT: \_\_\_\_\_

CONTRACTOR: \_\_\_\_\_

ARCHITECT: \_\_\_\_\_

INITIALS: QTY: DATE: PART NUMBER: