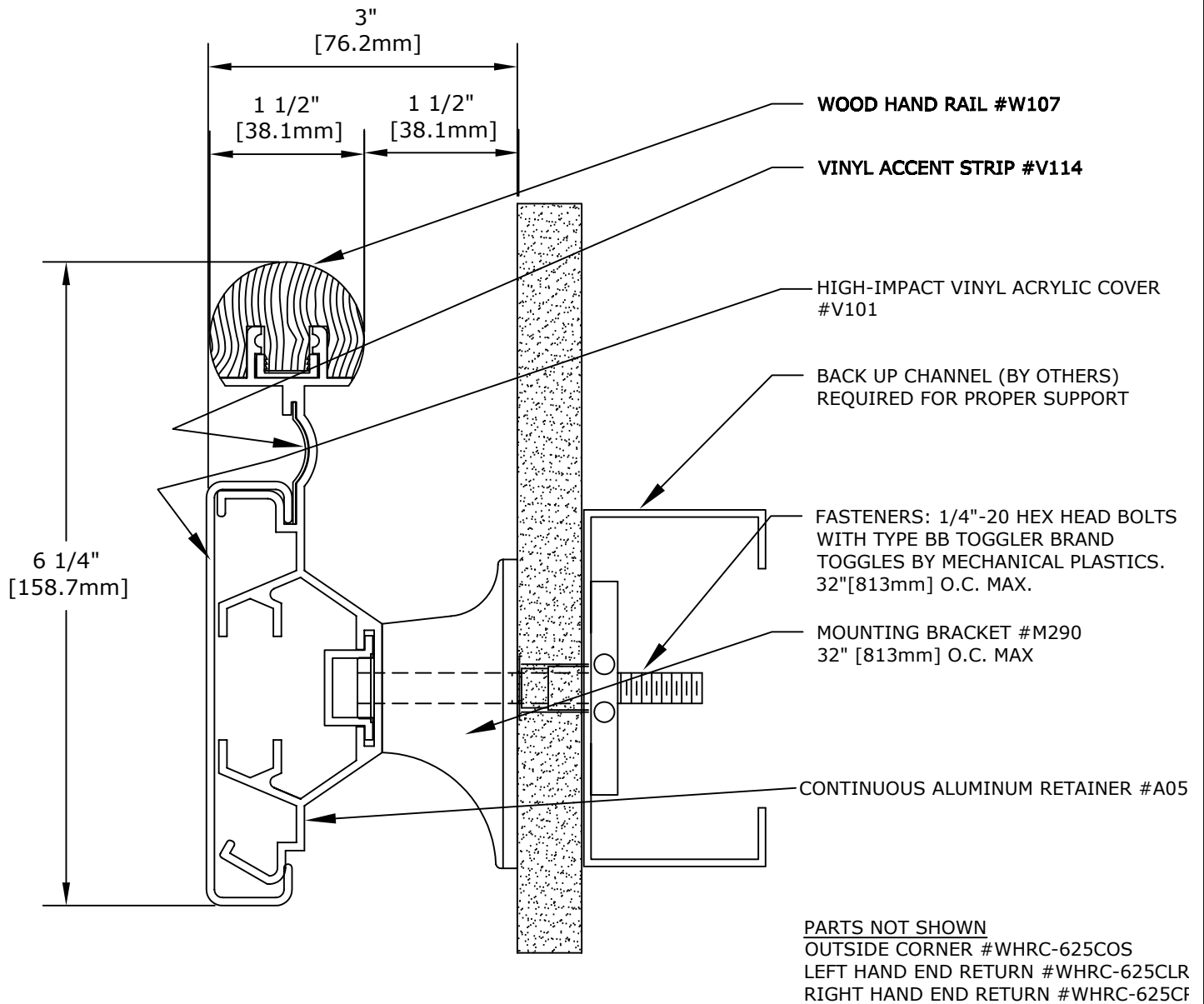


# Wallwear® Integrated Wall Protection Systems

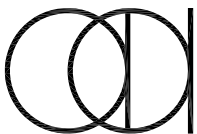


## HANDRAIL SYSTEM WHRC-625

IMPORTANT: USER SHALL VERIFY CONFORMANCE OF ALL CONSTRUCTIONS SHOWN WITH LOCAL CODES AND WITH REQUIREMENTS OF METAL STUD MANUFACTURER FOR RATINGS. FASTENERS AND PARTITION COMPONENTS NOT BY ARDEN ARCHITECTURAL SPECIALTIES, INC.

HANDRAILS	DATE:	SCALE:
-----------	-------	--------

<p><b>GENERAL SPECIFICATION:</b>  <b>RETAINER:</b> ALUMINUM ALLOY TYPE 6063-T5, MILL FINISH .074" [1.88mm] THICK.  <b>CRASH RAIL:</b> HIGH-IMPACT VINYL ACRYLIC, IN ACCORDANCE WITH ASTM D 4226 AND ASTM D 256, .078" [1.98mm] THICK AVAILABLE IN 20' [6.1M] MAXIMUM LENGTHS.  <b>HANDRAIL:</b> FOREST STEWARDSHIP COUNCIL (FSC) CERTIFIED KILN-DRIED SELECT AND BETTER SELECT RED OAK OR MAPLE. HAND RAIL PROVIDED IN 6'-14' [1.83M - 4.27M] RANDOM LENGTHS.  <b>RETURNS AND CORNERS:</b> PRE-ASSEMBLED AND STAINED TO MATCH, HOWEVER, DUE TO NATURAL VARIATIONS PRESENT IN WOOD, GRAIN MAY NOT MATCH EXACTLY.</p>	PROJECT:
	ARCHITECT:
	CONTRACTOR:
	REPRESENTATIVE:



**Arden Architectural Specialties, Inc.™**

151 FIFTH AVE. NW SUITE J ST. PAUL, MN 55112-3268  
TOLL-FREE 800.521.1826 TEL 651.631.1607 FAX 651.631.0251

CUSTOMER:	CUST. NO:	JOB NO:	SHEET OF
-----------	-----------	---------	----------