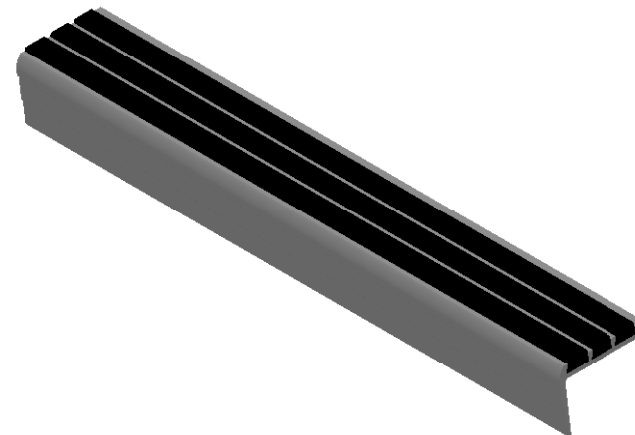


MODEL A1.875D


(SINGLE STAGE RIBBED ABRASIVE BARS)



SPECIFICATIONS:

- ① **BASE:** HEAT TREATED EXTRUDED ALUMINUM
ALLOY 6063 T-5
- ② **ABRASIVE:** ALUMINUM OXIDE SILICON CARBIDE
GRANULES IN A UV PROTECTED, 2 PART EPOXY,
LOCKED INTO EXTRUDED CHANNELS
3. **BASE FINISH:** MILL
4. **POURED CONCRETE STAIRS:** NOSING SHALL
TERMINATE NO MORE THEN 3" FROM END OF STEPS
5. **CONCRETE FILLED STEEL PAN STAIRS:** NOSING
SHALL BE FULL LENGTH OF STEPS, LESS 1/8"
CLEARANCE
6. **COLOR:** BLACK (STANDARD), SAFETY YELLOW,
GRAY, RED, BROWN, GREEN, BURGUNDY, BLUE,
BUFF
7. **LENGTH:** 12'0" MAXIMUM (STANDARD)
8. COUNTER SUNK HOLES PRE-DRILLED FOR A #10
FASTENER SPACED 3" FROM ENDS AND
APPROXIMATELY 12" TO 15" O.C.

LENGTH	QTY	COLOR

PROJECT:					
ARCHITECT:					
CONTRACTOR:					
QTY:					
PART#:		STSB-A1.875D			
 <small>Right to site.</small> 9300 73rd Avenue North Brooklyn Park, MN 55428		TITLE:			
		V830, Stair Tread, Bar Ribbed Abrasive, Long Nose Angled, Drilled For Bolt In,			
	NAME	DATE	SIZE	DWG. NO.	REV
DRAWN	BMH	3/11/11	A	STSB-A1.875D	A
RELEASED	PE	3/11/11	WEIGHT: .9 LB	SHEET 1 OF 1	