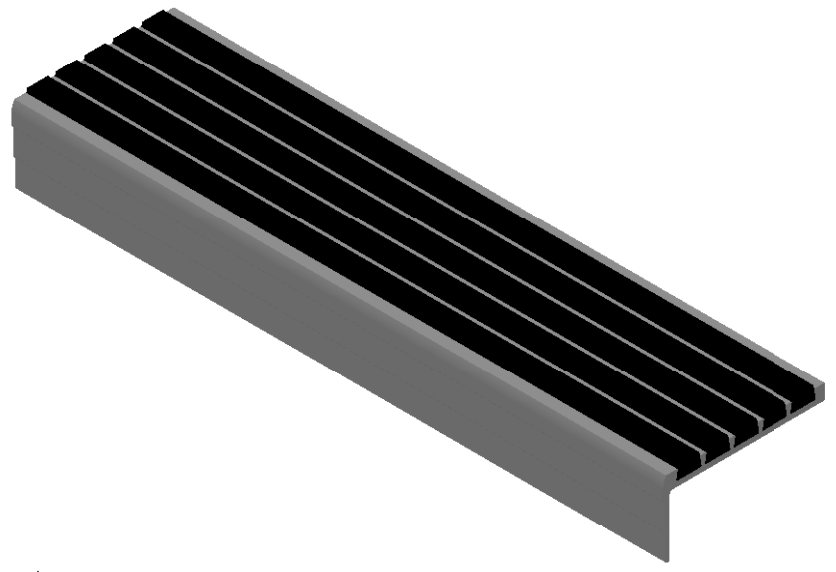


MODEL L3D

(SINGLE STAGE RIBBED ABRASIVE BARS)




SPECIFICATIONS:

- ① **BASE:** HEAT TREATED EXTRUDED ALUMINUM ALLOY 6063 T-5
- ② **ABRASIVE:** ALUMINUM OXIDE SILICON CARBIDE GRANULES IN A UV PROTECTED, 2 PART EPOXY, LOCKED INTO EXTRUDED CHANNELS
- 3. **BASE FINISH:** MILL
- 4. **POURED CONCRETE STAIRS:** NOSING SHALL TERMINATE NO MORE THEN 3" FROM END OF STEPS
- 5. **CONCRETE FILLED STEEL PAN STAIRS:** NOSING SHALL BE FULL LENGTH OF STEPS, LESS 1/8" CLEARANCE
- 6. **COLOR:** BLACK (STANDARD), SAFETY YELLOW, GRAY, RED, BROWN, GREEN, BURGUNDY, BLUE, BUFF

- 7. **LENGTH:** 120" MAXIMUM
- 8. **COUNTER SUNK HOLES PRE-DRILLED FOR A #10 FASTENER SPACED 3" FROM ENDS AND APPROXIMATELY 12" TO 15" O.C.**

LENGTH	QTY	COLOR

PROJECT:			
ARCHITECT:			
CONTRACTOR:			
QTY:			
PART#:		STSB-L3D	
 Right to site. 9300 73rd Avenue North Brooklyn Park, MN 55428		TITLE:	
		V450, Stair Tread, Bar Ribbed Abrasive, Long Nose, Drilled For Bolt In	
NAME	DATE	SIZE	DWG. NO.
DRAWN: BMH	3/11/11	A	STSB-L3D
RELEASED: PE	3/11/11	WEIGHT: 1.33 LB	
			REV: A

PROPRIETARY AND CONFIDENTIAL: THE INFORMATION CONTAINED IN THIS DRAWING IS THE SOLE PROPERTY OF NYSTROM. ANY REPRODUCTION IN PART OR AS A WHOLE WITHOUT THE WRITTEN PERMISSION OF NYSTROM IS PROHIBITED.