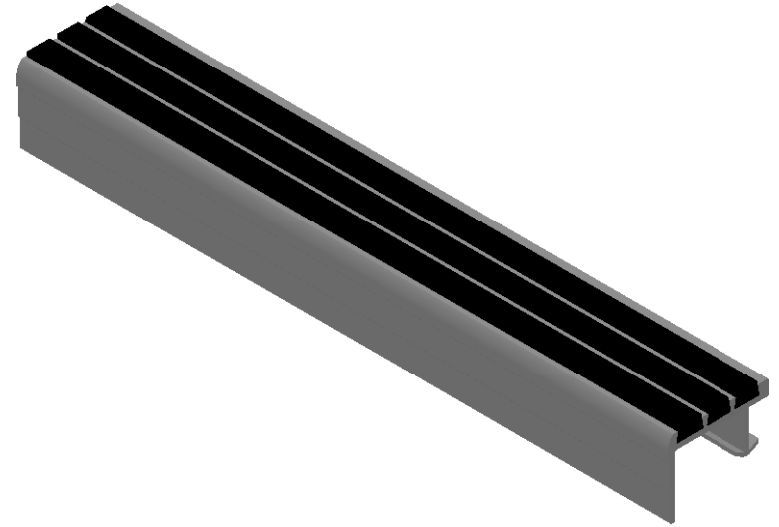


MODEL L1.875E

(SINGLE STAGE RIBBED ABRASIVE BARS)




SPECIFICATIONS:

- ① **BASE:** HEAT TREATED EXTRUDED ALUMINUM
ALLOY 6063 T-5
- ② **ABRASIVE:** ALUMINUM OXIDE SILICON CARBIDE
GRANULES IN A UV PROTECTED, 2 PART EPOXY,
LOCKED INTO EXTRUDED CHANNELS
3. **BASE FINISH:** MILL
4. **POURED CONCRETE STAIRS:** NOSING SHALL
TERMINATE NO MORE THEN 3" FROM END OF STEPS
5. **CONCRETE FILLED STEEL PAN STAIRS:** NOSING
SHALL BE FULL LENGTH OF STEPS, LESS 1/8"
CLEARANCE

6. **COLOR:** BLACK (STANDARD), SAFETY YELLOW,
GRAY, RED, BROWN, GREEN, BURGUNDY, BLUE, BUFF
7. **LENGTH:** 120" MAXIMUM

LENGTH	QTY	COLOR

PROJECT:					
ARCHITECT:					
CONTRACTOR:					
QTY:					
PART#:			STSB-L1.875E		
<div> Right to site. 9300 73rd Avenue North Brooklyn Park, MN 55428</div>			TITLE:		
			V431, Stair Tread, Bar Ribbed Abrasive, Long Nose, Alum Extruded Anchor		
	NAME	DATE	SIZE	DWG. NO.	REV
DRAWN	BMH	3/11/11	A	STSB-L1.875E	A
RELEASED	PE	3/11/11	WEIGHT: .90 LB		SHEET 1 OF 1