

DOUBLE LEAF SPECIFICATIONS

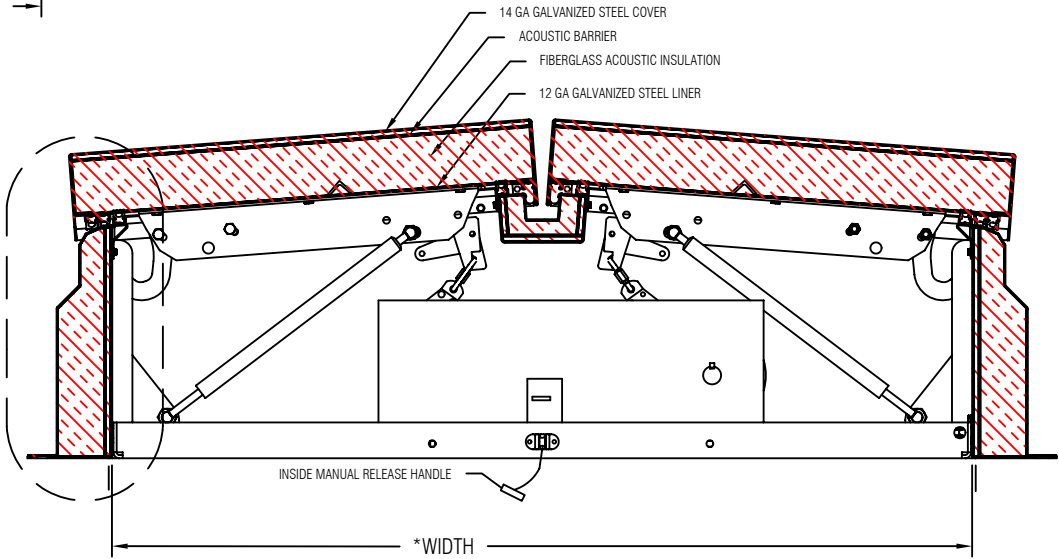
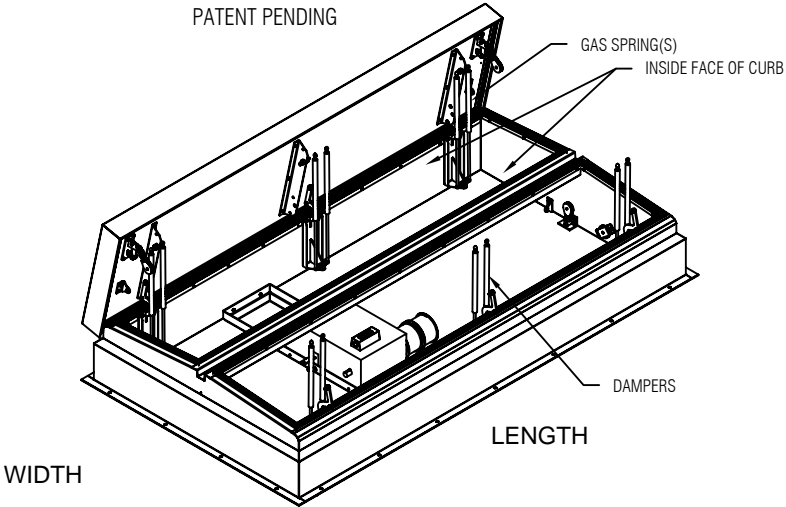
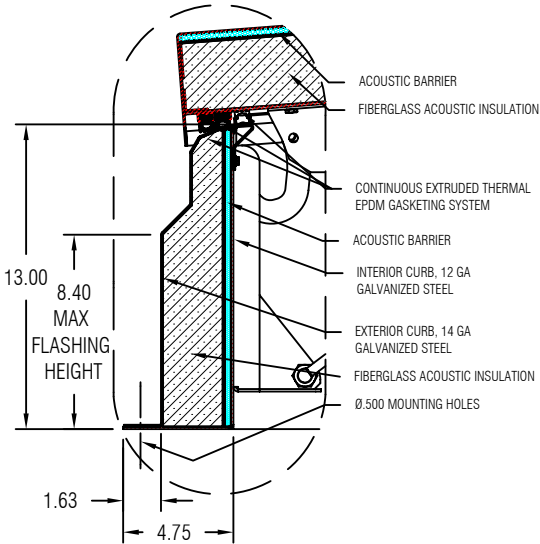
- COVER: 14 GAUGE GALVANIZED STEEL
- LINER: 12 GAUGE GALVANIZED STEEL
- INTERIOR CURB: 12 GAUGE GALVANIZED STEEL
- EXTERIOR CURB: 14 GAUGE GALVANIZED STEEL
- SPRING: HIGH PRESSURE GAS SPRINGS OPEN COVERS AGAINST 10 PSF SNOW OR WIND LOAD
- HARDWARE: ZINC PLATED STEEL
- 3 BUTTON CONTROLLED MOTOR (OPEN, CLOSE, STOP) 115V AC, 1/2HP, 6.5 AMP, 24V RELAY PROVIDED TO OPEN UNIT WITH SIGNAL FROM CUSTOMER CONTROL SYSTEM
- HINGE: ZINC PLATED STEEL TAMPER PROOF HINGE CONTAINED WITHIN HATCH AS PART OF SPRING ASSEMBLY
- INSULATION: 3" THICK ACOUSTIC INSULATION IN COVER AND 1.75" ON CURB PERIMETER
- STC RATING: **45**
- OITC RATING: **37**
- HOLD OPEN ARM: ZINC PLATED STEEL
- FINISH: POWDER COAT PAINT
- MOUNTING FLANGE: 4.73"

| SIZE(S) AVAILABLE (WIDTH X LENGTH) |
|---|
| SIZES WITHIN RANGE 48 X 48 TO 72 X 120 |

*WIDTH AND LENGTH DIMENSIONS ARE FROM THE INSIDE FACE OF CURB TO INSIDE FACE OF CURB
*EFFECTIVE VENTING AREA = 80% W X L

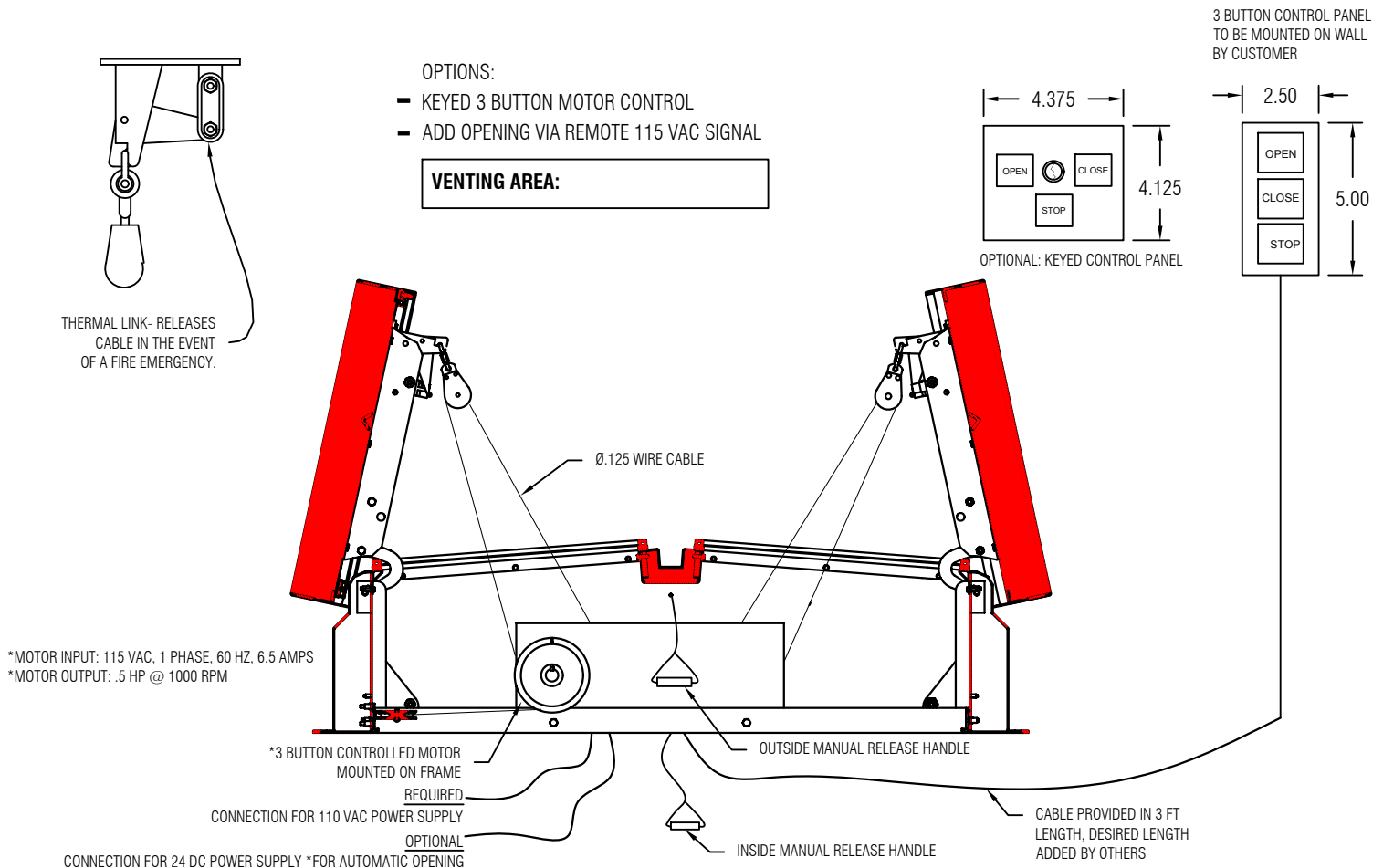
| SIZE- | WIDTH: | LENGTH: |
|-------|--------|---------|
|-------|--------|---------|

General shop drawing - NOT TO SCALE



THE SMOKE VENT USES 110V AC TO ALLOW FOR MOTORIZED OPENING AND CLOSING OF DOOR LEAFS USING A 3 BUTTON CONTROL PANEL. THERMAL LINKS ON EACH LEAF ALLOW AUTOMATIC OPENING IN CASE OF A FIRE EMERGENCY. INCLUDES TERMINALS FOR REMOTE 24VDC SIGNAL TO OPEN DOORS. MINIMAL & OBSTRUCTED CLEAR OPENING.

RELEASE MECHANISM ASSISTED WITH INSIDE AND OUTSIDE RELEASE HANDLE.



STANDARD CURB CONSTRUCTION IS INTENDED FOR INSTALLATION ON FLAT ROOFS ONLY. FOR A SLOPED ROOF APPLICATION PITCH CORRECTED OPTION MUST BE SELECTED.