

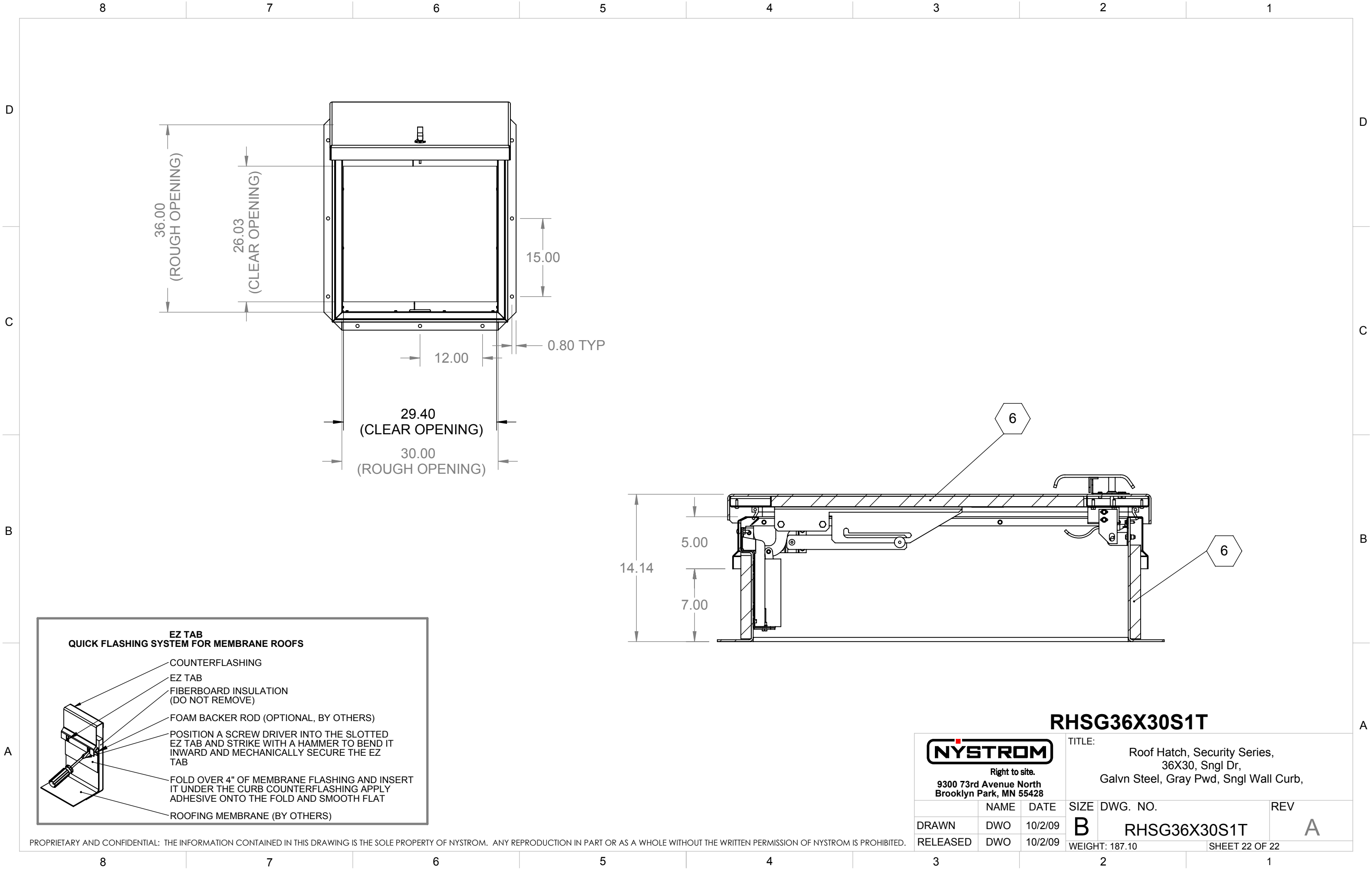
- 1 COVER - 3/16 STEEL COVER STIFFENED TO WITHSTAND A LIVE LOAD OF 40 PSF WITH A MAX DEFLECTION OF 1/150 OF THE SPAN. COVER WITHSTANDS A MAX WIND UPLIFT OF 20 PSF.
- 2 LINER - 22 GAUGE GALVANIZED STEEL
- 3 CURB - 3/16 STEEL (14 GAUGE GALVANIZED COUNTER FLASH
4. HARDWARE - ZINC PLATED STEEL
- 5 LATCH - SINGLE POINT LATCH WITH PROVISION FOR PADLOCK SECURITY

- 6 INSULATION - 1" THICK IN COVER AND 1" THICK ON CURB PERIMETER
- 7 MOUNTING FLANGE - 3.50 INCHES
- 8 HINGE - ZINC PLATED STEEL TAMPER PROOF HINGE CONTAINED WITHIN HATCH AS PART OF SPRING ASSEMBLY
9. SPRING - GREASED HEAVY DUTY COMPRESSION SPRING.
10. FINISH - GRAY POWDER COAT
11. CURB OPENING - 36 X 30 INCHES MEASURE INSIDE CURB TO INSIDE CURB

RHSG36X30S1T



TITLE:		Roof Hatch, Security Series, 36X30, Sngl Dr, Galvn Steel, Gray Pwd, Sngl Wall Curb,		
SIZE	DWG. NO.	REV		
B	RHSG36X30S1T	A		
WEIGHT: 187.10		SHEET 21 OF 22		



PROPRIETARY AND CONFIDENTIAL: THE INFORMATION CONTAINED IN THIS DRAWING IS THE SOLE PROPERTY OF NYSTROM. ANY REPRODUCTION IN PART OR AS A WHOLE WITHOUT THE WRITTEN PERMISSION OF NYSTROM IS PROHIBITED.

 Right to site. 9300 73rd Avenue North Brooklyn Park, MN 55428			RHSG36X30S1T		
			TITLE: Roof Hatch, Security Series, 36X30, Sngl Dr, Galvn Steel, Gray Pwd, Sngl Wall Curb,		
	NAME	DATE	SIZE	DWG. NO.	REV
DRAWN	DWO	10/2/09	B	RHSG36X30S1T	A
RELEASED	DWO	10/2/09	WEIGHT: 187.10 SHEET 22 OF 22		