

- ① COVER - 14 GAUGE GALVANIZED STEEL COVER STIFFENED TO WITHSTAND A LIVE LOAD OF 40 PSF WITH A MAX DEFLECTION OF 1/150 OF THE SPAN. COVER WITHSTANDS A MAX WIND UPLIFT OF 20 PSF.
- ② LINER - 22 GAUGE GALVANIZED STEEL
- ③ CURB - 14 GAUGE GALVANIZED STEEL
4. HARDWARE - ZINC PLATED STEEL
- ⑤ LATCH - 2 POINT LATCHING WITH PROVISION FOR PADLOCK SECURITY

- ⑥ INSULATION - 1" THICK IN COVER AND 1" THICK ON CURB PERIMETER
- ⑦ MOUNTING FLANGE - 3.50 INCHES
- ⑧ HINGE - ZINC PLATED STEEL TAMPER PROOF HINGE CONTAINED WITHIN HATCH AS PART OF SPRING ASSEMBLY
9. SPRING - GREASED HEAVY DUTY COMPRESSION SPRING.
10. FINISH - MILL FINISH
11. CURB OPENING - 30 X 54 INCHES MEASURE INSIDE CURB TO INSIDE CURB



RHPA30X54S1T

TITLE:		Roof Hatch, Personnel Access, 30x54, Sngl Dr, Alum, Mill, Sngl Wall Curb,		
SIZE	DWG. NO.	REV		
B	RHPA30X54S1T	A		
WEIGHT: 142.66		SHEET 20 OF 21		

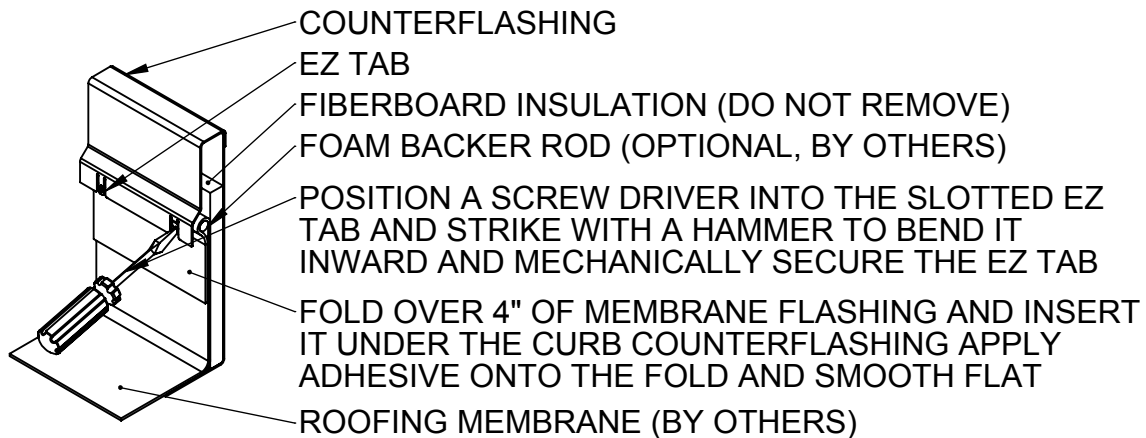
30.00
(ROUGH OPENING)

21.15
(CLEAR
OPENING)

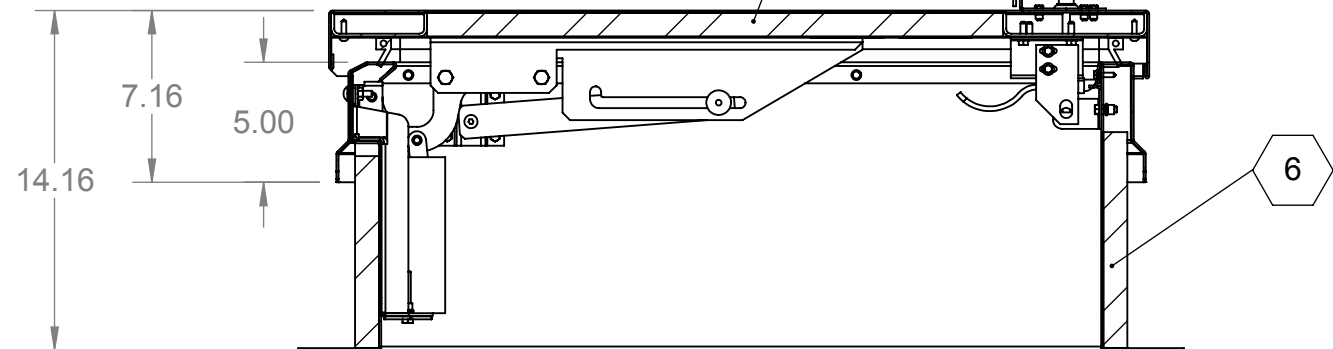
53.43 (CLEAR OPENING)

54.00 (ROUGH OPENING)

EZ TAB
QUICK FLASHING SYSTEM FOR MEMBRANE ROOFS



PROPRIETARY AND CONFIDENTIAL: THE INFORMATION CONTAINED IN THIS DRAWING IS THE SOLE PROPERTY OF NYSTROM. ANY REPRODUCTION IN PART OR AS A WHOLE WITHOUT THE WRITTEN PERMISSION OF NYSTROM IS PROHIBITED.



RHPA30X54S1T



Right to site.
9300 73rd Avenue North
Brooklyn Park, MN 55428

TITLE: Roof Hatch, Personnel Access,
30x54, Sngl Dr,
Alum, Mill, Sngl Wall Curb,

	NAME	DATE	SIZE	DWG. NO.	REV
DRAWN	DWO	06/25/09	B	RHPA30X54S1T	A
RELEASED	DWO	06/25/09	WEIGHT: 142.66		SHEET 21 OF 21