
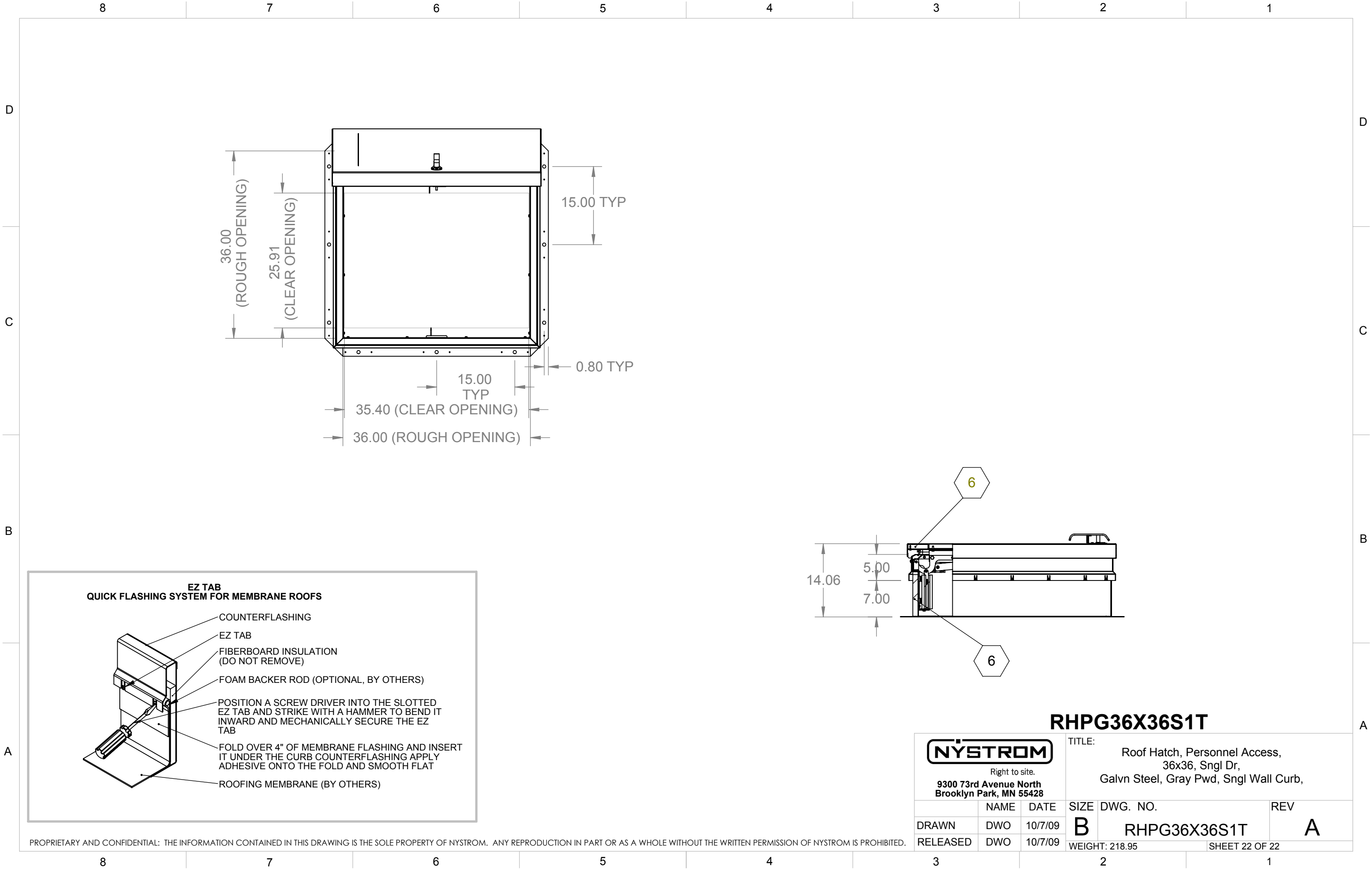


- ① COVER - 14 GAUGE GALVANIZED STEEL COVER STIFFENED TO WITHSTAND A LIVE LOAD OF 40 PSF WITH A MAX DEFLECTION OF 1/150 OF THE SPAN. COVER WITHSTANDS A MAX WIND UPLIFT OF 20 PSF.
- ② LINER - 22 GAUGE GALVANIZED STEEL
- ③ CURB - 14 GAUGE GALVANIZED STEEL
- 4. HARDWARE - ZINC PLATED STEEL
- ⑤ LATCH -SINGLE POINT LATCH WITH PROVISION FOR PADLOCK SECURITY

- ⑥ INSULATION - 1" THICK IN COVER AND 1" THICK ON CURB PERIMETER
- ⑦ MOUNTING FLANGE - 3.50 INCHES
- ⑧ HINGE - ZINC PLATED STEEL TAMPER PROOF HINGE CONTAINED WITHIN HATCH AS PART OF SPRING ASSEMBLY
- 9. SPRING - GREASED HEAVY DUTY COMPRESSION SPRING.
- 10. FINISH - GRAY POWDER COAT
- 11. CURB OPENING - 36 X 36 INCHES MEASURE INSIDE CURB TO INSIDE CURB

RHPG36X36S1T

 Right to site. 9300 73rd Avenue North Brooklyn Park, MN 55428			TITLE: Roof Hatch, Personnel Access, 36x36, Sngl Dr, Galvn Steel, Gray Pwd, Sngl Wall Curb,		
	NAME	DATE	SIZE	DWG. NO.	REV
DRAWN	DWO	10/7/09	B	RHPG36X36S1T	A
RELEASED	DWO	10/7/09	WEIGHT: 218.95 SHEET 21 OF 22		



PROPRIETARY AND CONFIDENTIAL: THE INFORMATION CONTAINED IN THIS DRAWING IS THE SOLE PROPERTY OF NYSTROM. ANY REPRODUCTION IN PART OR AS A WHOLE WITHOUT THE WRITTEN PERMISSION OF NYSTROM IS PROHIBITED.

</