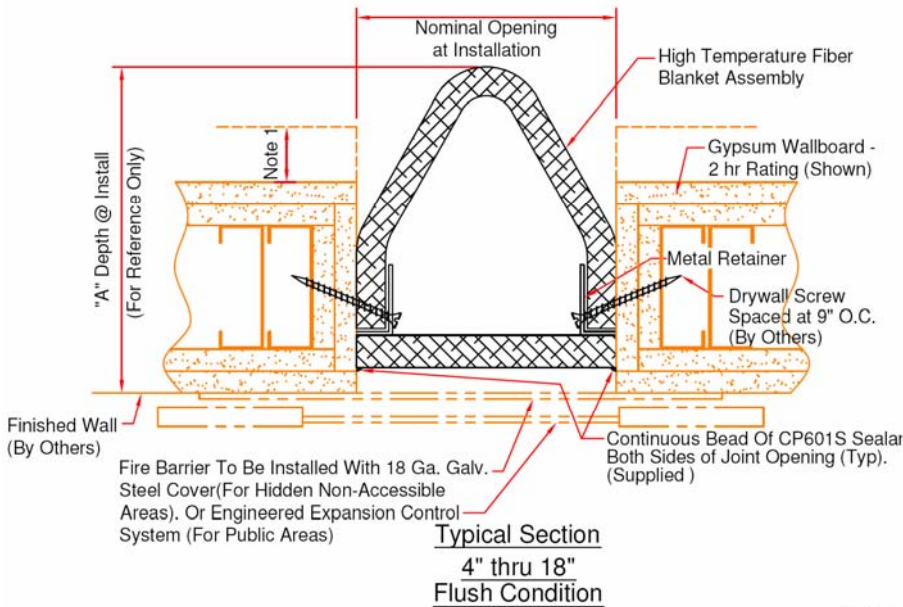


EJ-VFG Series

Fire barrier for 2-18 inch expansion joint openings

Vertical applications, 1, 2 and 3 hour rated



Dimensional Table				
Model (1 hr)	Model (2 hr)	Model (3 hr)	J.O.	Depth "A" *
-	VFG-202	VFG-203	2"	9"
-	VFG-402	-	4"	5"
-	VFG-602	-	6"	6"
VFG-801	VFG-802	-	8"	7 3/8"
VFG-1001	VFG-1002	-	10"	12"
VFG-1201	VFG-1202	-	12"	10 1/2"
-	VFG-1402	-	14"	13"
-	VFG-1602	-	16"	15"
-	VFG-1802	-	18"	17"

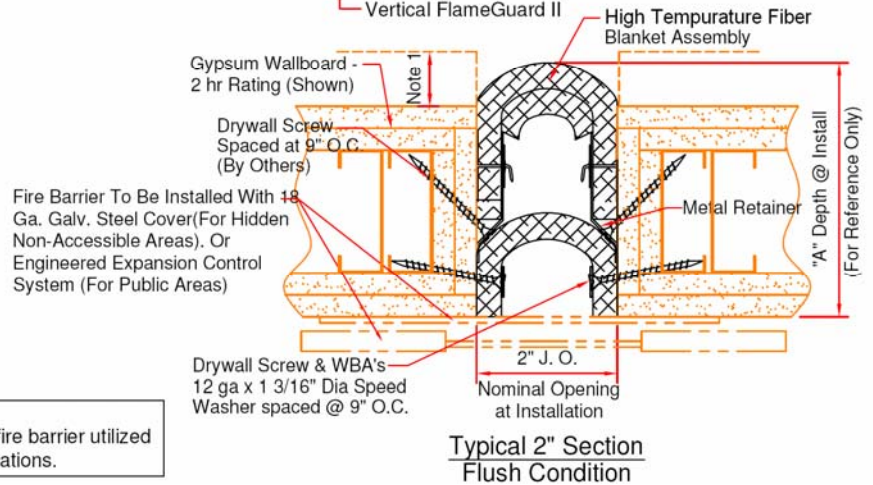
Notes:

1. Wall build out may be required to accommodate larger fire barrier systems installed with "inside opening" expansion joints. Contact Nystrom for proper design assistance.

* Depth of Fire Barrier includes 1" setback at face of wall. Setback can be adjusted for multiple styles of E.J. systems.

Key

- Nominal Opening - 2"
- VFG-201
- VFG-202
- Hourly Rating 1hr, 2hr or 3hr
- Vertical FlameGuard II



Note:
Flush condition fire barrier utilized for corner applications.



Right to site.

Call: 800-547-2635 Fax: 800-317-8770
USA or Canada
Web: www.nystrom.com
E-mail: info@nystrom.com

PROJECT: _____

CONTRACTOR: _____

ARCHITECT: _____

INITIALS: QTY: DATE: PART NUMBER: