

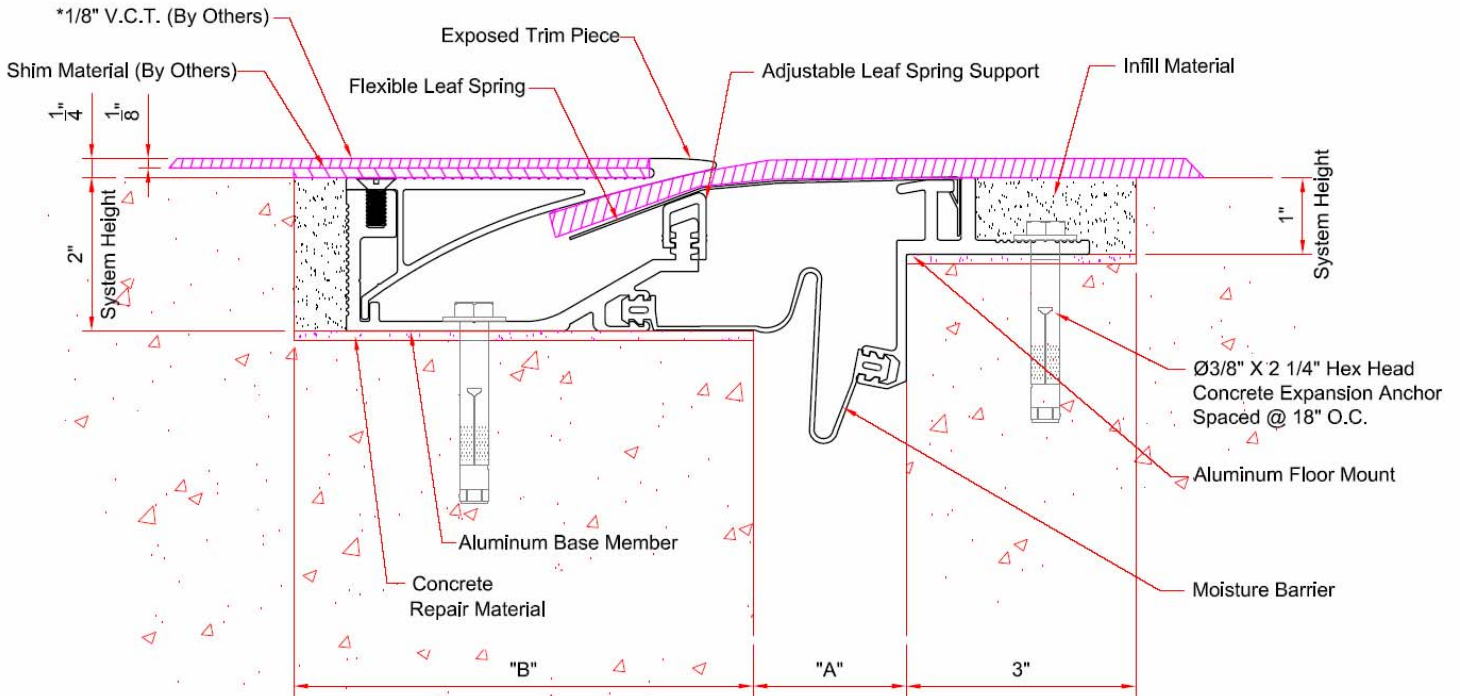


Right to site.

www.nystrom.com

EJ-FLC SERIES

Expansion Joint Cover System for Floors Floor-to-Floor Condition



() - Denotes Millimeters

* Architect To Verify Flexibility Of Tile With Flooring Manufacturer

DIMENSION CHART						
MODEL	SYSTEM HEIGHT	A			B	TOTAL MOVEMENT
		AT INSTALL	ALLOW MIN.	ALLOW MAX.		
EJ-FLC-100	2"(51)	1"(25)	5/8"(16)	1-5/8"(41)	7"(178)	1"(25)
EJ-FLC-200	2"(51)	2"(51)	1"(25)	3"(76)	6"(152)	2"(51)
EJ-FLC-400	2"(51)	4"(102)	2"(51)	6"(152)	4"(102)	4"(102)



Right to site.

Call: 800-547-2635 Fax: 800-317-8770

USA or Canada

Web: www.nystrom.com

E-mail: info@nystrom.com

PROJECT:

CONTRACTOR:

ARCHITECT:

INITIALS: QTY: DATE: PART NUMBER:

- Access Panels
- Floor Hatches
- Roof Hatches
- Smoke Vents
- Louvers
- Fire Cabinets