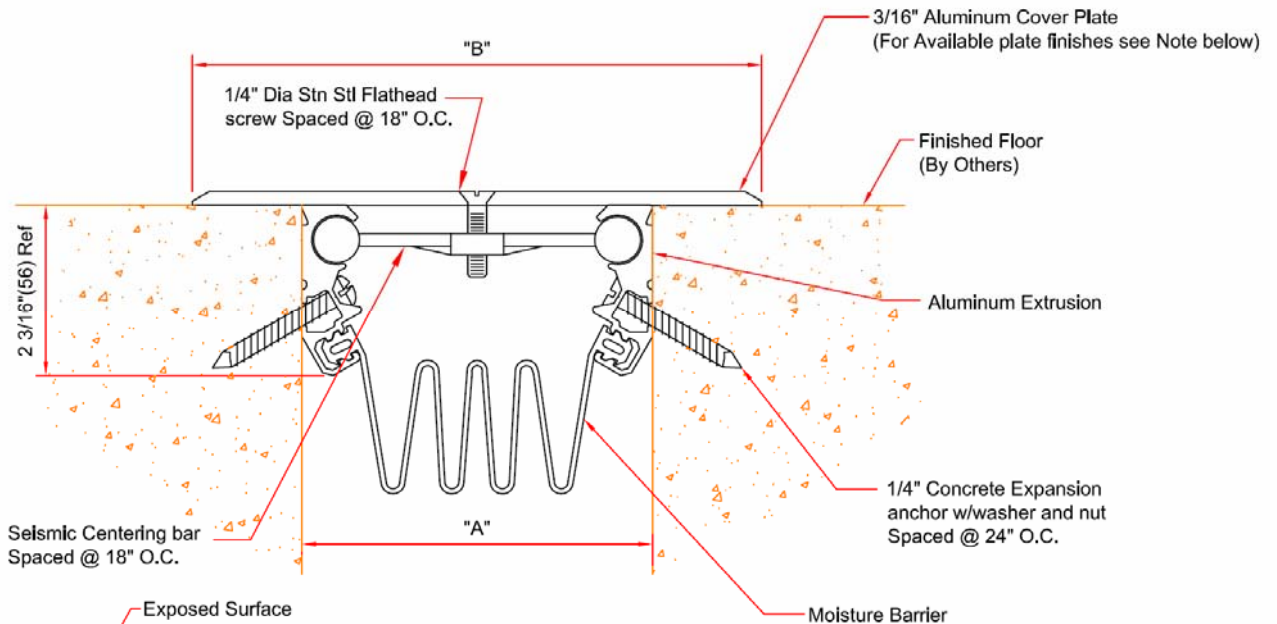


# EJ-SFE-400 thru EJ-SFE-1800

Expansion joint cover for floors

Floor to floor condition, 4" thru 18" joint opening



**EJ-SFE-400 THRU -SFE-1800 DETAIL**  
FLOOR-TO-FLOOR CONDITION

Note:

- For openings up to 6"
  - Plate supplied with grooved surface/mill finish
- For openings greater than 6"
  - Plate supplied with brush finish
  - Grooves optional for plates up to 24" in width

( ) - Denotes Millimeters

DIMENSION CHART					
Model	"A" @ Min.	"A" @ Mid	"A" @ Max.	"B"	Total Movement
-SFE-400	2" (51)	4" (102)	6" (152)	6 1/2" (165)	4" (102)
-SFE-600	2" (51)	6" (152)	9" (229)	9 1/2" (241)	7" (178)
-SFE-800	2" (51)	8" (203)	12" (305)	12 1/2" (317)	10" (254)
-SFE-1000	2" (51)	10" (254)	15" (381)	15 1/2" (394)	13" (330)
-SFE-1200	2" (51)	12" (305)	18" (457)	18 1/2" (470)	16" (406)
-SFE-1800	2" (51)	18" (457)	27" (686)	27 1/2" (699)	25" (635)

Note: Minimum And Maximum Values Are After Movement Occurs. Mid Point Value Is The Recommended Size Of Opening At Installation.



Right to site.

Call: 800-547-2635 Fax: 800-317-8770  
USA or Canada  
Web: [www.nystrom.com](http://www.nystrom.com)  
E-mail: [info@nystrom.com](mailto:info@nystrom.com)

PROJECT: \_\_\_\_\_  
CONTRACTOR: \_\_\_\_\_  
ARCHITECT: \_\_\_\_\_  
INITIALS: QTY: DATE: PART NUMBER: