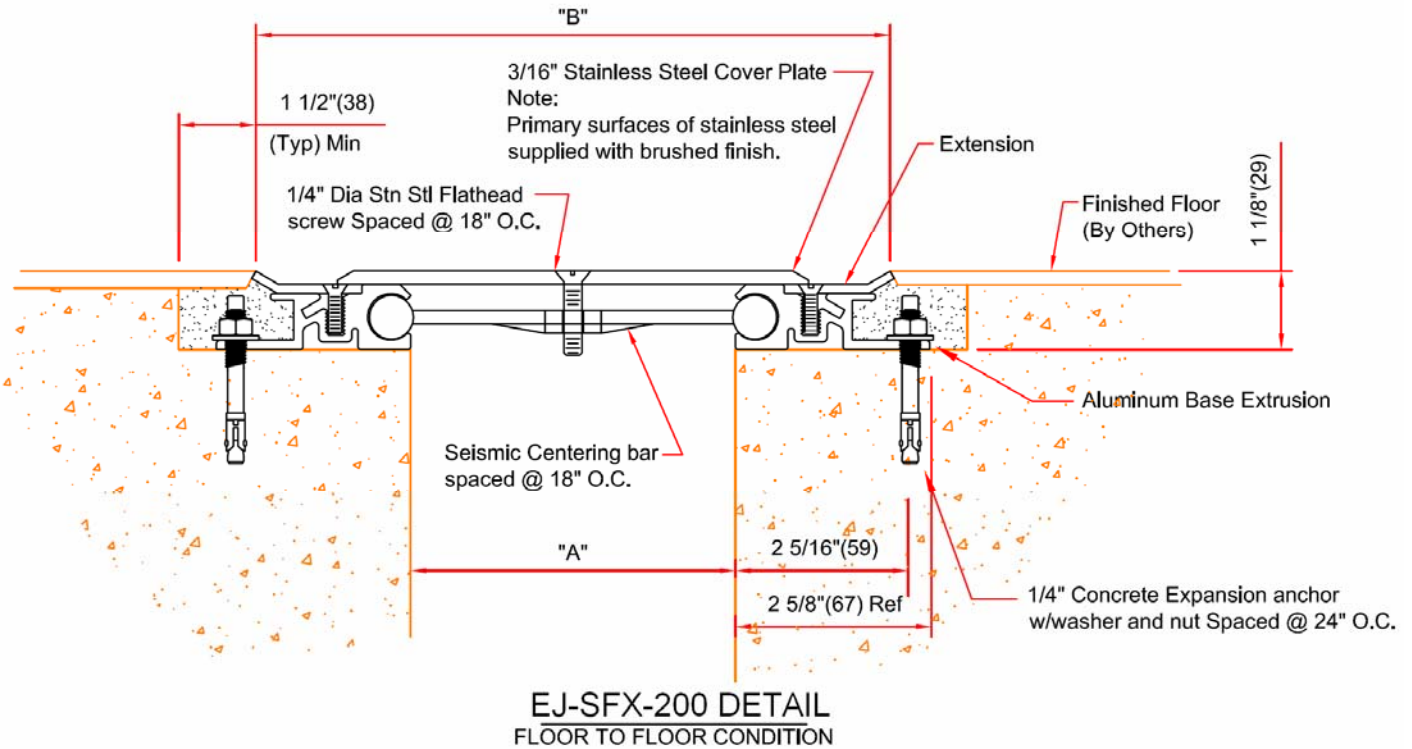


# EJ-SFX-200

Expansion joint cover for floors

Floor to floor condition, 2 inch joint opening



( ) - Denotes Millimeters

DIMENSION CHART					
Model	"A" @ Min.	"A" @ Mid	"A" @ Max.	"B"	Total Movement
EJ-SFX-200	1" (25)	2"(51)	3"(76)	6 1/4"(159)	2"(51)

Note: Minimum And Maximum Values Are After Movement Occurs. Mid Point Value Is The Recommended Size Of Opening At Installation.



Right to site.

Call: 800-547-2635 Fax: 800-317-8770  
USA or Canada  
Web: [www.nystrom.com](http://www.nystrom.com)  
E-mail: [info@nystrom.com](mailto:info@nystrom.com)

PROJECT:

CONTRACTOR:

ARCHITECT:

INITIALS:      QTY:      DATE:      PART NUMBER: