

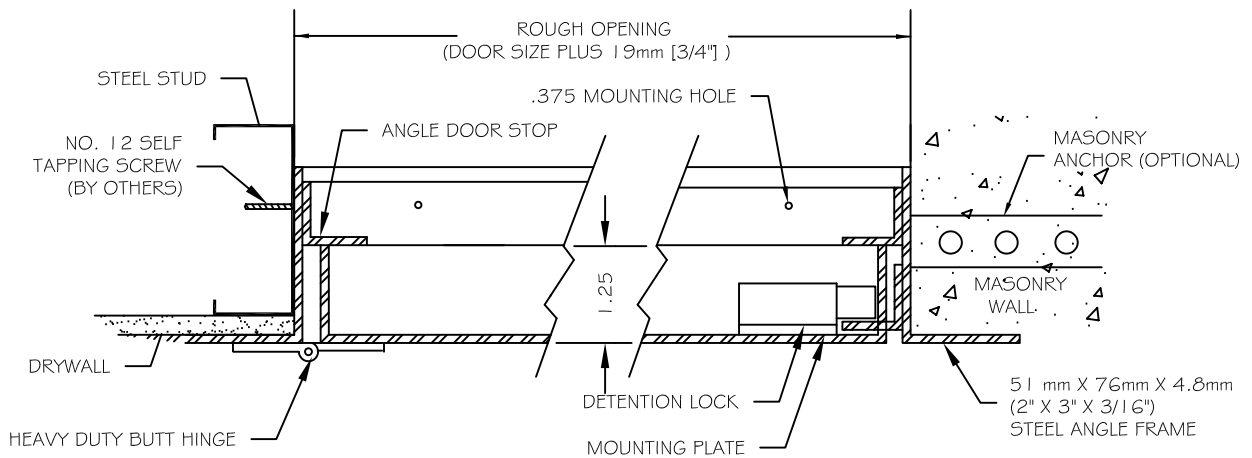
FRONT ELEVATION  
NOT TO SCALE

### SPECIFICATIONS

- 51 mm X 76mm X 4.8mm (2" x 3" x 3/16") STEEL ANGLE FRAME
- 25mm X 25mm X 3.2mm (1" x 1" x 1/8") STEEL ANGLE DOOR STOP
- 7 GAUGE FORMED STEEL DOOR
- ALL EXPOSED JOINTS WELDED, FILLED AND GROUND SMOOTH
- GRAY BAKED ON POWDER COAT FINISH
- 102mm X 102mm (4" X 4") BUTT HINGE WELDED TO DOOR AND FRAME
- PREPARED TO MOUNT STANDARD DETENTION LOCK USING 5/16 - 18 X 1.75: FLAT HD PINNED TORX SECURITY SCREWS (SCREWS PROVIDED WHEN FACTORY FURNISHES LOCK)

### OPTIONS

- PREPARATION FOR 1.125" CYLINDER BY OTHERS (OR BY FACTORY)
- ZINC RICH COMPOUND APPLIED TO ALL SURFACES
- MASONRY ANCHORS ATTACHED



A  
A  
CUT-THRU SECTION  
NOT TO SCALE

Standard Features:

- Door: 7 gauge (4.55mm thick) formed hot rolled steel  
Frame: 2 x 3 x 3/16" (50.8mm x 76.2mm x 4.76mm) steel angle  
Hinge: Heavy duty butt hinges  
Optional: continuous piano hinge  
Latch: Heavy duty detention lock preparation (lock provided by factory or others)  
Optional: mortise cylinder preparation (cylinder provided by factory or others)  
Finish: Gray baked on powder coat
- 

Specifications:

Frame shall be 2 x 3 x 3/16" (50.8mm x 76.2mm x 4.76mm) steel angle. Door shall be fabricated from 7 gauge (4.55 mm thick) formed hot rolled steel. Hinges shall be heavy duty butt type hinges (optional: continuous piano type hinge). Latch shall be a heavy duty detention lock preparation (lock provided by factory or others). (Optional; mortise cylinder preparation (cylinder provided by factory or others). Finish shall be gray baked on powder coat.

Installation shall be in accordance with manufacturers instructions. Manufacturer shall guarantee against defects in material and workmanship for a period of one year.

---

Standard Sizes:

Std Sizes (in)	Std Sizes (mm)	Weight
12x12	305x305	40
16x16	406x406	51
18x18	457x457	56
22x30	559x762	79
24x24	610x610	75
24x36	610x914	99
24x40	610x1016	130
24x48	610x1219	140
36x36	914x914	137

All units are hinged on the second dimension (height). Rough opening is door size plus 3/4".