

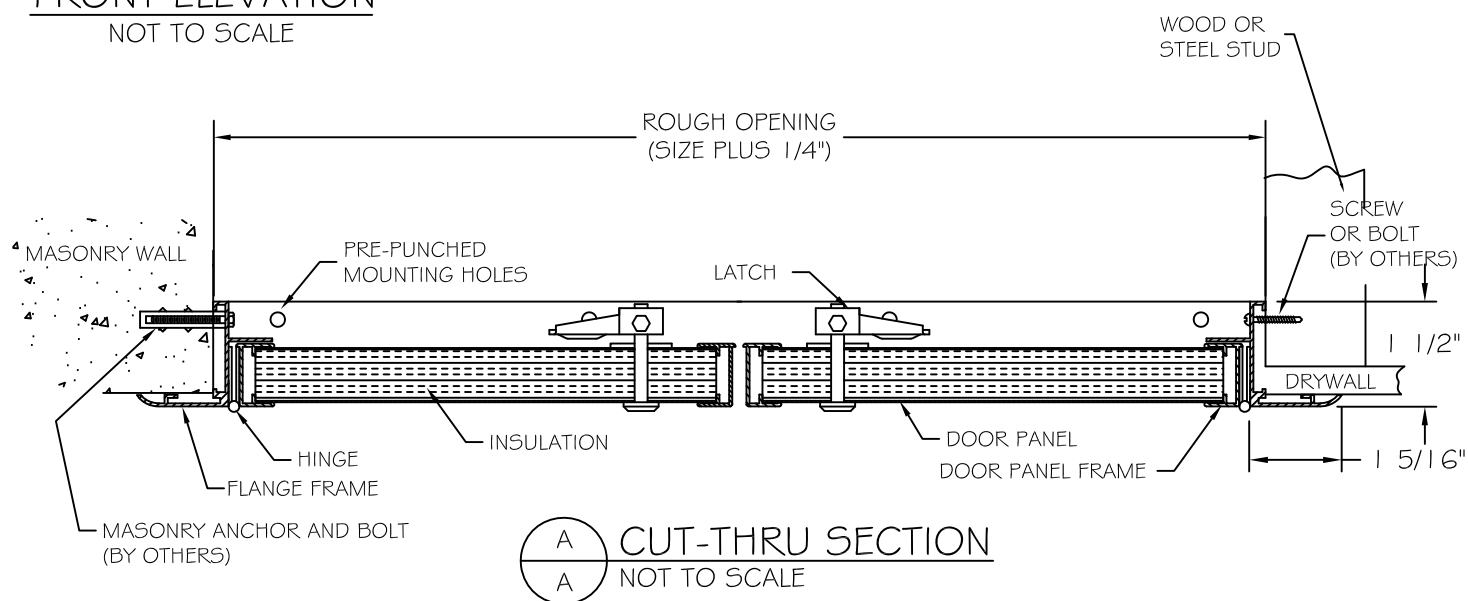
## SPECIFICATIONS

- .045-6063-T5 EXTRUDED ALUMINUM DOOR FRAME
- 24 GA. PRE-FINISHED EMBOSSED GALV. STEEL DOOR
- 3/4" EXTRUDED POLYSTYRENE INSULATION, 3.8 R VALUE
- .080-6063-T5 EXTRUDED ALUMINUM EXPOSED FLANGE
- CONTINUOUS ALUMINUM PIANO HINGE
- CLEAR ANODIZED FINISH ON EXTRUDED ALUMINUM FRAMES
- FLUSH, SCREWDRIVER OPERATED CAM LATCH

## OPTIONS

- ☐ KEY OPERATED CAM LOCK
- ☐ NEOPRENE GASKETING
- ☐ 18 GA ALUMINUM PANEL INSERT

FRONT ELEVATION  
NOT TO SCALE



CUT-THRU SECTION  
NOT TO SCALE

#### Standard Features:

Door (2) : 24 ga pre-finished embossed galvanized steel  
Optional: .063 mill finish aluminum panel insert  
Door Panel Frame (2) : 6063-T5 extruded aluminum  
Flanged Frame: .045 6063-T5 extruded aluminum with rolled 1-5/16" flange  
Hinge (2): Zinc plated continuous piano hinge  
Optional: aluminum continuous piano hinge  
Latch: Screwdriver cam latch(es)  
Optional: key operated cam lock  
Finish: Clear anodized extruded aluminum frames  
Insulation: 3/4" polystyrene with 3.8 R value @ 75 degree F

---

#### Specifications:

Frame shall be .045 6063-T5 extruded aluminum with rolled 1-5/16" flange. Doors shall be fabricated from 24 ga pre-finished embossed galvanized steel (optional: .063 mill finish aluminum insert), (2) 6063-T5 extruded aluminum frames and 3/4" polystyrene insulation. Hinges shall be zinc plated continuous piano type (optional: aluminum continuous piano type; with aluminum panel insert). Insulation shall be 3/4" polystyrene with 3.8 R value @ 75 degree F temperature. Latches shall be screwdriver operated cam type (Optional: key operated cam lock). Finish of aluminum flanged frame and door frames shall be clear anodized.

Installation shall be in accordance with manufacturers instructions. Manufacturer shall guarantee against defects in material and workmanship for a period of one year.

---

#### Standard Sizes:

Standard Sizes (in)	Std Sizes (mm)	# of Latches
48x48	1219x1219	4
60x48	1524x1219	4
72x48	1828x1219	4

All units are hinged on the second dimension (height). Rough opening equals door size + 1/4".