

# CertainTeed

## Commercial Roof Systems

### Selection Guide

#### Good - Better - Best. Don't specify less.

The chart below is a quick guide to choosing the right roof system for your needs.  
Please note: the best roofs have adequate drainage and utilize a double-layer of FlintBoard™ roof insulation.

GOOD		BETTER		BEST	
Nailable Decks	Non-Nailable	Nailable Decks	Non-Nailable	Nailable Decks	Non-Nailable
<b>APP</b>					
Nailed base and 1 APP cap	Mopped base and 1 APP cap	Nailed base and 1 premium APP cap	Mopped base and 1 premium APP cap	Nailed base, 1 smooth APP ply and 1 APP cap	Mopped base, 1 smooth APP ply and 1 APP cap
<b>SBS</b>					
Nailed base and 1 SBS premium cap	Mopped base and 1 SBS premium cap	Nailed base, 1-2 BUR fiber glass interply sheets, 1 SBS cap	Mopped base, 1-2 BUR fiber glass interply sheets, 1 SBS cap	Nailed base, 1 smooth SBS premium ply and 1 SBS premium cap	Mopped base, 1 smooth SBS premium ply and 1 SBS premium cap
<b>BUR</b>					
Nailed base, 2 BUR interply sheets, gravel surfacing or fiber glass cap	Mopped base, 2 BUR interply sheets, gravel surfacing or fiber glass cap	Nailed base, 3 BUR interply sheets, gravel surfacing or fiber glass cap	Mopped base, 3 BUR interply sheets, gravel surfacing or fiber glass cap	Nailed base, 3 BUR interply sheets, 1 premium BUR cap	Mopped base, 3 BUR interply sheets, 1 premium BUR cap
<b>SA</b>					
SA NailBase SA Cap	SA PlyBase SA Cap	SA NailBase SA Plybase SA Cap	2 SA Plybase SA Cap	SA NailBase SA Mid Ply SA Cap	SA PlyBase SA Mid Ply SA Cap

Get system specifications and CAD details @ [www.certainteed.com/lowslopetechinfo](http://www.certainteed.com/lowslopetechinfo) or download CertaSpec, our specification writing tool @ [www.certainteed.com/certaspec](http://www.certainteed.com/certaspec).

#### ASK ABOUT OUR OTHER CERTAINTEED PRODUCTS AND SYSTEMS:

**EXTERIOR:** ROOFING • SIDING • WINDOWS • FENCE • RAILING • TRIM • DECKING • FOUNDATIONS • PIPE  
**INTERIOR:** INSULATION • GYPSUM • CEILINGS

CertainTeed Corporation  
P.O. Box 860  
Valley Forge, PA 19482

Professional: 800-233-8990  
Fax-on-Demand: 800-947-0057  
[www.certainteed.com](http://www.certainteed.com)

**CertainTeed** 

# make the right choice

## Experts in residential and commercial roofing

CertainTeed is a leading manufacturer of commercial and residential roofing products and is a division of Saint-Gobain, the world's largest manufacturer of building materials. Saint-Gobain ranks among the world's top 100 industrial corporations, operating through a global network of more than 600 companies in more than 50 countries.

A quality roof depends on two essential elements: excellent materials and superior workmanship. CertainTeed has been one of North America's leading roofing material manufacturers for over 100 years.

## Innovative solutions



CertainTeed leads the way in smart, energy-saving products that help you meet new building standards. For instance, our CoolStar™ products with solar-reflective surfaces meet ENERGY STAR® and initial California Title 24 requirements, and offer several installation advantages.

## Workmanship is key

To help assure the best possible workmanship for your commercial roof installation, CertainTeed has established the Gold and Silver Star Contractor programs. These programs offer the building owner a selection of highly credentialed roofing contractors who have met the strictest criteria relating to financial credibility, workmanship history and sound business practices, including proper licenses and appropriate insurance.



## Outstanding warranty options

Only CertainTeed Gold and Silver Star Contractors are eligible to apply for CertainTeed's NDL (No Dollar Limit) and Integrity Coverage (IC) warranties on specific roof projects.

The three levels of IC warranties (see box below) are only available through CertainTeed Gold Star Contractors. Owners and specifiers who choose an IC option have the added security of manufacturer involvement in the maintenance and upkeep of each roofing system to maximize the life expectancy of the roof.

Contact CertainTeed for complete warranty and maintenance plan details, including limitations and costs.

Program Elements	Integrity NDL (GOOD)	Integrity Assurance (BETTER)	Integrity Maintenance (BEST)
Premium Details	✓	✓	✓
Premium System Specification	✓	✓	✓
25-year NDL Warranty	✓	✓	✓
Inspections	N/A	Annual	Semi-Annual
Maintenance	N/A	N/A	Semi-Annual
Non-CertainTeed Roof Component Coverage	N/A	N/A	✓
Post-Storm Emergency Response	N/A	N/A	✓
Owner Requirements	Proof of Maintenance; Notification of Alterations	Proof of Maintenance; Notification of Alterations	Notification of Alterations

# the quality difference

## BUR (Built-Up Roofing)

Traditional built-up roofing (BUR) derives its name from the building of a roof on-site using layers of base sheet, interply sheets and cap sheet or other surfacing such as gravel or liquid coating. Hot asphalt (bitumen) is the bonding and waterproofing agent between layers. BUR is suitable for most low slope roofing applications. The higher the quality of the BUR materials and asphalt used and the greater the number of plies (and separate asphalt moppings), the more superior the roof system.



## APP and SBS modified bitumen

In the 1970s, technological advances in asphalt sciences led to the development of modifiers such as APP (atactic polypropylene) and SBS (styrene-butadiene-styrene) which, when added to unblown (unoxidized) asphalt, impart either plastic (APP) or rubber (SBS) characteristics. These additives provide enhanced performance characteristics to traditional



asphalt. When coupled with reinforcements, such as polyester (superior elongation abilities) or fiber glass (high tensile strength), they create high-performance roof membranes.

APP modified bitumen membranes are self-adhering when heated using a roofing torch. SBS modified bitumen membranes can be formulated for torch application, but are more commonly applied using hot asphalt or cold SBS modified bitumen adhesive. The result is a BUR system with significantly enhanced performance capabilities. Continuing improvements in technology have also resulted in self-adhering SBS roof membranes.

When an SBS or APP cap sheet is combined with traditional BUR base sheets and interply sheets, the result is a hybrid roof offering the best of both systems, multiple plies and superior performance and longevity.

## Keep the following factors in mind when selecting or specifying a roof system:

1. Choose the highest possible quality materials from an established manufacturer with an excellent reputation for integrity. CertainTeed has been manufacturing roofing materials for over 100 years.
2. Compare similar products. Evaluate the technical data provided by the manufacturer. Compare the weights, thicknesses and ASTM test results.
3. Remember, the money saved today on a low cost roofing system can be more than offset by the need to reroof sooner as the result of poor performance leading to leakage or premature failure.
4. Consider the manufacturer's warranty. The length of the warranty term (in years) helps gauge the superiority of the system selected. Generally, the longer the warranty, the better the system. Is a guarantee which covers not only the material but also the contractor's workmanship available for the roof system selected?
5. Property value. Is the manufacturer's warranty transferable to a new building owner?
6. How committed is the roofing material manufacturer willing to be? Does the manufacturer, as an option to the owner, have an approved contractor program in place? If an enhanced warranty that includes workmanship is selected, will the manufacturer inspect the roof project? With CertainTeed, the answer to all of these questions is yes.
7. Consider energy costs. Keep in mind that white mineral surfaced cap sheets, light colored gravel surfacing or roofs coated with reflective roof coating will help reduce interior cooling costs. Consider a CertainTeed cap sheet with CoolStar™ reflective coating.
8. Choose a system manufacturer. CertainTeed provides the key elements of the roofing system — insulation, adhesives and coatings, membranes and fasteners.
9. Consider building code requirements. Many local and state governments have specific guidelines for specifying roof systems.

**BUR (Built-Up Roofing)**

PRODUCT NAME	DESCRIPTION	SPECIFICATIONS				
		Application Method*	Thickness (Typical)	Weight per Roll	Coverage per Roll	ASTM Reference
<b>Base Sheets</b>						
Glasbase™ Base Sheet	Standard fiber glass base sheet	MF, HA, CA	1.0mm (40mils)	75 lbs.	300 sq. ft.	D4601, Type II, UL Type G2
Yosemite® Buffer Base Sheet	Heavy duty fiber glass base sheet; ideal for recover applications	MF, HA	2.8mm (110mils)	85 lbs.	100 sq. ft.	D3909, D4897, Type II, UL Type G3
Channel Vent™	Premium venting base sheet with embossed "channels" for venting moisture; fiber glass mat	MF, HA	3.0mm (120mils)	78 lbs.	100 sq. ft.	D4897, Type II, UL Type G2
<b>Interply Sheets</b>						
Flintglas® Type IV Ply Sheet	Standard fiber glass ply sheet	HA, CA	0.6mm (24mils)	38 lbs.	500 sq. ft.	D2178, Type IV, UL Type G1
Flintglas® Type VI Premium Ply Sheet	Heavier, premium fiber glass ply sheet	HA, CA	0.8mm (32mils)	48 lbs.	500 sq. ft.	D2178, Type VI, UL Type G1
No. 15 Perforated Felt	Standard organic ply sheet	HA	0.8mm (32mils)	55 lbs.	400 sq. ft.	D226, Type I, UL Type 15
<b>Cap Sheets</b>						
Flintglas® Mineral Cap Sheet	Fiber glass cap sheet for use over organic or fiber glass base and interply combinations	HA, CA	3.0mm (120mils)	78 lbs.	100 sq. ft.	D3909, UL Type G3
Flintglas® Cap Sheet with CoolStar™	Mineral surfaced fiber glass cap sheet with reflective CoolStar™ coating	HA, CA	3.0mm (120mils)	83 lbs.	100 sq. ft.	D3909

\*Application Methods:  
 MF = Mechanically Fastened  
 HA = Hot Asphalt  
 CA = Cold Asphalt  
 TA = Torch Applied  
 SA = Self-Adhering

**APP Modified Bitumen**

PRODUCT NAME	DESCRIPTION	SPECIFICATIONS				
		Application Method*	Thickness (Typical)	Weight per Roll	Coverage per Roll	ASTM Reference
<b>Interply Sheets</b>						
Flintlastic® STA	Standard smooth surfaced polyester APP; first ply in 2-ply systems or as cap with suitable coating	TA	4.0mm (160mils)	87 lbs.	100 sq. ft.	D6222, Grade S, Type I
Flintlastic® STA Plus	Premium, thicker, smooth surfaced polyester APP; first ply in 2-ply systems or as cap with suitable coating	TA	4.5mm (180mils)	100 lbs.	100 sq. ft.	D6222, Grade S, Type I
<b>Cap Sheets</b>						
Flintlastic® STA	Premium, thicker, smooth surfaced polyester APP; first ply in 2-ply systems or as cap with suitable coating	TA	4.0mm (160mils)	87 lbs.	100 sq. ft.	D6222, Grade S, Type I
Flintlastic® STA Plus	Premium, thicker, smooth surfaced polyester APP; first ply in 2-ply systems or as cap with suitable coating	TA	4.5mm (180mils)	100 lbs.	100 sq. ft.	D6222, Grade S, Type I
Flintlastic® GTA	Standard polyester mineral surfaced APP cap sheet	TA	4.2mm (168mils)	105 lbs.	100 sq. ft.	D6222, Grade G, Type I
Flintlastic® GTA with CoolStar™	Standard polyester mineral surfaced APP cap sheet with reflective CoolStar™ coating	TA	4.2mm (168mils)	110 lbs.	100 sq. ft.	D6222, Grade G, Type I
Flintlastic® GTA-FR	Polyester mineral surfaced APP cap sheet with fire retardant additives	TA	4.2mm (168mils)	105 lbs.	100 sq. ft.	D6222, Grade G, Type I
Flintlastic® GTA-FR with CoolStar™	Polyester mineral surfaced APP cap sheet with fire retardant additives and reflective CoolStar™ coating	TA	4.2mm (168mils)	110 lbs.	100 sq. ft.	D6222, Grade G, Type I
White Diamond GTA	Polyester APP cap sheet with fine particle surfacing	TA	4.0mm (160mils)	95 lbs.	100 sq. ft.	D6222, Grade G, Type I
Flintlastic® White Diamond GTA with CoolStar™	Polyester APP cap sheet with fine particle surfacing and reflective CoolStar™ coating	TA	4.0mm (160mils)	100 lbs.	100 sq. ft.	D6222, Grade G, Type I
APP Torch	APP modified roofing membrane	TA	3.4mm (135mils)	82 lbs.	100 sq. ft.	





**SBS Modified Bitumen**

PRODUCT NAME	DESCRIPTION	SPECIFICATIONS				
		Application Method*	Thickness (Typical)	Weight per Roll	Coverage per Roll	ASTM Reference
<b>Base and Interply Sheets</b>						
Flexiglas™ Base Sheet	SBS modified, fiber glass base sheet	HA, CA, MF	1.2mm (48mils)	90 lbs.	300 sq. ft.	D4601, Type II
Flexiglas™ FR Base Sheet	Premium fire resistant, SBS modified fiber glass base sheet	HA, CA, MF	2.3mm (92mils)	90 lbs.	150 sq. ft.	D4601, Type II, D6163, Grade S, Type I
Flintlastic® FR Base T Sheet	Premium fire resistant, SBS modified bitumen, coated fiber glass base sheet	TA, MF	3.0mm (120mils)	81 lbs.	100 sq. ft.	D4601, Type II, D6163, Grade S, Type I
Poly SMS™ Base Sheet	SBS modified, polyester base sheet;	HA, CA, MF	2.0mm (80mils)	90 lbs.	200 sq. ft.	D4601, Type II
Ultra Poly SMS™ Base Sheet	Premium heavyweight SBS modified, polyester base sheet	HA, CA, MF	3.7mm (148mils)	90 lbs.	100 sq. ft.	D6164, Grade S, Type I
Black Diamond™ Base Sheet	Self-adhering, SBS modified, fiber glass base sheet (for noncombustible decks) with fine particle surfacing	SA	1.5mm (60mils)	78 lbs.	200 sq. ft.	D1970
All Weather/Empire™ Base Sheet	Heavyweight, SBS modified, fiber glass base sheet, use as tile underlayment	MF, HA, CA	1.8mm (70mils)	70 lbs.	200 sq. ft.	D4601, Type II

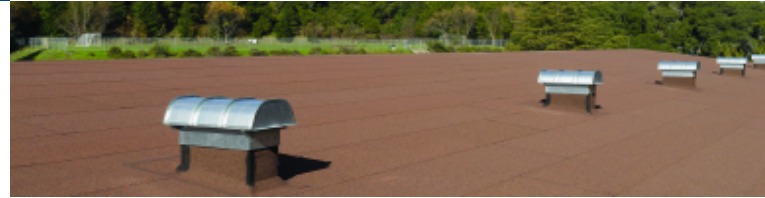
\*Application Methods:  
 MF = Mechanically Fastened  
 HA = Hot Asphalt  
 CA = Cold Asphalt  
 TA = Torch Applied  
 SA = Self-Adhering

**SBS Modified Bitumen**

PRODUCT NAME	DESCRIPTION	SPECIFICATIONS				
		Application Method*	Thickness (Typical)	Weight per Roll	Coverage per Roll	ASTM Reference
<b>Cap Sheets</b>						
Flexiglas™ Premium Cap Sheet 960	Heavy duty SBS modified, fiber glass mineral surfaced cap sheet	HA, CA	4.0mm (160mils)	100 lbs.	100 sq. ft.	D6163, Grade G, Type I
Flexiglas™ Premium Cap Sheet 960 with CoolStar™	Heavy duty SBS modified, fiber glass with reflective CoolStar™ coating	HA, CA	4.0mm (160mils)	105 lbs.	100 sq. ft.	D6163, Grade G, Type I
Flintlastic® FR Cap Sheet	Mineral surfaced, fire-resistant, SBS modified bitumen, fiber glass cap sheet	HA, CA	3.5mm (140mils)	90 lbs.	100 sq. ft.	D6163, Grade G, Type I
Flintlastic® FR Cap Sheet with CoolStar™	Mineral surfaced, fire resistant, SBS modified bitumen, fiber glass cap sheet with reflective CoolStar™ coating	HA, CA	3.5mm (140mils)	95 lbs.	100 sq. ft.	D6163, Grade G, Type I
Flintlastic® FR Cap T	Mineral surfaced, fire-resistant, SBS modified bitumen, fiber glass cap sheet	TA	4.0mm (140mils)	100 lbs.	100 sq. ft.	D6163, Grade G, Type I
Flintlastic® FR Cap T with CoolStar™	Mineral surfaced, fire-resistant, SBS modified bitumen, fiber glass cap sheet with reflective CoolStar™ coating	TA	4.0mm (160mils)	105 lbs.	100 sq. ft.	D6163, Grade G, Type I
Flintlastic® FR-P	Fire-resistant, SBS modified, polyester, mineral surfaced cap sheet	HA, CA	4.2mm (168mils)	105 lbs.	100 sq. ft.	D6164, Grade G, Type I
Flintlastic® FR-P with CoolStar™	Fire-resistant, SBS modified, polyester, mineral surfaced cap sheet with reflective CoolStar™ coating	HA, CA	4.2mm (168mils)	110 lbs.	100 sq. ft.	D6164, Grade G, Type I
Flintlastic® Premium FR-P	Premium, fire-resistant, SBS modified, heavyweight polyester mineral surfaced cap sheet	HA, CA	4.2mm (168mils)	105 lbs.	100 sq. ft.	D6164, Grade G, Type II
Flintlastic® Premium FR-P with CoolStar™	Premium, fire-resistant, SBS modified, heavyweight polyester mineral surfaced cap sheet with reflective CoolStar™	HA, CA	4.2mm (168mils)	110 lbs.	100 sq. ft.	D6164, Grade G, Type II
Flintlastic® GMS	Mineral surfaced, SBS modified, polyester cap sheet	HA, CA	4.0mm (160mils)	97 lbs.	100 sq. ft.	D6164, Grade G, Type I
Flintlastic® GMS with CoolStar™	Mineral surfaced, SBS modified, polyester cap sheet with reflective CoolStar coating	HA, CA	4.0mm (160mils)	102 lbs.	100 sq. ft.	D6164, Grade G, Type I
Flintlastic® Premium GMS	Premium, SBS modified, heavyweight polyester mineral surfaced cap sheet	HA, CA	4.2mm (168mils)	105 lbs.	100 sq. ft.	D6164, Grade G, Type II
Flintlastic® Premium GMS with CoolStar™	Premium, SBS modified, heavyweight polyester mineral surfaced cap sheet with reflective CoolStar™ coating	HA, CA	4.2mm (168mils)	110 lbs.	100 sq. ft.	D6164, Grade G, Type II
Flintlastic® GTS	SBS modified, heavyweight polyester mineral surfaced cap sheet	TA	4.5mm (180mils)	90 lbs.	75 sq. ft.	D6164, Grade G, Type II
Flintlastic® GTS with CoolStar™	Premium, SBS modified, heavyweight polyester mineral surfaced cap sheet with reflective CoolStar™ coating	TA	4.5mm (180mils)	94 lbs.	75 sq. ft.	D6164, Grade G, Type II
FlintClad™	Premium, SBS modified, polyester cap sheet with foil facing	TA	4.0mm (160mils)	95 lbs.	100 sq. ft.	D6298



## FLINTLASTIC® SA



### Self-Adhering SBS Modified Bitumen Roofing System

CertainTeed Flintlastic® SA is a premium, self-adhering SBS modified bitumen roofing system comprising a nailable base or self-adhering ply base with a top surface designed to accept self-adhering membrane, a self-adhering mid ply and a self-adhering cap sheet. The Flintlastic SA product line is manufactured with premium quality materials, and the roof system specifications have been engineered to provide roofs that offer excellent longevity and performance.

The complete Flintlastic SA roofing system offers a number of advantages:

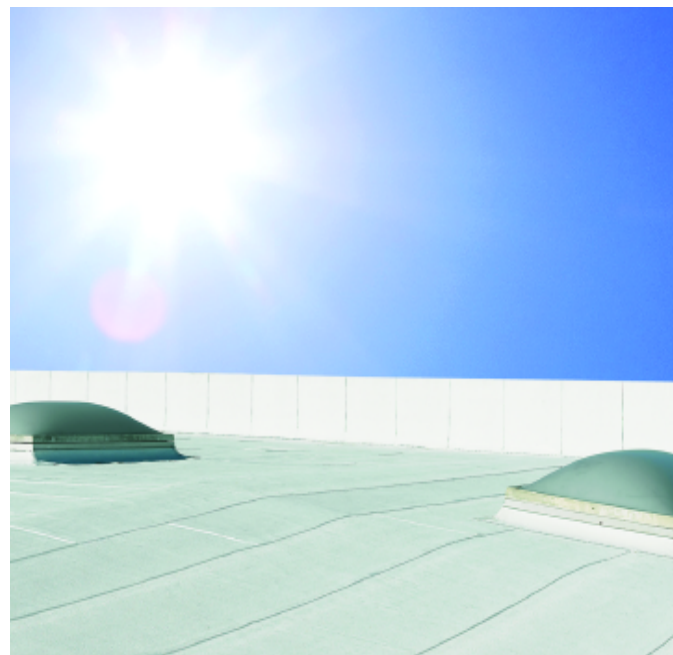
- Ease of application
- No hot asphalt or torches needed for installation
- Minimal equipment requirements
- Cleaner work environment

In addition, Flintlastic SA Cap Sheet is available in a variety of colors that complement the most popular CertainTeed shingle colors, for use on carports, porches and other residential low slope applications.

Flintlastic SA products can be used in various system configurations, depending on the roof requirements. For small projects, such as decks, additions and porches, two-ply systems with Flintlastic SA NailBase or Flintlastic SA PlyBase, and Flintlastic SA Cap Sheet may be appropriate (in conjunction with FlintFlash™ SA flashing membrane, as specified by CertainTeed). For larger roofs and commercial applications, three-ply systems consisting of Flintlastic SA NailBase or Flintlastic SA PlyBase covered with Flintlastic SA Mid Ply and Flintlastic SA Cap Sheet are recommended. Roofs and decks must have proper drainage. Refer to the CertainTeed Commercial Roof Systems Manual for product data sheets and complete specification details. Product application must comply with CertainTeed installation instructions.

### Cool Roof Solutions from CertainTeed

As new building standards are introduced, CertainTeed is proud to be at the forefront of technology. CertainTeed's CoolStar™ surfaced products are rated by the Cool Roof Rating Council (CRRC), are initial California Title 24 compliant and meet ENERGY STAR® requirements.



#### CoolStar™ Characteristics

Durable, flexible, acrylic-based coating, highly reflective, brilliant white color.

#### Saves energy, time and money

Factory-applied reflective coating, hassle-free installation – once you cap it, it's finished.

#### Excels in performance and durability

High-quality roof with all the advantages of a redundant system (including UL Class A fire resistance), easily repaired and maintained.



### Self-Adhering SBS Modified Bitumen

PRODUCT NAME	DESCRIPTION	SPECIFICATIONS				
		Application Method	Thickness (Typical)	Weight per Roll	Coverage per Roll	ASTM Reference
Flintlastic® SA NailBase	SBS modified, fiber glass base sheet (not self-adhering) with a unique permanent top surface film	MF, HA	1.5mm (60mils)	84 lbs.	200 sq. ft.	D4601, Type II
Flintlastic® SA PlyBase	Self-adhering, SBS modified, fiber glass base sheet with a unique permanent top surface film	SA	1.5mm (60mils)	88 lbs.	200 sq. ft.	D4601, Type II, D1970
Flintlastic® SA Mid Ply	Self-adhering, SBS modified, polyester/fiber glass scrim combination mat reinforced, base sheet with a unique permanent top surface film	SA	3.0mm (120mils)	68 lbs.	100 sq. ft.	D6164, Grade S, Type I
Flintlastic® SA Cap	Self-adhering, SBS modified, polyester/fiber glass scrim combination mat reinforced, cap sheet with mineral surfaced cap sheet	SA	4.0mm (160mils)	97 lbs.	100 sq. ft.	D6164, Grade G, Type I
Flintlastic® SA Cap with CoolStar™	Self-adhering SBS modified, polyester/fiber glass scrim combination mat reinforced, cap sheet with reflective CoolStar coating	SA	4.0mm (160mils)	102 lbs.	100 sq. ft.	D6164
Flintlastic® SA Cap FR	Self-adhering, fire-resistant, SBS modified, polyester/fiber glass scrim combination mat reinforced, mineral surfaced cap sheet	SA (160mils)	4.0mm	97 lbs.	100 sq. ft. Type I	D6164, Grade G, Type I
Flintlastic® SA FR Cap with CoolStar™	Self-adhering, fire-resistant, SBS modified, polyester/fiber glass scrim combination mat reinforced, mineral surfaced cap sheet with reflective CoolStar coating	SA	4.0mm (160mils)	102 lbs.	100 sq. ft.	D6164, Grade G, Type I, UL 2218, Class 4, IR
FlintFlash® SA	Self-adhering SBS modified bitumen, pre-cut flashing	SA	3.0mm (120mils)	17 lbs.	25 or 50 sq. ft.	D6164, Grade S, Type I

\*Application Methods:

MF = Mechanically Fastened

HA = Hot Asphalt

CA = Cold Asphalt

TA = Torch Applied

SA = Self-Adhering



## Roofing Insulation

PRODUCT NAME	DESCRIPTION	SPECIFICATIONS
FlintBoard™ ISO	Features a closed-cell polyiso core laminated to heavy, black (non-asphaltic), fiber-reinforced felt facers	ASTM C1289-95, Type II
FlintBoard™ ISO-T	Features a tapered design to promote positive drainage	ASTM C1289-95, Type II
FlintBoard™ ISO Plus	Composite roof insulation, with foam core laminated to 1/2" perlite with a fiber-reinforced felt facer	ASTM C1289-95, Type II or Type III
FlintBoard™ ISO-T Plus	Composite roof insulation with a tapered design to promote positive drainage	ASTM C1289-95, Type II or Type III
FlintBoard™ ISO Cold	Featuring a heavy duty facer designed specifically for single ply, COLD applied hybrid BUR and SBS modified bitumen roof systems	ASTM C1289-95, Type II
FlintBoard™ CV	Cross-ventilating design specifically for use over sloped unventilated roof decks	ASTM C1289-95, Type V
FlintBoard™ Pre-Cut Crickets	Pre-packaged in triangular sections only (not the entire cricket), each with a right angle to align with CertainTeed's standard 4' x 4' tapered FlintBoard insulation panels	ASTM C1289-95, Type II

## Fasteners

PRODUCT NAME	DESCRIPTION
FlintFast™ #12	Features sharp drill point and tapered wedge entry; corrosion protection and back-out resistance; available in lengths from 1-5/8" to 8"
FlintFast™ #14	Heavy duty drill point fasteners with tapered wedge entry; low-profile head, deep threads; available in lengths from 1-1/2" to 12"
3" Galvalume Metal Insulation Plates	Concave, reinforced circular design with low profile; designed for outer perimeter strength with recess for screw head

## Primers

PRODUCT NAME	DESCRIPTION	SPECIFICATIONS
FlintPrime™	A general purpose, penetration asphalt primer used for the preparation of all types of surfaces prior to application of hot or cold asphalt coatings.	Meets or exceeds ASTM D41, Fed. Spec. SA-A-701, AASHTO M-116, Miami-Dade Approved
FlintPrime™ LV	A superior prime coat, formulated with low-VOC penetrating solvents that promote the adhesion of roofing materials to the roof surface. An ideal base coat before applying asphalt peel-and-stick membranes. Seals masonry, roofing surfaces and metal.	Meets or exceeds ASTM D41, Fed. Spec. SA-A-701, AASHTO M-116, Miami-Dade Approved
FlintPrime™ SA	A water-based polymer modified primer for use with self-adhering modified bitumen roofing membrane systems such as Flintlastic A. Designed to enhance adhesion of self-adhering modified bitumen membranes.	

## Adhesives

PRODUCT NAME	DESCRIPTION	SPECIFICATIONS
FlintBond™	A cold applied, high strength SBS polymer modified asphalt adhesive that provides excellent adhesion and elongation properties. Available in brush grade, trowel grade, and caulk grade. Asbestos-free.	Meets or exceeds ASTM D3019 Type III, U.L. Listed, File #R11656, Control #63P6, Miami-Dade Approved

## Coatings

PRODUCT NAME	DESCRIPTION	SPECIFICATIONS
FlintCoat™-A PLUS	Single-component, SBS rubber modified asphalt, specially formulated with aluminum pigment to be used as a reflective elastomeric coating with modified bitumen membranes, BUR and primed metal surfaces.	U.L. Listed, File #R11656, Control #63P6, ENERGY STAR®
FlintCoat™-A 300	Made of selected asphalts and pigment flakes of pure aluminum, blended with mineral fibers and refined solvents for heavy duty performance capability. Aluminum flakes form a reflective metallic shield over the base material to create a self-protecting roof coating with long-lasting moisture- and heat-resistant properties.	Meets or exceeds ASTM D2824, Type II, ASTM D3805, ASTM D962 Type II, U.L. Class A Listed, File #R11656, Control #63P6, ENERGY STAR®
FlintCoat™-A 150	Made of selected asphalts and pigment flakes of pure aluminum, blended with mineral fibers and refined solvents for heavy duty performance capability. Aluminum flakes form a reflective metallic shield over the base material to create a self-protecting roof coating with long-lasting moisture- and heat-resistant properties.	U.L. Class A Listed, File #R11656, Control #63P6; Miami-Dade Approved
FlintCoat™-A NF	Non-fibered aluminum roof coating formulation of selected asphalts, refined solvents and fine aluminum flakes that form a reflective metallic shield over the base material, creating a self-protecting roof coating with long-lasting moisture- and heat-resistant properties.	UL Class A Listed, File #R11656, Control #63P6, Miami-Dade Approved
FlintCoat™-W	A copolymer elastomeric emulsion exterior protective coating that provides excellent protection, appearance, mildew resistance, color stability, weatherability and flexibility.	U.L. Listed, File #R11656, Control #63P6, ENERGY STAR®
FlintCoat™-E	Emulsion roof coating made with refined asphalt, bentonite clay, emulsifiers and fibers for brush or spray application on smooth surface and metal roofs. Withstands variations in temperature and weather, and resists the absorption of exterior moisture. No odor or fumes.	Meets or exceeds ASTM D1227 Type II, Class I, ASTM D1187 Type I and II, U.L. Listed, File #R11656, Control #63P6, FM Approved, Miami-Dade Approved

## Repair

PRODUCT NAME	DESCRIPTION	SPECIFICATIONS
FlintPatch™	Asbestos-free wet/dry rubberized flashing cement, compounded with a blend of rubber-reinforced asphalt, mineral fibers and refined solvents in a heavy, pliable consistency for ease of application by trowel.	Meets or exceeds ASTM D4586 Type I and ASTM D3409, Fed. Spec C-153 Type 1 (Asbestos Free), Miami-Dade Approved