



WORLD LEADER IN FLEXIBLE SPACE MANAGEMENT



# PARTITIONS

OPERABLE

ACCORDION

GLASSWALL

PORTABLE



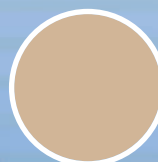
## THE NEXT GENERATION OF FLEXIBILITY

*As the world's leading manufacturer of operable, accordion, portable and glasswall partitions, we have models for every budget and need. And, for facilities with special requirements, our engineering department can make recommendations or custom design partitions.*

**Facility managers and building owners** can rest easy with Hufcor. If your operable partition system is damaged or it's simply time to remodel, Hufcor has an extensive network of trained service technicians who offer repair and service. Extended warranties and service contracts are also available to add life and functionality to your system.

## OPERABLE PARTITIONS

**Hufcor's operable partitions** are simply the most versatile and aesthetically pleasing operable wall constructed today. Operable Partitions (also known as Airwalls® brand operable partitions) are a series of panels suspended from tracks. They are available with or without vertical edge trim, in heights to 40'5" [12.31m], are sound rated and offer decorative options. The standard panel finish is factory-applied vinyl, however, a wide array of optional surfaces is available. The panels may also be manufactured unfinished for on-site decoration.



Lamb's Wool



Brown



Gray

### Three Trim Colors – Standard

Operable partitions are available in three standard color trim options – Lamb's Wool, Brown or Gray.

Four-finger, multiple contact sweep seals

"Quick-Set" top and bottom mechanical seals

Standard 1" top and 2" bottom clearances (deeper bottom clearances optional on single 4" thick panels)

Welded, heavy-duty 16-gauge steel frame for 3" and 4" thick panels

Gypsum and steel acoustical faces with tackable surface options

Standard vinyl, fabric and carpet finishes

Protective vertical edge trim or optional monolithic edges on 3" and 4" models

Deep nesting, interchangeable vertical bullnose/astragal system

Waist-high seal activator for fast, easy setup



# GLASSWALL CLEARLY VISIONARY

Hufcor offers a complete line of movable glass partitioning systems that include frameless, timber-framed, acoustic and specialty lines.

Our lines blend form and function to offer attractive space division without visual barriers. Hufcor movable glasswalls allow natural light to flood an interior space without compromising the value of flexible spaces in office buildings, churches, shopping centers, restaurants, sports suites, dealership showrooms, bank lobbies or hotel lobbies.



# ACCORDION DOORS FOLDING PARTITIONS

Hufcor partitions are a terrific choice for fast space division. You simply pull the door across the opening. Hufcor's semi-rigid laminated covers withstand impact

and keep their clean, crisp lines. A selection of sound-rated models is available. The standard finish is factory-applied vinyl. Carpet, fabric or custom finishes may also be ordered.



# UNISPAN® SELF-SUPPORT SYSTEM

Unispan is ideal for buildings with inadequate overhead support. It consists of a horizontal truss and two support posts that support a partition independent of the building. Unispan is an excellent choice for schools or commercial buildings to accommodate changing tenant needs.



During breaks or between semesters, entire schools can be reorganized to meet new curriculum needs using Unispan.

# CHOOSE HUF COR

AND CHOOSE PARTITIONS THAT ARE KNOWN  
WORLDWIDE FOR QUALITY AND VALUE.



**Mobile Partitions** Mobile partitions are part-high sight dividers on casters. The panels are all connected and unfold easily to create rooms within rooms, display areas or private areas. The panel faces are sound retardant and covered in attractive fabric.

**Leasing Program** Many customers have the option of buying their partitions through a lease program. Monthly payments instead of a lump sum payment may help with cash flow or provide financial benefits. Because every tax and financing situation is different, check with your accountant to determine the best payment plan. Contact your Hufcor representative to determine if leasing is available for your project.

**Worldwide Distribution** Hufcor products are available from local installing distributors throughout the United States. Outside the United States, Hufcor products are manufactured in Australia, Brazil, Canada, China, Finland, France, Germany, Great Britain, Japan, Malaysia, Mexico, Russia, South Africa, Spain and the United Arab Emirates. Hufcor partitions are also available through a network of distributors located throughout the world. Check our website or call for the name of the nearest representative.

**Renovations and Repair** Renovations give your partitions a new look and new life. Whether you want to re-cover them to match a new décor, or if they just need repair, we can help. Not only do we retrofit Hufcor products, we often retrofit those manufactured by others. Call your Hufcor local representative for a free analysis of your needs. Ask for genuine Hufcor parts – your assurance of quality and performance.

**Hufcor Custom Delivery** When you need to pinpoint the delivery date and time (which is often critical for renovation projects), we can do it. Our fleet of custom-equipped vans delivers your order on time and without the damage that can occur when shipping by other methods. When you need it in a hurry, we offer various “Quick Ship” programs to meet your needs. Contact your Hufcor distributor for details.

**The Hufcor Commitment To Green Manufacturing, Sustainability and LEED™** Hufcor is committed to being an industry leader when it comes to protecting the environment by reducing pollutants and minimizing our environmental impact on air, water and land. For more than ten years, Hufcor has utilized a “Green” approach to manufacturing and energy consumption and has increased the percentage of materials that we recycle, reuse, repair, restock or return for salvage. Today, the

Hufcor commitment and progress toward Green manufacturing is greater than ever, as we continue to develop standards that support various LEED™ (Leadership in Energy and Environmental Design) points to assist the achievement of LEED™ certification goals.

**www.hufcor.com** Visit Hufcor’s website for our latest product innovations. The site also includes CAD details and specs that can be downloaded as well as an extensive photo album. The “Acoustics” and “How To Buy a Partition” sections will be helpful for purchasing operable partitions.



### IT'S ALL IN THE BOOK

More details on all Hufcor products are available in the Architectural Product Manual. Call your local rep today to receive a complimentary copy.



#### Worldwide Headquarters

PO Box 591 / 2101 Kennedy Road, Janesville, WI 53547  
Toll-Free: 800-542-2371, ext. 214 Telephone: 608-756-1241  
Fax: 608-758-8253 E-mail: info@hufcor.com  
Web: www.hufcor.com

#### Additional U.S. Manufacturing Facilities

##### Hufcor Airwall® Inc.

PO Box 1149 / 8739 E. Artesia Blvd., Bellflower, CA 90707  
Telephone: 562-634-3116 Fax: 562-630-8203  
E-mail: admin@hufcorairwall.com

see us at  
**Sweets.com**



\*USGBC and related logo is a trademark owned by the U.S. Green Building Council and is used by permission.

The quality systems of Hufcor’s U.S. manufacturing facilities are registered to the ISO 9001 standards. Hufcor has a program of continuous product improvement. As a result, some products may be modified from those represented in this catalog.

#### Hufcor Partition U.S. Patents:

2,861,660	3,056,193	3,223,147	3,295,257
3,295,588	3,450,185	3,638,376	3,755,968
3,783,930	3,879,799	3,042,960	4,014,137
5,181,296	5,230,123	5,406,676	5,481,834
5,564,759	6,112,466	6,167,937	

F-2009 FOE MTH  
Printed in U.S.A.