

World Leader in Flexible Space Management



# PARTITIONS



OPERABLE

GLASSWALL

ACCORDION

PORTABLE



**You need innovative ways to put your building's space to work.**

# Choose Hufcor

and choose partitions that are known worldwide for quality and value.

**Customized Products.** Although we have the most comprehensive selection of operable, glasswall and accordion partitions, occasionally our "standard" products won't meet your needs. Our talented engineers can design custom partitions for a specific application.

**Quality Assurance.** Hufcor is the first U.S. manufacturer of operable walls and accordion partitions to achieve ISO 9001 registration. Regular check-ups by our registration authority make certain we adhere to the ISO guidelines and requirements.

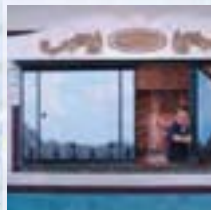
**Partitions must control sound.** We test our products in our sound laboratory to make certain they meet or exceed our published acoustical ratings. The laboratory is certified by the U.S. Dept. of Commerce, National Institute of Standards and Technology, under the National Voluntary Laboratory Accreditation Program (NVLAP); and, like our ISO certification, we undergo regular inspection to make certain we adhere to their strict regulations. And, although it isn't required of us, we also hire an independent consultant to witness and verify any test results.

**Worldwide Availability.** Hufcor's headquarters are located in Janesville, Wisconsin, USA. We operate U.S. manufacturing facilities in Janesville and Bellflower, California. In addition, Hufcor products are manufactured under license in Australia, Brazil, Canada, China, Finland, France, Germany, Great Britain, Japan, Malaysia, Mexico, Russia, South Africa, Spain, and the United Arab Emirates. Hufcor products may be purchased through a network of authorized Distributors located throughout the world. Check our website or call for the name of your nearest representative.

**Renovation and Repair.** Not only do we provide new products, we also offer retrofit service for Hufcor products and those manufactured by others. Contact your local Hufcor representative for a free analysis of your needs.

**Leasing Program.** You may wish to consider the option of buying partitions through a lease program. Check with your accountant to see if leasing vs. a lump sum payment will provide you with financial benefits.

**Hufcor Custom Delivery.** If you need to pinpoint the delivery date and time (which is often critical for renovation projects), we can do it. Our fleet of vans delivers your order on time and without damage that can occur when shipping by other methods.



a

[a] This busy banquet facility uses short partitions to close off the bar when it is not needed. The vinyl faces were hand painted to match the permanent walls.



b

[b] Beautiful wood wainscot and chair rails were added to the panels to match the perimeter walls.



c

[c] Dividing auditoriums and meeting rooms with stairs is not a problem for Hufcor. Our bottom seals are modified to seal perfectly against each step.



d

[d] Used in a coliseum, the windows in these panels allow security to observe the crowds. The louvers disperse air pressure when the large dock doors are opened.

FOR MORE INFORMATION VISIT  
[www.hufcor.com](http://www.hufcor.com)

# I N N O V A T I O N



a

**[a]** The partition acoustically separates the board room of this large U.S. charitable headquarters. Hufcor worked with the designer to provide custom steel faces to achieve the desired design affect. The partition matches the adjacent wall for design continuity.



b

**[b]** Frosted glass in these acoustical glasswalls provide visual privacy yet allows light to shine in.



f

**[c]** Wood veneer that matches the perimeter walls was applied on-site to the operable panels in this beautiful conference facility. The panels were custom engineered to seal against the steps and provide acoustic separation when two meetings are scheduled.



c

**[d]** This Michigan church uses a combination of operable panels and accordion folding doors to create classrooms or meeting rooms when the gymnasium is in use. The partitions may all be stored out of sight in pockets when the entire space is needed.



g

**[e]** Single panels and an extensive grid of track allow this museum to display the artwork to its best advantage. Customized panels have sturdy faces to support the paintings and special legs to secure the panels in place.



d

**[f]** The beautifully detailed wood veneer faces on these movable panels match the perimeter walls in this upscale restaurant.



h

**[g]** The Premier™ Bi-Fold Doors at the Boston Children's Museum helped the facility to achieve its LEED certification. The doors are glazed with 1" double pane glass, trapping the heat of the sun to reduce winter heating and summer cooling costs. The Museum can open the large doors to take advantage of mild weather.



e

**[h]** Accordion doors are the fastest, easiest method for separating space. Simply pull the door across the opening and latch. Optional posts and tracks allow this facility to create several rooms with intersecting doors.



i

**[i]** The meeting rooms in this busy corporation are always in demand. The Hufcor paired panels can be quickly moved into position to accommodate simultaneous meetings.



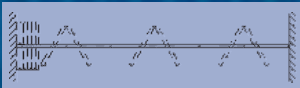
j

**[j]** The busy Kuala Lumpur Convention Center uses Hufcor partitions in their exhibition and meeting rooms. The panels are fitted with custom designed fabric and mirrors to coordinate with the perimeter walls.

YOU GET MORE WITH  
HUF COR

# PARTITION TYPES

**OPERABLE PARTITIONS** – (also described as Hufcor brand Airwalls®, movable walls, flat panels) are a series of panels suspended from tracks. When in place, the panels are similar in appearance to a permanent wall and the surfaces coordinate with the room décor. Hufcor sound-rated operables are available in paired, individual (omni-directional) and continuously hinged (train) configurations.



**Paired Panels** – For wall-to-wall division. Panels are hinged in pairs and are manually operated.

Completely close the opening or place panels along the track for use as display panels or sight dividers. Recommended for: classrooms, meeting rooms and training centers.



**Individual Panels** – (Omni-directional) Individual, single, manually-operated panels offer maximum room flexibility. The track

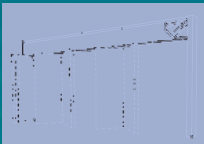
system enables panels to be set at angles and alternate locations. Curves and self-storing systems are available. Recommended for: religious facilities, school multi-use areas, hotel ballrooms and convention centers.



**Continuously Hinged** – (Train)

Panels are hinged together and move from wall to wall in a straight line for fast, easy set-up. Available for

manual or electric operation. Recommended for: hotel ballrooms and school gymnasiums.

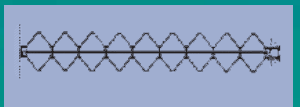


**UNISPAN™** – Unispan is a self-support system that allows the use of operable and accordion partitions in areas with inadequate overhead structure to suspend partitions. Bracing is needed for lateral support only.



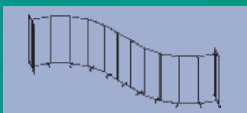
**PORTABLE PANELS** – These panels do not require a track. Panels are placed in a line to close an opening, to form rooms, or are used

individually as display panels, sight dividers or for traffic control. Recommended for: space division with medium sound control requirements. Great for separating smoking/non-smoking areas.



**ACCORDION PARTITIONS** – (or doors) provide fast space division. Simply pull away from the wall, stretch across the opening and latch. Add

switches, curves and posts to move partitions to alternate locations or to intersect with other accordions, operables or portables. Available in single doors or pairs. Recommended for: classrooms, meeting rooms and religious buildings.



**MOBILE PARTITIONS** – Mobile partitions are part-high dividers on casters. The panels are all connected and unfold to create a divider. Use in areas with

minimum sound control requirements. Recommended for religious facilities and hotel pre-function division.

# Product Guide

SUPPORT	STACK	CONFIG. <sup>1</sup>	UNIQUE FEATURE <sup>2</sup>
Overhead	Center	Pairs	Steel frame
			Steel frame
			Steel frame
			Steel frame
			Steel frame
			Steel frame/face/Fire Rated
			Steel frame
			Glass Panels - Frameless
			Glass Panels - Timber-framed
			Glass Panels - Acoustically Rated
	Side	Single (also referred to as Omni or Individual Panels)	Steel frame
			Steel frame
			Steel frame
			Steel frame
			Steel frame
			Steel frame/face/Fire Rated
			Steel frame/4" btm seal
			Steel frame/4" btm seal/Fire Rated
			Steel frame
			Steel frame/4" btm seal
			Glass Panels - Frameless
			Glass Panels - Timber-framed
			Glass Panels - Acoustically Rated
			Center
Steel frame			
Steel frame			
Steel frame			
Steel frame			
Steel frame			
Steel frame			
Steel frame			
Steel frame			
Steel frame			
	Accordion	Replaceable Covers	
Premier Bi-Fold	n/a	Vertical Pair	Vertical Outward Fold
Floor Support	Center & Side	Support System for Pairs & Single Panels	Track and partition system. Used with operables and accordions
Free Standing	No Stack	Portable	Unitized Individual Panels
	Folds	Mobile	Rolls on floor casters

## More About Hufcor...

**U.S. Owned & Operated with Worldwide Distribution** Hufcor is the world's leading manufacturer of operable partitions. Products are manufactured in two U.S. facilities and available from local distributors throughout the U.S. Outside the U.S. products are manufactured in 17 countries and may be purchased through a network of distributors worldwide.

**Warranty** Most Hufcor products are guaranteed against defects in materials and workmanship for two years. Our warranty covers all parts and their installation. Compare this warranty with others whose warranty covers only some parts.

**ISO Registration** Hufcor quality systems are registered to the ISO 9001 standards.

Hufcor offers an extensive selection of products. The Product Guide below lists standard product features; however, many products can be modified for special job site requirements.

SERIES	TOP SEALS		FLOOR SEALS <sup>2</sup>			VERT. TRIM	MAX. <sup>2</sup> HEIGHTS	MAX. WIDTH <sup>2</sup> FOR SINGLE OPENING	STC ACOUS. RATINGS
	FIXED	RETRACT	RETRACT	FIXED	AUTO				
632	std	opt	std	opt	opt	std/opt	24'3" [7.3m]	Unlimited	41-51
632	std	opt	std	opt	opt	std/opt	24'3" [7.3m]	Unlimited	41-51
632	std	opt	std	opt	opt	std/opt	24'3" [7.3m]	Unlimited	41-51
632	std	opt	std	opt	opt	std/opt	24'3" [7.3m]	Unlimited	41-51
642	opt	std	std	opt	n/a	std/opt	24'3" [7.3m]	Unlimited	41-54
642F	n/a	std	std	n/a	n/a	n/a	24'3" [7.3m]	Unlimited	51, 54
642	opt	std	std	opt	n/a	std/opt	24'3" [7.3m]	Unlimited	41-54
GL2	std	n/a	n/a	std	n/a	opt	10'5" [3.2m]	Unlimited	n/a
GT2	std	n/a	n/a	std	n/a	n/a	10'2" [3.0m]	Unlimited	n/a
GA2	std	n/a	opt	std	n/a	std	12'2" [3.7m]	Unlimited	44
631	std	opt	std	opt	opt	std/opt	24'3" [7.3m]	Unlimited	41-51
631	std	opt	std	opt	opt	std/opt	24'3" [7.3m]	Unlimited	41-51
631	std	opt	std	opt	opt	std/opt	24'3" [7.3m]	Unlimited	41-51
631	std	opt	std	opt	opt	std/opt	24'3" [7.3m]	Unlimited	41-51
641	opt	std	std	opt	n/a	std/opt	40'5" [12.3m]	Unlimited	41-54
641F	n/a	std	std	n/a	n/a	n/a	40'2" [12.2m]	Unlimited	51, 54
641	opt	std	std	n/a	n/a	std/opt	40'5" [12.3m]	Unlimited	41-54
641F	n/a	std	std	n/a	n/a	n/a	40'2" [12.2m]	Unlimited	51, 54
641	opt	std	std	opt	n/a	std/opt	40'5" [12.3m]	Unlimited	41-54
641	opt	std	std	n/a	n/a	std/opt	40'5" [12.3m]	Unlimited	41-54
GL1	std	n/a	n/a	std	n/a	opt	10'5" [3.2m]	Unlimited	n/a
GT1	std	n/a	n/a	std	n/a	n/a	10'2" [3.0m]	Unlimited	n/a
GA1	std	n/a	opt	std	n/a	std	12'2" [3.7m]	Unlimited	44
633E	std	n/a	std	opt	n/a	std/opt	28'3" [8.6m]	157'4" [47.9m]	28-51
633E	std	n/a	std	opt	n/a	std/opt	28'3" [8.6m]	157'4" [47.9m]	28-51
633E	std	n/a	std	opt	n/a	std/opt	28'3" [8.6m]	157'4" [47.9m]	28-51
643E	std	n/a	std	opt	n/a	std/opt	30'3" [9.2m]	119'11-5/8" [36.7m]	41-54
643E	std	n/a	std	opt	n/a	std/opt	30'3" [9.2m]	119'11-5/8" [36.7m]	41-54
643E	std	n/a	std	opt	n/a	std/opt	30'3" [9.2m]	119'11-5/8" [36.7m]	41-54
643E	std	n/a	std	opt	n/a	std/opt	30'3" [9.2m]	119'11-5/8" [36.7m]	41-54
633	std	n/a	n/a	std	n/a	std/opt	12'3" [3.7m]	40'11-1/8" [12.4m]	41-51
633	std	n/a	n/a	std	n/a	std/opt	12'3" [3.7m]	40'11-1/8" [12.4m]	41-51
I500-4500, manual, opt elec	std	n/a	n/a	std	n/a	n/a	17'0" [5.2m]	40' [12.1m]	15-45
BF2	n/a	n/a	n/a	n/a	n/a	n/a	Sized per Job	Sized per Job	n/a
U900/U901	n/a	n/a	n/a	n/a	n/a	n/a	Determined by weight of 400 lbs. per panel	39'9" [12.1m]	n/a
PCS	n/a	std	adjustable	n/a	n/a	std	14'2-1/4" [4.3m]	Unlimited	33-40
R100	n/a	n/a	n/a	n/a	n/a	std	7'6" [2.3m]	25' [762cm] height is limited	n/a

<sup>1</sup> See sidebar for additional information regarding configuration. <sup>2</sup> Information shown is "standard." However, many products and features may be altered to meet specific job site requirements. Contact your Hufcor representative for assistance. n/a = not available **Note:** Metric dimensions are in [ ]

**Suspension Systems** Hufcor track systems have been life-cycle tested for approximately 10 years of use and our single electric motor units are UL rated.

**Acoustics** Acoustically rated partitions have been tested in accordance with ASTM E90, unlike some manufacturers that only test a single element and not a complete system.

**Decorative Finishes** We offer a wide array of factory-applied standard vinyl face finishes; however, optional carpet, fabric, wood veneer, high pressure laminate and other custom finishes or trim colors are available on many models. Panels may also be unfinished for field decoration.

**Custom Designs** Most products may be modified for specific design requirements. Examples include: notched panels to fit around soffits, special sized panels to seal against sloped or stair-stepped floors, and window inserts.

**Continuing Education** We offer two Continuing Education Programs which qualify for AIA/CES Learning Units: How to Optimize the Acoustical Performance of Rooms with Operable Partitions and An Introduction to Glasswall Partitions. Contact your local Hufcor Distributor to schedule a presentation.



# OPERABLE PARTITIONS FEATURES

Four-finger multiple contact sweep seals and/or 1" Quick-Set top retractable seal

Gypsum and or steel acoustical substrate

Price includes Hufcor standard vinyl, but design accommodates wide array of face finishes including fabric, carpet, high-pressure laminate, wood veneers

Welded, heavy-duty 16 gauge steel frame for both 3" and 4" thick panels

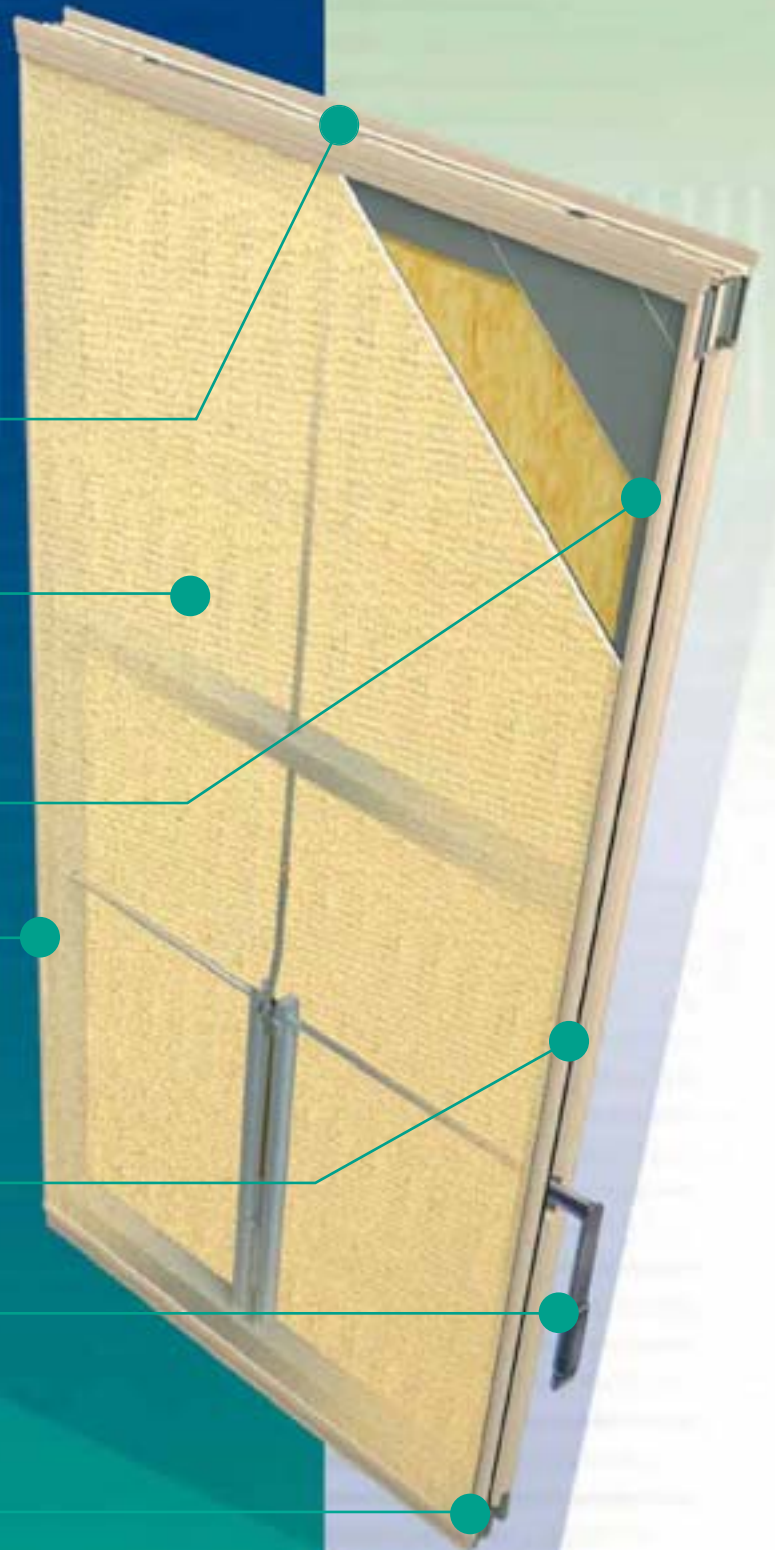
Protective vertical edge trim or optional monolithic edges on both 3" and 4" models

Three standard panel trim color selections

Deep nesting vertical bullnose/astragal with compression style vertical seals

Removable waist high handle extends/retracts mechanical seals.

"Quick-Set" bottom retractable seal with 2" clearance (deeper bottom clearance optional on 4" thick individual panels)



### left to right:

*This upscale hotel uses Hufcor omni-directional panels to create multiple meeting spaces. Additional runs of transfer track allow the staff to move the panels without disturbing meetings in progress.*

*Special face finishes and trim match the perimeter walls and custom sized panels follow the sloped floor in EPICs beautiful auditorium.*

*Wrangler applied different wood and vinyl surfaces to match the décor of their meeting rooms' perimeter walls.*

*Paired partitions provide Purdue University with space flexibility in their dining room.*

FOR MORE INFORMATION OR TO CREATE YOUR OWN PRELIMINARY DRAWINGS VISIT

[www.hufcor.com](http://www.hufcor.com)

# Operable Partitions

## SERIES 600

Operable Partitions, also referred to as “airwalls” or flat panels, deliver unlimited space division and acoustical separation. Choose from paired or continuously hinged models for wall-to-wall space separation or single panels for optimum room flexibility. As the world’s leading manufacturer of partitions, we have models for every budget and need. For facilities with special requirements, our engineering department can make recommendations or custom design partitions.

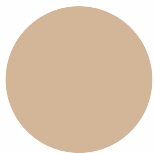
**Your way. Your own style. Consolidation without compromise.**

**The Hufcor 600 Series** operable partition is the most versatile and aesthetically pleasing operable wall constructed today. It combines the durability of a welded steel frame with the design versatility of various acoustical and decorative face constructions.

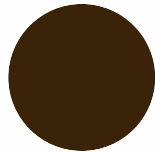
The panel design enables the 600 series to be manufactured with Hufcor’s quick-set mechanical top and bottom seals that provide the most reliable and fastest in-field operation. Hufcor’s time-tested protective edge trim is standard on both the 3" and 4" thick models yet both can be supplied with a monolithic, untrimmed edge. The deep nesting, interlocking bullnose/astragal and integrated seals provide a reliable vertical seal that keeps out sound.

### New Trim Colors – Standard

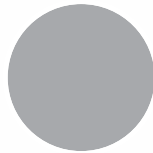
The 600 Series is available in three standard trim colors – Lamb’s Wool, Brown or Gray. Custom colors for metal trim are also available for an upcharge.



Lamb's Wool



Brown



Gray

### Pass Door Features

Hufcor’s pass door has been designed to provide optimal in-field performance. Features include:

- Rigid steel truss frame for durability
- ADA compliant push-pull door hardware
- Protective edge trim for durability and visual requirements identified by International Building Code
- Perimeter compression seals
- No exposed fasteners on inside of door frame
- Positive latching door hardware
- Edge activated bottom seals with downward seal force to stabilize door in opening
- Door leaf compensates for floor variances with a field adjustable mechanical bottom seal

### Model Numbering Conversion Chart

When specifying the Hufcor 600 series, simply choose performance features – STC rating, seal system, trim color, protective edge trim, pass doors, finishes – as needed on the project. Our model numbers are easy to understand once you know the code (see the code chart below).

## MODEL NUMBERING CONVERSION CHART

**First Digit 6:** 600 Series

**Second Digit 3 or 4:**  
3" or 4" thick panels

**Third Digit:**  
1 for single models; 2 for paired models; 3 for continuously hinged (train) models

**Fourth Digit:**  
E for Electric operation;  
F for Fire-Rated

1st Digit	2nd Digit	3rd Digit	4th Digit	Model Number
Series	Panel Thickness	Configuration	Optional Code for Special Requirements	
6	3" [76]	Single Panels		<b>631</b>
6	3" [76]	Paired Panels		<b>632</b>
6	3" [76]	Continuously Hinged (Train)	E = Electric Operation	<b>633, 633E</b>
6	4" [101]	Single Panels	F = Fire Rated Model Available	<b>641, 641F</b>
6	4" [101]	Paired Panels	F = Fire Rated Model Available	<b>642, 642F</b>
6	4" [101]	Continuously Hinged (Train)	E = Electric Operation	<b>643E</b>

**Note:** Metric dimensions are in [ ]

FOR MORE INFORMATION OR TO CREATE YOUR OWN PRELIMINARY DRAWINGS VISIT [www.hufcor.com](http://www.hufcor.com)

# OPERABLE PARTITIONS

## Operable Partitions Specifications

(Refer to the Product Guide chart on pages 4-5 for individual product features, options, standard sizes)

### Panel Construction

Panels are a nominal 3" [76] or 4" [102] thick. Panel faces are laminated to the appropriate substrate to meet the STC requirement. Welded frames are of 16 gauge [1.42mm] steel with integral factory applied aluminum vertical edge and face protection. (Optional: no protective vertical face trim for a monolithic look.) Vertical sound seals are of tongue and groove configuration to ensure panel-to-panel alignment and prevent sound leaks between panels. Hinges for pairs or continuously hinged models are recessed and project no more than 1/4" [6] from the panel face.

### Seals

Paired & Individual: horizontal top seals are retractable, provide 1" [25] nominal operating clearance, and exert upward force when extended. All panels, including pass door panels and lever closure panels have retractable top and bottom seals. 3" models have standard fixed (sweep) dual 4-finger vinyl top seals but retractable top seals are optional.

Horizontal bottom seals are retractable, provide up to 2" [50] nominal operating clearance and exert downward force when extended. 4" [102] bottom clearance is an available option on Model 641. Automatic bottom seals are optional for 3" single and paired models.

Continuously Hinged (Trains): 633E electric continuously hinged models have fixed top seals and retractable bottom seals. Fixed bottom seals are an option. 643E electric and 633 manual continuously hinged models have top and bottom fixed seals.

### Finishes

The standard face finish is factory-applied vinyl; however, optional carpet, fabric, wood veneers and other custom finishes are available on most models. Panels may also be unfinished for field decoration. The metal trim is powder coated and the matching vinyl seals are available in Lamb's Wool, Gray, or Brown. Custom metal trim colors are available. If a custom trim color is selected, the vinyl sound seals will be furnished in Gray, Brown or Lamb's Wool.

### Suspension System

Hufcor track systems have been life-cycle tested for up to 100 miles [161] or approximately 10 years of use.

### Acoustics

The partition has been tested in accordance with ASTM E90. A complete, unedited written test report is available upon request. See charts for STC ratings.

### ISO Registration

Hufcor U.S. manufacturing facilities' quality systems are registered to the ISO 9001 standards.

### Fire-Rated 600-F

One-hour fire rated partitions are available in pairs and single panel models and are identified with an "F" following the model number. They are the same basic construction as the Series 600 and may be finished with any standard Hufcor vinyl, fabric, carpet or any vinyl having a UL Label of 15 or less flame spread. Panel faces may be painted or shipped unfinished for field decoration. The local fire marshal must approve any field applied surface material.

The partition closure must be by lever closure panel which terminates in either a wall recess of a minimum 1-3/8" [35] in depth or surface wall jambs not to exceed 1-3/8" [35] protrusion.

Fire-rated panels are listed as a one-hour Special Purpose Fire Door assembly, tested to UL 10B, ASTM E152 or NFPA 252 standards. The listing includes all variations of the panel configuration, tracks, hardware, end conditions, options, finishes and pass doors contained in the project design.

### Warranty

Series 600 and 600-F partitions are guaranteed for two years against defects in material and workmanship, excluding abuse.

*Details and editable specifications can be downloaded from Hufcor's website, [www.hufcor.com](http://www.hufcor.com). Complete specifications and details may also be found in our Architectural Product Manual.*

### 630 SERIES STC & Hanging Weights

Models	Sound <sup>1</sup> Transmission Class (STC)	Hanging Weight <sup>2</sup> Lbs./Sq.Ft. [Kg./Sq.M]
631/632/633	51	10.2 [49.8]
631/632/633	49	8.9 [43.5]
631/632/633	47	7.8 [38.1]
631/632/633	43	7.3 [35.6]
631/632/633	41	5.7 [27.8]

### 640 SERIES STC & Hanging Weights

Models	Sound <sup>1</sup> Transmission Class (STC)	Hanging Weight <sup>2</sup> Lbs./Sq.Ft. [Kg./Sq.M]
641/642/643	54	10.9 [53.2]
641/642/643	51	9.5 [46.0]
641/642/643	49	8.5 [41.2]
641/642/643	47	8.0 [38.7]
641/642/643	43	7.8 [37.8]
641/642/643	41	5.8 [28.2]

<sup>1</sup> Sound Transmission Class (STC). Not all substrates are available for all STCs.

<sup>2</sup> Estimated standard panel weight. Weight will vary based on size, substrate and options. Allow approx. 3.6 lbs./lin. ft. [5.3 kg/m] for track. Add 140 lbs. [63 kg] for pass door; add 5 lbs./lin. ft. [7.4 kg/m] of height for Lever Closure Panel. Weights are calculated for a single line of panels only.

**Note:** Metric dimensions are in [ ]

### 630 SERIES Stack Sizes

Configuration	Model(s)	Nominal Stack Depth
Paired	632	3-3/4" [95] per panel + 1" [25] (for Type 38 track) 4" [102] per panel + 1" [25] (for Type 40, 11 track) <sup>1</sup>
Individual (Omni)	631	3-3/4" [95] per panel + 1" [25] <sup>1</sup>
Continuously Hinged (Train)	633 (manual) 633E (electric)	4" [102] per panel + 8-1/2" [216]

### 640 SERIES Stack Sizes

Configuration	Model(s)	Nominal Stack Depth
Paired	642/642F	4-1/4" [108] per panel + 1" [25] <sup>1,2</sup>
Individual (Omni)	641/641F	4-1/4" [108] per panel + 1" [25] <sup>1,2</sup>
Continuously Hinged (Train)	643E (electric)	4-1/4" [108] per panel + 8-1/2" [216] <sup>3</sup>

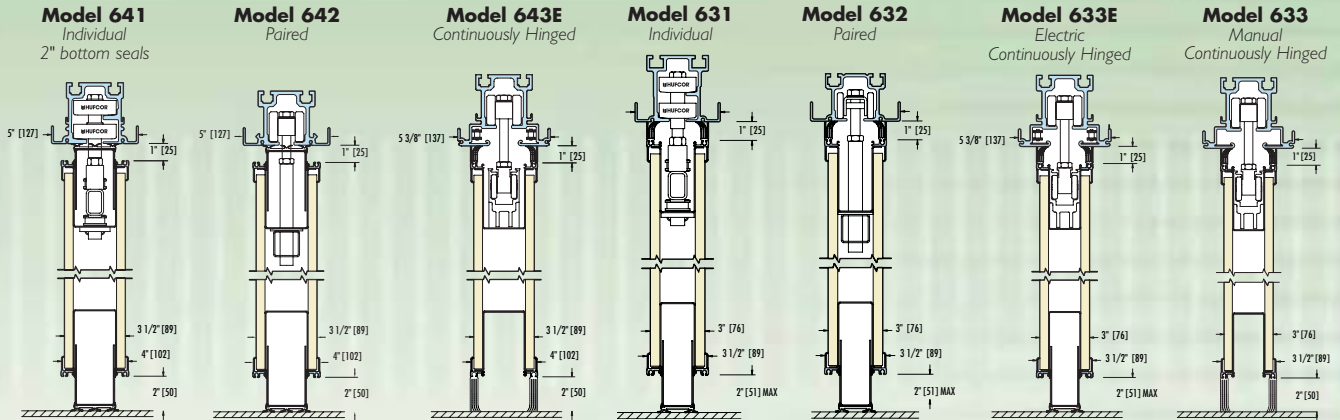
<sup>1</sup> Stack size shown is for retractable bottom seals. Use of optional face material may increase stack dimensions.

<sup>2</sup> For fire rated models, add 1-1/2" [38] in lieu of 1" [25].

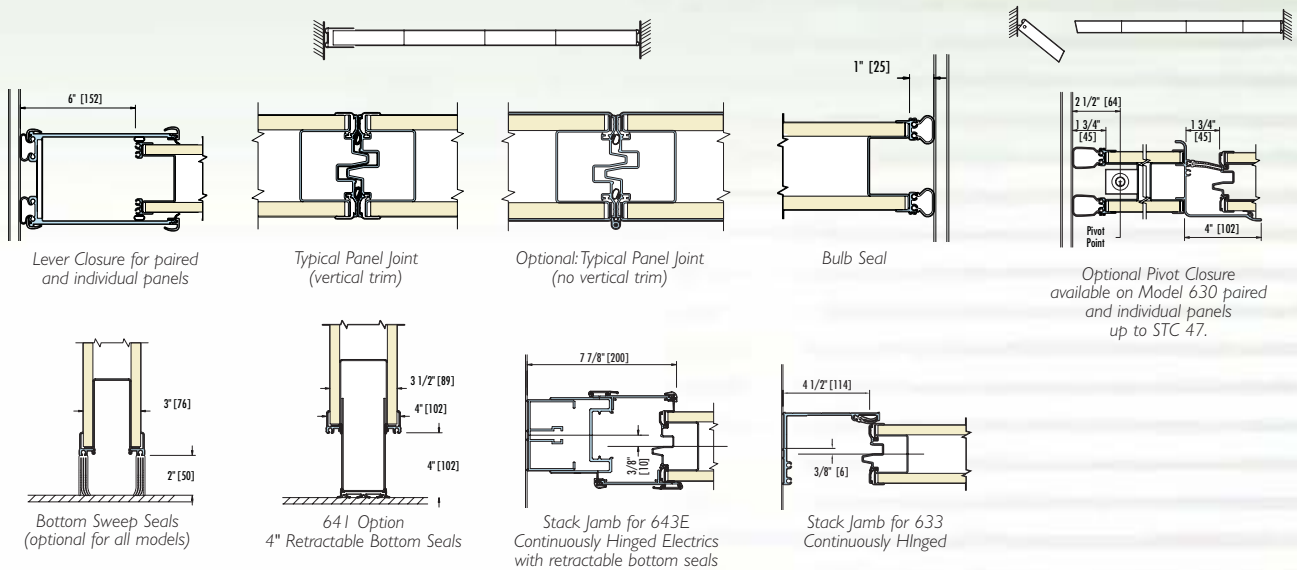
<sup>3</sup> For fixed (sweep) bottom seals, add 10-1/2" [267] in lieu of 8-1/2" [216].



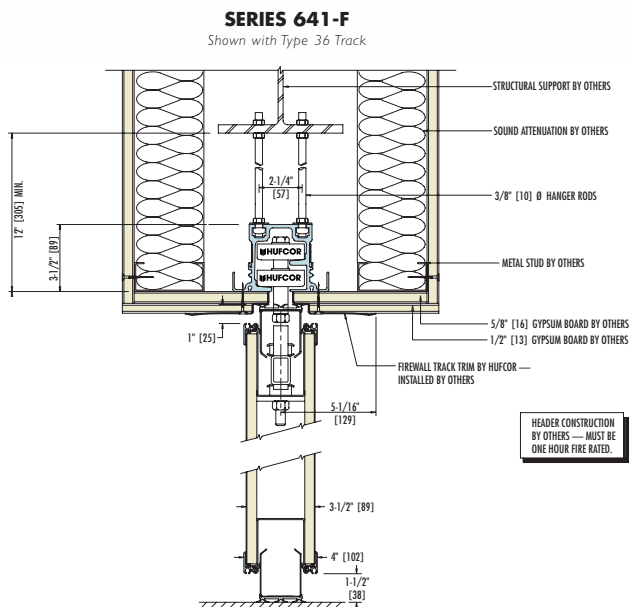
## 600 SERIES SECTIONS



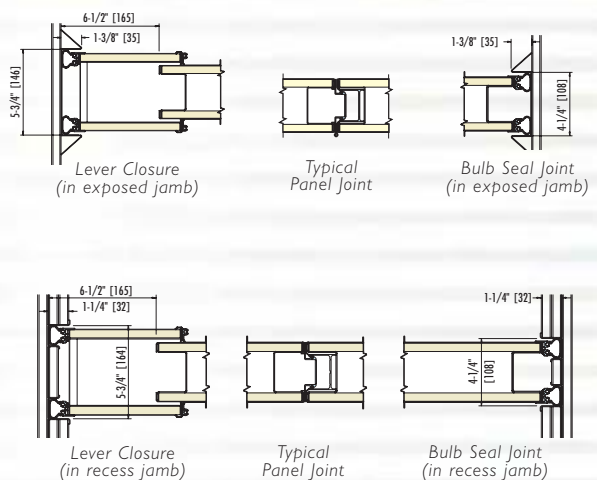
## 600 HORIZONTAL & OPTIONAL SECTIONS



## 600-F FIREWALL SECTIONS



## 600-F FIREWALL HORIZONTAL SECTIONS



Note: Metric dimensions are in [ ]

# Glasswall Partitions

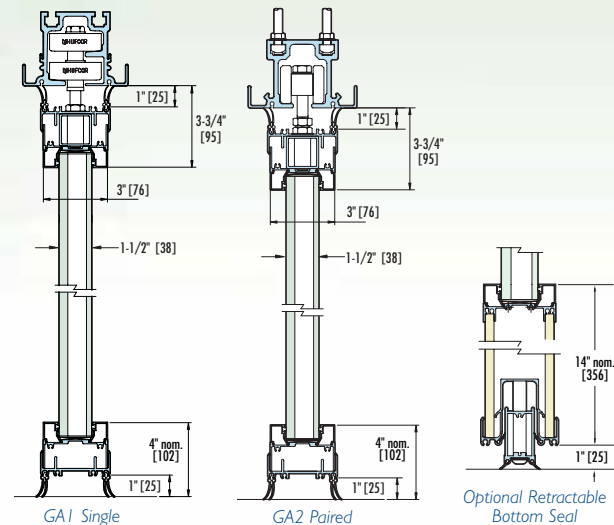
## CLEARLY VISIONARY

**Our movable glass partitions** allow natural light to flood an interior space while providing space flexibility. And, with your choice of clear tempered, full satiny translucent, etched, or custom glass, the glasswalls can become the signature design element of your rooms. Satisfied customers are using glass partitions to close off store fronts, bank lobbies, library training centers, and to create meeting rooms.

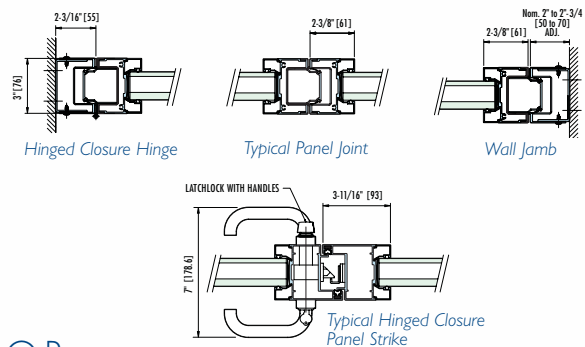


**Acoustic Glasswall** partitions maintain the aesthetic appeal of glass while providing acoustic separation to 44 STC. Acoustic glasswalls are available as single and paired panels only. They consist of glass surrounded with an aluminum frame that is a nominal 3" thick. Each panel has top and bottom sweep seals. 1-1/2" clearance retractable bottom seals that exerts downward force are an option. The aluminum frame finish is clear anodized aluminum. Black or bronze anodizing, Lamb's Wool powder coating, or custom colors are available for an upcharge.

### ACOUSTIC VERTICAL SECTIONS



### ACOUSTIC HORIZONTAL SECTIONS



## GLASSWALL PRODUCT SELECTOR

MODEL	CONFIG.	SERIES #	TOP SEALS		FLOOR SEALS		VERT. TRIM	MAX. <sup>1</sup> HEIGHTS	MAX. WIDTH	STC <sup>2</sup> ACOUS. RATINGS
			FIXED	RETRACT	RETRACT	FIXED				
Frameless	Paired	GL2	std	n/a	n/a	std	opt	10'5" [3.2m]	Unlimited	n/a
Frameless	Single	GL1	std	n/a	n/a	std	opt	10'5" [3.2m]	Unlimited	n/a
Timber-Framed	Paired	GT2	std	n/a	n/a	std	n/a	10'2" [3.0m]	Unlimited	n/a
Timber-Framed	Single	GT1	std	n/a	n/a	std	n/a	10'2" [3.0m]	Unlimited	n/a
Acoustically Rated	Paired	GA2	std	n/a	opt	std	std	12'2" [3.7m]	Unlimited	44
Acoustically Rated	Single	GA1	std	n/a	opt	std	std	12'2" [3.7m]	Unlimited	44

<sup>1</sup> Heights shown are standard. Contact your local Hufcor distributor for custom sizes. <sup>2</sup> n/a = not available

**Note:** Metric dimensions are in [ ]

FOR MORE INFORMATION OR TO CREATE YOUR OWN PRELIMINARY DRAWINGS VISIT [www.hufcor.com](http://www.hufcor.com)

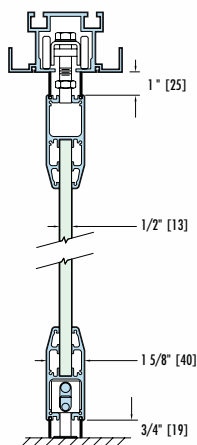


**Frameless Glasswall** consists of glass panels mechanically fastened to horizontal top and bottom rails. The glass has polished edges and no vertical trim – although vertical trim is an available option. Panels may be ordered as single or paired panels. Single (or omni-directional) panels can be used in alternate locations or stacked in a remote location. Paired panels are a good choice when the partition goes from wall-to-wall. Pivot panels allow access between rooms. Optional in-line pass doors are available on single (omni) models. The standard horizontal rails are of clear anodized aluminum but may be custom finished. Panels are shipped fully assembled.

*NOTE: There will be a gap of 1/4"-1/2" between the glass panels when they are in place to prevent glass-to-glass contact. The gap varies due to glass industry tolerances.*

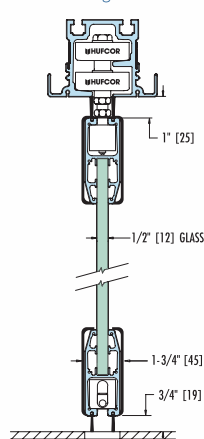
## FRAMELESS VERTICAL SECTIONS

GL2 Paired Panel



Shown with Standard Horizontal Rail

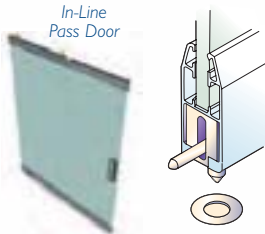
GL1 Single Panel



Shown with Stainless Steel Clad Rail

## FRAMELESS FEATURES

In-Line Pass Door

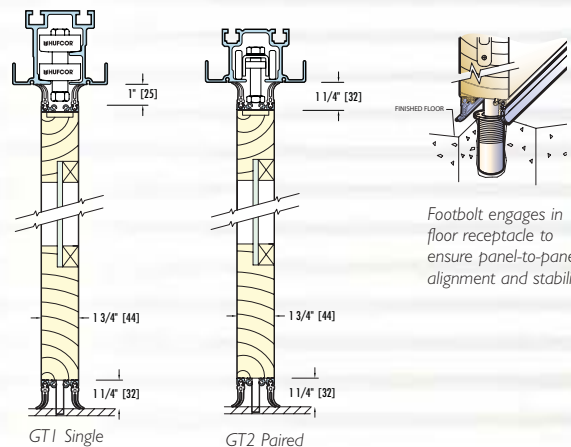


All panels are supplied with concealed foot bolts and interlocking mechanisms. Footbolt engages in floor receptacle to ensure panel-to-panel alignment and stability.



**Timber-framed Glasswall** consists of glass surrounded with solid wood. Each solid wood frame is triple laminated, cross grain, to ensure a sturdy, durable construction. Choose wood frames made of oak, maple, cherry, or Douglas fir. The wood is stained and finished with a matte coat of polyurethane. The stain color is selected from Hufcor's standard color selector. Panels may be ordered as single or paired panels. Single (or omni-directional) panels may be used in alternate locations or stacked in a remote location. Paired panels are a good choice when the partition goes from wall-to-wall. Pivot panels allow access between rooms. Optional in-line pass doors are available on single (omni) models. Panels are shipped fully assembled.

## TIMBER-FRAME SECTIONS



Footbolt engages in floor receptacle to ensure panel-to-panel alignment and stability.



**Specialty Glass** panels are also available with specialty glass and/or fixed glass options.

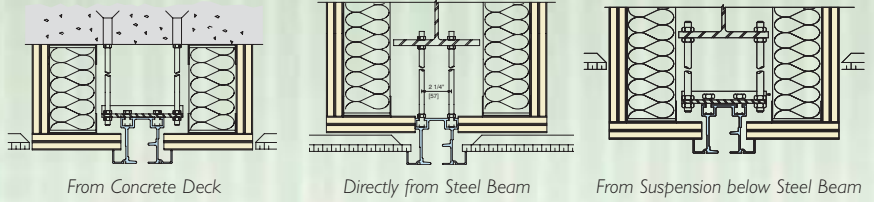
**Note:** Metric dimensions are in [ ]

# Track Systems

A QUALITY TRACK SYSTEM ASSURES YOUR PARTITIONS WILL MOVE EASILY FOR YEARS TO COME AND ENHANCE FAST PANEL SET-UP AND TAKE-DOWN.

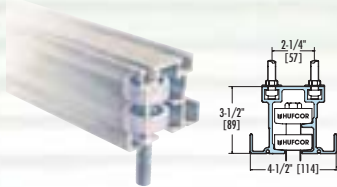
**All Hufcor tracks are rigorously tested** for a minimum of 100 miles (approx. 10 years) of use. Job requirements vary, which is why Hufcor offers a selection of tracks to meet your needs. Our patented designs are the most imitated in the industry.

## SOME TYPICAL SUSPENSIONS:

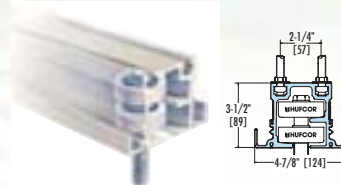


## ALUMINUM TRACK SYSTEMS

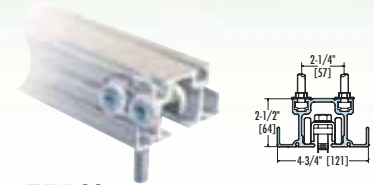
Our aluminum tracks are of clear anodized extruded architectural grade 6063-T6 alloy. Among aluminum's benefits are quiet operation, consistent shape for end-to-end alignment, unitized design for incorporating header panels and alignment pins, corrosion resistance, and we anodize it for a smooth, hard running surface needed for proper carrier movement. A selection of tracks is available to accommodate the weight of the model selected. The tracks have been load tested a minimum of 100 miles [161] (approximately 10 years of use).



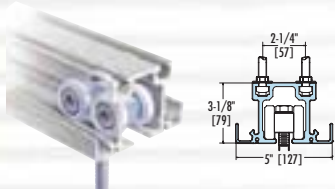
**TYPE 26  
OMNI-DIRECTIONAL**  
Weights to 500 Lbs. per panel



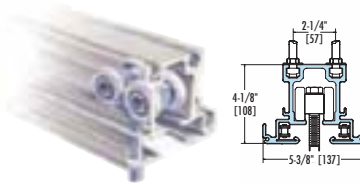
**TYPE 36  
OMNI-DIRECTIONAL**  
Weights to 1000 Lbs. per panel



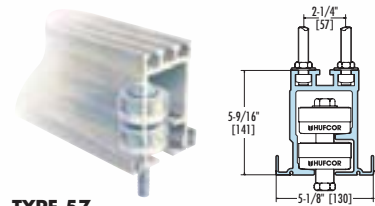
**TYPE 38  
PAIRS & MANUAL TRAINS**  
Weights to 400 Lbs. per panel



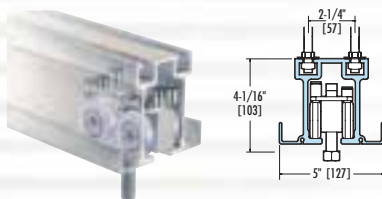
**TYPE 40  
PAIRS & MANUAL TRAINS**  
Weights to 900 Lbs. per panel



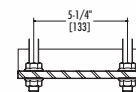
**TYPE 42E  
ELECTRIC TRAINS**  
Weights to 900 Lbs. per panel



**TYPE 57  
OMNI-DIRECTIONAL**  
Weights to 1500 Lbs. per panel



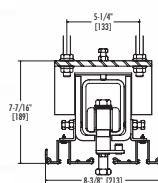
**TYPE 28  
CURVE & DIVERT TRACK FOR  
INDIVIDUAL PANELS**  
Weights to 1200 Lbs. per panel



**OPTIONAL SUSPENSION BRACKET**  
Optional suspension bracket for 5-1/4" [133] spacing. Available on all aluminum tracks.

## STEEL TRACK SYSTEMS

Hufcor Steel Track is used when the partition height or weight limit exceeds that recommended for the aluminum system.



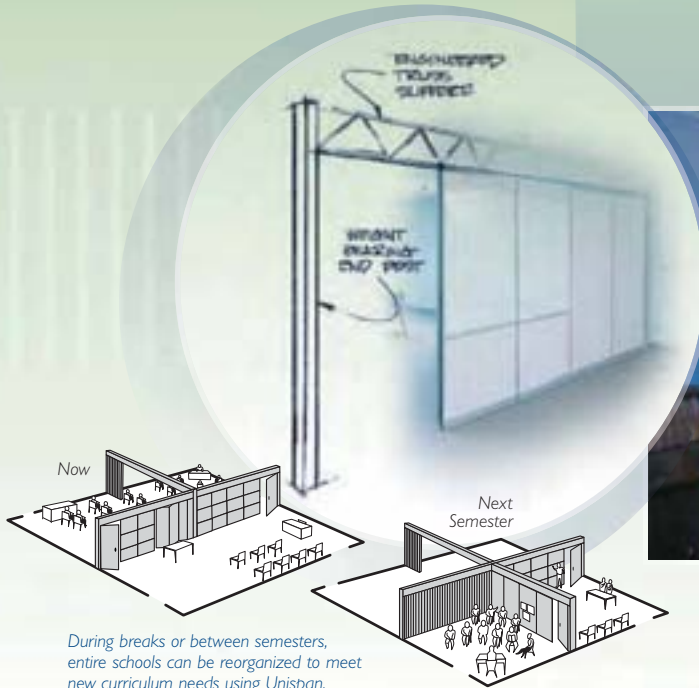
**TYPE 11  
OMNI-DIRECTIONAL, ELECTRICAL  
& PAIRED PANELS**  
Weights to 3000 Lbs. per panel

**Note:** Metric dimensions are in [ ]

FOR MORE INFORMATION OR TO CREATE YOUR OWN PRELIMINARY DRAWINGS VISIT [www.hufcor.com](http://www.hufcor.com)

# Unispan®

## SELF-SUPPORT SYSTEM



During breaks or between semesters, entire schools can be reorganized to meet new curriculum needs using Unispan.



### Hufcor's Unispan® is an independent support system

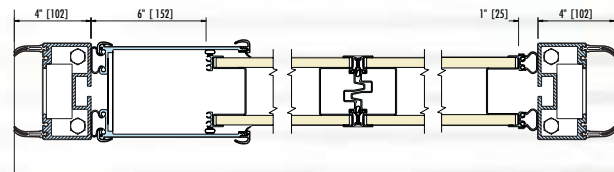
used with operable or accordion partitions for quick, easy room division. It was developed to enable facilities to install partitions in buildings with inadequate overhead structure to support the weight of partitions. Unispan consists of a horizontal truss and two 2-1/2" x 5" [63.5 x 127] aluminum columns that support a movable partition independent of the building. The columns are connected to floor plates that distribute the load of the system at the floor. Bracing is needed for lateral stability only. The floor supports the weight of the system and must support a maximum of 360 psi at each post. The system can be moved to another location to accommodate future needs.

Unispan is available in widths up to 39'9" [12.2]. The height is limited by the panel weight. Panels can weigh no more than 400 lbs. [181 kg] each.

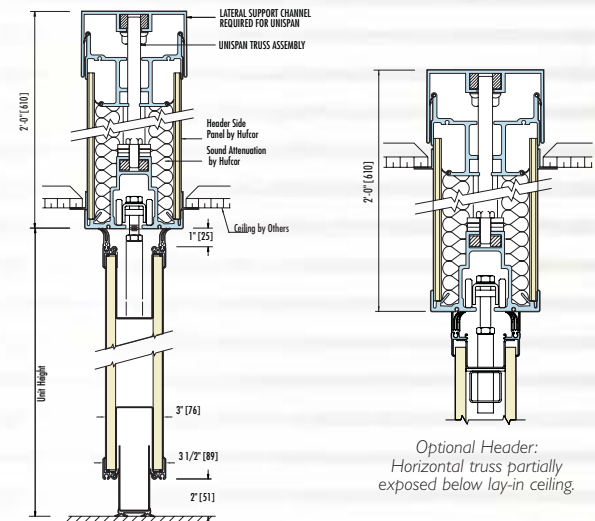
### Unispan Features:

- Pre-engineered structural support designed specifically for the operable wall
- Zone 4 seismic ratings
- Reduces costs compared to traditional pre-punched I-beam steel structure
- Reduces costs of installation, especially in multi-story commercial spaces, since the system may be manufactured in sections that fit into most elevators
- Track system can integrate with ceilings, requiring less time for ceiling installers; the bottom cord of the truss system is the partition's track
- Built-in headers form a baffle above the partition, eliminating the need for another sub to install a plenum barrier

### UNISPAN HORIZONTAL SECTION



### UNISPAN VERTICAL SECTIONS



Shown with Operable Partition

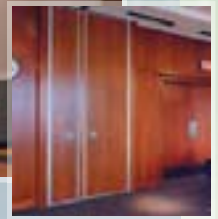
Visit our website at [www.hufcor.com](http://www.hufcor.com) for more photos or to create your own shop drawings and specifications for preliminary job information. Specifications are also available in our Architectural Product Manual.

**Note:** Metric dimensions are in [ ]

# Pocket Doors

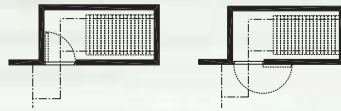
## PARTITION STORAGE

**The finishing touch to your installation,** pocket doors cover the opening of the partition storage area. The doors may be factory-finished to match the partitions or field-finished to match the perimeter walls.

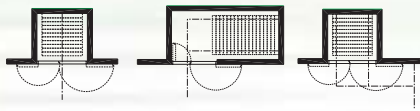


Shown are the most common configurations; however, others may be customized to your particular project.

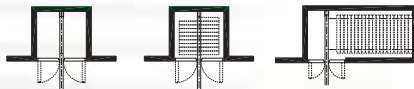
### TYPE 1 POCKET DOOR



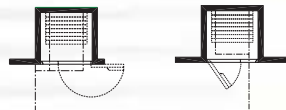
### TYPE 2 POCKET DOOR



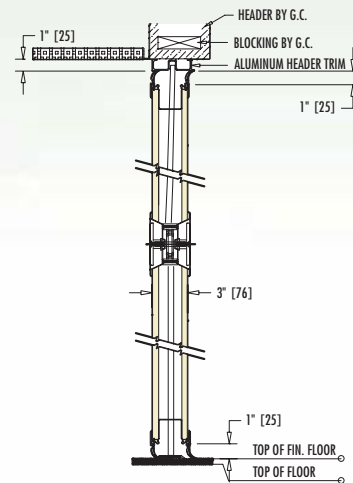
### TYPE 3 POCKET DOOR



### TYPE 4 POCKET DOOR



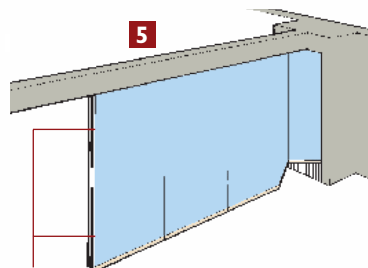
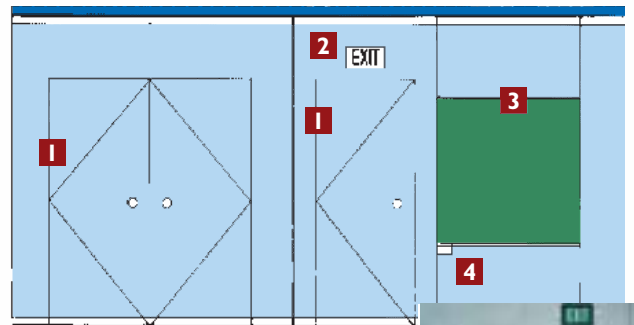
### POCKET DOOR SECTIONS



## Operable Partition Options

- 1. ADA Compliant Pass Door** – Available in single or double doors, Hufcor pass doors comply with ADA requirements and are of the same construction and finish as the panels. Options include automatic door closers, locks and prep for windows. No threshold required.
- 2. Exit Signs** – Exit signs are available for use on pass doors. They may be surface mounted or inset. Choose either green or red with white letters.
- 3. Work Surfaces** – Chalkboard, dry marker board, tackboards. Hufcor work surfaces are inset and include a full-width pen or chalk rail. The chalk and dry marker boards resist damage, abrasion, scratching and color fading, and wipe clean with a dry cloth or eraser.
- 4. Eraser Pocket** – This handy inset pocket holds a standard chalkboard eraser or other work surface accessories.
- 5. HufGard™ Safety System** – For electric partitions. Stops partition movement if people or objects are in the path of the partition.

**Note:** Metric dimensions are in [ ]



Double Pass Doors Shown with Recessed Illuminated Exit Sign.

FOR MORE INFORMATION OR TO CREATE YOUR OWN PRELIMINARY DRAWINGS VISIT [www.hufcor.com](http://www.hufcor.com)

# Portable & Mobile Partitions

## ECONOMICAL, LIGHTWEIGHT



**Portable panels are ideal for schools, churches** and in buildings that have insufficient structural support for traditional operable partitions. Hufcor's individual, portable panels are self-contained. Options such as pass doors, inset work surfaces and K-V slotting provide additional versatility. Single panels make great display boards, or use several panels to form rooms.

### CHART A PORTABLE PRODUCTS SELECTOR

Surface	STC <sup>1</sup>	Lbs./Sq.Ft. [Kg/Sq.M]	Max. Height
Honeycomb center with 3/8" [9.5] tackable face	33	2.5 [12.1]	14'2-1/4" [4324]
SoundCore center with 3/8" [9.5] particle board	36	3.5 [16.9]	14'2-1/4" [4324]
SoundCore center with 1/2" [13] particle board	40	5.3 [25.7]	14'2-1/4" [4324]

<sup>1</sup> Sound Transmission Class



Spring-Loaded Head



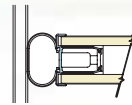
Cam Lock Female/Male



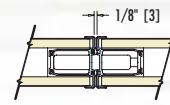
Door Frame



Window Frame



Bulb Seal



Panel Edge



Kick Base on Carpet



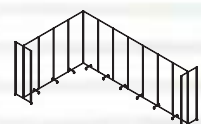
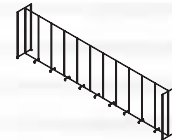
Universal Post

**Roommate Mobile Partitions** are part-high sight dividers on casters. The panels are all connected and unfold easily to create rooms within rooms, display areas or private spaces. The panel faces are sound retardant and are covered in attractive, sound-absorbing fabric.



### Roommate Features:

- Lightweight aluminum frame with hard black coating and rounded edges
- Remains in position without use of separate clips or tools
- Flame retardant, sound absorptive fabric
- Panel thickness is 3/4" [1.9cm]
- 360 degree hinges allow the panels to be rotated into any position
- Radius edges eliminate pinch points
- Fully tackable surface
- Double locking wheel on end members for easy movement on any surface and lock walls into position
- Unit to unit connectors allow for infinite lengths
- Ship fully assembled
- 3-year warranty



### ROOMMATE STANDARD SIZES & LENGTHS

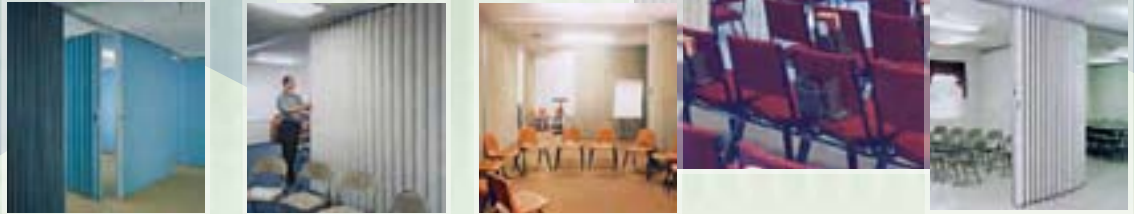
Standard Heights
4' (48") [122cm]
5' (60") [152cm]
6' (72") [183cm]
6'10" (82") [208cm]
7'6" (90") [229cm]

Standard Lengths (panel widths end to end)
8'6" (102") [259cm], 3 panels
14'0" (168") [427cm], 5 panels
19'5" (233") [592cm], 7 panels
25'0" (300") [762cm], 9 panels

**Note:** Metric dimensions are in [ ]

# Accordion Doors

## FOLDING PARTITIONS



**The industry's most attractive, durable accordion door.**

Accordion doors are the fastest, most economical way to divide and organize space and insulate against noise. They provide instant privacy. Just pull the door across the opening and latch it.

Hufcor's semi-rigid laminated covers are built tough to withstand impact and provide years of day-to-day use. When it's time to redecorate, the covers may be replaced for a fraction of the cost of a new door.

Acoustical models have an inner steel lining that deadens sound and increases durability. The clean, crisp lines keep their shape and don't sag or bag, even after years of use.

A selection of anodized aluminum track types enable the track to be recessed, exposed, directly attached or suspended from hanger rods. Optional curves and switches allow the doors to be used or stored in alternate locations. Optional posts can be ordered to attach one or more doors to create intersections. Doors may be ordered as single doors or as a pair.

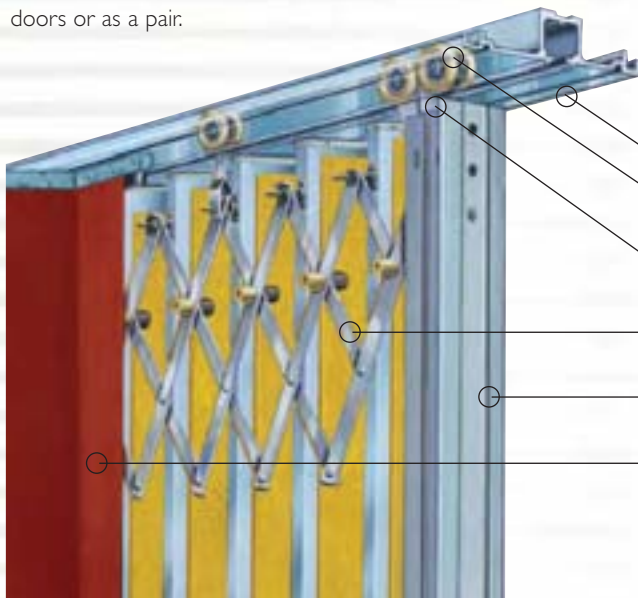
HUFCOR ACCORDION DOORS ARE AVAILABLE IN SIZES UP TO 17'0" [5.2M] IN HEIGHT BY 40'0" [12.1M] WIDE. WIDER OPENINGS MAY BE FILLED WITH MULTIPLE DOORS THAT ARE ATTACHED WITH SPECIAL POSTS.

### ACCORDION Stack Sizes & Weights

Model	STC <sup>1</sup> Rating	Lbs./Sq.Ft. [Kg./Sq.M]	Stack Dimensions <sup>2</sup>
1500	15 (est.)	1.3 [6.3]	1.4"/ft. + 2" [117 + 51]
2000	20 (est.)	1.3 [6.3]	1.4"/ft. + 2" [117 + 51]
3100	31	2.7 [13.2]	1.9"/ft. + 3" [158 + 76]
3500	35	3.0 [14.6]	1.9"/ft. + 3" [158 + 76]
3900	39	3.7 [18.1]	1.9"/ft. + 3" [158 + 76]
4000	40	4.0 [19.5]	1.9"/ft. + 3" [158 + 76]
4100	41	4.3 [21]	1.9"/ft. + 3" [158 + 76]
4500	45	5.1 [24.9]	1.9"/ft. + 3" [158 + 76]

<sup>1</sup> Sound Transmission Class.

<sup>2</sup> Add 30% to stack dimension for carpet. Carpet provides .55 NRC rating. Single Door Maximum Width 40'0" [12.19m]. Maximum Height 17'0" [5.18m]. For sizes in excess of these contact your Hufcor distributor.



### Accordion Standard Features:

- Anodized aluminum track for years of easy movement
- Nylon-covered steel ball bearing carriers for smooth, quiet movement
- Adjustable lead carrier keeps the lead post plumb with the wall for tight acoustical seal
- Precision engineered steel internal pantograph for smooth, easy movement
- Full-height magnetic sealing on all acoustically-rated models; adds to acoustic isolation
- Rigid laminated covers resist impact, keep their clean, crisp lines, and don't sag or bag, even after years of use
- Registration slip built into every door contains information needed to replace or repair the covers

**Note:** Metric dimensions are in [ ]

FOR MORE INFORMATION OR TO CREATE YOUR OWN PRELIMINARY DRAWINGS VISIT [www.hufcor.com](http://www.hufcor.com)



## Accordion Specifications

### Construction

Hufcor's accordion doors consist of two laminated covers assembled to steel pantographs and supported by clear anodized aluminum covered steel channel posts at each end. Covers are semi-rigid laminated construction for wrinkle-free impact resistance.

Model 1500 – Covers have fiberboard strips and backing laminated within each fold. Model 2000 is the same as Model 1500 with the addition of sweep strips top and bottom of one side.

Models 3100-4500 have multi-ply sweep strips at top and bottom of both sides and Steelcor laminated within each fold to achieve the acoustical ratings. The jamb is equipped with Magnaseal® magnetic contact latch.

Optional posts enable 2, 3 or 4 doors to meet. Optional hardware enables accordion doors to intersect with our operable or portable partitions. Locks are an option.

Short doors for over-the-counter applications may be ordered.

### Suspension System

Accordion doors are supported by nylon-tired steel ball bearing carriers. The track is clear anodized aluminum. Curves and switches are available to enable the doors to navigate curves and be used or stored in alternate or remote locations. Accordion doors may also be used in our Unispan® self-support system.

### Finishes

The standard finish is factory applied vinyl from Hufcor's standard vinyl selector. Premium carpet, fabric or pre-approved custom finishes are an optional upgrade.

### Acoustics

The partitions have been tested by an independent acoustical consultant at a laboratory accredited by the National Bureau of Standards in accordance with ASTM E90.

### Operation

Standard partitions are manually operated. Electric operation is available.

### ISO Registration

Hufcor U.S. manufacturing facilities' quality system is registered to the ISO 9001 standards.

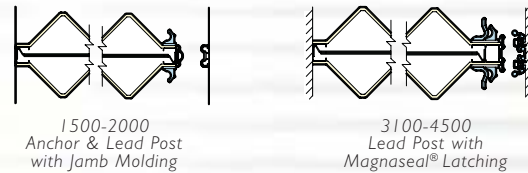
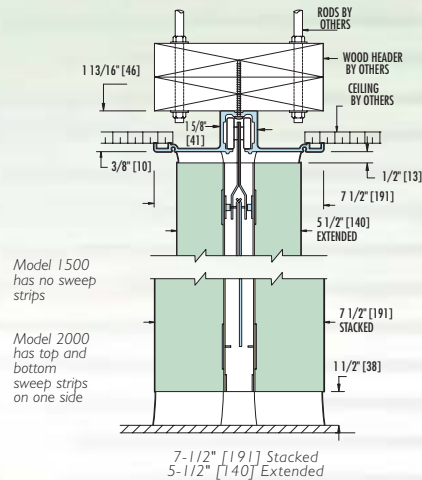
### Warranty

Partitions are guaranteed for two years and the pantographs, trolleys, and tracks are guaranteed for 10 years.

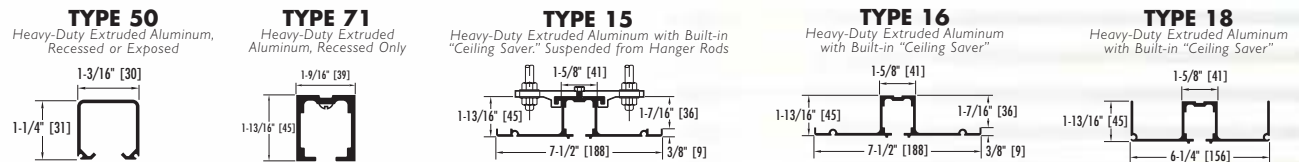
Details and editable specifications can be downloaded from Hufcor's website, [www.hufcor.com](http://www.hufcor.com). Complete specifications and details may also be found in our Architectural Product Manual.

## ACCORDION SECTIONS

### MODELS 1500-4500

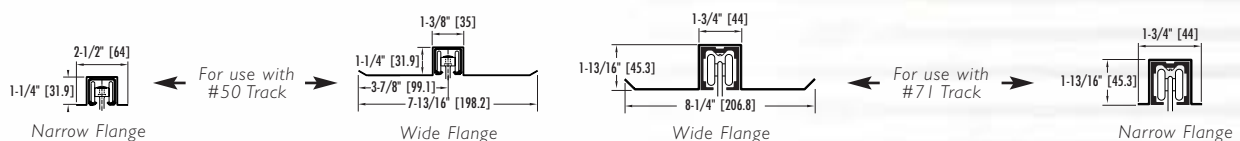


## ACCORDION TRACK SYSTEMS



Track Types	Type 50	Type 71	Types 15 & 16	Type 18
Series 1500-2000	Standard 40' x 17' [12.12 x 5.15]	Optional All Sizes	Optional All Sizes	Optional All Sizes
Series 3100-3500 3900	Optional to 30' x 9' [9.09 x 2.72]	Standard All Sizes	Optional All Sizes	Optional All Sizes
Series 4000-4500	Not Available	Standard All Sizes	Optional All Sizes	Optional All Sizes

Channel: Optional, but recommended for recessed installations. Channel provides smooth, straight ceiling lines; aids track installations. Flanges on both sides protect ceiling. Primed off-white.



Note: Metric dimensions are in [ ]

# Bi-Fold Doors

## VERTICALLY FOLDING DOORS

### Now an oversized door opening is a design opportunity.

The Hufcor Premier™ Bi-Fold Door folds vertically up and out to minimize the amount of head room needed inside the building. The Premier's operation offers a unique way to provide access through large openings as the door takes up almost no side room and very little headroom, needs no floor tracks and comes equipped with simple, automatic push-button operation. The Premier offers the design community more creative ways to divide spaces and offer flexible openings, at the push of a button.

Hufcor provides the frame, drive mechanism and controls, leaving the choice of covering or finish material open to the architect to meet the design need. The Premier™ aluminum bi-fold door can be skinned with just about any material in ways limited only by the imagination. Whether the covering desired is glass, translucent plastic, brushed aluminum, stainless steel, decorative wood, concrete or stucco, Hufcor designs and prepares the door to accept the material.



### Bi-Fold Features:

- Architectural grade aluminum frame
- Finish options including powder coating and anodizing
- No floor track required
- Extensive cladding options to match or enhance the building exterior
- Top mounted motor and drive mechanism
- Custom built for each job
- Minimum opening 8' x 8' [244 x 244cm]; Maximum opening: 30' x 20' [914cm x 610cm]; Larger sizes available with modifications to the standard frame
- Pass thru door option for openings 17' [518cm] and taller



World Leader in Flexible Space Management™

### Worldwide Headquarters

PO Box 591 / 2101 Kennedy Road, Janesville, WI 53547  
Toll-Free: 800-542-2371, ext. 214 Telephone: 608-756-1241  
Fax: 608-758-8253 E-mail: [info@hufcor.com](mailto:info@hufcor.com)  
Web: [www.hufcor.com](http://www.hufcor.com)

### Additional U.S. Manufacturing Facilities

#### Hufcor Airwall® Inc.

PO Box 1149 / 8739 E. Artesia Blvd., Bellflower, CA 90707  
Telephone: 562-634-3116 Fax: 562-630-8203  
E-mail: [admin@hufcorairwall.com](mailto:admin@hufcorairwall.com)

**The Hufcor Commitment to Green Manufacturing, Sustainability and LEED™.** Hufcor is committed to being an industry leader when it comes to protecting the environment by reducing pollutants and minimizing our environmental impact on air, water and land. For more than 10 years Hufcor has utilized a "Green" approach to manufacturing and energy consumption and has increased the percentage of materials that we recycle, reuse, repair, restock or return for salvage. Today, the Hufcor commitment and progress toward Green manufacturing is greater than ever as we continue to develop standards that support various LEED™ (Leadership in Energy and Environmental Design) points to assist the achievement of LEED certification goals.



### IT'S ALL IN THE BOOK

More details on all Hufcor products are available in the Architectural Product Manual. Call your local rep today to receive a complimentary copy.

see us at  
**Sweets.com**



\*USGBC and related logo is a trademark owned by the U.S. Green Building Council and is used by permission.

The quality systems of Hufcor's U.S. manufacturing facilities are registered to the ISO 9001 standards. Hufcor has a program of continuous product improvement. As a result, some products may be modified from those represented in this catalog.

Hufcor Partition U.S. Patents:			
2,861,660	3,056,193	3,223,147	3,295,257
3,295,588	3,450,185	3,638,376	3,755,968
3,783,930	3,879,799	3,042,960	4,014,137
5,181,296	5,230,123	5,406,676	5,481,834
5,564,759	6,079,174	6,112,466	6,167,937