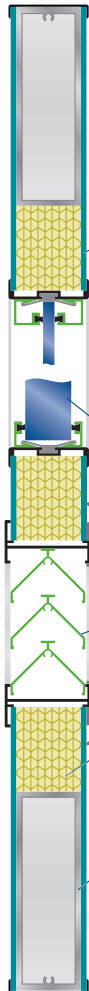




Green since 1961, Cline Doors are made of recyclable aluminum materials, and designed to withstand even the harshest of chemicals or environments. Cline Doors pre- and post-consumer recycle content can contribute to your Sustainable Design and Green Building requirements, while our low maintenance and service longevity also reduce Life-Cycle Costs.



Surface Skins

Series 100BE

- 0.040" Aluminum
- Polypropylene Liner (Glass Reinforced)

Series 200BE

- 0.120" FRP

Vision Lites

- 1/4" Glazing
- 9/16" Glazing
- 1" Glazing

Louvers

- 2" Y-Style Blades
- Insect Screen

Honeycomb Core

- Marine Grade
- Organic Based

Tubular Frame

- Full Perimeter
- 4-1/4" Width (≥)
- 1-3/8" Depth
- 1/8" Wall Thickness

Cline Doors Exclusive Features and Materials



Honeycomb Core Core contains organic materials with a compression strength of 94.8 psi.

Hardware Reinforcement Aluminum backup tubes contiguous for full perimeter of the door.

Door Trim Lock and hinge stile trim are mechanically fastened to the backup tube to help protect door edges and allow for field replacement. Lock stile beveled edge with integral weather stripping.

Trim Pieces Finished with a minimum of Class I anodized finish.

Vision Lites Glazing is tempered glass with snap-in, non-removable stops and no exposed fasteners. Standard glazing thickness: 1/4-inch, 9/16-inch or 1-inch.

Louvers Aluminum alloy blades and frames, with a minimum of 50 percent free airflow. Exposed fasteners are stainless steel.

Surface Skins Cross laminate seams for corner strength and laminated the full length of the door.



Aluminum Contains both pre- and post-consumer recyclable content.



Adhesives Water soluble, non-toxic with No VOCs (volatile organic compounds).