

**I<sup>B</sup> Industrial Building Panels**

07 40 00/IND  
BuyLine 4454

# Custom Preformed Metal Wall Systems



1957-2009  
**52**  
YEARS OF  
EXCELLENCE  
I. B. P., Inc.

# THE I. B. P. VISION

Cover: Soft Sheen/Carson Products  
G.C.: UBM, Inc.  
Architect: Amstadter Architects

Left: I.B.P. custom column covers  
in Kynar "Silver Metallic"

## The Vision

Whether you choose the sharp, clean, flat, futuristic lines of the 21st century, or the gentle, environmentally aesthetic blending of man with nature, Industrial Building Panels turns your architectural vision into a reality by offering custom design options and applications of infinite variety.

## Table of Contents

The I.B.P. Vision .....	2
1000 Series Honeycomb Core .....	2
Custom Capabilities .....	3
900 Series Thermalply Panel.....	4
1200 Series Tech-Clad .....	5
Exterior Wall Panels .....	6-7
Special Construction Panels .....	7
700 Series Sharpline.....	8



Above: Jackson Office and Maintenance Building, Wyoming Department of Transportation, Jackson Hole, WY  
G.C.: Kloefkorn-Ballard Architect: Plan One Architects

## 1000 Series Honeycomb Core

Flat! Beautiful! The vision is yours. When your design calls for panels that are clean, lightweight and extremely flat, IBP's 1000 Series Honeycomb Core panels offer a sharp, streamlined look. Our honeycomb panels consist of smooth metal skins bonded with a structural adhesive to a rigid aluminum or paper honeycomb core, made with technology originally developed for the aerospace industry.

## Features

- Extrusions are custom formed
- Aluminum and steel sheets
- Suitable gauges are available for perimeter trim, sills, copings, and column covers
- Available in both dry and wet joint design



Above: Flagstar Bank World Headquarters, Troy, MI Architect: Ghafari Associates, L.L.C.



*Left:* I.B.P. Tech-Clad 1200 curved fascia and soffit in .125" aluminum with Kynar "Ivory" finish.

**A**s a custom house, celebrating our fifth decade, IBP will work with you to give you exactly what you need to bring your design to life. A desire for dramatic texture? Hard-to-fit-columns or special canopy and soffit designs? Other unique requirements? Our goal is to work with the architect to attain original, dynamic design objectives, providing powerful options that can be fully employed. IBP can fabricate smoothly rounded, circular column covers with monumental presence, and offer all types of custom brake forming in lengths of 40'-0", in material thickness to 3/16". In addition to conventional siding, we manufacture custom wall panels, accent panels and special feature items. Our expert design, engineering and project management staff will provide you with personalized service from concept to completion.

*Right:* Sam Wyly Hall  
University of Michigan  
G.C.: Spence Brothers  
Architect: Luckenbach/Ziegelman  
Architects

## Renovation Work

We are specialists in renovation and rehabilitation work. Update a 60 year-old office building to high-tech beauty. IBP has the ability to match essentially any siding in the marketplace with our fabricating processes. We will work with you to match colors, so that aged panels can blend perfectly with your new renovations.

## Colors

Steel and aluminum substrates are finished with high performance Kynar 500 fluoropolymer paint. Coatings are available in standard colors, custom match colors, exotic and metallic colors. Please contact an IBP representative for samples.



# 900 Series Thermalply Panels

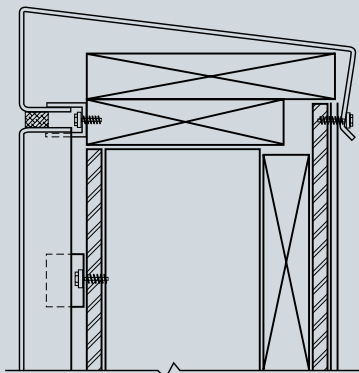
Flat, crisp and contemporary, the ultimate in design flexibility when a solid, yet lightweight metal skin is the look of choice. THERMALPLY is a factory assembled panel consisting of a foam core laminated between a variety of facing materials, formed for vertical or horizontal applications, creating a smooth, attractive, energy-efficient panel.

Series 900 V is designed for vertical installations. The joint detail provides a closely joined flush surface. Panel skins are completely flat, giving a modern smooth wall surface. Series 900 H is designed for horizontal applications. The horizontal joint is an interlocking weathertight construction with a 1/2" reveal. The vertical ends are a trimless design, with the metal skin returning inward to provide a flush sealant surface.

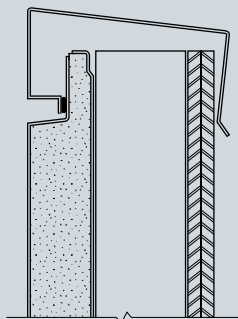


Above: The Motorola Facility in Elma, NY G.C. and Architect: Cannon

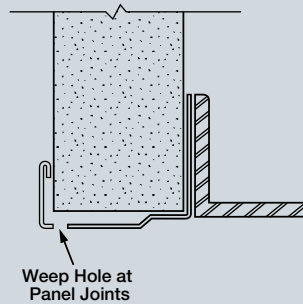
## Details



Parapets

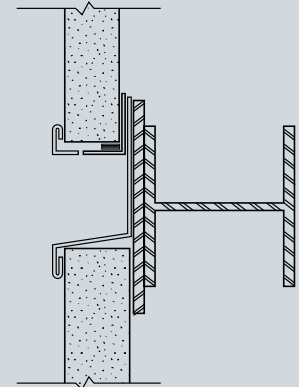


Coping



Weep Hole at Panel Joints

Sill



Horizontal Reveal

## U-FACTOR

CORE THICKNESS	EXTRUDED POLYSTYRENE AS MANUFACTURED	POLYISOCYANURATE AS MANUFACTURED	*EXTRUDED POLYSTYRENE AGED 180 DAYS @ 75°F	*EXTRUDED POLYSTYRENE AGED 180 DAYS @ 45°F	POLYISOCYANURATE AGED 180 DAYS @ 75°F
1"	0.126	0.126	0.171	0.160	0.163
1.5"	0.083	0.085	0.120	0.112	0.114
2"	0.063	0.064	0.092	0.086	0.087
2.5"	0.051	0.053	0.075	0.070	0.071
3"	0.043	0.044	0.063	0.059	0.060

\*The thermal resistance of extruded polystyrene will not vary more than 10% from the published aged 180 days U-factor over a 15 year period. Contact an I.B.P., Inc. representative for warranty information.

**T**ECH-CLAD has unmatched features in an extremely flat, strong panel offering that futuristic look for limitless, exciting design applications. TECH-CLAD, an aluminum plate cladding, offers engineered features no other wall panel system can match. IBP's ruggedly thick aluminum plate allows the panel to substantially resist damage due to outside elements. TECH-CLAD is as tough and weather impervious as it is good looking. Let your imagination take you to a strong world of striking new dimensions.

## Single-Source Responsibility

IBP's in-house team of sales, engineering, manufacturing and installation personnel provides the highest level of expertise and quality. Our highly qualified and experienced design staff will see your cladding project through from start to finish. IBP's goal is to turn your architectural vision into a bold reality.

*Right:* Oakwood Hospital, Dearborn, MI  
G.C.: Barton Malow Co.

*Architect:* Smith, Hinchman & Grylls Assoc.



## Features

- Formed framed edge design eliminates field cutting, oil canning, and guarantees flatness
- Bends are welded on both inner and outer surfaces and ground smooth
- Exciting finishes, custom mixed or matched
- Joint options—dry, caulked, recessed and/or flush joints
- TECH-CLAD's dry joint system is engineered with the "rain screen" principle
- TECH-CLAD allows condensation weepage to escape via an internal drainage system
- Available as a ventilated system in several designer patterns

*Left:* Tech-Clad 1200 facia, soffit and column cover.

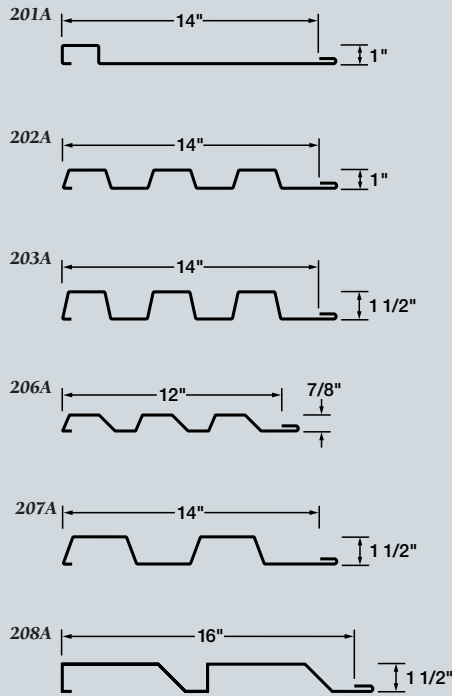
# Exterior Wall Panels

IBP's Preformed metal siding series 200, 300, 400, 500 and 600 provide an attractive and practical cladding for many types of enclosures. This series is available both as an uninsulated single skin, and as an insulated system with a standard steel liner. Panels are available in lengths up to 40 feet. *IBP will match any desired profile, including discontinued products.* Steel and aluminum substrates are finished with high performance Kynar 500 fluoropolymer paint, available in standard and custom match colors.

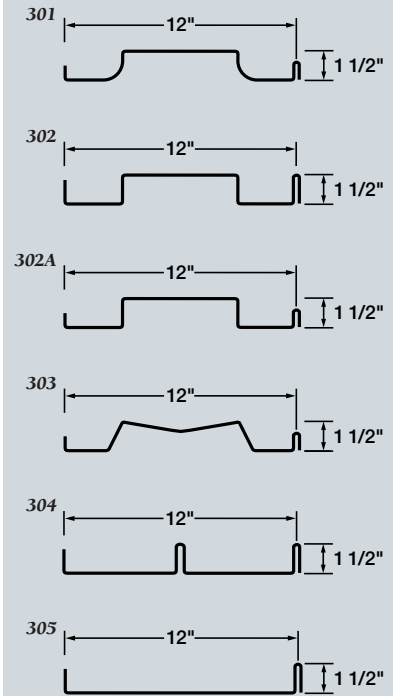
## Features

- Engineered on a per order basis, panel lengths are exact to a  $\pm 1/8"$  tolerance
- Standard and custom shape flashings, from matching or accent colors
- Variations of our standard profiles are also available
- Available in thickness up to .090" Aluminum

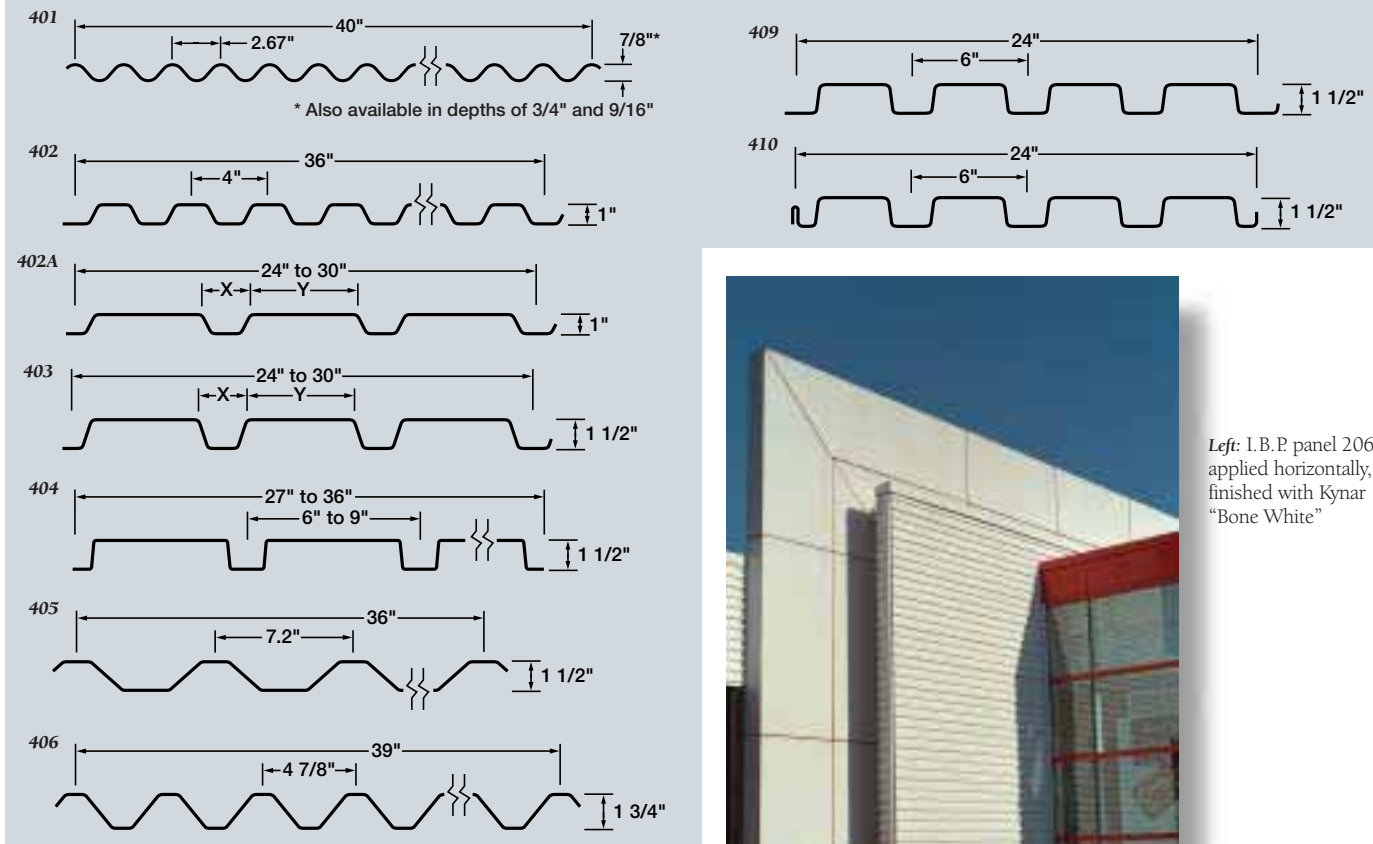
### Matchline 200 Series



### Matchline 300 Series

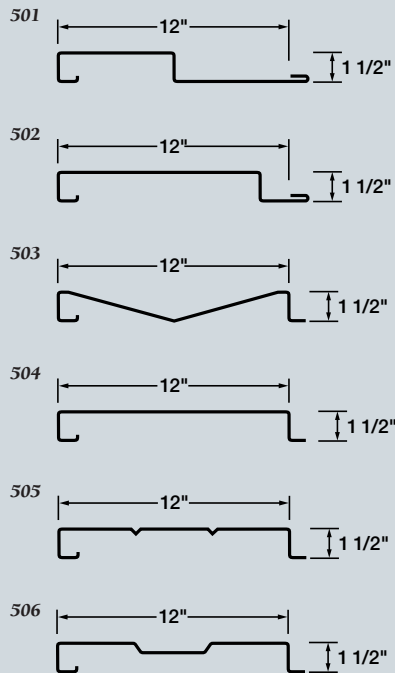


### Ribline 400 Series

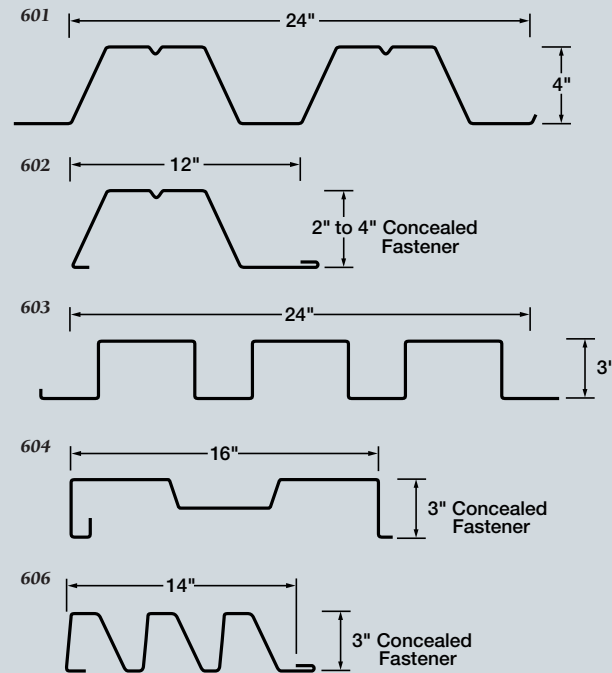


Left: I.B.P. panel 206A applied horizontally, finished with Kynar "Bone White"

### Matchline 500 Series



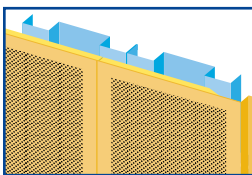
### Matchline 600 Series



# Special Construction Panels

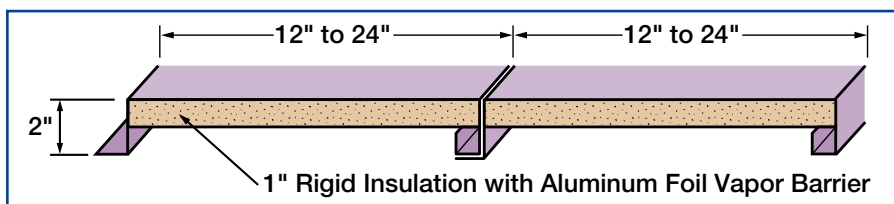
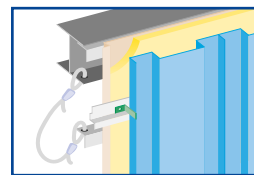
## Acoustical Panels

- Field Assembled Wall Panels with perforated liner panel, 1/8" holes on 3/8" center staggered pattern
- N.R.C. Ratings are developed using ASTM Test CA23
- S.T.C. Ratings are developed using ASTM E90 and Test E4132



## Explosion Relief Panels

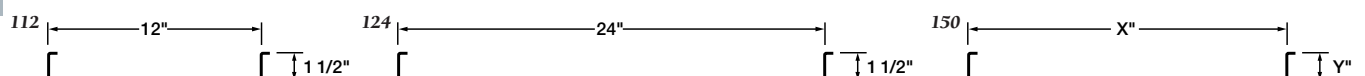
- IBP Explosion Venting Wall System is designed to release at a specific internal pressure
- Explosion venting fasteners are used to quickly vent the explosion force and are FM approved



## Series 1400 Panel

- Stucco embossed or smooth
- Concealed fastener
- Joint sealer - wet or dry
- Trimless ends for horizontal panel

## Liner Panels

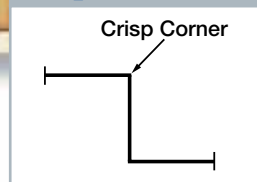


# 700 Series Sharpline



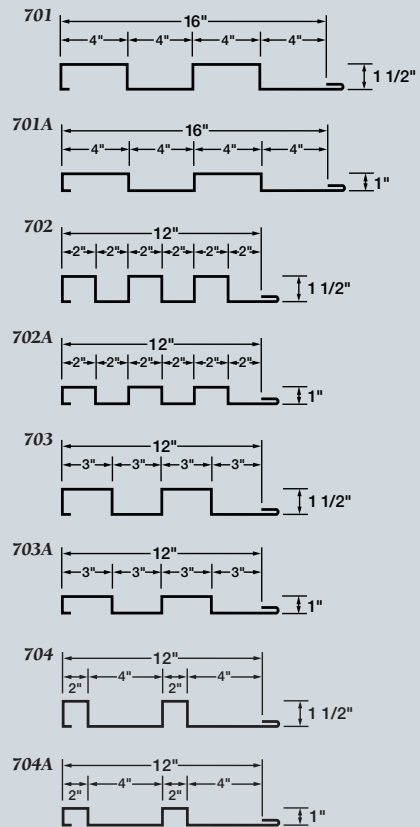
Above: Nacom Corporation, Griffin, GA  
 Design Architect: Plantec Architects  
 G.C.: Shimizu America Corp.  
 Architect: Stevens & Wilkinson of Georgia, Inc.

## Typical Brake



Introducing IBP's new 700 Series concealed clip panels. For striking dimensions in architectural metal panel systems, available in XL exotic colors. The SHARPLINE panels are made on a press brake from 0.040" smooth aluminum using sharp 90 degree dies. This method of fabrication gives the panels a crisp, extruded look, perfect for buildings where a dramatic sharp edge is part of the design concept. IBP designed the SHARPLINE 701 Panel for NASA.

## 700 Series



## Features

- Available in lengths up to 40'
- Metal thickness and press brake manufacturing eliminates "oil-canning"
- Retrofit or new construction
- Insulated system also available
- Variations of our standard profiles are offered
- Exterior and interior applications

see us at  
**Sweets.com**



**Industrial Building Panels, Inc.**

1090 Chicago Road

Troy, MI 48083

248-588-4710 • 248-585-8909 (fax)