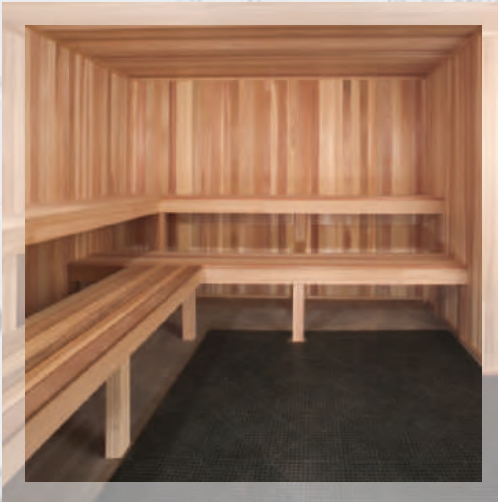


"The Professional's Choice"



McCOY
SAUNA AND STEAM

Sauna & Steam Experience...

The benefits of saunas are well documented — making these amenities essential for health clubs and other commercial installations. They have also become “must have” home amenities.

To ensure maximum enjoyment and performance from your sauna, choose McCoy Sauna and Steam — known since 1964 as the experts in the industry



— Project Management: From Concept to Installation



Design: McCoy's reputation as the “commercial experts” begins with well thought out design assistance. Our in-house experts will provide design assistance and architectural drawings to ensure you get exactly what you want — a sauna to fit your requirements.

Large or Small: Residences, hotels, corporate wellness centers and apartment complexes...individual needs require an individual approach. Whether for two or 22 persons, it doesn't matter — McCoy will work with you to get exactly what you want.

Quality Saunas Since 1964: Together we will find the best solutions for your sauna project. Your design (or ours), your ideas and your wishes, in partnership with our 40 years experience will ensure you unmatched form, function and quality. From the first sketch to the final installation, our technical support and product knowledge will be at your disposal.

What does project management include? McCoy provides:

- Free design assistance, including CAD drawings
- 40 years of experience to design and build the perfect sauna for your project.
- Necessary documents/submittals at each phase of the construction project; management of contractual matters.

- Nationwide network of factory certified installers
- Service after the sale (we've been here for 40 years, and we'll be here to take care of your future needs)

— The McCoy Difference

The McCoy Difference is notable — beginning with the design, but continuing to the less obvious details.

Finest Lumber

Our premium Western Red Cedar is the most select. To ensure that no distortion of the wood takes place after construction, the kiln-dried lumber (dried to 12% or less) is shipped from the mill to our climate controlled warehouse.

Western Red Cedar is a superior sauna wood because it is least hot to the touch, it has the most beautiful color variation, and it has a pleasant aroma. It has very high resistance to discoloration, splintering, warping and decay.

Broad Sauna Heater Line

McCoy heaters range from 1.7 kW to 14.4 kW (all UL-listed).

Factory Direct Sales and Support

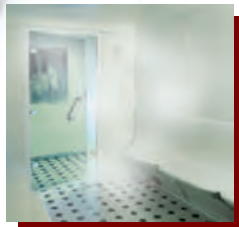
McCoy specializes in factory-direct sales. That means you work directly with our expert team to efficiently get everything you need to take care of your project.

Custom Designed to your Specifications

From your design we will provide a sauna virtually any size or shape. Ask for our Sauna Design Manual, including in depth information on sauna guidelines.

A complete line of heat-bathing products — Saunas, Steambaths and Infrared Rooms

McCoy's product line is second to none, and includes a virtually infinite range of saunas (custom-cut material packages and modular packages); a broad range of acrylic modular steamrooms; a wide range of steambath generators from the small plug-in 120-volt version up to our hard-working commercial boilers. Additionally, McCoy's product range includes Infrared Heat Therapy Rooms.



McCoy

Modular Saunas

13 24 16/MCC
Buyline 1946



In addition to the examples of sauna layouts and sizes shown, McCoy offers a limitless variety of standard and custom-made, pre-cut and modular sauna rooms. Call 1-800-225-7519 for free CAD design assistance and alternative layouts.



4' x 4'	5' x 6'
5' x 5' 5 Sided	5' x 7'
6' x 6'	6' x 8'
7' x 7'	8' x 10'
8' x 12'	8' x 12'

— The Remodelor's Dream

Your modular room will look almost identical to one built from a pre-cut interior package, but will require far less labor. You can erect your free standing modular sauna in an afternoon—without special skills. Wall and ceiling panels, benches, guard rail, and duckboards are all pre-assembled and pre-drilled to fit perfectly. Interior and exterior trim is precisely cut to length. Because it is easily assembled in sections, it is also mobile. Clear, explicit instruction and job-specific drawings remove all the confusion and risk. The assembly is so easy, it's fun!

— FOR HEAVY-USE COMMERCIAL INSTALLATIONS UPGRADE TO THE MCCOY "PRO SERIES" MODULAR

The most heavy-duty modular sauna in the sauna industry. Constructed with 3" framing, a full seven feet of interior height, 4 1/2" framing on the benches, and a handicap accessible door (with low profile threshold) makes this the ideal sauna for heavy-use commercial saunas. The Pro Series is another example of why McCoy is "The Professional's Choice."

— Sauna Door Options

— STANDARD DOOR — F24P

- 2'0" x 6'8" x 1 3/4" door with a 4 5/8" or 5 3/8" jamb. Provide a 26" x 82" rough opening. (A 24" door is generally recommended to maximize bench space and to minimize air movement during passage.)
- Vertical grain Douglas Fir rails for resistance to damage and warping.
- 16" x 67" clear, insulated (double sealed), tempered safety glass. Takes away the "closed-in" feeling of ordinary saunas.
- Pre-hung door includes hinges, roller latches (self-closing hinges optional) and wooden handles.



— OPTIONAL DOORS

- Douglas Fir doors available in 2'0", 2'6", and 3'0". Custom Cedar doors are also available.
- All-glass doors: 1/4" bronze tinted glass no wood on the door itself, mounted on 2" thick cedar jamb. Available 2'0" x 6'0", 2'0" x 6'8", 2'6" x 6'8" and 3'0" x 6'8".
- Douglas Fir doors with fir grid. Same specs as F24P, but with attractive grid insert.



McCoy

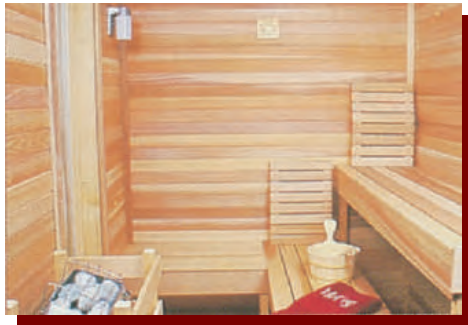
Custom-Cut Saunas



— For the Do-It-Yourselfer and the Contractor

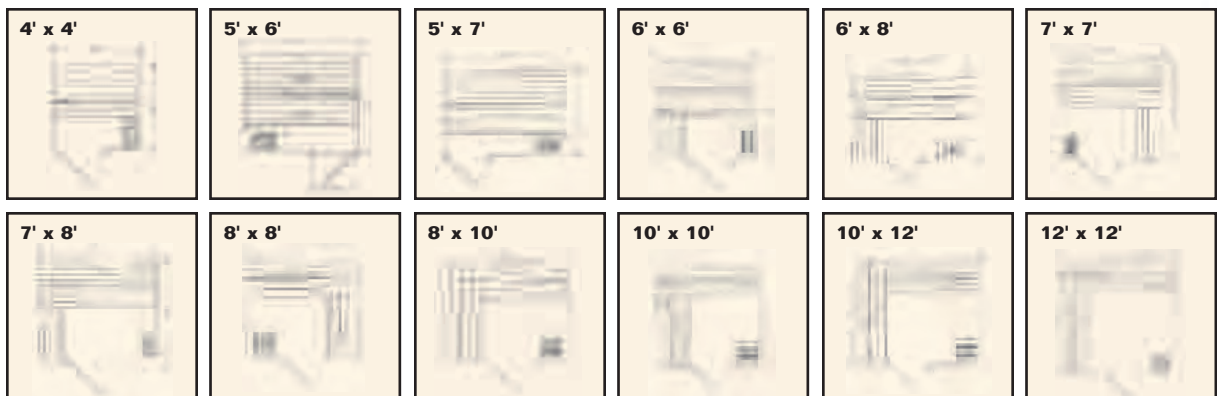
The Custom-Cut interior sauna package contains everything you need to finish and equip the sauna interior after the room has been framed, wired and insulated. Many elements are uniquely included or improved. *This package is flexible to any dimensions and custom modifications.*

WALL AND CEILING PANELING



Walden Pond Condominiums, Pontiac, MI

In addition to the examples of sauna layouts and sizes shown, McCoy offers a limitless variety of standard and custom-made, Custom-Cut and modular sauna rooms. Call 1-800-225-7519 for free CAD design assistance and alternative layouts.





Detroit Lions Headquarters, Allen Park, MI



— Custom-Cut Sauna Packages Include

- 1x4, V-joint, T&G, kiln-dried Western Red Cedar.
- Wall boards are mounted vertically if any wall is longer than 8'.
- Ceiling at 7' to keep the heat downward.

FOIL VAPOR BARRIER

- To improve heat and humidity efficiency.

BASE, CORNER AND CEILING TRIM

BENCHES

- Bench Tops: 1 x 4 W. R. Cedar, standard bench width is 24".
- Bench Face: 1 x 4 W. R. Cedar.
- Bench Framing: 2 x 4 W. R. Cedar (2 x 6 on commercial benches longer than 6') with 1 x 4 clear cedar cross framing.
- Benches come pre-assembled.

HEATER AND CONTROLS

- Heater selected by square and cubic footage. Controls with thermostat, heat indicator light, light switch, and timer.

HEATER GUARD RAIL

- 1 x 4 Western Red Cedar

SAUNA DOOR

- Pre-hung door with 16"x67" window (27"x67" on 3'0" door), handles and hinges.

STANDARD ACCESSORIES PACKAGE

- Bucket, ladle, light and thermometer. See pg. 8

DUCKBOARD FLOORING

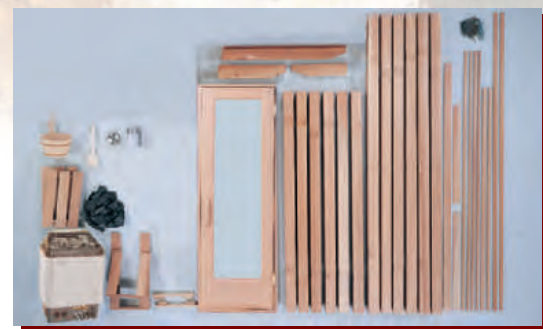
- Western Red Cedar duckboard in walk area. Alternative Dri-Dek vinyl flooring.

INSTALLATION INSTRUCTIONS

- Clear and explicit. For any level of experience.

COMPUTER-AIDED SHOP DRAWINGS

- Top and elevation views.



McCoy *Sauna Heaters*

— The Heart and Soul of your Sauna

McCoy heaters are a combination of modern, European design, and are of the highest quality materials. McCoy heaters are designed to optimize the sauna experience and are the “heart and soul” of your sauna. All McCoy heaters and controls are UL listed to ensure safety and reliability. A large rock capacity, with rocks in direct contact with the heating elements, ensures a “soft heat” and “soft steam” (steam is created by sprinkling water on the pre-heated rocks). McCoy heaters are constructed of rust resistant materials.

— JUNIOR HEATER

For small saunas and tight spaces, the Junior heater combines great European design with easy-to-use digital technology. For saunas up to 150 cubic feet.

- Use with SaunaLogic digital control
- Wall mounted
- 25 lbs. of Vulcanite rocks
- 26"H x 11½" W x 8"D
- 2.1kW and 3kW
- Stainless steel construction

— DESIGNER B HEATER SERIES WITH BUILT-IN CONTROLS

The ‘B’ series has built-in controls (front, left or right side of heater). Wall mounted; for use with saunas up to 425 cu. ft.

- 23"H x 16½"W x 11"D
- Includes 50 lbs. of Vulcanite sauna stones
- Stainless steel outer shroud, stainless steel elements, black anodized aluminum top
- Built-in controls include thermostat and 9+1 timer — with nine hour pre-set time delay, plus one hour operating time
- Controls are mounted on the front of heater, but can be moved to the left or right side for user convenience
- 4.5kW, 6.0kW, or 8.0kW
- For sauna rooms ranging from 100cu. ft. to 425cu. ft.

— DESIGNER S HEATER SERIES WITH SEPARATE CONTROLS

The ‘S’ series is combined with separate, wall mounted controls — to optimize the sauna experience. Wall mounted, for use with saunas up to 425 cu. ft.

- 23"H x 16½"W x 11"D
- Includes 50 lbs. of Vulcanite sauna stones
- Stainless steel outer shroud, stainless steel elements, black anodized aluminum top
- Use with separate controls (C-series of controls)
- 4.5kW, 6.0kW, or 8.0kW
- For sauna rooms ranging from 100 cu. ft. to 425 cu. ft.

— DIGITAL HEATER SERIES

Durable, reliable, and modern are just a few of the characteristics of the digital heater series. The programmable digital controls make this one of McCoy's top heater series.

- Similar in features to the Designer S heater series, with internal electronics added.
- Use with DC60 digital controls

— PRO SERIES HEATER — FLOOR STANDING

McCoy's Pro Series heater is designed for the rugged environment of commercial saunas. Floor standing, constructed of rust resistant materials, it is attractive, yet extremely durable. With 140 lbs. of rocks in direct contact with the heating elements, the heater provides soft gentle heat, and soft gentle steam. For saunas up to 950 cu. ft.

- 27"H x 20"W x 22½"D
- Includes 140 lbs. of Vulcanite sauna stones
- Stainless steel elements, junction box and top
- Stainless steel outer shroud
- Remote control panel (SC-series or Digital-Pro)
- Use with contactor box (CB-series)
- Floor standing
- 10.5kW, 12.0kW, or 14.4kW
- For sauna rooms ranging from 390 cu. ft. to 950 cu. ft.



Designer B



Designer S



Digital



Misty



Pro



MCCOY SPECIALITY HEATERS

— MISTY HEATER SERIES

The Misty offers multiple sauna environments — from the drier and hotter traditional sauna, to the lower temperature, more humid “soft sauna.”

The steam generator is an integral part of the sauna heater. The water supply for the steam generator can be plumbed directly into the unit, or the tank may be manually filled. With the special trough on top of the steam generator, users may also easily add fragrances such as eucalyptus for aromatherapy.

- 6.0kW or 8.0kW sauna heater w/built-in 2.0kW steam generator
- 23"H x 16½"W x 14½"D
- 50 lbs. of Vulcanite sauna stones
- Wall mounted, use with separate SM control
- For sauna rooms ranging from 175 cu. ft. to 425 cu. ft.

— SAUNATIME

As the name “SaunaTime” suggests, this sauna heater is ready for use at all times. Developed to recreate the sauna conditions of ancient wood-burning saunas (lower temperatures, huge rock mass, lots of humidity), its most notable benefit is the soft, moist steam, which comes from the depths of the extra large rock compartment.

- 34"H x 15"W x 19"D
- Separate handheld digital control panel mounted inside the sauna (2½"W x 5½"H)
- Low wattage range (“always on” mode): 135W, 225W or 360W
- Booster element power range: 4.4kW and 5.8kW
- For saunas 175 cu. ft. to 425 cu. ft.



— SC-9 Control

Control with 9+1 timer (60 minutes operating time with nine hour delay), thermostat, light switch and indicator light. Electronic thermostat allows control to be mounted almost any distance from the sauna room. Use with Designer S series heaters and Professional series heaters.

— SC-60

Same as SC-9 except with standard 60 minute timer

— SC-Club

Same as SC-9 except with on/off switch instead of a timer. For use in commercial saunas, only if an attendant is on duty.

— SM Control for Misty

Designed for safety and convenience, the Misty control includes: timer, thermostat with sensing probe, light switch, and three knobs for selecting traditional sauna, lower temperature sauna with steam generator activated, or steam only.

— DC60 Digital Sauna Control

Control displays room temperature and time remaining. Adjustable three button panel includes on/off, temperature setting, and time setting. Standard finishes include white, chrome or brass. Flush mounted. Use with digital heater series. Control must be mounted outside of sauna room. 3⅜"H x 4⅞"W x 1¼"D.

— Digital-Pro Commercial Digital Sauna Control

Seven-day programmable control for use with McCoy's Professional Heater series. Features include: start time and operating time for each day of the week, operating temperature, clock, fan and light switch, tamperproof lock-out feature, and an integral audible hi-temp alarm. Flush mount, 6"H x 5"W x 1¼"D.

— SaunaLogic Control

Easy-to-use, 24-hour programmable control, for use only with McCoy Junior Heater. Adjustable time and temperature, on/off buttons for interior and exterior lights. Surface mount, 8.75" x 5.75" x 1"D.



HEATER MODEL NO.	MINIMUM CU. FT. SAUNA ROOM	MAXIMUM CU. FT. SAUNA ROOM	WATTS	AMPS	VOLTAGE	WIRE SIZE 90°C COPPER	CONTROL MODEL NO.	SHIPPING WEIGHT
Junior 21	45	100	2100	17.5	120	1	SaunaLogic	19
Junior 30	70	150	3000	25.0	120	1	SaunaLogic	19
Junior 30	70	150	3000	12.5	240	1	SaunaLogic	19
Designer 4.5B	100	210	4500	18.8	240	1	Built-In	32
Designer 6.0B	175	310	6000	25.0	240	1	Built-In	34
Designer 8.0B	250	425	8000	33.3	240	1	Built-In	35
Designer 4.5S	100	210	4500	18.8	240	1	SC Series	32
Designer 6.0S	175	310	6000	25.0	240	1	SC Series	33
Designer 8.0S	250	425	8000	33.3	240	1	SC Series	34
Designer 8.0S-3	250	425	8000	22.2	208	3	SC Series	34
Digital 4.5	100	210	4500	18.8	240	1	DC60	32
Digital 6.0	175	310	6000	25.0	240	1	DC60	33
Digital 8.0	250	425	8000	33.3	240	1	DC60	34
Misty 6.0	175	310	6000	25.0	240	1	SM	53
Misty 8.0	250	425	8000	33.3	240	1	SM	53
Pro 10.5	390	600	10500	43.8	240	1		68
Pro 12.0	510	740	12000	50.0	240	1		70
Pro 14.4	630	950	14400	60.0	240	1		75
Pro 10.5-3	390	600	10500	29.2	208	3		68
Pro 12.0-3	510	740	12000	33.3	208	3		70
Pro 14.4-3	630	950	14400	40.1	208	3		75
SaunaTime 44	175	310	4400	18.3	240	1	Built-In	110
SaunaTime 58	250	425	5800	24.2	240	1	Built-In	110

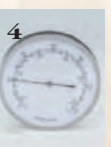
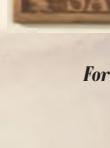
SaunaTime units operate on 130, 220, or 350 Watts for continuous power



Accessories

— Your options are endless

Add extra pleasure to your sauna with these McCoy sauna accessories. Crafted of the finest materials, they'll add years of enjoyment to your sauna.



— Standard Accessories Package

1. Pine Bucket
Wooden Bands/plastic liner MA10
2. Wooden Dipper
Handmade in Finland MA40
3. Sauna Light
Brushed aluminum, wall mounted MA36
4. Thermometer
4" dia., TH4

— Additional Accessories

5. Wooden Bucket with Stainless Steel Insert, 2.5 gallons
6. Stainless Steel Bucket and Ladle
7. Long Handled Bath Brush
8. Bath Brushes, set of two
9. Sand Timer (15 minutes)
10. Headrest, deluxe
11. Eucalyptus Fragrances, 2oz, 8oz, 16oz
12. Gift pack of 8 Fragrances, 50ml ea.; Birch, Pine and Herbal available in 250ml
13. Sauna Soap
14. 5" Chrome Thermometer/hygrometer
15. 7" Brass Thermometer/hygrometer
16. Cedar Sauna Sign (laser etched)

For complete product specifications.

see us at
Sweets.com

McCOY

SAUNA AND STEAM

40100 Grand River, Building A, Novi, Michigan 48375

1-800-225-7519

(248) 476-0111 (in Michigan)

Fax: (248) 476-6015

www.mccoysauna.com • sales@mccoysauna.com

© McCoy 2010

— McCoy Specifications

GENERAL: Sauna room(s) shall be manufactured by McCoy Sauna & Steam, 40100 Grand River Avenue, Building A, Novi-Michigan 48375. The following specifications include design parameters for McCoy prefab/modular saunas, as well as for McCoy Custom-Cut material packages.

Work to be done by others: All work set forth below will be included under other sections for the specifications.

For all McCoy sauna types:

1. Finish painting and/or staining of exterior surfaces.
2. Subfloor and/or foundation work.
3. All electrical work from supply, including connections to control, heater, and light

For McCoy Custom-Cut Saunas:

4. Installation of stud walls (or furring strips) and ceiling joists.
5. Installation of insulation between wall studs and ceiling joists.

CODE REQUIREMENTS: All materials, components, and work shall conform to all applicable local, state, and federal building and safety codes, ordinances and regulations.

TYPE CONSTRUCTION: MCCOY CUSTOM-CUT MATERIAL PACKAGES
(for installation on previously framed walls)

Wall framing shall be on 16" centers. Standard framed wall shall have 2" x 4" studs, bottom base plate treated, and ceiling lowered to 84" I.D. from floor to framing. Existing masonry walls shall have furring strips on 16" centers; metal studs shall have furring strips—for nailing of T&G wall boards.

Walls and ceiling shall be insulated with R11 rated fiberglass insulation, ceiling shall be insulated with R19, with foil vapor barrier (foil provided by McCoy).

When ordering: sauna material package, shall be McCoy model CC_____. Provide interior dimensions of the framed space, indicate direction of ceiling joists, and swing of door.

Walls and ceiling interior materials shall be 1" x 4" (nominal) V-joint, kiln dried to 12% or less, T&G clear clear Western Red Cedar. Boards to be blind nailed using 5p galvanized nails, or comparable galvanized staples. Wallboards applied horizontally unless specified otherwise.

TYPE CONSTRUCTION: McCoy PANEL-BUILT SAUNA PACKAGES (free-standing, modular units).

No framed walls are required for McCoy Panel-Built packages. Install on any level, water proof floor.

Wall and ceiling panels shall be framed of 2" x 2" framing, insulated with fiberglass batts, vapor barrier of Type C Reynolds Building Foil. Panel interior and exterior shall be lined with 1" x 4" (nominal), V-joint, kiln dried, clear European Alder, clear Western Red Cedar or Hemlock. Optional: panel exterior can be 1/4" smooth Luan Plywood on walls to be hidden or walls to be covered with drywall, tile, or wallpaper.

TYPE CONSTRUCTION: ALL TYPES—CUSTOM CUT AND PANEL BUILT.

BENCHES: Shall be preassembled by McCoy. Standard top bench width equals 24" in saunas 5' deep or greater. Bench tops of kiln-dried, clear, all-vertical-grain Western Red Cedar. Internal framing of 2" x 4" cedar. Bench tops fastened from bottom with stainless steel screws. Bench supports of 5/4" x 4" European Alder or 2" x 4" Western Red Cedar. Commercial Sauna Benches: Internal framing 2" x 6" W.R. Cedar on benches over 6', and H-leg bench supports on benches 8' and longer.

BACKRESTS: S4S clear Cedar.

INTERIOR AND EXTERIOR TRIM: Corner and cove molding of clear, kiln-dried Western Red Cedar. Panel-Built saunas also include fascia of same material.

HEATER GUARD RAIL: Shall be constructed of clear Western Red Cedar to surround heater. Dimensions shall match UL requirements for proper spacing between heater and guard rail.

DOOR: Shall be McCoy Model DF (clear, all-vertical grain Douglas Fir rails with sealed, double pane, tempered glass 16" x 67" window, pre-hung on mahogany jamb—available in 24"x80", 30"x80", and 36"x80". Alternative doors are all-glass door with 1/4" bronze tinted tempered glass, mounted on 1 1/2" thick jamb. Available 24"x80", 30"x80" or 36"x80".

HANDICAP ACCESSIBLE COMMERCIAL SAUNA DOORS AVAILABLE: All-glass doors (AG) or Douglas Fir doors (DF) are available in 36" widths. For McCoy Custom Cut saunas handicap door size is 36" x 80"; for McCoy Panel-built saunas handicap door size is 36" x 72".

SAUNA HEATER: Shall be McCoy Model_____, sized according to the size room as shown on page 6-7. Heater shall be UL or ETL listed. Shall include olive igneous rocks.

CONTROLS: Shall be McCoy Model_____, UL or ETL listed, and matched with heater according to chart on page 7.

FLOOR: Floor shall be of cement, ceramic tile, or similar waterproof type (no carpeting). Removable dri-dek flooring or duckboard of Cedar is provided for walk area in front of benches.

LIGHT: Shall be wall-mounted, UL listed, vapor-proof Progress P5511 or Hubbell B2s-Var. Frosted white globe with satin finish, neoprene gasket, brushed aluminum base. Ceiling mounted and low voltage lighting available.

ACCESSORIES: All sauna packages include standard accessories of thermometer, wood bucket and ladle. A wide range of additional accessories are available (see left). All saunas also include headrest, backrest and duckboards.

WARRANTY: All McCoy sauna rooms, heaters and controls are fully warranted for five years for residential use; one year for commercial use against defects in material and workmanship. For further information regarding the McCoy warranty, please contact McCoy.

DESIGN ASSISTANCE: McCoy's design staff will gladly offer any assistance you may require when designing or specifying sauna rooms and heaters. Free CAD design service available.

HANDICAP ACCESSIBILITY: Most of McCoy's panel-built and custom-cut saunas can be made handicap accessible. Contact McCoy for assistance.

McCoy reserves the right to change specifications and design without notice.

© 2010 McCoy Sauna & Steam

Printed in U.S.A.