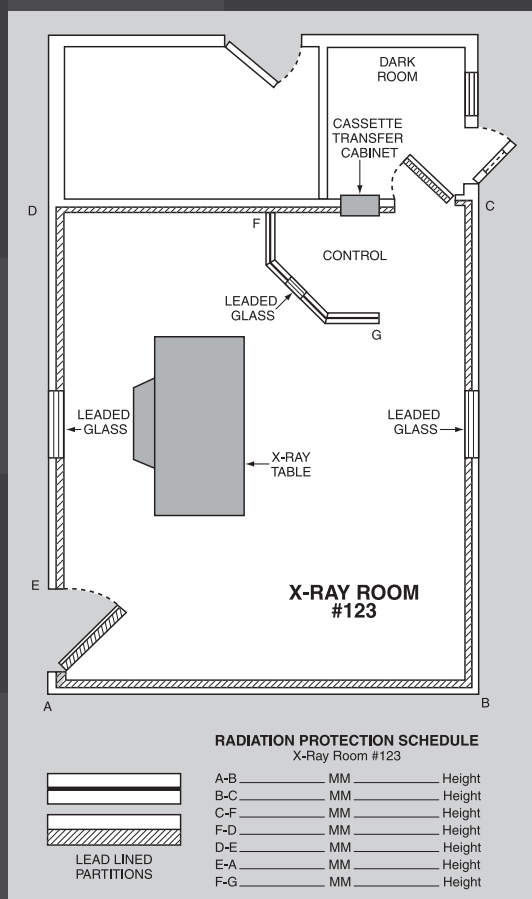


# RADIATION PROTECTION PRODUCTS, INC

**SERVING THE NATION'S LEAD NEEDS FOR OVER 50 YEARS!**

## Architects

Radiation protection material is required in a very technical portion of projects requiring shielding. It is extremely important to have the designation for this material documented precisely and clearly on your drawings. Floor plans specifying lead shielding requirements are the most concise method of designating material desired (see example below). To further simplify and clarify your radiation shielding needs, and to eliminate confusion during installation, lead requirements should be specified in increments of .5mm (1/64") for all practical purposes, with a minimum thickness of .8mm (1/32").



Upon receiving the Physicist report for shielding requirements, always round up to the .5mm thickness. Consideration should also be given to having only one manufacturer of radiation protection material! Radiation Protection Products, Inc. (RPP, Inc.), as a Manufacturer, has the capabilities to manufacture any and all radiation protection materials that may be required. This way there is a single responsible firm for any questions that may arise concerning radiation protection. With all radiation protection materials specified as manufactured by RPP, Inc., you are assured of the best possible job coordination and that you are dealing with a major producer of radiation protection material.

Radiation Protection Products, Inc.



**TOLL FREE: 888-RING-RPP (888-746-4777)**

**FAX: 866-554-8445**

[www.radiationproducts.com](http://www.radiationproducts.com)

# RADIATION PROTECTION PRODUCTS, INC

## STANDARDS

RPP, Inc. manufactures and distributes a full line of radiation shielding products. They include doors (solid core wood, lead lined, and steel strapped), lead lined gypsum board and plywood, leaded glass and acrylic, lead lined frames for borrowed lites and doors, and pass boxes. Lead fabrications include sheet, plate, castings, flashings, wool, shot and bricks, both standard and interlocking.

All shielding products provided meet the following specification:

- **Wood and Plastic Doors:**  
All doors shall meet or exceed the ANSI/NWMA Industry Standard I.S.I.-80, I.S.I.4-80, NCRP Report #49.
- **Sheet Lead:**  
Shall meet or exceed the Federal specification QQL-201F Grade C, see NCRP Report #49, #33, #35.
- **Cassette Transfer Cabinets:**  
Shall meet or exceed MIL-C-3673 (DM).
- **Gypsum Board:**  
Shall meet or exceed ASTM C36, 1396, Federal Specification SS-L-30D Type III Grade X. (Fire-Shield)
- **Lead Glass:**  
Shall meet or exceed Federal specification DD-G-451. Clear-PB%<sub>00</sub> Acrylic also available.

RPP, Inc. manufactures all lead shielding products in accordance with Lead Industries Hand Book and all NCRP Applicable Reports (#33, #35, #39, #40, and #49) and NBS, HB. #114.

## DOORS & FRAMES

RPP, Inc. Doors are manufactured using only the finest materials and workmanship available. With constant quality control and ongoing inspections you are assured of receiving the strongest and most functional radiation shielding doors possible.

RPP, Inc. will manufacture leaded doors to your specifications with leaded glass windows, louvers, and options as listed. We also supply steel braced, lead lined, hollow metal door frames with or without pre-hung doors.

Face Panels of Natural Birch, Red Oak, other Wood Veneers, and Plastic Laminates are available. Lead thickness, to meet your specifications, are from 1/32" to 1/2" in wood doors.

### CUSTOM RADIATION SHIELDING DOORS

- **Pre-Hung:**  
The complete answer to your requirements: Door, frame, hinges, lockset, or latch set with any other accessories you require.
- **Fire-Rated:**  
20 minute constructed as certified by Warnock Hersey.
- **Neutron Shielded Doors:**  
Please call for specification and drawings of this special door, comprised of steel, lead, and borated polyethylene core incased in steel, used for high-energy Linear Accelerator rooms.

### Orders for doors shall include the following information:

- Exact width and height
- Swing
- Lead thickness
- Any options and locations
- Size of lead glass
- Size of louver
- Bevel (i.e. 1/8" in 2", 3")
- On double doors, indicate which leaf to receive astragal
- Finish (veneer or plastic laminate)

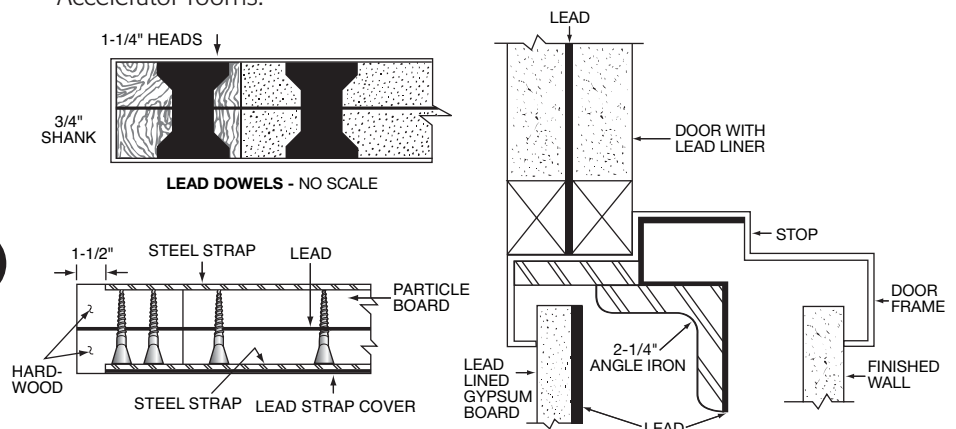
### On pre-hung doors, include the following additional information:

- Wall thickness
- Hinges and number
- Pivots
- Lock set or latch set
- Size of lead glass
- Swing
- Type of frame (i.e. standard hollow metal)
- Lead thickness

Standard Door Sizes Available	Options Available On Any Door
2'0" x 7'0"	Cutout for Lead Glass
2'6" x 7'0"	Cutout for Lead Louver
3'0" x 7'0"	Custom Wood Veneer or Plastic Laminate
3'6" x 7'0"	
4'0" x 7'0"	



TOLL FREE: 888-746-4777  
FAX: 866-554-8445  
www.radiationproducts.com



# RADIATION PROTECTION PRODUCTS, INC

## VIEW WINDOW FRAMES

**NOTE: Don't cut frame opening until frame is at job-site!**

### STEEL TELESCOPIC LEAD LINED

Standard Steel Telescopic Frames match our Hollow Metal Door Frames. All Frames are manufactured to accept any thickness or size of glass or acrylic. Standard Steel Telescopic Frames can be steel braced for maximum strength.

The adjustable lead lined steel frames adjust to a wall thickness of 4-1/4" to 6-1/4". Voice transmission is standard.

Our frames are preferred by the highest rated construction companies, even our competitors, for new and remodeling construction jobs.

### LEAD/SPLAYED CONTROL FRAMES

Manufactured of solid lead 3/16" thick. Will accept up to 1/2" of glass and can have voice passage slot. May be used with overlap face on walls up to 5-3/8" thick over all with frame 5-3/4". All frames come with 1/2" removable stops.

Special construction of lead frames available to meet your specifications (i.e. special steel reinforcement, wider wall thickness, special sizing, etc.)

### ALUMINUM LEAD LINED/SPLAYED

Telescopic Lead Lined with 1/32" to 3/16" lead. Adjusts to walls from 4-1/4" to 6-1/4". With removable stops.

## ORDERING INFORMATION

- Glass Size – width and height
- Glass Thickness
- Baffled Voice Passage
- Wall Thickness

This information is the same for all frames ordered.

## TRANSFER CABINETS

Film transfer cabinets should be installed in partitions where indicated on plans. The entire cabinet, as manufactured, including integral face flange and doors, shall have lead lining equivalent to that provided by the partitions in which the cabinet is placed.

## X-RAY BARRIERS MOBILE & MODULAR

### Moveable, Transparent Radiation Shielding Barriers to Protect Medical Personnel

- Shield medical personnel from secondary radiation.
- Extra-large, distortion-free, lead-plastic windows. Choice of sizes to shield 1, 2 or more persons.
- Attractive, durable, easy to handle. Working personnel in examination rooms, operating rooms, intensive or cardiac care units, mammographic, and nuclear medicine suites require protection from exposure to secondary radiation.

### Clear-Pb™ Mobile X-ray Barriers

provide a full body shield. Their optical-clear, lead-plastic viewing panels provide exceptional visibility and 0.5, 0.8 or 1.0mm lead-equivalent protection. The shatter-resistance and durability of CLEAR-Pb™ ensures long life under heavy use. CLEAR-Pb™ View Line panels leaded X-ray glass barriers. Numerous styles and models. Customizing available. Please call for full details.

## GLASS

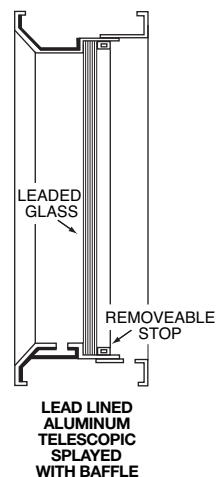
RPP, Inc. Lead Glass is a light amber colored glass, suitable for installation in screens, walls, and doors. This allows viewing of the radiographic procedures.

Glass is available: 1.5mm, 2.1mm, 2.6mm, 3.5mm, or 10.0mm lead equivalence.

### Standard sizes

8" x 10"	48" x 42"
10" x 12"	48" x 48"
12" x 12"	60" x 36"
12" x 16"	60" x 40"
16" x 24"	60" x 42"
18" x 24"	60" x 48"

24" x 24"	72" x 36"
24" x 48"	72" x 40"
30" x 24"	72" x 42"
30" x 30"	72" x 48"
32" x 40"	84" x 36"
36" x 24"	84" x 40"
36" x 30"	84" x 42"
40" x 40"	96" x 42"
48" x 36"	96" x 48" max.
48" x 40"	



Custom Sizes quoted upon request. We cut to your requirements.

## ACRYLIC

### Clear-Pb™ Lead-Acrylic Panels

Available in lead equivalence: 0.3mm, 0.5mm, 0.8mm, 1.0mm, 1.5mm, and 2.0mm. Available in all standard sizes as listed above.

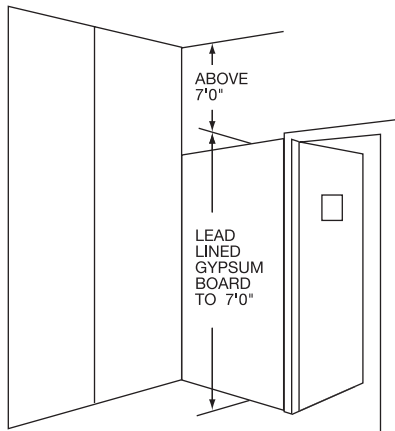


TOLL FREE: 888-746-4777  
FAX: 866-554-8445  
www.radiationproducts.com

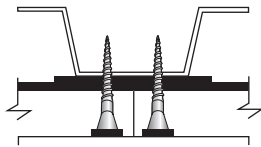
# RADIATION PROTECTION PRODUCTS, INC

## GYPSUM BOARD

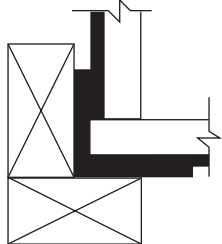
RPP, Inc. uses only Fire Code Gypsum products. Lead Lined Gypsum Board is supplied with lead lining from 1/32" to 1/4" bonded to 1/2" or 5/8" gypsum board. Custom sizes are quoted upon request. Lead lined gypsum is supplied with 2" strips of the same lead thickness and height and 3/8" diameter lead discs.



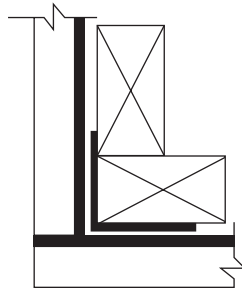
GYPSUM BOARD



3/8" LEAD DISC

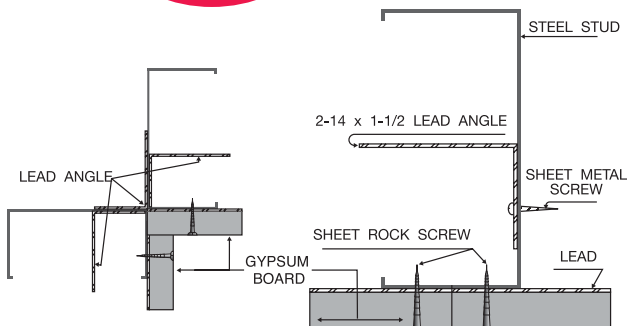
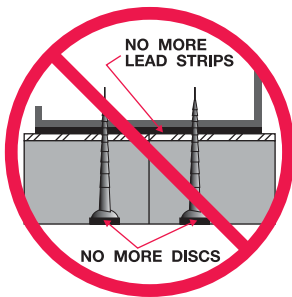


INSIDE CORNER



OUTSIDE CORNER

**"OR"**



### Installation Information:

Lead laminated gypsum wallboard consists of a single un-pierced sheet of lead laminated to the specified thickness of wallboard. The bonding is accomplished with a continuous layer of mastic adhesive. The lead laminated wallboard should be fastened at a minimum of 8" on center at the edges of each sheet, and at a minimum of 12" on center at the intermediate studs. A 2" wide strip of sheet lead of the same thickness should be applied to each of the joint studs prior to installing the wallboard. These strips of sheet lead will provide the necessary 1" overlap with the adjoining sheet. Each fastener will be covered with a lead disc, equal in thickness to the lead laminated to the wallboard to eliminate the possibility of radiation leakage at the point of fastening.

Refer to drawings for the typical methods of installing and fastening Lead laminated wallboard.

### PLASTERBOARD & PLYWOOD ALSO AVAILABLE

- Veneer Plasterboard
- AC Plywood
- CDX Plywood
- Pyro-Guard Plywood – 5/8" & 3/4"

### ONE PIECE LEAK-PROOF SYSTEM

This leak-proof, lead angle system provides complete coverage of gamma rays...and eliminates LEAD STRIPS and DISCS for all lead lined drywall applications. Only at Radiation Protection Products, Inc. Patent Pending.

### SPECIAL PROJECTS

- PET (Positron Emission Tomography)
- Nuclear Medicine
- C.T. Scanner
- Test Cells

**"Experienced Personnel"**

**"PROUDLY ASSOCIATED WITH ONLY THE BEST IN OUR BUSINESS"**



TOLL FREE: 888-746-4777  
FAX: 866-554-8445  
www.radiationproducts.com

see us at  
**Sweets.com**