

615 Series

A07 - Wall to Wall or Ceiling to Ceiling

A09 - Wall to Corner or Wall to Ceiling



Movement Rating ± 50%

Product Guide



Seismic



Exterior



Interior



Fire Rated Option



Vapor Barrier Option



- ▶ Flush mount interior and exterior systems reduce sightline
- ▶ Santoprene® seals - Field heat weldable for weather tight transitions
- ▶ Standard seal colors: black, beige, gray, off white and bright white. Custom colors available upon request.
- ▶ Optional silicone seals available for custom applications/colors
- ▶ 4 component exterior system includes integral backseal

Application	System	W		H1		H2		S		B		Movement +/-			
		Joint Width		Frame Height 1		Height 2		Sightline		Blockout		Horizontal		Vertical	
		US	mm	US	mm	US	mm	US	mm	US	mm	US	mm	US	mm
Wall/Wall Ceiling/Ceiling	615-A07-050	2"	51	2 3/8"	60	*	*	2"	51	*	*	1"	25	1"	25
	615-A07-075	3"	76	2 3/8"	60	*	*	3"	76	*	*	1 1/2"	38	1 1/2"	38
	615-A07-100	4"	102	2 3/8"	60	*	*	4"	102	*	*	2"	51	2"	51
	615-A07-150	6"	152	2 3/8"	60	*	*	6"	152	*	*	3"	76	3"	76
Wall/Corner Wall/Ceiling	615-A09-050	2"	51	2 3/8"	60	*	*	2"	51	*	*	1"	25	1"	25
	615-A09-075	3"	76	2 3/8"	60	*	*	3"	76	*	*	1 1/2"	38	1 1/2"	38
	615-A09-100	4"	102	2 3/8"	60	*	*	4"	102	*	*	2"	51	2"	51
	615-A09-150	6"	152	2 3/8"	60	*	*	6"	152	*	*	3"	76	3"	76

May be available in larger widths, please contact InPro Corporation for more details.

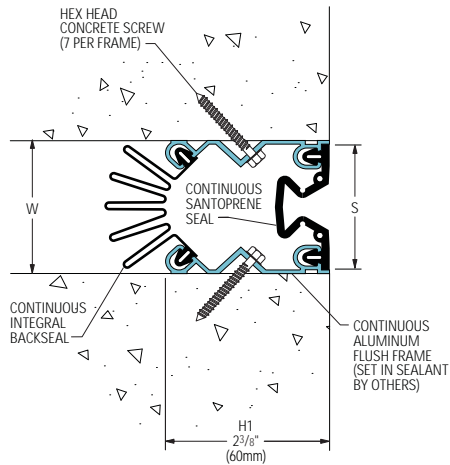
IPC.1200/REV.2

P.O. Box 406 • Muskego, Wisconsin 53150 USA
 inprocorp.com
 Nationwide 800.222.5556/Fax 888.715.8407
 International Sales 262.679.5521/Fax 262.679.5524

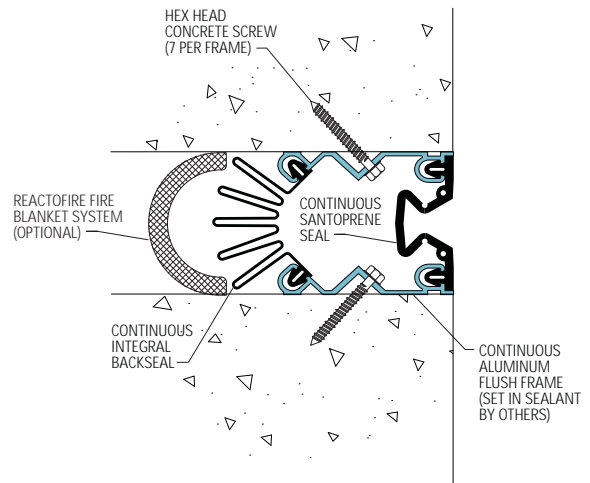
InPro
JOINTMASTER
 Engineered Metal Products
 A Division of InPro Corporation®

615 Series Flush Mount Wall and Ceiling Systems

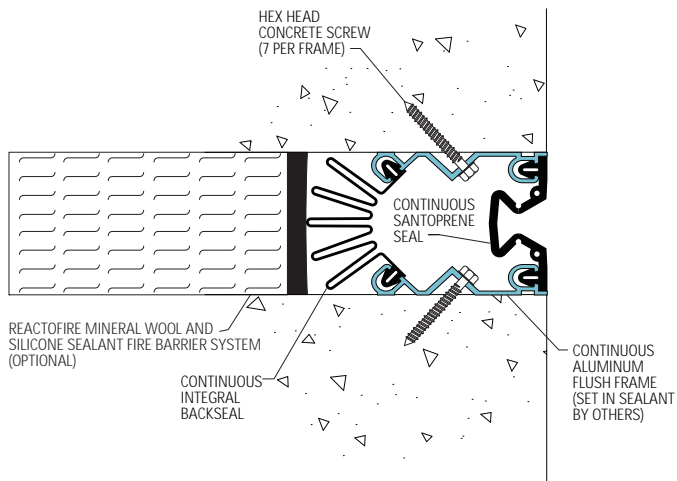
615-A07 Wall/Wall Ceiling/Ceiling
(2" (50mm) system shown)



Reactofire Fire Blanket System
(615-A07-050 system shown)



Reactofire Mineral Wool &
Sealant Fire Barrier System
(615-A07-050 system shown)



600 Series

Suggested Specifications

PART 1 - GENERAL

1.01 SUMMARY

A. Furnish Expansion Joint Systems in accordance with the drawings and general provisions of the Contract.

1.02 WORK INCLUDED

A. Furnish complete JointMaster/InPro Corporation Expansion Joint Systems.

1. Interior floor expansion joint systems.
2. Interior wall expansion joint systems.
3. Interior ceiling expansion joint systems.
4. Roof expansion joint systems.
5. Exterior wall expansion joint systems.
6. Exterior floor expansion joint systems.
7. Parking deck expansion joint systems.
8. Fire Rated Assemblies.

1.03 RELATED WORK

A. Related work which is specified elsewhere.

1. Cast-In-Place Concrete: Section 03300.
2. Unit Masonry: Section 04810.
3. Structural Steel: Section 05120.
4. Lightgauge Metal Framing: Section 05400.
5. Roof Expansion Assemblies - 07716
6. Sheet Metal Flashing and Trim: Section 7620.
7. Cement Plaster: Section 09210.
8. Gypsum Wallboard: Section 09260.

1.04 REFERENCES

A. Publications listed herein are part of this specification to the extent referenced. The criteria established in the specifications shall take precedence over the standards referenced herein. (An example of a reference standard is given below.)

1. American Society for Testing and Materials (ASTM):

a. ASTM B 221, Standard Specifications for Aluminum and Aluminum-Alloy Extruded Bars, Rods, Wire, Shapes, and Tubes.

1.05 DEFINITIONS

A. Define industry and product terms as necessary.

1.06 SYSTEM DESCRIPTION

A. Joint systems shall permit limited movement of joint without disengagement.

1. Specify x-axis joint movement (horizontal).
2. Specify y-axis joint movement (vertical).
3. Specify z-axis joint movement (lateral).

B. Allowable load on floor joint cover plate shall be [50] [100] [200] psf uniform load and [300 pounds concentrated load] [2,000 pounds concentrated load for heavy duty systems] with maximum 12,000 psi stress (6063-T5 aluminum extrusions) or 28,000 psi stress (6061-T6 aluminum plate) or 16,000 psi stress (5052-H32 aluminum sheet) or 36,000 psi stress (stainless steel plate) at full open position.

1. Deflection shall be [1/16] [1/8] inch at neutral position.
2. In the absence of load selections the minimum load will apply - [50] psf with [1/8] inch deflection.

C. Fire Rated Assemblies shall have been tested by Underwriters Laboratories, in accordance with [ANSI/UL No. 263 and ASTM E 119/E 814] [UL 2079] [including hose stream test at full rated period]. Underwriter's Laboratories shall classify assemblies. Fire rating shall be 2 hours or not less than the fire rating of adjacent construction.

1.07 QUALITY ASSURANCE

A. Manufacturer: Furnish assemblies from one (1) manufacturer with a minimum of five (5) years of experience in the design, engineering and fabrication of expansion joint systems.

B. Installer: Firm with not less than three (3) years of successful experience in the installation of systems

similar to those required by this project and acceptable to the manufacturer of the system.

1.08 SUBMITTALS

A. Manufacturer's specifications, technical data, installation instructions, and detail drawings for each system.

B. Certificates or other documentation confirming UL approved compliance with fire resistance rating of fire barrier assemblies.

C. Sample of specified systems where required.

1.09 DELIVERY AND STORAGE

A. Provide temporary protective covers on [anodized aluminum] [stainless steel] finished surfaces.

B. Deliver joint systems to jobsite in new, clean, unopened cartons or crates of sufficient size and strength to protect materials during transit.

C. Store components in original containers in a clean, dry location.

1.10 SEQUENCING

A. Submittals shall be completed and submitted within a reasonable amount of time after award of subcontract.

B. Subcontract for the work of this section shall be planned to allow sufficient time for manufacturer's production and delivery scheduling.

1.11 WARRANTY

A. Standard JointMaster/InPro Corporation limited warranty against material and manufacturing defects for a period of not less than three (3) years when installed in accordance with manufacturer's recommendations.

PART 2 - PRODUCTS

2.01 MANUFACTURER

A. JointMaster/InPro Corporation
S80 W18766 Apollo Drive
Muskego, WI 53150 USA
Phone: (800) 222-5556
Fax: (888) 715-8407
Email: service@inprocorp.com

B. Substitutions: Not permitted.

C. Requests for substitutions will be considered in accordance with provisions of section 01600.

2.02 MATERIALS

A. Aluminum: ASTM B 221, alloy 6063-T6.

B. Stainless Steel Plates (optional): SS304.

C. Roof Bellows: EPDM bellows with galvanized flanges. [Neoprene Bellows] [Aluminum Flanges] [Stainless Steel Flanges] [Copper Flanges]

D. Elastomeric Seal (on series 615/616): Single or dual durometer Santoprene or equal. Colors to be selected from manufacturer's standard range - Black, Gray, Beige and Off-White. Custom colors available.

E. Silicone Seal (optional on Series 615/616): Color as selected by architect.

F. Vapor Barrier/Backseal: 40 mils thick PVC or 30 mils thick EPDM.

G. Fire Barrier (optional): [Reactofire 900 Blanket System to UL2079 with hose stream test to walls] or [Reactofire 920 Mineral Wool and Silicone Sealant System to UL2079] required for indicated fire resistance rating.

H. Fasteners, accessories and other materials required for complete installation in accordance with the manufacturer's instructions.

I. Centering Bars on systems shall have semi-spheres which engage in the frame.

2.03 Exterior Joint Systems for Walls and Roofs

A. Exterior seismic systems: JointMaster 600 Series - Aluminum frame with continuous center plate or

Santoprene seal

1. Exterior Wall Systems

a. Flush mount frame with bellows seal, wall/wall - 611-A07
Flush mount frame with bellows seal, wall/corner - 611-A09

b. Flush mount frame with bellows seal and backseal, wall/wall - 615-A07
Flush mount frame with bellows seal and backseal, wall/corner - 615-A09

c. Flush mount frame with bellows seal and backseal, Pantograph system for extra wide joints, wall/wall - 616-A07

Flush mount frame with bellows seal and backseal, Pantograph system for extra wide joints, wall/corner - 616-A09

d. Surface mount frame with EPDM vapor barrier, wall/wall - 651-A07,
Surface mount frame with EPDM vapor barrier, wall/corner - 651-A09

2. Roof Systems

a. Curb mounted frame with center plate and EPDM vapor barrier, roof/roof - 661-A01
Curb mounted frame with center plate and EPDM vapor barrier, roof/wall - 661-A02

b. Bellows seismic system with galvanized mounting flanges, roof/roof 672-G01
Bellows seismic system with galvanized mounting flanges, roof/wall 672-G02

c. Bellows seismic system with galvanized mounting flanges, roof curb/roof curb - 674-G01
Bellows seismic system with galvanized mounting flanges, roof curb/wall - 674-G02

2.04 FABRICATION

A. Field assemble components provided in standard lengths with pre-packaged fasteners and accessories.

B. Fabricate special transitions and corner fittings as required. Miter and weld elastomeric seal as applicable.

2.05 FINISHES

A. Aluminum:

1. Roofs and Walls: Mill finish.

B. Stainless Steel: 2B

PART 3 - EXECUTION

3.01

A. Verify that structural gap and blockout dimensions are in conformance with manufacturer's submittal data.

3.02 INSTALLATION

A. Joint systems: Install in accordance with manufacturer's instructions. Align work plumb, level and flush with adjacent surfaces. Rigidly anchor to substrate. Allowances should be made where actual structural gap at time of installation varies from nominal design gap.

B. Set centering bars @ 18 inches on center. Centering bars shall engage in the frame.

C. Fire Rated Assemblies: Where required, install to manufacturer's instructions.

D. Vapor Barrier: Where required, install to manufacturer's instructions. Provide drainage fittings where required.

3.03 PROTECTION AND CLEANING

A. Protect installation from damage by work of others.

B. At completion of the installation, clean exposed surfaces with non-solvent cleaner.