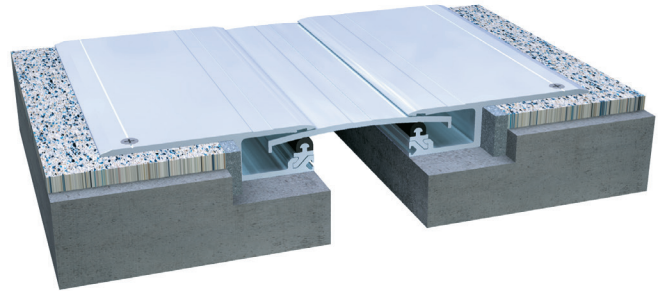


312 Series

A01 - Floor to Floor

A02 - Floor to Wall



Movement Rating ± 50%

Product Guide



Interior



Seismic



Fire Rated
Option



Vapor Barrier
Option

- ▶ Minimal blockout coupled with surface mount flanges ideal for renovations.
- ▶ Surface mount flanges damaged floor edges
- ▶ Glide Plate allows for full seismic movement
- ▶ Flange design keep fasteners away from edges
- ▶ Clear anodized finish standard, can be primed, painted, or anodized to match adjacent flooring
- ▶ Standard loading capabilities
- ▶ Frame gaskets eliminate transfer rattle

Application	System	W		H1		H2		S		B		Movement +/-			
		Joint Width		Frame Height 1		Height 2		Sightline		Blockout		Horizontal		Vertical	
		US	mm	US	mm	US	mm	US	mm	US	mm	US	mm	US	mm
Floor to Floor	312-A01-050	2"	51	1"	25	*	*	10 1/8"	257	1 7/8"	48	1"	25	1/2"	13
	312-A01-075	3"	75	1"	25	*	*	13 1/8"	332	2 7/8"	73	1 1/2"	38	1 1/2"	38
	312-A01-100	4"	102	1"	25	*	*	14 1/8"	358	2 7/8"	73	2"	51	1"	25
Floor to Wall	312-A02-050	2"	51	1"	25	*	*	6"	152	1 7/8"	48	3/8"	10	1/4"	6
	312-A02-075	3"	75	1"	25	*	*	7"	178	1 7/8"	48	9/16"	14	3/8"	10
	312-A02-100	4"	102	1"	25	*	*	9"	229	2 7/8"	73	3/4"	19	1/2"	13

IPC.834/REV.7

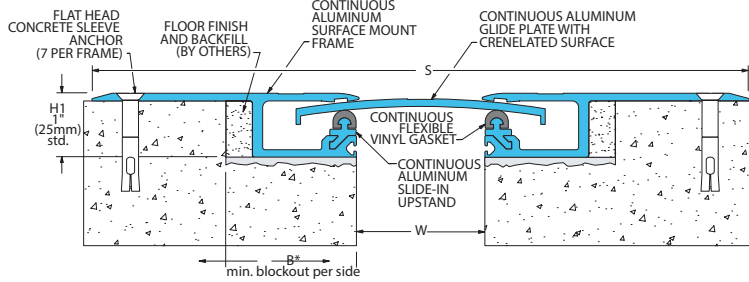
Inprocorp.com • 800.222.5556 • 262.679.9010
 World Headquarters S80 W18766 Apollo Drive, Muskego, WI 53150 USA

JOINTMASTER™
 EXPANSION JOINT SYSTEMS
 A DIVISION OF INPRO

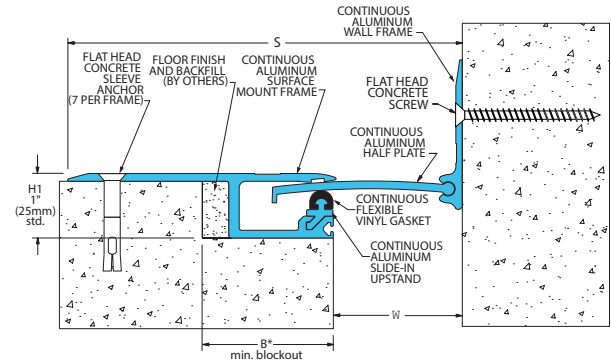
312 Series

Surface Mount Glide Plate Floor Systems

312-A01 Floor/Floor
(2" (50mm) system shown)

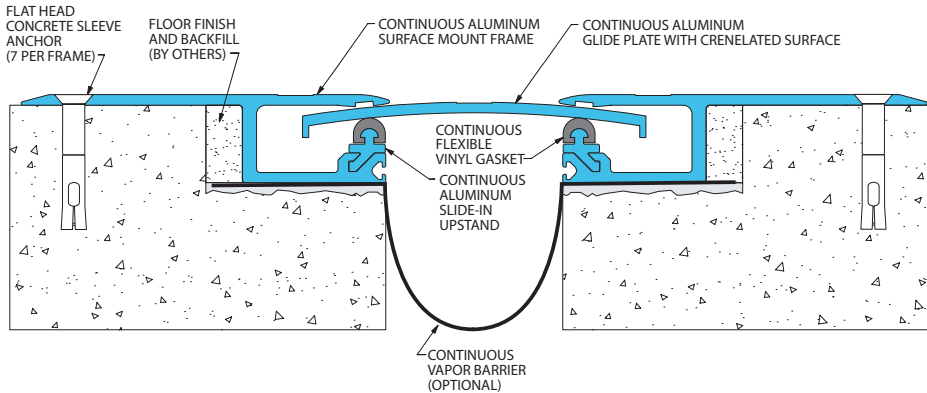


312-A02 Floor/Wall
(2" (50mm) system shown)

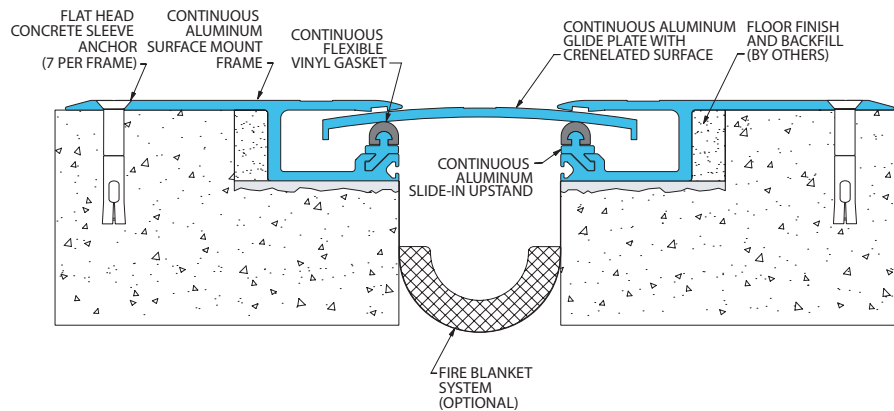


312 Series Options

Integral Vapor Barrier
(312-A01-050 system shown)



Fire Blanket System
(312-A01-050 system shown)



300 Series

Suggested Specifications

PART 1 - GENERAL

1.01 SUMMARY

A. Furnish Expansion Joint Systems in accordance with the drawings and general provisions of the Contract.

1.02 WORK INCLUDED

A. Furnish complete JointMaster/InPro Corporation Expansion Joint Systems.

1. Interior floor expansion joint systems.
2. Interior wall expansion joint systems.
3. Interior ceiling expansion joint systems.
4. Exterior wall expansion joint systems.
5. Exterior floor expansion joint systems.
6. Parking deck expansion joint systems.
7. Fire Rated Assemblies.

1.03 RELATED WORK

- A. Related work which is specified elsewhere.
1. Cast-In-Place Concrete: Section 03300.
 2. Unit Masonry: Section 04810.
 3. Structural Steel: Section 05120.
 4. Light Gage Metal Framing: Section 05400.
 5. Roof Expansion Assemblies - 07716
 6. Sheet Metal Flashing and Trim: Section 7620.
 7. Cement Plaster: Section 09210.
 8. Gypsum Wallboard: Section 09260.

1.04 REFERENCES

- A. Publications listed herein are part of this specification. See below for standards where applicable to the product listed:
1. American Society for Testing and Materials (ASTM):
 - a. ASTM B 221, Standard Specifications for Aluminum and Aluminum-Alloy Extruded Bars, Rods, Wire, Shapes, and Tubes.
 - b. ASTM B 209 "Standard Specifications for Aluminum and Aluminum Alloy Sheet and Plate."
 - c. ASTM E 1399 "Cyclic Movement and Measuring of Minimum/Maximum Joint Widths of Architectural Joint Systems."

1.05 DEFINITIONS

A. Define industry and product terms as necessary.

1.06 SYSTEM DESCRIPTION

- A. Joint systems shall permit limited movement of joint without disengagement.
1. Specify x-axis joint movement (horizontal).
 2. Specify y-axis joint movement (vertical).
 3. Specify z-axis joint movement (lateral).
- B. Allowable load on floor joint cover plate shall be 500 lbs. for standard loads, 1000 lbs. for moderate loads, and 2000 lbs. for heavy duty loads.
- C. Fire Rated Assemblies shall meet requirements of Underwriters Laboratories, in accordance with [ANSI/U.L. No. 263 and ASTM E 119/E 814] [UL 2079] [including hose stream test at full rated period]. Underwriter's Laboratories shall classify assemblies. Fire rating shall be not less than the fire rating of adjacent construction.

1.07 QUALITY ASSURANCE

- A. Manufacturer: Furnish assemblies from one (1) manufacturer with a minimum of five (5) years of experience in the design, engineering and fabrication of expansion joint systems.
- B. Installer: Firm with not less than three (3) years of successful experience in the installation of systems similar to those required by this project and acceptable to the manufacturer of the system.

1.08 SUBMITTALS

- A. Manufacturer's specifications, technical data, installation instructions, and detail drawings for each system.
- B. Certificates or other documentation confirming UL approved compliance with fire resistance rating of fire barrier assemblies.

C. Sample of specified systems where required.

1.09 DELIVERY AND STORAGE

- A. Provide temporary protective covers on [anodized aluminum] [stainless steel] finished surfaces.
- B. Deliver joint systems to jobsite in new, clean, unopened cartons or crates of sufficient size and strength to protect materials during transit.
- C. Store components in original containers in a clean, dry location. Inspect materials upon arrival, monitor for adverse environmental impacts.

1.10 SEQUENCING

- A. Submittals shall be completed and submitted within a reasonable amount of time after award of subcontract.
- B. Subcontract for the work of this section shall be planned to allow sufficient time for manufacturer's production and delivery scheduling.

1.11 WARRANTY

- A. Standard JointMaster/InPro Corporation limited warranty against material and manufacturing defects for a period of not less than three (3) years when installed in accordance with manufacturer's recommendations.

PART 2 - PRODUCTS

2.01 MANUFACTURER

- A. JointMaster/InPro Corporation
580 W18766 Apollo Drive
Muskego, WI 53150 USA
Phone: (800) 222-5556
Fax: (888) 715-8407
Email: service@inprocorp.com
- B. Substitutions: Not permitted.

2.02 MATERIALS

- A. Aluminum: ASTM B 221, alloy 6063-T6, alloy 5052-H32.
- B. Stainless Steel Frame Caps and Plates (optional): SS304
- C. Vinyl Gasket (Series 300, 304 and 312): Flexible Thermoplastic Sound Dampening Vinyl Gasket Required. Color - Black.
- D. Vapor Barrier (optional): 45 mils thick fabric reinforced EPDM or integral extruded PVC.
- E. Insulated Vapor Barrier (optional): Owens Corning EcoTouch Batt insulation sandwiched by an adhered and pinned 45 mil fabric reinforced EPDM.
- F. Fire Barrier (optional): [925 Mineral Wool and Sealant System to UL2079] [935 Textiled Wool and Silicone Sealant System to UL2079] [950 Blanket System to UL2079 with hose stream test to walls] [950 Blanket System to UL2079 with hose stream test to walls] or [990/995 Foam System to UL2079 with hose stream test to walls] required for indicated fire resistance rating.
- G. Fasteners, accessories and other materials required for complete installation in accordance with the manufacturer's instructions.

2.03 INTERIOR JOINT SYSTEMS FOR FLOORS, WALLS AND CEILINGS

- A. JointMaster 300 Series - Thermoplastic Vinyl Gasket: Vinyl gaskets required to reduce wear on the underside of the glide plate and act as a sound dampener.
- B. JointMaster 300 Series - System Profiles:
1. Floor Systems - Recessed/Flush Mount, Floor/Floor or Floor/Wall
 - a. 300-A01 or A02, frame height 1" [25mm] with arched glide plate, suitable for all floor finishes.
 - b. 304-A01 or A02, frame height 1 1/8" [25.575mm] with arched glide plate, accepts 1/8" floor finishes.
 - c. 316-A01 or A02, frame height 2" [51mm] with 1" [25mm] sightline, accepts carpet finish.
 - d. 312-A01 or A02, frame height 1" [25mm] including

surface mounted flanges (system does not install flush) with arched glide plate, suitable for all floor finishes.

2. Floor Systems - New to Existing (Renovation), Floor/Floor
 - a. 320-A01, frame height 1" [25mm] on one side and surface mount on the other with arched glide plate, suitable for all floor finishes.
 3. Wall/Ceiling Systems - Recessed/Flush Mount, Wall/Wall (and Ceiling/Ceiling) or Wall/Corner (and Ceiling to Wall)
 - a. 300-A07 or A09, frame depth 5/8", accepts drywall finishes (or any finish when surface mounted).
 - b. 318-A07 or A09, frame depth 5/8", accepts drywall finishes and vinyl wall coverings.
- C. JointMaster 300 Series - System Accessories:
- a. Fabric Reinforced Vapor Barrier for horizontal and vertical applications (as required).
 - b. Insulated Vapor Barrier for horizontal and vertical applications (as required).
 - c. Drainage Fittings for horizontal and vertical applications (as required).

2.04 FABRICATION

- A. Field assemble components provided in standard lengths with pre-packaged fasteners and accessories.
- B. Fabricate special transitions and corner fittings as required.

2.05 FINISHES

- A. Aluminum:
 1. Floors: Mill finish.
 2. Walls and Ceilings: Standard Class II Clear Anodized [Color Anodized] [Mill] [Kynar Painted] [Custom Color Painted] optional.
- B. Stainless Steel: 2B

PART 3 - EXECUTION

3.01

- A. Verify that structural gap and blockout dimensions are in conformance with manufacturer's submittal data. See manufacturer for recommended tolerances.

3.02 INSTALLATION

- A. Joint systems: Install in accordance with manufacturer's instructions. Align work plumb, level and flush with adjacent surfaces. Rigidly anchor to substrate. Allowances should be made where actual structural gap at time of installation varies from nominal design gap. No shimming allowed.
- B. Fire Rated Assemblies: Where required, install to manufacturer's instructions.
- C. Vapor Barrier: Where required, install to manufacturer's instructions. Provide drainage fittings where required.

3.03 PROTECTION AND CLEANING

- A. Protect installation from damage by work of others.
- B. At completion of the installation, clean exposed surfaces with non-solvent cleaner.
- END OF SECTION

IPC.826/REV.5

Inprocorp.com • 800.222.5556 • 262.679.9010

World Headquarters S80 W18766 Apollo Drive, Muskego, WI 53150 USA

JOINTMASTER™
EXPANSION JOINT SYSTEMS
A DIVISION OF INPRO®