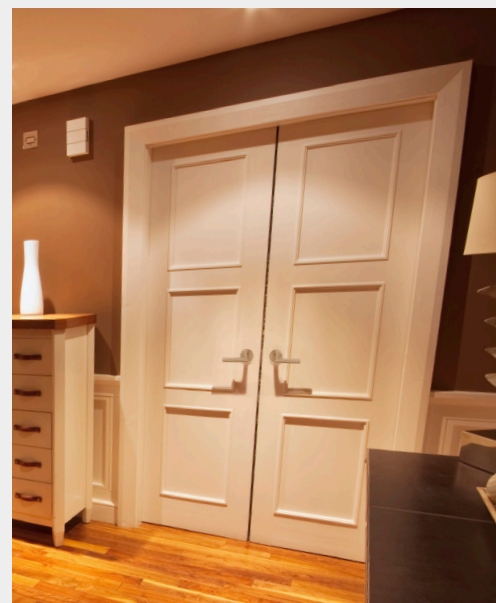




LM9200 Series

Two-point latch for
wood door applications



The Schlage LM9200 Series is an innovative one or two point latch solution for pairs of wood doors where both leaves need to be active. Instead of traditional concealed rods, the LM9200 utilizes concealed vertical cables—a proven technology that enables simple installation and maintenance. Furthermore, the LM9200 is based on the Schlage L Series mortise lock - a foundation built on unsurpassed reliability, flexibility, and performance.

Aesthetics are a key component of any project. Sectional (rose) trim offers the clean aesthetic preferred by most architects; the Schlage LM9200 is compatible with sectional trim as well as escutcheon trim. Furthermore, all the lever designs suite with the Schlage L mortise lock, Schlage LT tubular lock, and Von Duprin exit devices to ensure a consistent and stylish aesthetic throughout the facility. With the Schlage LM9200, you also never have to worry about unsightly metal wraps for fire protection or backer plates for use on wood doors.

The unique design of the Schlage LM9200 offers a number of advantages. Installation is simple - thread the cable through the door and insert into the lock body, then use the patented spool system to remove the cable slack. Automatically deadlatching top and bottom latches, and a top latch with greater than 90 degree strike engagement, work together to ensure the opening is robust and secure. The Schlage LM9200 Series is also available without the bottom latch for top latch only applications.

Key features

- Concealed vertical cables instead of rods for easy installation and adjustment
- 13 functions (mechanical and electrical) for easy application integration
- Over 30 lever designs that suite with Schlage L mortise locks, Schlage LT tubular locks, and Von Duprin exit devices for a consistent aesthetic throughout the facility
- Compatible with both sectional (rose) and escutcheon trim
- Compatible with non fire rated doors 6'8" to 10'0"; fire rated doors 6'8" to 8'0"
- Available 45 minute UL fire rating (two-point latch) or 20 minute UL fire rating (one-point latch). Note: requires fire rated wood doors
- Electrified lock offers 0.4 amp maximum current draw with 0.01 amp holding current; autodetecting 12/24V DC operation and customer-selectable EL/EU switch located on mortise case

Product detail

- 1** Latches are designed for optimized door prep, retaining the structural integrity of the door
- 2** Concealed vertical cables instead of rods for quick installation & adjustment
- 3** Accessible adjustment from edge of door
- 4** Self-adjusting bottom bolt that deadlocks in any adjustment position providing enhanced security

Ordering instructions

L Series mortise indicators

Function + cylinder + firerating	Trim	Finish	Handing	Opening Height	Option code
LM9250PF	O6A	626	RH	6'10"	LBL

Lock specifications

Function Mechanical: LM9210 Passage, LM9225 Exit, LM9250 Office/entry; LM9256 Office/entry with automatic unlock, LM9270 Classroom, LM9271 Classroom security, LM9280 Storeroom
 Electrical: LM9290EL/EU, LM9291EL/EU, LM9292EL/EU, LM9293EL/EU, LM9295EL/EU

Cylinder	P (Everest 29 standard cylinder) L (Less cylinder)	R (Everest 29 FSIC) J (Less FSIC) T (Construction FSIC)	GD (Everest 29 SFIC) BD (Less SFIC) BDC (Disposable SFIC) HD (Construction SFIC)
----------	---	---	---

Fire rating Specify 'F' for fire rated door hardware (Note: requires fire rated wood door)

Trim Standard levers: 01, 02, 03, 05, 06, 07, 12, 17, 18, ACC, AST, LAT, LON, MER, OME, STA
 Decorative levers: M51, M52, M53, M54, M55, M56, M57, M61, M62, M63, M81, M82, M83, M84, M85
 A, B, or C Sectional (Rose) trim; L or N escutcheon; AVA rose (AST lever only) and MER rose (MER lever only)

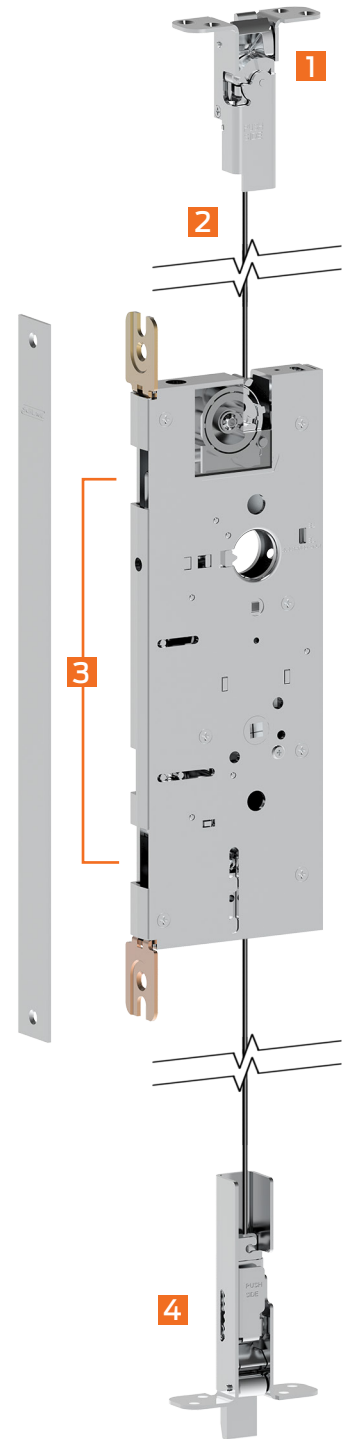
Finish	605 Bright brass 606 Satin brass 609 Satin brass, blackened 612 Satin bronze* 613 Oil rubbed bronze* 619 Satin nickel 625 Bright chrome	626 Satin chrome 626AM Satin chrome anti-microbial 629 Bright stainless steel 630 Satin stainless steel 630AM Satin stainless steel anti-microbial 643e Aged bronze
--------	---	--

Handing LH (Left Hand), LR (Left Hand Reverse), RH (Right Hand), RR (Right Hand Reverse)

Door opening height Specify door opening height (distance from bottom of frame header to finished floor)
 6'8" - 10'0" - non fire rated doors
 6'8" - 8'0" - fire rated doors

Option Specify "LBL" if ordering less bottom latch (product will latch in top only). See pricebook for additional options.

* 612 and 613 finishes not available on Decorative M collection levers.



Product suiting

The Schlage LM9200 series is specifically designed to suite with the following products:



Von Duprin 98/99 exit devices

Grade 1

Von Duprin created the first exit device in 1908, and continues to redefine the industry today with unsurpassed quality and industry-unique features such as concealed vertical cables. The 98/99 Series exit device is intended for standard-stile doors.



Von Duprin 33A/35A exit devices

Grade 1

Offering the same innovative features as the 98/99, the 33A/35A Series is intended for narrow stile doors.



Schlage L Series mortise locks

Grade 1

Schlage L Series locks have long been the industry standard for mortise locks, with a comprehensive offering of functions and options to support any opening need.

Schlage LT Series tubular locks

Grade 2

The perfect compliment to the Schlage L or LM Series and Von Duprin exit devices. The LT Series tubular lock provides a consistent look and feel at a lower price point for less demanding applications.