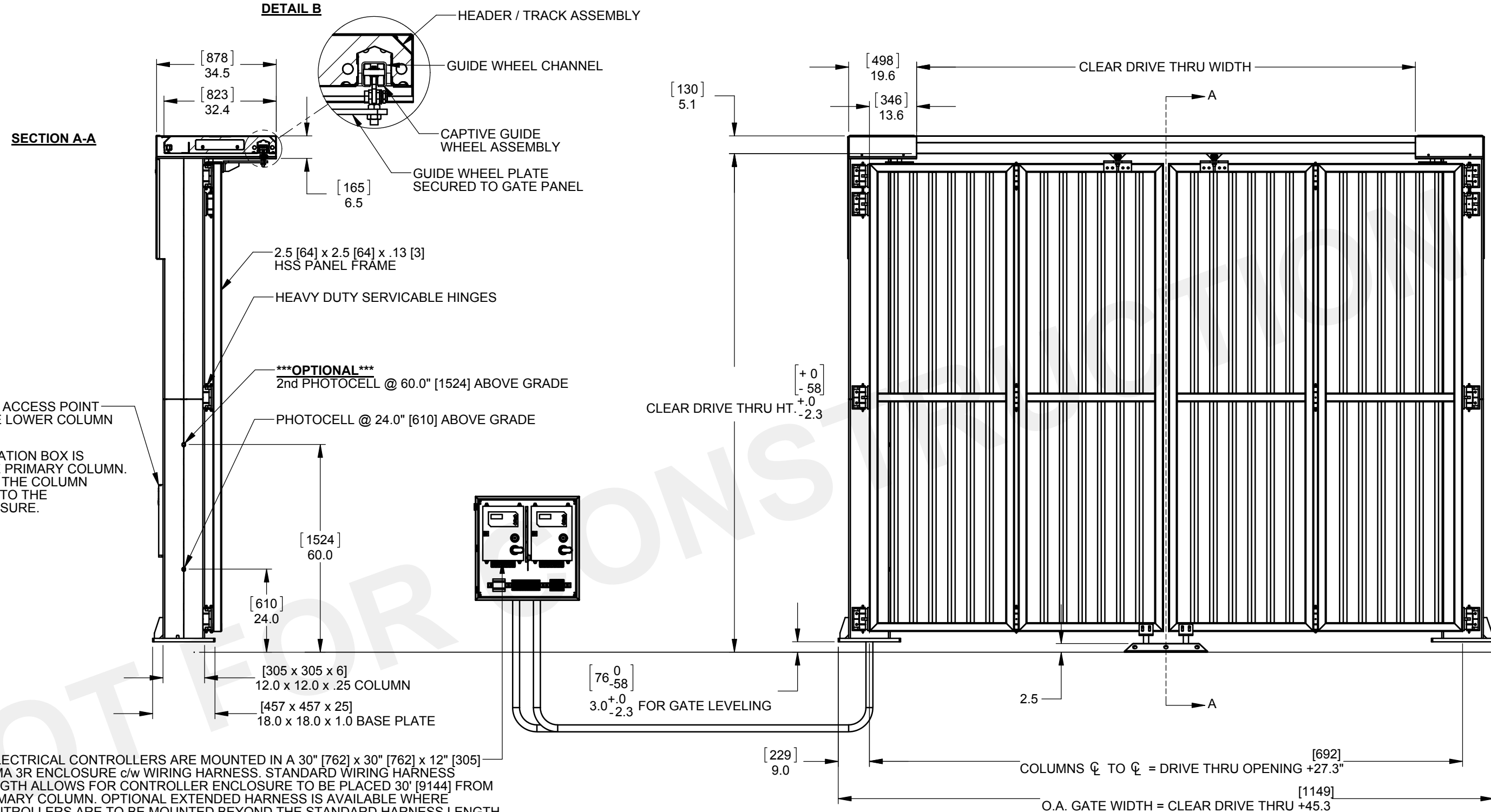


SECTION A-A

DETAIL B



NOTE:

- MANUAL OPERATION ACCESS POINT LOCATED INSIDE THE LOWER COLUMN ACCESS DOOR

- ELECTRICAL TERMINATION BOX IS LOCATED INSIDE THE PRIMARY COLUMN. PRIMARY COLUMN IS THE COLUMN LOCATED CLOSEST TO THE CONTROLLER ENCLOSURE.

2 ELECTRICAL CONTROLLERS ARE MOUNTED IN A 30" [762] x 30" [762] x 12" [305] NEMA 3R ENCLOSURE c/w WIRING HARNESS. STANDARD WIRING HARNESS LENGTH ALLOWS FOR CONTROLLER ENCLOSURE TO BE PLACED 30' [9144] FROM PRIMARY COLUMN. OPTIONAL EXTENDED HARNESS IS AVAILABLE WHERE CONTROLLERS ARE TO BE MOUNTED BEYOND THE STANDARD HARNESS LENGTH. CONTACT WALLACE INTERNATIONAL FOR DETAILS. MAXIMUM DISTANCE FROM CONTROLLER ENCLOSURE TO PRIMARY COLUMN IS DETERMINED BY DRIVE THRU WIDTH. CONTROLLERS, ENCLOSURE AND HARNESS BY WALLACE INTERNATIONAL CONDUIT, BY OTHERS. SEE SHEET 2 FOR CONDUIT SIZES, QUANTITIES AND REQUIREMENTS.

POWER REQUIREMENTS - 208 / 240V SINGLE PHASE, 20 AMP

NOTE:

- DIMENSIONS ARE SHOWN IN INCHES, DIMENSIONS SHOWN IN [] ARE IN MILLIMETERS.

FINISH:

- STANDARD FINISH: HOT DIPPED GALVANIZED FOR ALL STEEL COMPONENTS.
- OPTIONAL POWDER COAT PAINT FINISH AVAILABLE

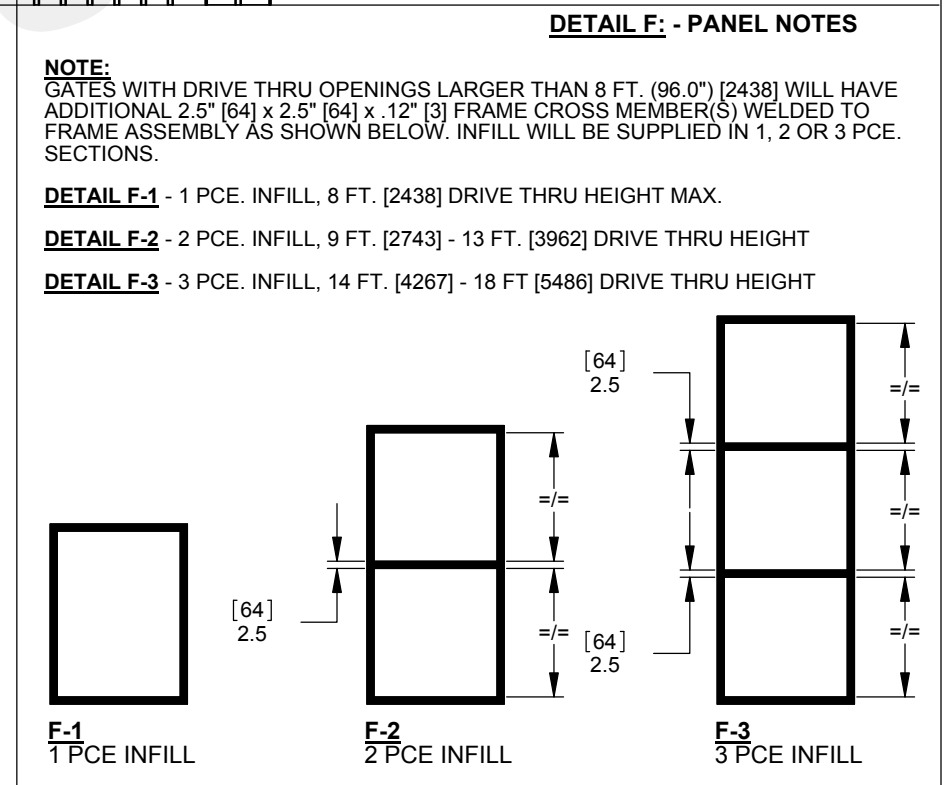
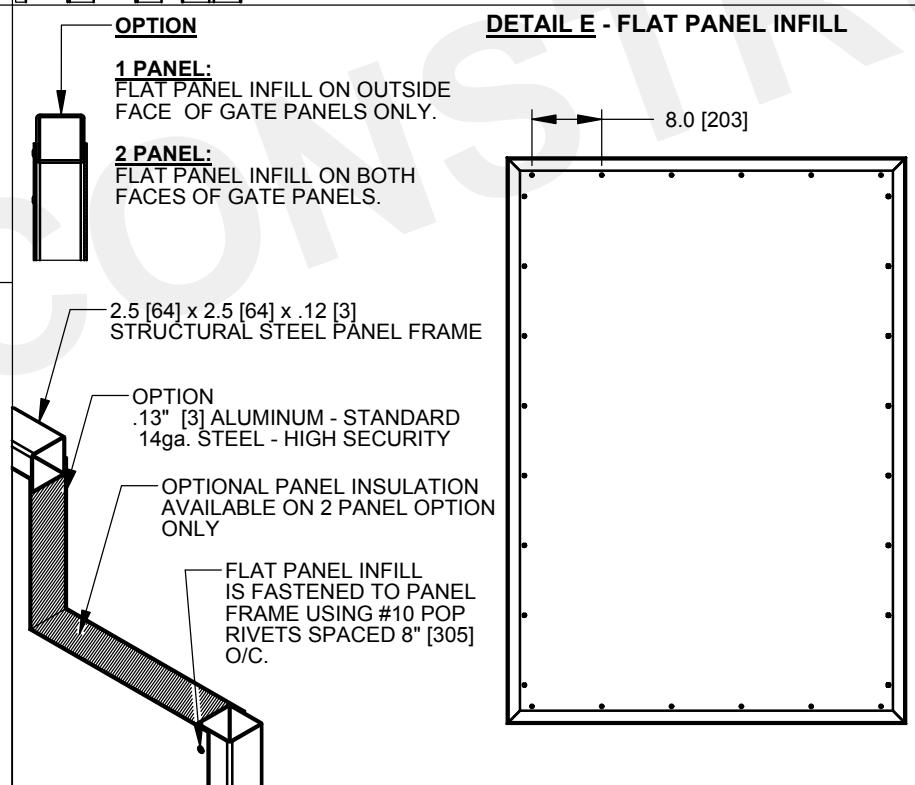
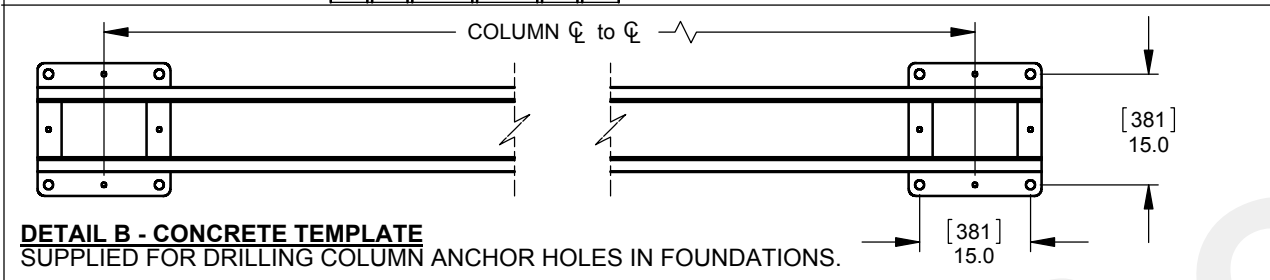
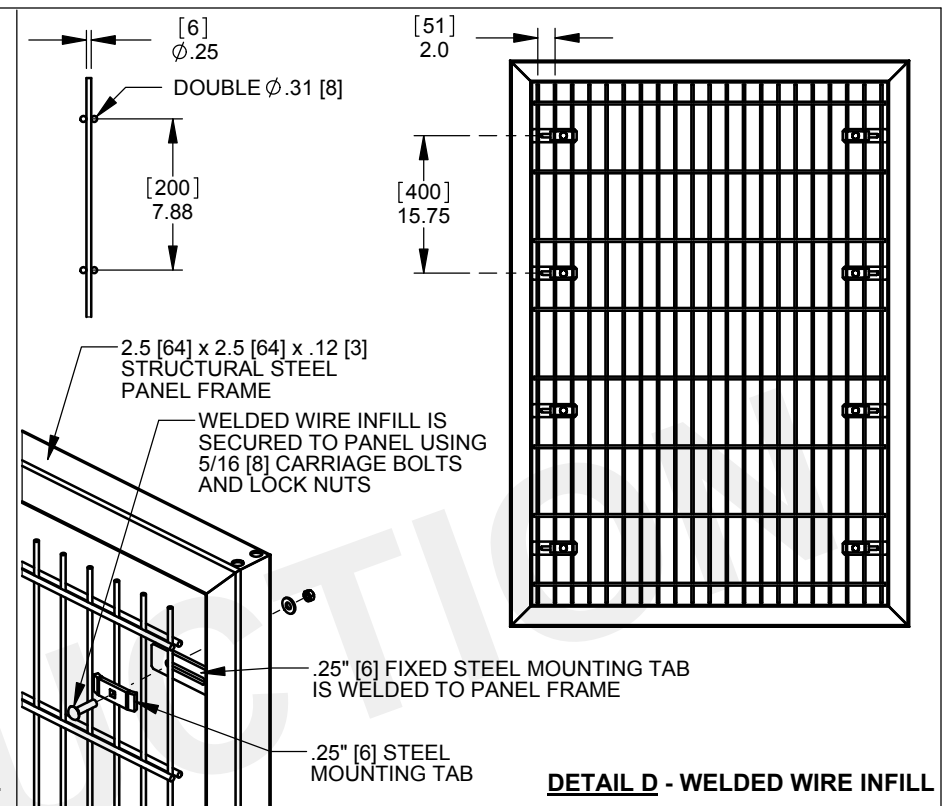
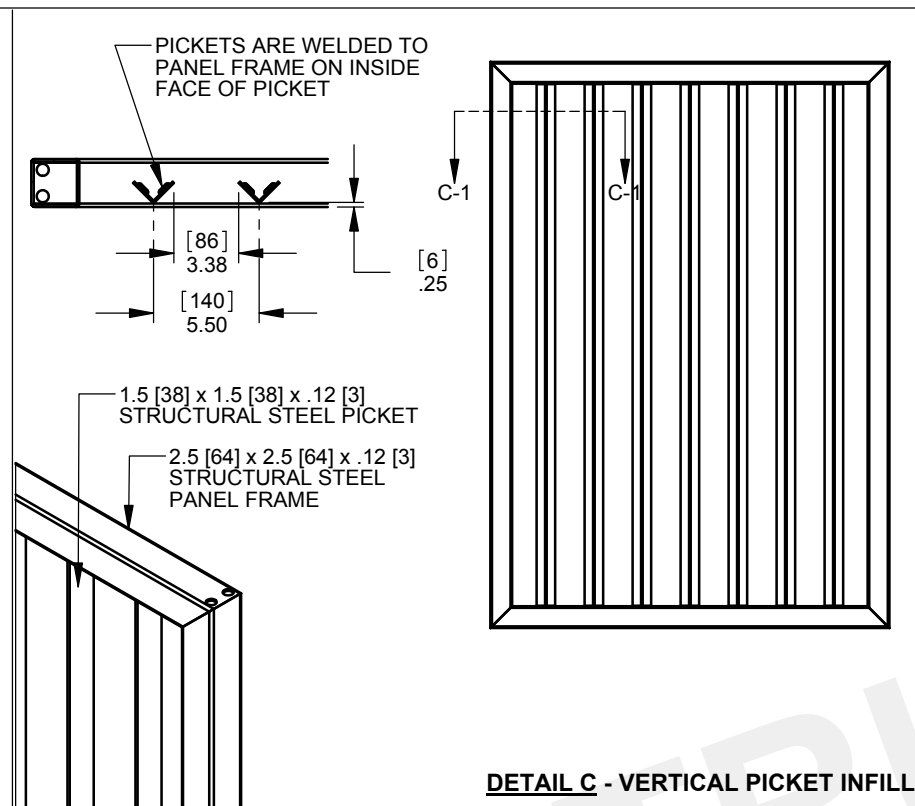
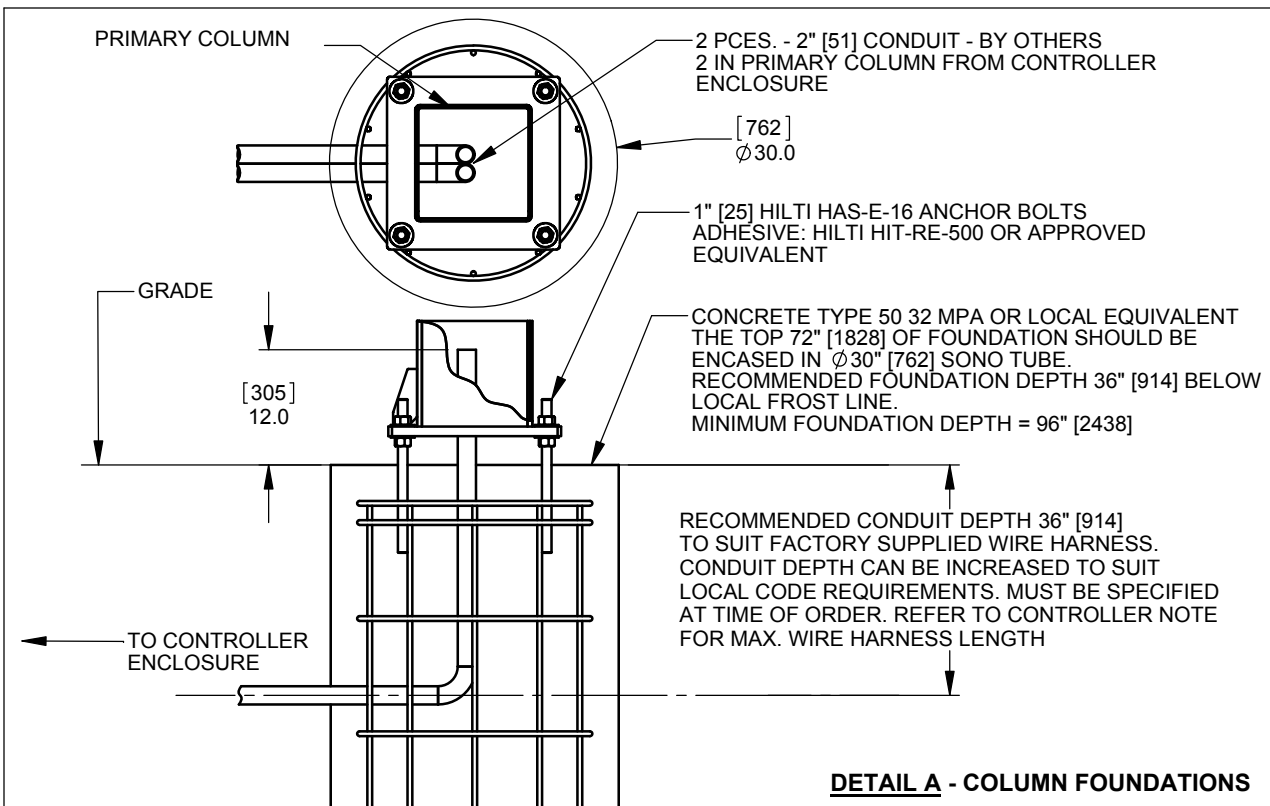
DRIVE THRU SIZES:

WIDTH	MAX. HEIGHT
SIZES TO 18' [5486]	18' [5486]
19' [5791] TO 24' [7318]	16' [4879]



90 Lowson Crescent,
Winnipeg, Manitoba, Canada R3P 2H8
Phone: 1-866-300-1110
Fax: 1-204-284-1868
Web: www.wallaceintl.com

Description: PDTT POST DRIVE TOP TRACK SPEEDGATE	
Customer / Project Name: -	
Finish: SEE NOTES	Date: 11/26/2014
Drawing No. PDTT-11-26-14	Rev. Sheet: 1 of 6



INSTALLATION PROCEDURE

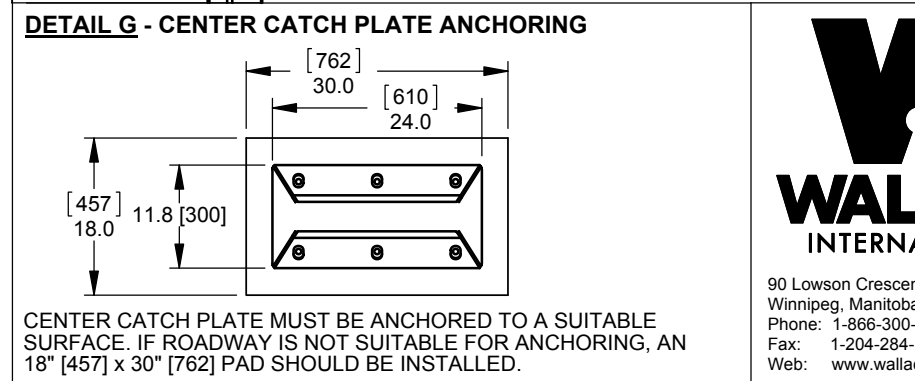
- INSTALL 8 - 1" [25] HILTI HAS-E-16 ANCHOR BOLTS IN SPEEDGATE FOOTINGS. DRILLING TEMPLATE IS PROVIDED FOR ANCHOR BOLT INSTALLATION. REFER TO **DETAIL A** FOR FOOTING / ANCHOR BOLT INFORMATION.
- SET LH & RH COLUMNS ON ANCHOR BOLTS AND SECURE USING SUPPLIED HARDWARE. COLUMNS MUST BE VERTICAL AND PLUMB AFTER INSTALLATION.
- INSTALL TOP TRACK / HEADER
- INSTALL LH AND RH GATE PANELS
- INSTALL DRIVE PIN GUIDE WHEEL ASSEMBLIES.
- TERMINATE WIRING IN ELECTRICAL TERMINATION BOX LOCATED INSIDE OF GATE COLUMNS REFER TO **DETAIL K-1**, ON SHEET 3 FOR TERMINATION BOX LOCATION.


INCLUDED WITH SPEEDGATE:

- 2 - ELECTRONIC GATE CONTROLLERS MOUNTED IN A 30" [762] x 30" [762] x 12" [305] NEMA 3R ENCLOSURE.
- ELECTRICAL HARNESS TO CONNECT GATE CONTROLLER TO DRIVE COMPONENTS. STANDARD HARNESS LENGTH ALLOWS FOR CONTROL ENCLOSURE TO BE MOUNTED UP TO 30 FT. [9144] FROM PRIMARY COLUMN. OPTIONAL EXTENDED HARNESS AVAILABLE, SEE NOTE ON SHEET 1
- KEY AND LOCK FOR ALL ACCESS PANELS, REFER TO **DETAILS H1 - H4** FOR AVAILABLE STYLES.
- ALL GATE MOUNTING HARDWARE

NOT INCLUDED WITH SPEEDGATE:

- VEHICLE DETECTION LOOPS, REFER TO SHEET 5 FOR LOOP SIZING AND LOCATIONS
- GROUT TO FILL GAP UNDER COLUMN BASE PLATES AFTER LEVELING IS COMPLETE.

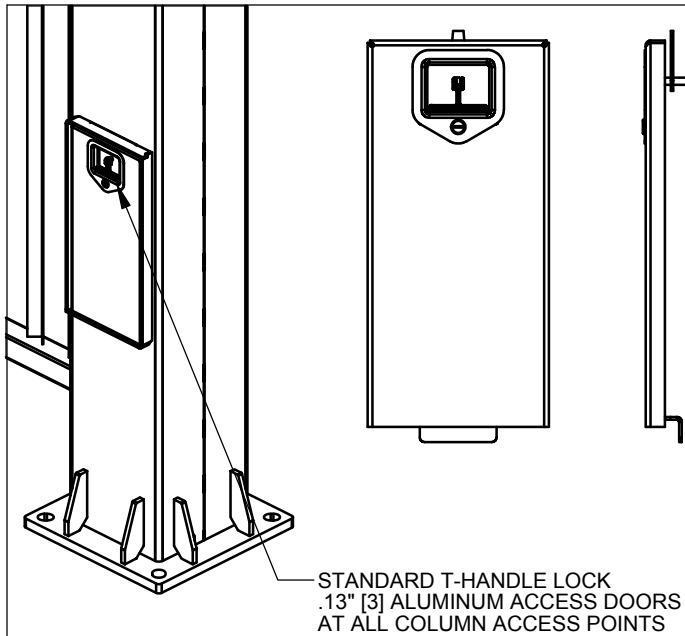




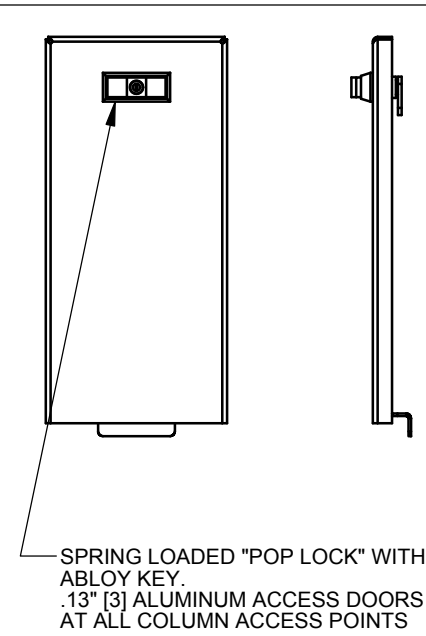
WALLACE INTERNATIONAL

90 Lowson Crescent,
Winnipeg, Manitoba, Canada R3P 2H8
Phone: 1-866-300-1110
Fax: 1-204-284-1868
Web: www.wallaceintl.com

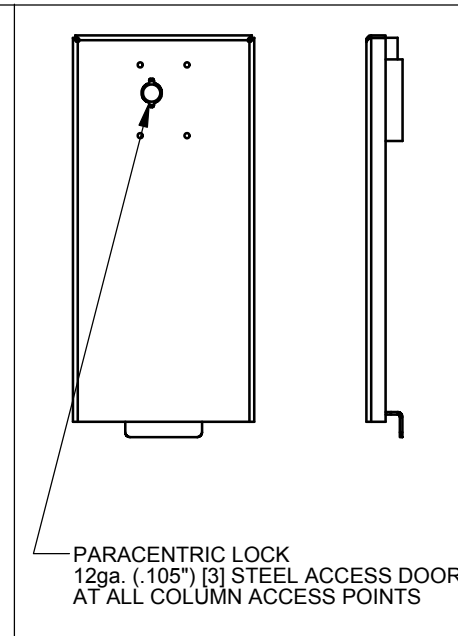
Description:		PDTT	
POST DRIVE TOP TRACK SPEEDGATE		STANDARD NOTES AND OPTIONS	
Customer / Project Name:			
-			
Finish:	Date:		
-		11/26/2014	
Drawing No.	Rev.	Sheet:	
PDTT-11-26-14		2 of 6	



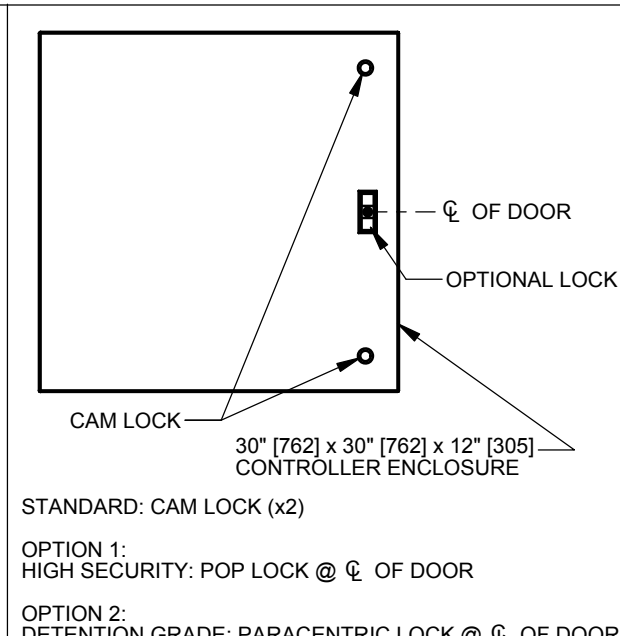
DETAIL H-1:
STANDARD T-HANDLE ACCESS POINT LOCK



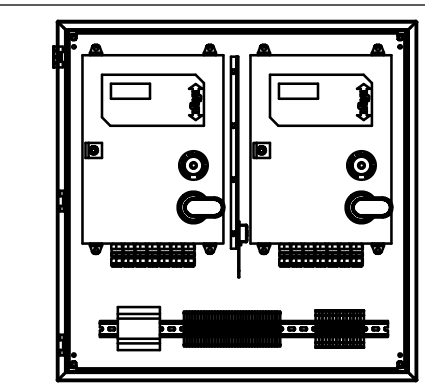
DETAIL H-2:
OPTIONAL HIGH SECURITY LOCK



DETAIL H-3:
OPTIONAL DETENTION GRADE LOCK



DETAIL I-1:
OPTIONAL CONTROLLER ENCLOSURE DOOR LOCK



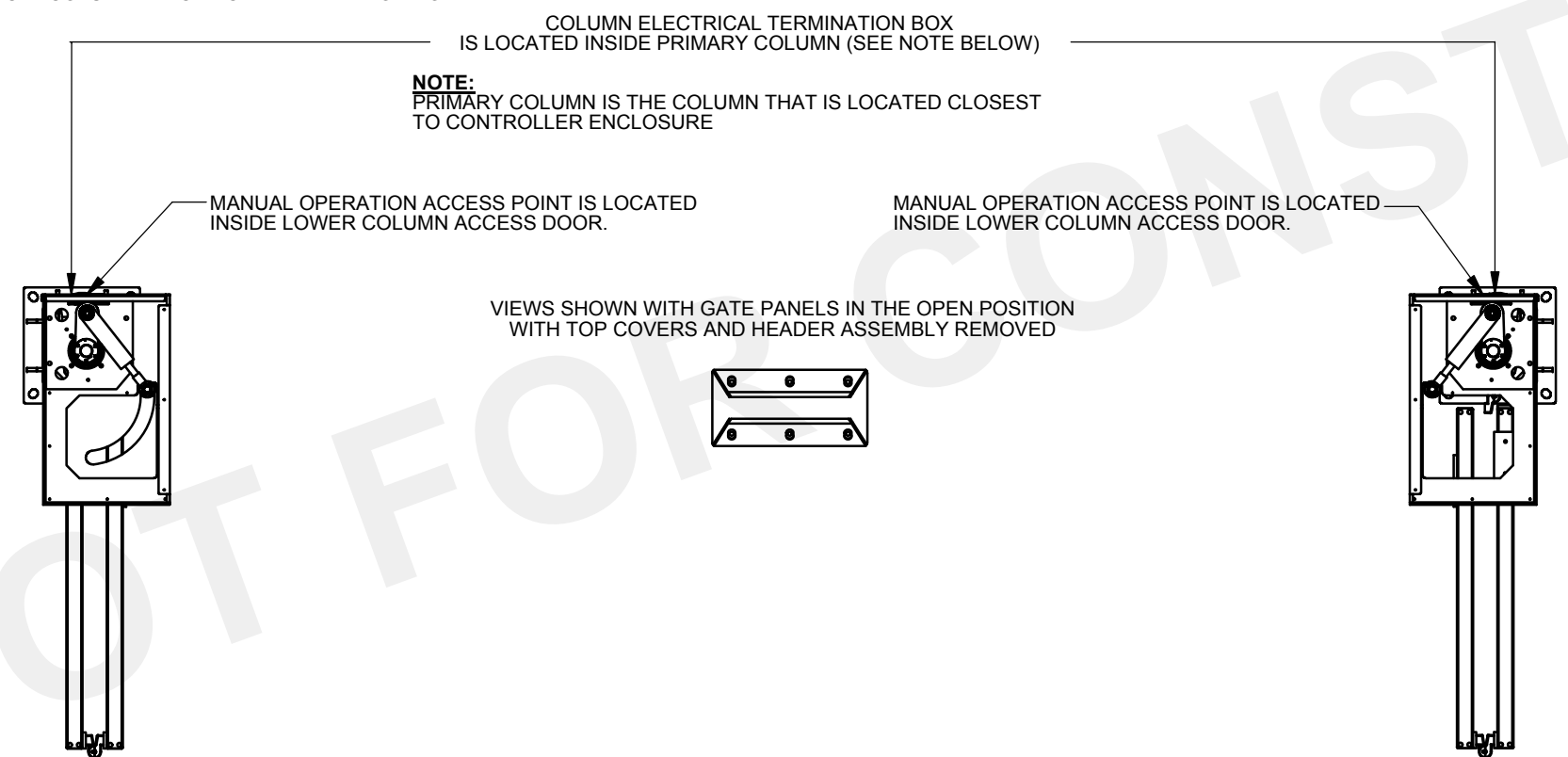
30" [762] x 30" [762] x 12" [305] NEMA 3R ENCLOSURE CAN BE FITTED WITH OPTIONAL HEATING AND COOLING KITS TO ACCOMMODATE A WIDE RANGE OF TEMPERATURES.

OPTIONAL HOT WEATHER KIT INCLUDES:
EXHAUST FAN, VENT GRILLES, RAIN SHROUDS AND THERMOSTAT.

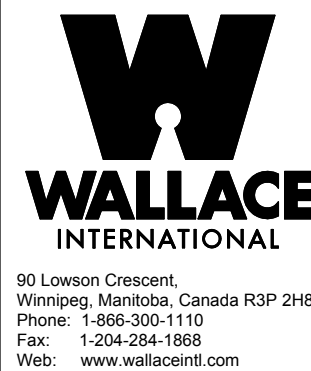
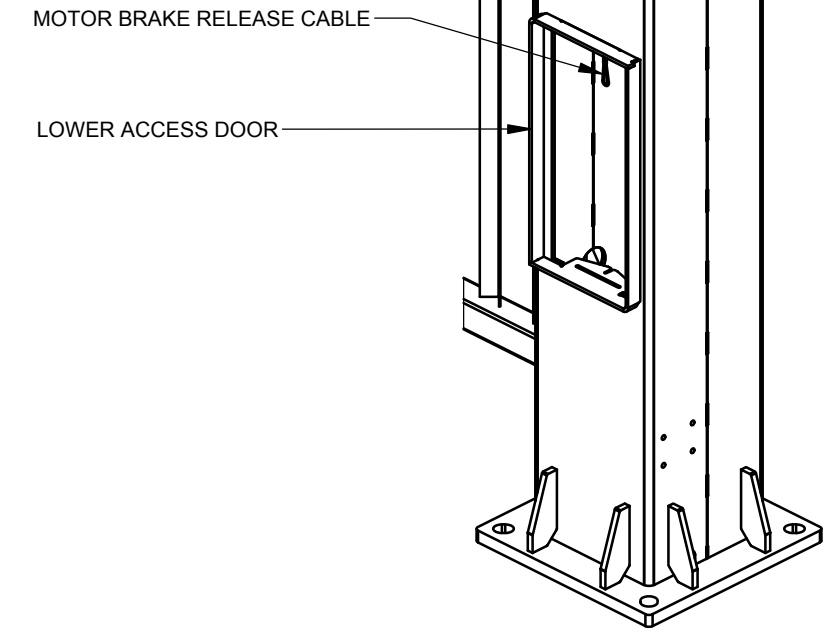
OPTIONAL COLD WEATHER KIT INCLUDES:
320 WATT SELF-REGULATING, THERMAL COVER, (THERMAL COVER IS AVAILABLE ONLY IF CONTROLLER ENCLOSURE IS FREE STANDING)

DETAIL J-1:
ENVIRONMENTAL CONTROLS

DETAIL K:
MOTOR BRAKE DISCONNECT / COLUMN ELECTRICAL TERMINATION BOX DETAIL

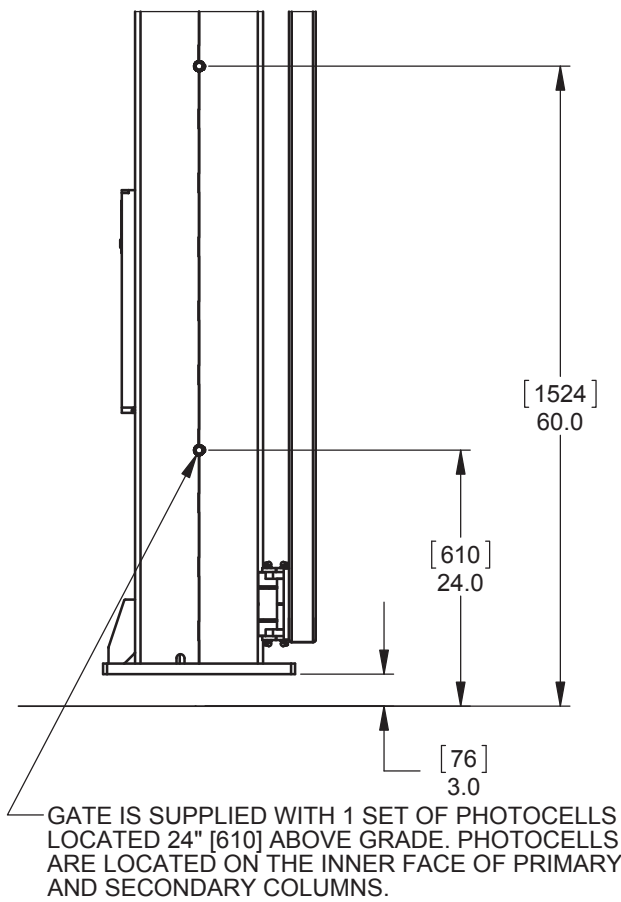


DETAIL K-1: - COLUMN ACCESS TERMINATION BRAKE DISCONNECT DETAIL

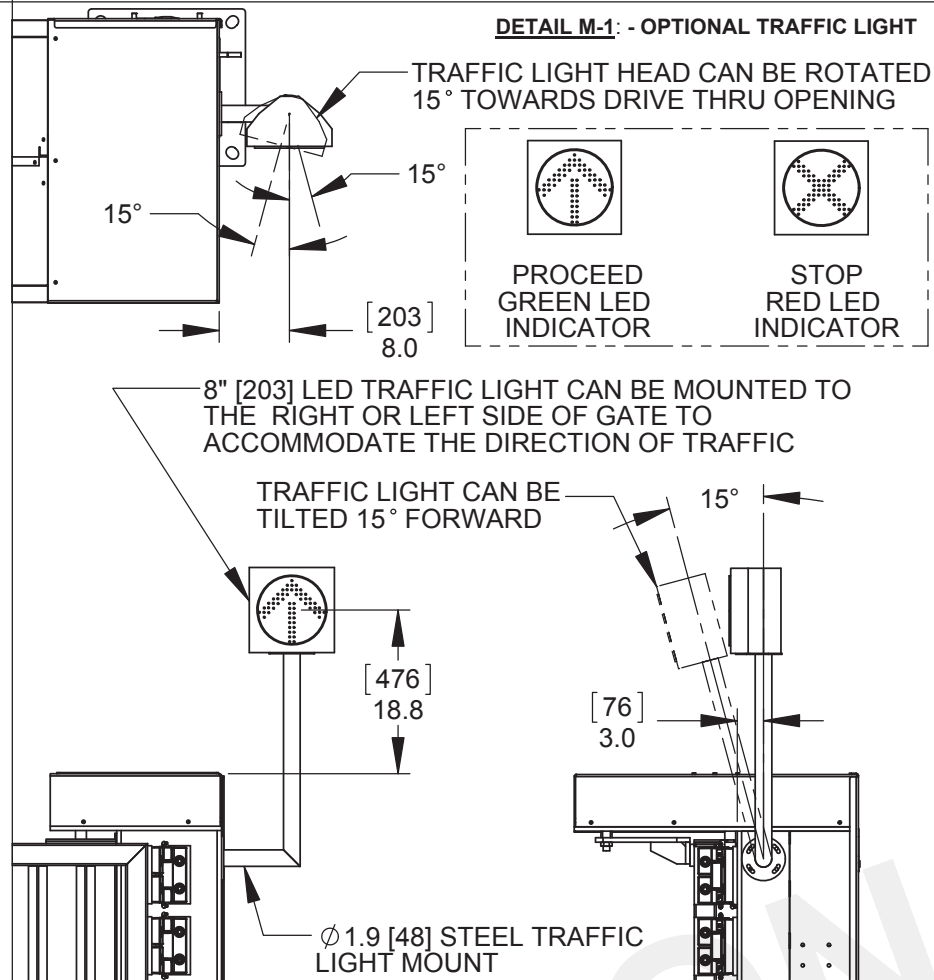


Description:		PDTT	
		POST DRIVE TOP TRACK SPEED GATE STANDARD NOTES AND OPTIONS CONT'D	
Customer / Project Name:			
-			
Finish:		Date:	11/26/2014
Drawing No.		Rev.	Sheet:
PDTT-11-26-14			3 of 6

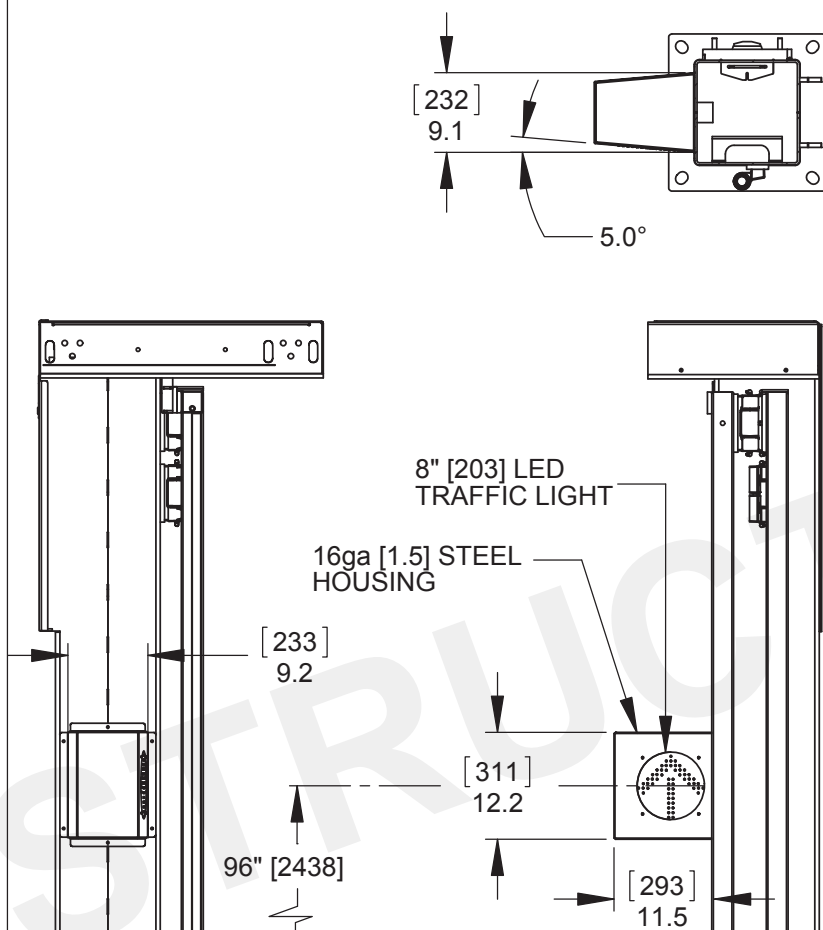
DETAIL L: - PHOTOCELLS



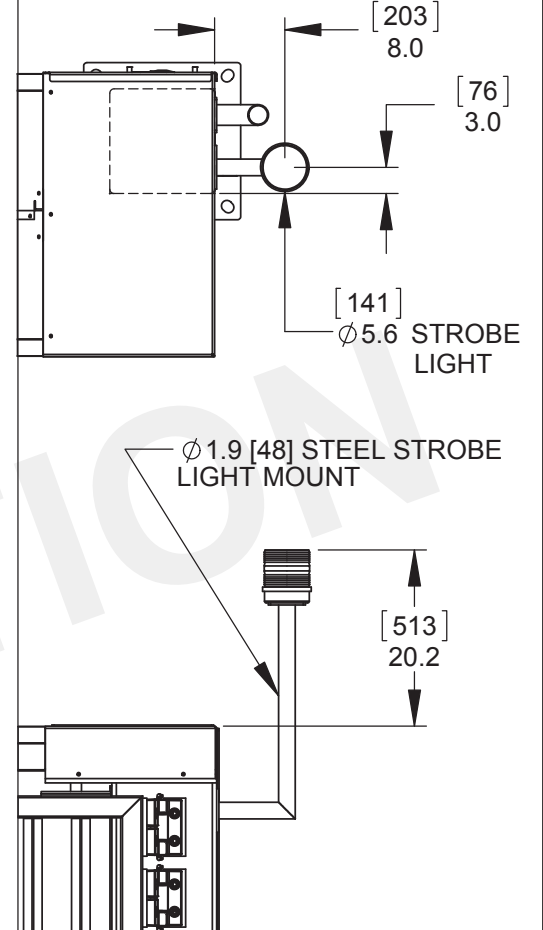
DETAIL M-1: - OPTIONAL TRAFFIC LIGHT



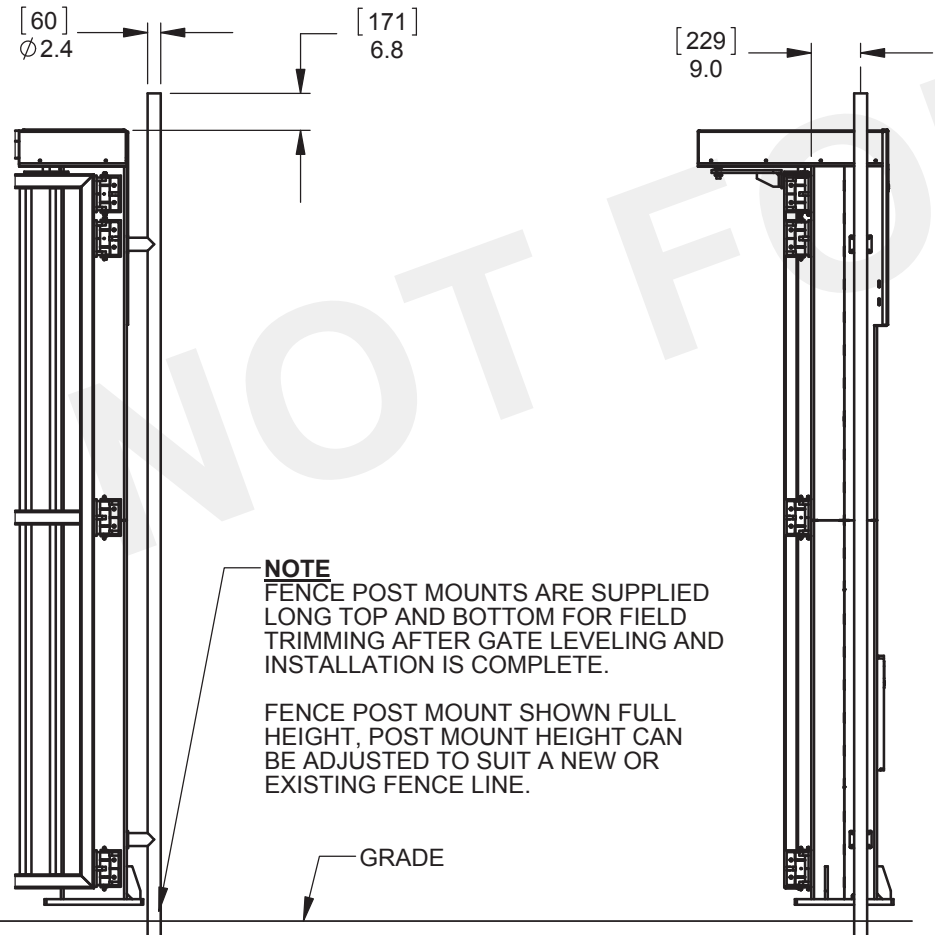
DETAIL M-2: - OPTIONAL DRIVE THRU MOUNTED TRAFFIC LIGHT



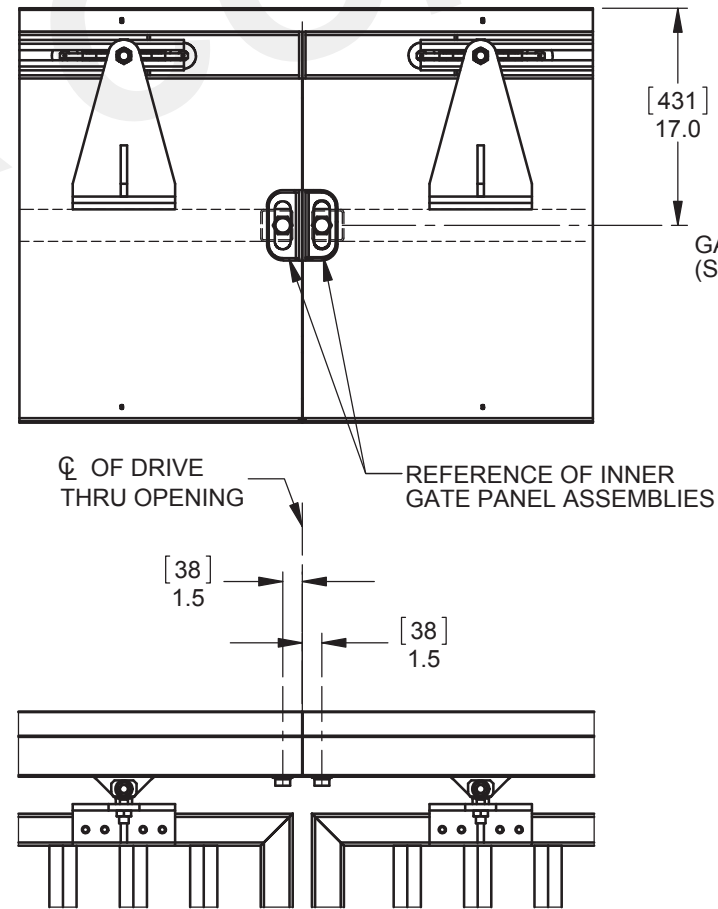
DETAIL N: - OPTIONAL STROBE LIGHT



DETAIL O: - OPTIONAL FENCE POST MOUNTS

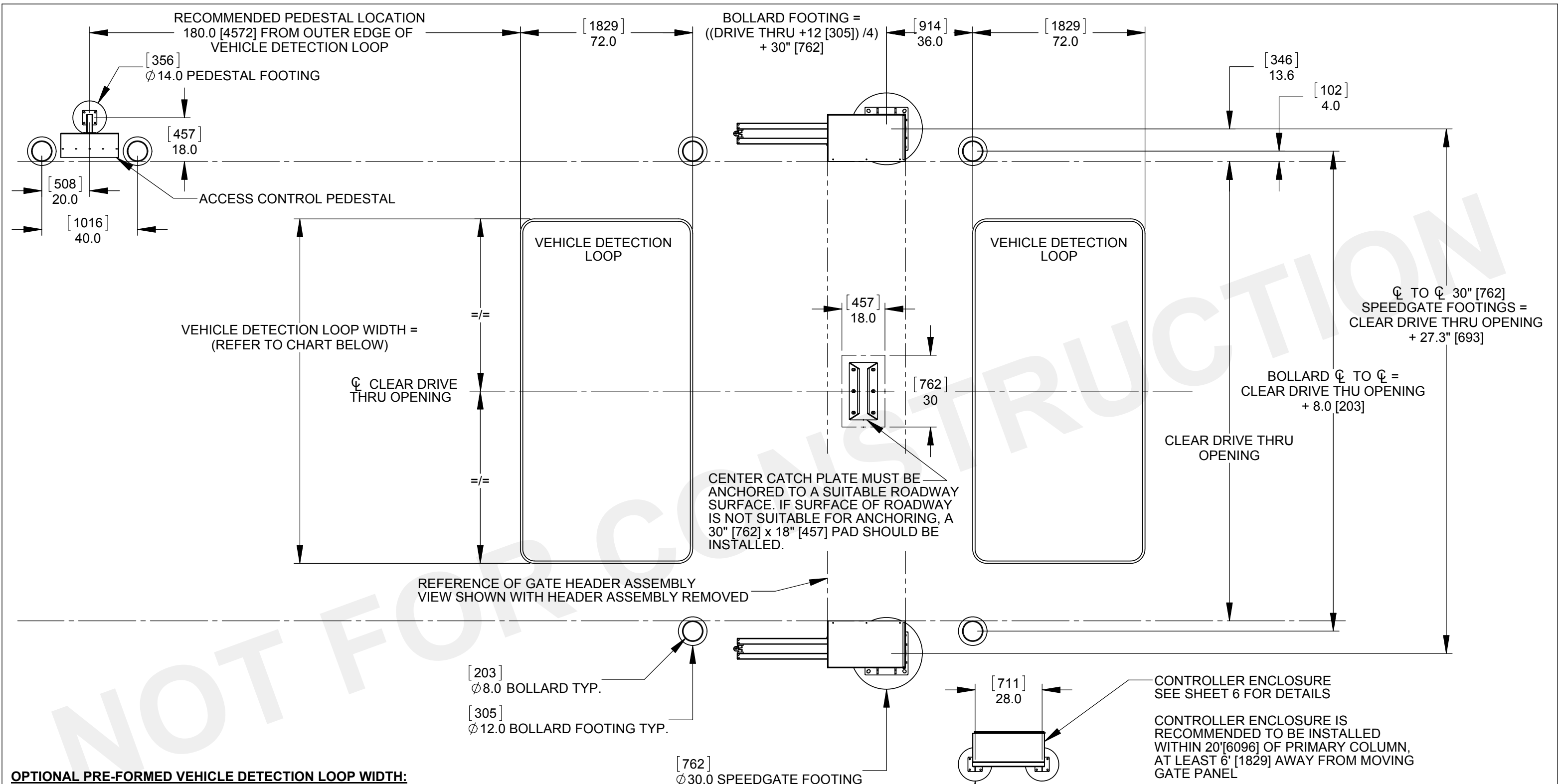


DETAIL P: - OPTIONAL DOOR POSITION SWITCH




90 Lawson Crescent,
Winnipeg, Manitoba, Canada R3P 2H8
Phone: 1-866-300-1110
Fax: 1-204-284-1868
Web: www.wallaceintl.com

Description:		PDTT POST DRIVE TOP TRACK SPEEDGATE STANDARD NOTES AND OPTIONS	
Customer / Project Name:		-	
Finish:	-	Date:	11/26/2014
Drawing No.	PDTT-11-26-14	Rev.	Sheet: 4 of 6



OPTIONAL PRE-FORMED VEHICLE DETECTION LOOP WIDTH:

Clear Drive Thru Opening	Loop Width
10' [3048]	96" [2438]
12' [3658]	96" [2438]
14' [4267]	120" [3048]
16' [4877]	144" [3658]
18' [5486]	168" [4267]
20' [6096]	192" [4877]
22' [6076]	192" [4877]
24' [7315]	240" [6096]



90 Lowson Crescent,
Winnipeg, Manitoba, Canada R3P 2H8
Phone: 1-866-300-1110
Fax: 1-204-284-1868
Web: www.wallaceintl.com

Description: **PDTT**
**POST DRIVE TOP TRACK SPEEDGATE
FOOTINGS / VEHICLE DETECTION LOOP LOCATIONS**

Customer / Project Name:
-

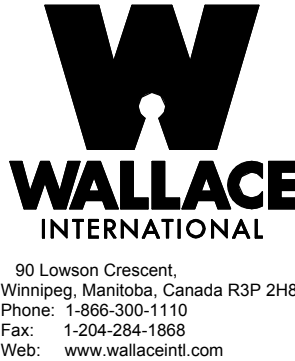
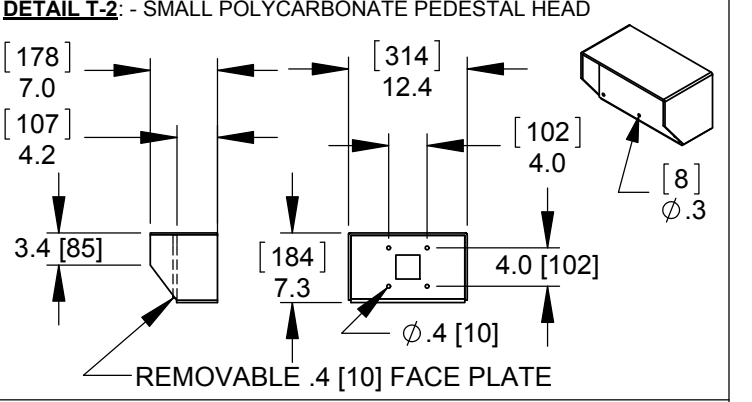
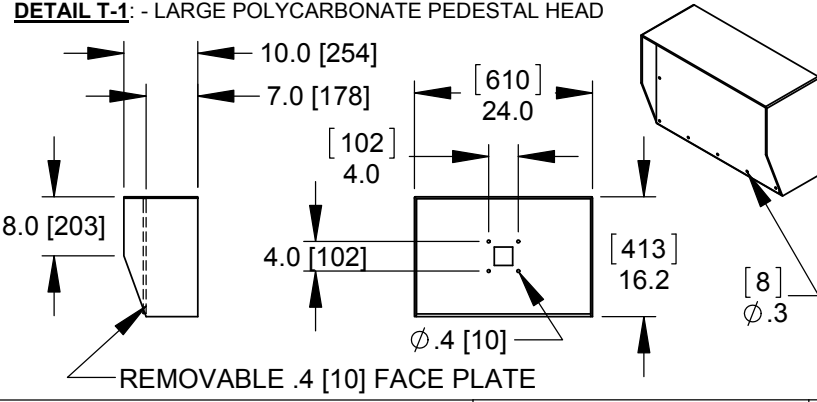
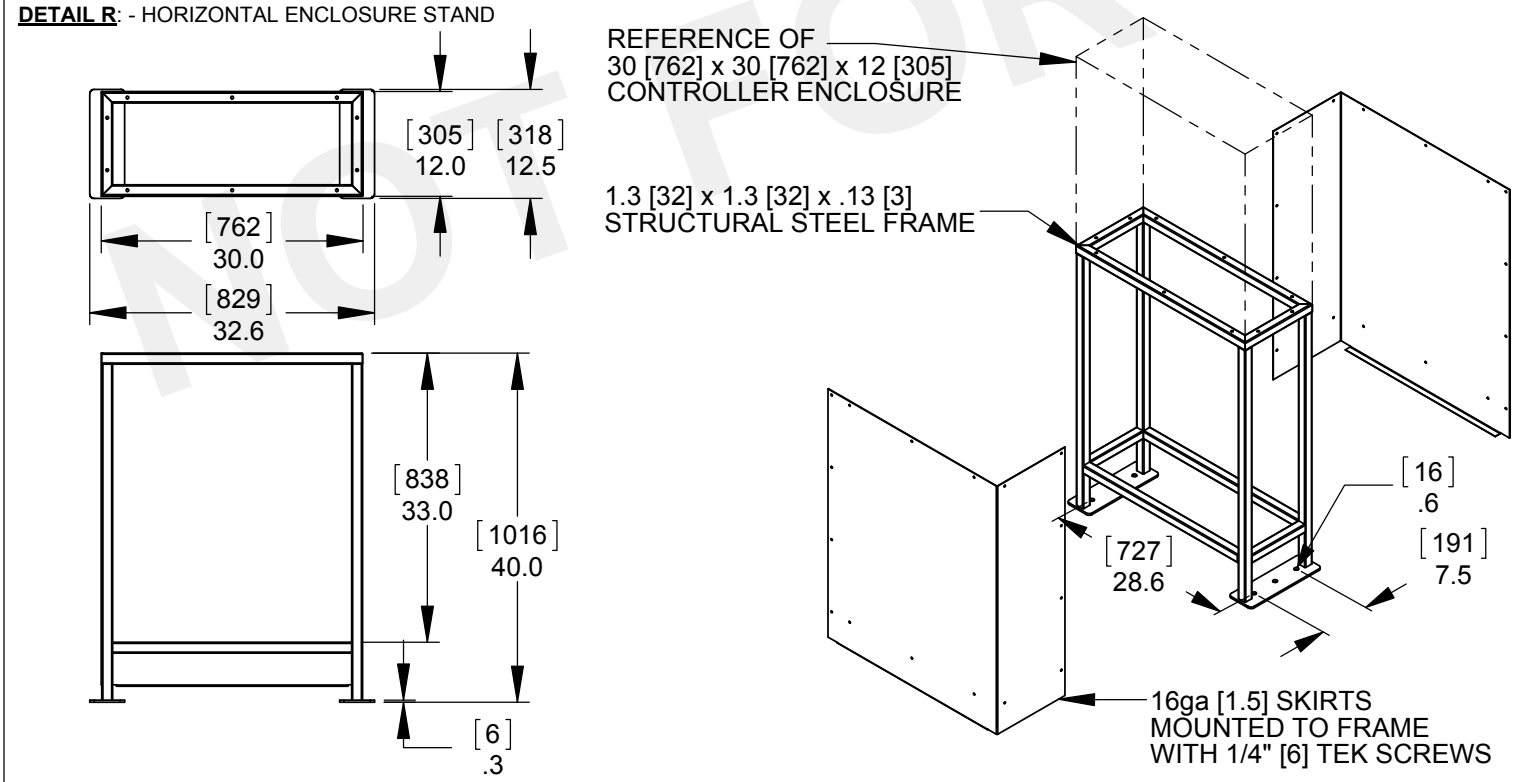
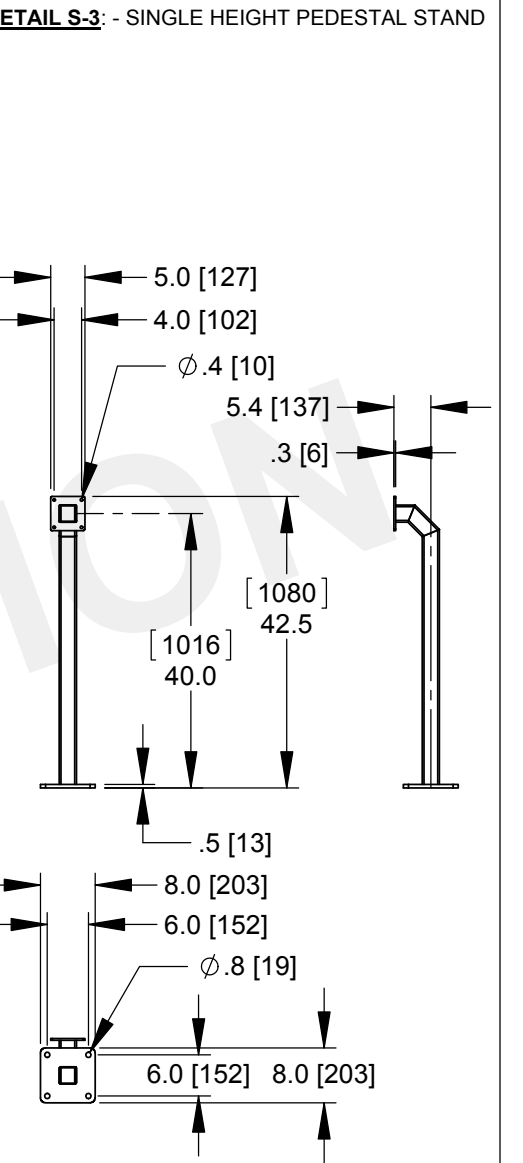
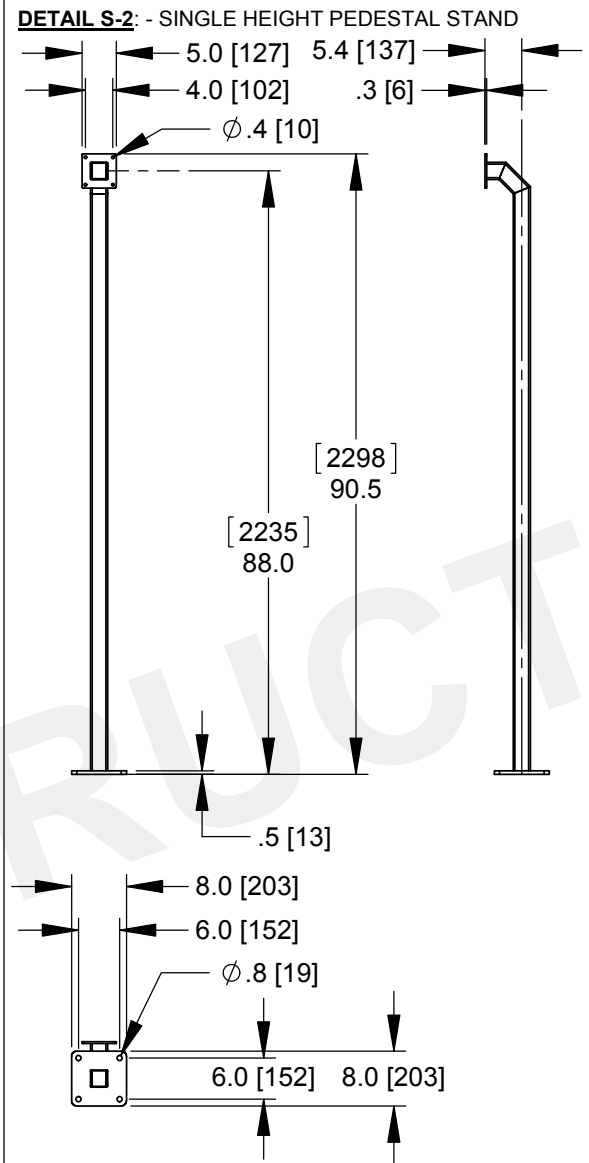
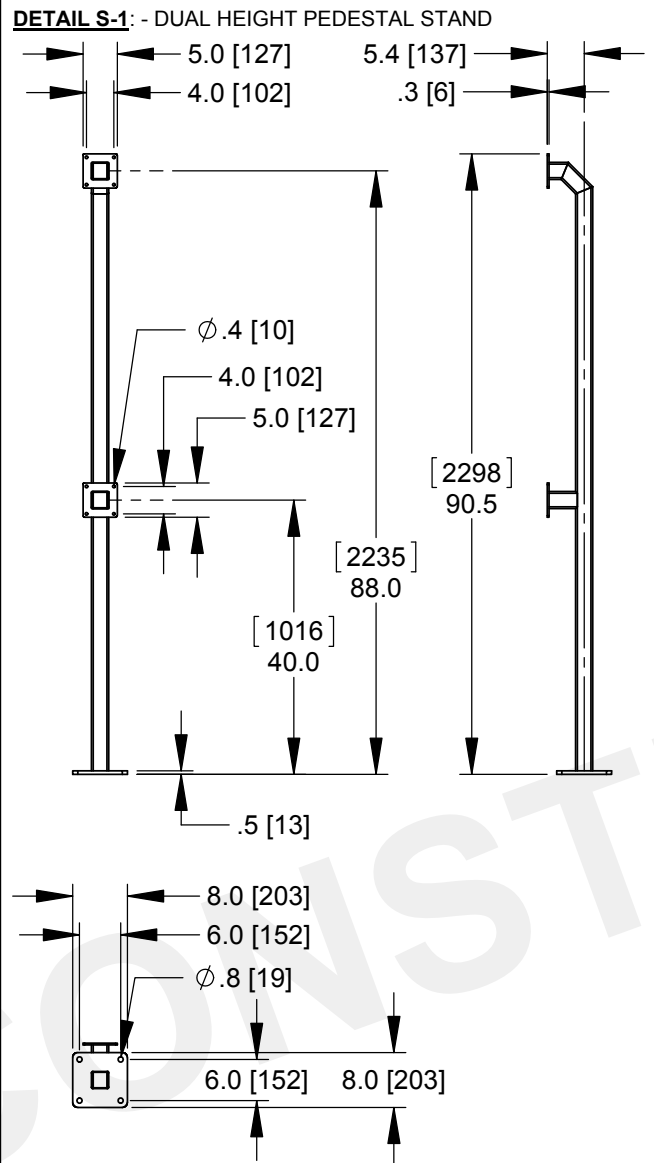
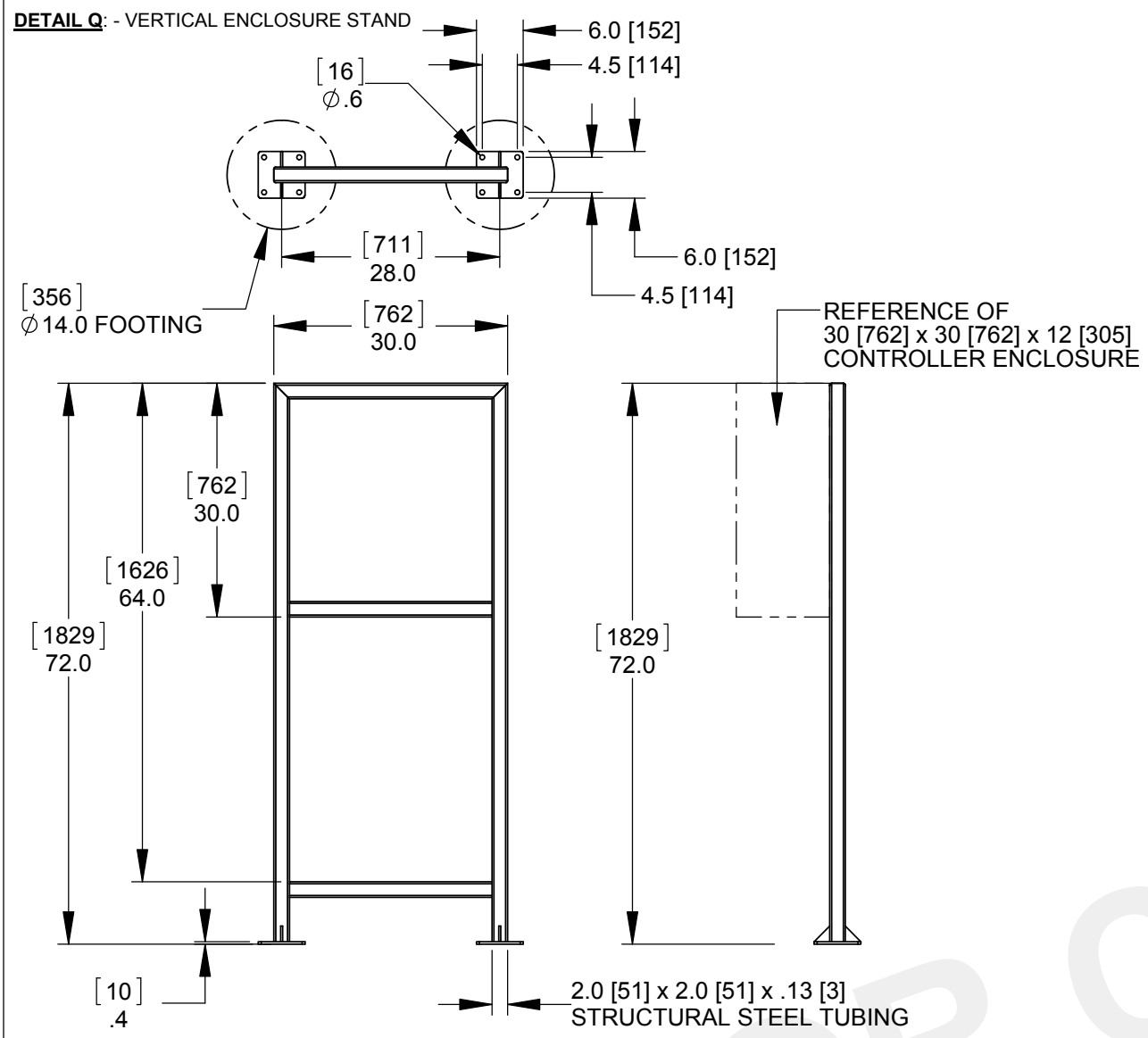
Finish:
-

Drawing No. **PDTT-11-26-14**

Date:
11/26/2014

Rev.

Sheet:
5 of 6



Description:		PDTT	
CONTROLLER ENCLOSURE STANDS		PEDESTAL HEADS / PEDESTAL STANDS	
Customer / Project Name:			
-			
Finish:	Date:		11/26/2014
Drawing No.		Rev.	Sheet:
PDTT-11-26-14			6 of 6