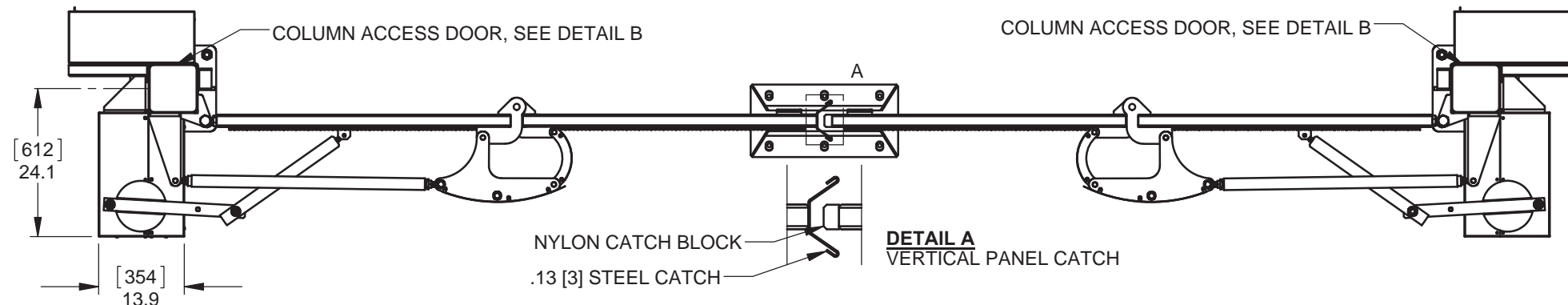
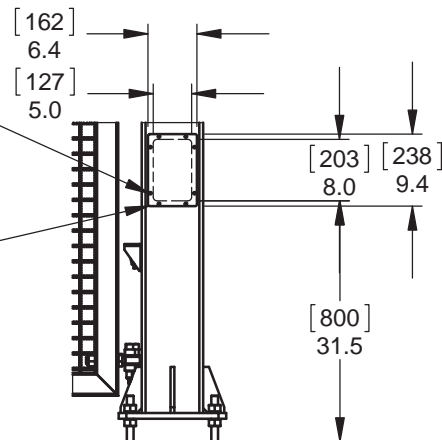


DETAIL B - COLUMN ACCESS DOOR

ACCESS DOOR IS SECURED USING 1/4-20 TORX T27 SECURITY SCREWS

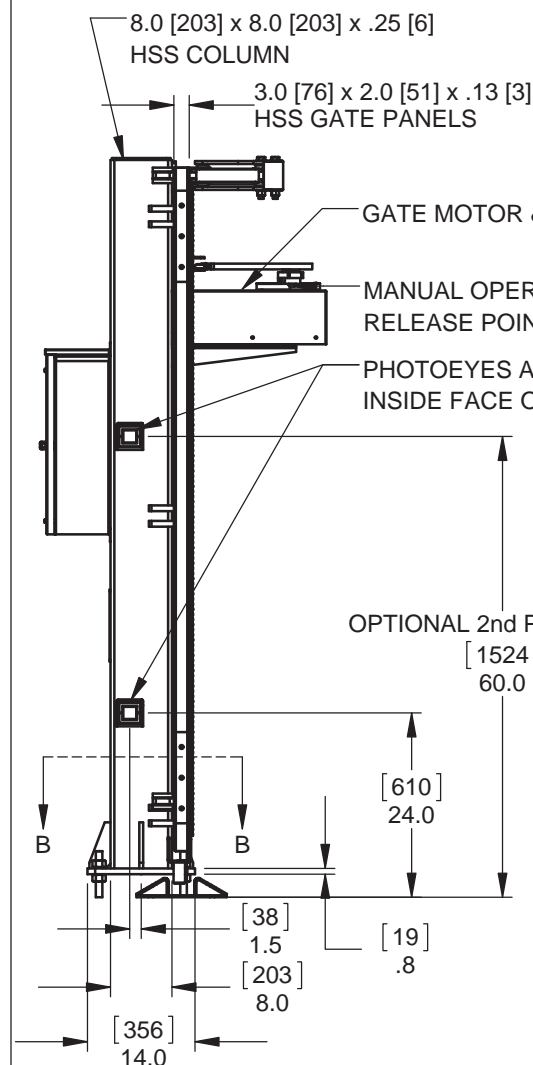
.13 [3] STEEL ACCESS DOOR



CLEAR OPENING 6' [1829] (MIN. 12' [3658] - MAX. 30' [9144])
 8' [2438] (MIN. 12' [3658] - MAX. 26' [7315])
 10' [3048] (MIN. 12' [3658] - MAX. 24' [7925])

*** NOTE: CLEAR OPENING SIZES ARE AVAILABLE IN 1' [305] INCREMENTS ONLY ***

SECTION A-A

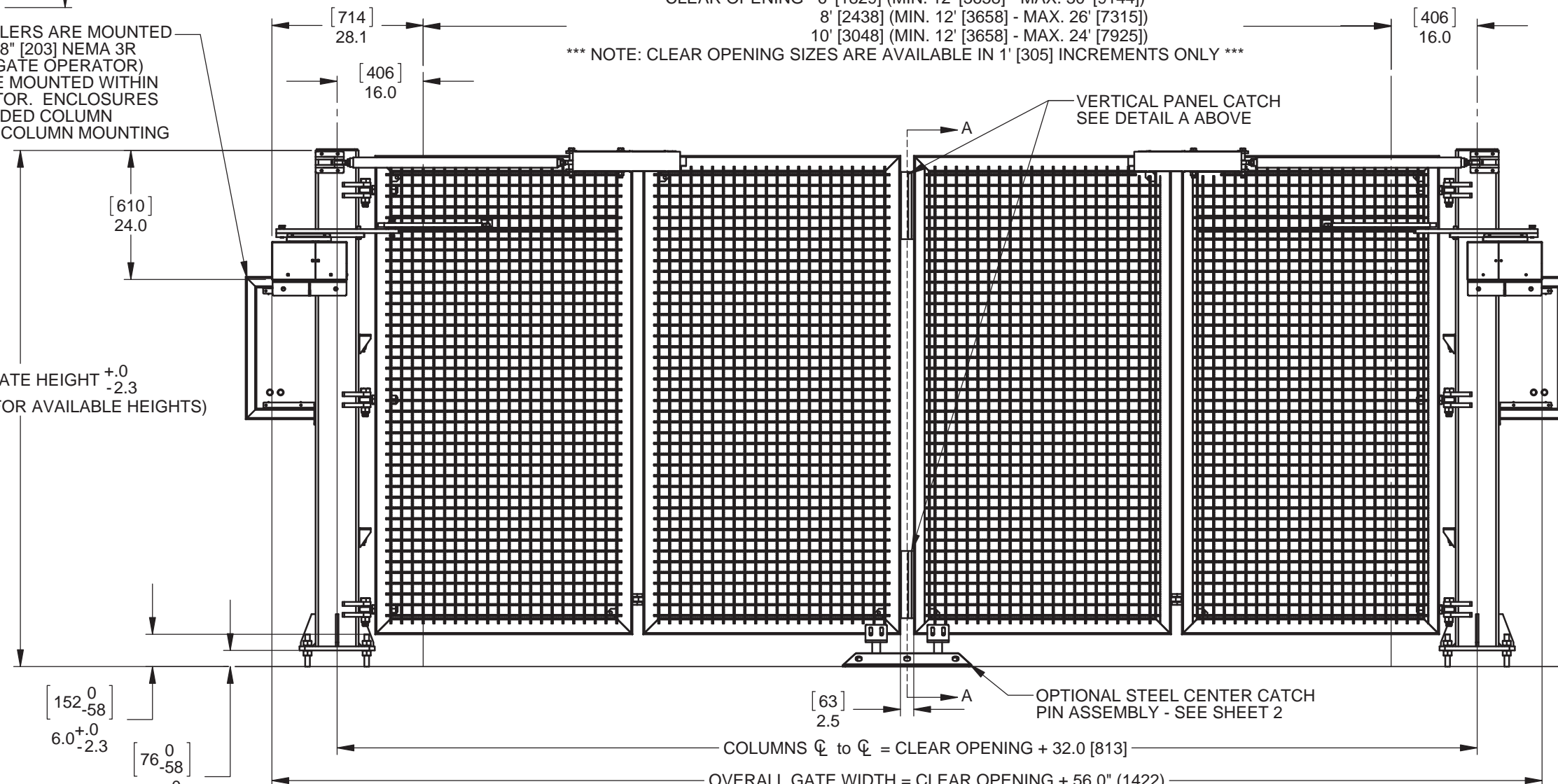


ELECTRICAL CONTROLLERS ARE MOUNTED IN 24" [610] x 20" [508] x 8" [203] NEMA 3R ENCLOSURES, (1 PER GATE OPERATOR) ENCLOSURES MUST BE MOUNTED WITHIN 10' [3048] OF GATE MOTOR. ENCLOSURES SHOWN IN RECOMMENDED COLUMN MOUNTING LOCATION. COLUMN MOUNTING BRACKETS SUPPLIED.

GATE MOTOR & GEARBOX
 MANUAL OPERATION RELEASE POINT
 PHOTOEYES ARE LOCATED ON INSIDE FACE OF COLUMN

OPTIONAL 2nd PHOTOEYE
 1524 [60.0]

OVERALL GATE HEIGHT $+0$ -2.3
 (REFER TO CHART FOR AVAILABLE HEIGHTS)



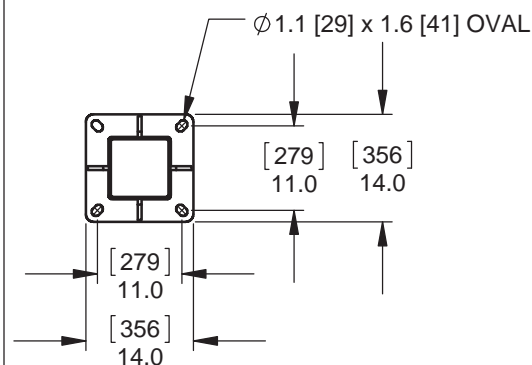
VERTICAL PANEL CATCH SEE DETAIL A ABOVE

OPTIONAL STEEL CENTER CATCH PIN ASSEMBLY - SEE SHEET 2

COLUMNS CL TO CL = CLEAR OPENING + 32.0 [813]

OVERALL GATE WIDTH = CLEAR OPENING + 56.0" (1422)

PARTIAL SECTION B-B - COLUMN BASE PLATE



FINISH NOTES

STANDARD FINISH: HOT DIPPED GALVANIZED ON ALL STEEL COMPONENTS.

OPTIONAL FINISH: POWDER COAT PAINT, CUSTOM COLORS AVAILABLE RAL # MUST BE SPECIFIED AT TIME OF ORDER.

DRIVE THRU HEIGHTS

6ft	72" [1829]
8ft	96" [2438]
10ft	120" [3048]

SEE NOTE BELOW

NOTE: 10' HEIGHT HAS PANEL EXTENSIONS TO ACHIEVE DESIRED GATE HEIGHT SEE SHEET 4 FOR INFO.



90 Lawson Crescent,
 Winnipeg, Manitoba, Canada R3P 2H8
 Phone: 1-866-300-1110
 Fax: 1-204-284-1868
 Web: www.wallaceintl.com

Description:

**FOLDSMART XT
 TRACKLESS BI-FOLD GATE SYSTEM
 STANDARD DIMENSIONS**

Customer / Project Name:

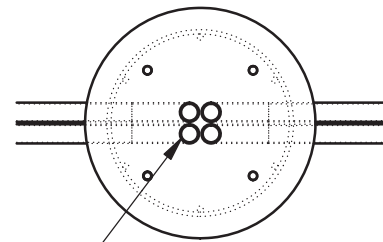
Finish: SEE FINISH NOTES

Date: 4/27/2015

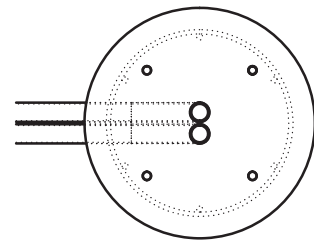
Drawing No. FSXT-04-27-15

Rev. A

Sheet: 1 of 6



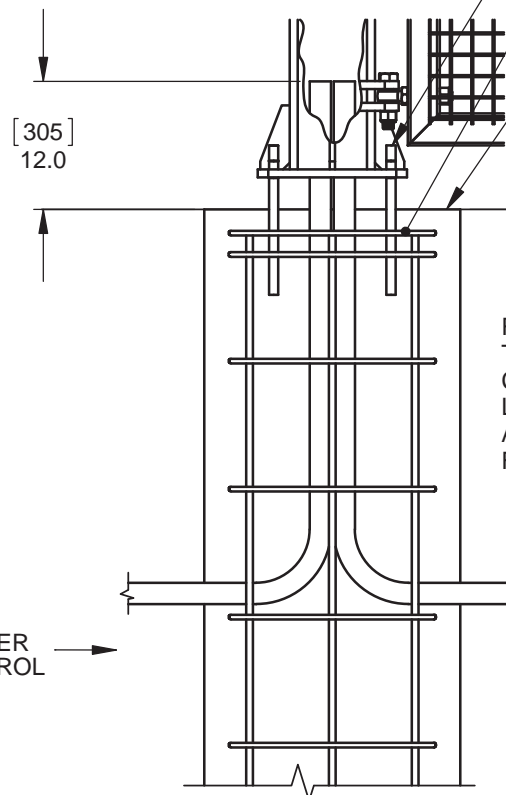
4 PCES. 1" [25] CONDUIT - BY OTHERS
2 IN PRIMARY COLUMN, FROM INCOMING
POWER SUPPLY / ACCESS CONTROL.
2 IN SECONDARY COLUMN FROM PRIMARY
COLUMN.



NOTE:
PRIMARY COLUMN IS THE COLUMN
WITH INCOMING POWER AND ACCESS
CONTROL CONDUIT.

.75" [19] HILTI HAS 5.8 x 17" [432] ANCHOR BOLTS
ADHESIVE: HILTI HIT-RE-500 OR
APPROVED EQUIVALENT.
REINFORCING STEEL:
10M ϕ 19 [493] REBAR RINGS SPACED @ 12 [305] O/C
DOUBLE RINGS AT TOP. 8 - 15M REBAR VERTICALS

CONCRETE TYPE 50 32 Mpa OR LOCAL
EQUIVALENT. THE TOP 72.0 [1828] OF
FOUNDATION TO BE ENCASED IN ϕ 24.0" [610]
SONO TUBE.
RECOMMENDED FOUNDATION DEPTH IS 36.0 [914]
BELOW LOCAL FROST LINE.
MINIMUM FOUNDATION DEPTH 96.0" [2438]



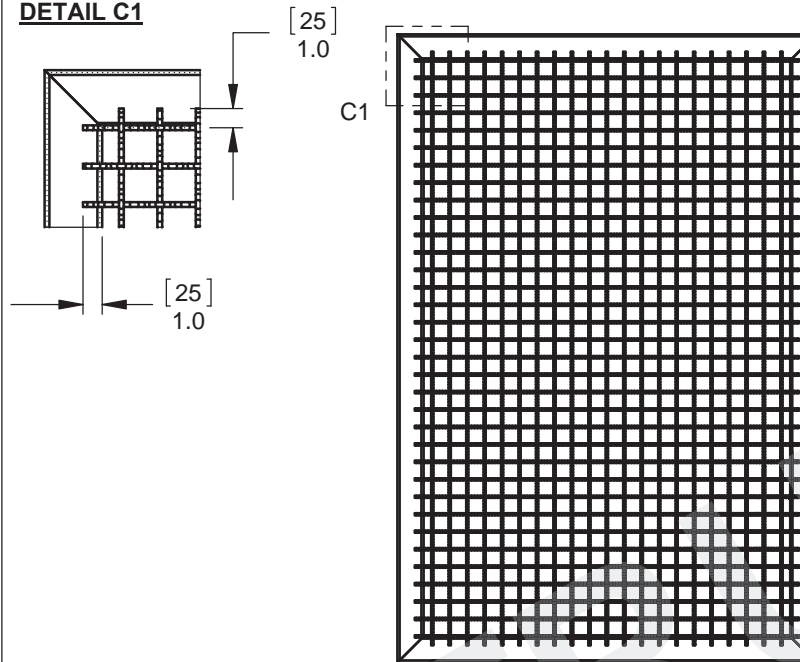
RECOMMENDED CONDUIT DEPTH 36.0 [914]
TO SUIT FACTORY SUPPLIED WIRE HARNESS
CONDUIT DEPTH CAN BE INCREASED TO SUIT
LOCAL CODE REQUIREMENTS. MUST BE SPECIFIED
AT TIME OF ORDER. REFER TO CONTROLLER NOTE
FOR MAX. WIRE HARNESS LENGTH.

INCOMING POWER
/ ACCESS CONTROL

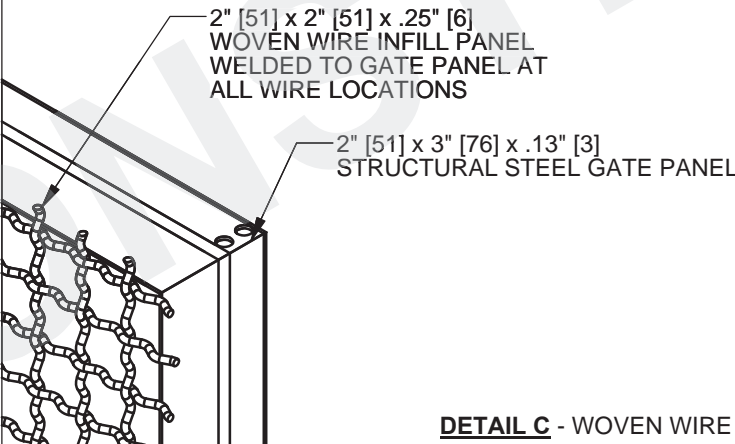
TO SECONDARY
GATE COLUMN

DETAIL A - COLUMN FOUNDATIONS

DETAIL C1



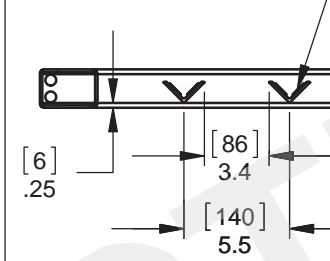
DETAIL C2



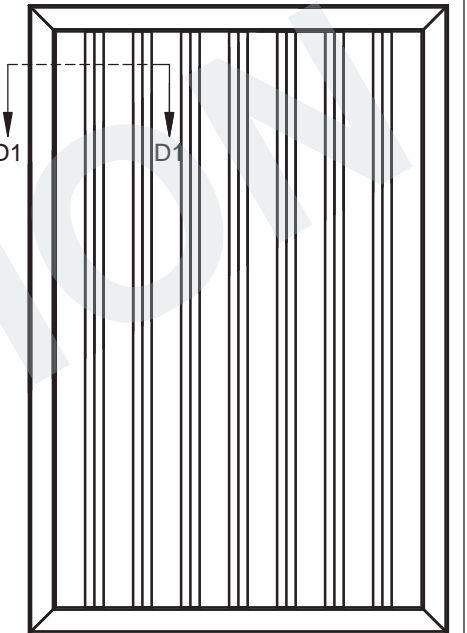
DETAIL C - WOVEN WIRE INFILL

DETAIL D1

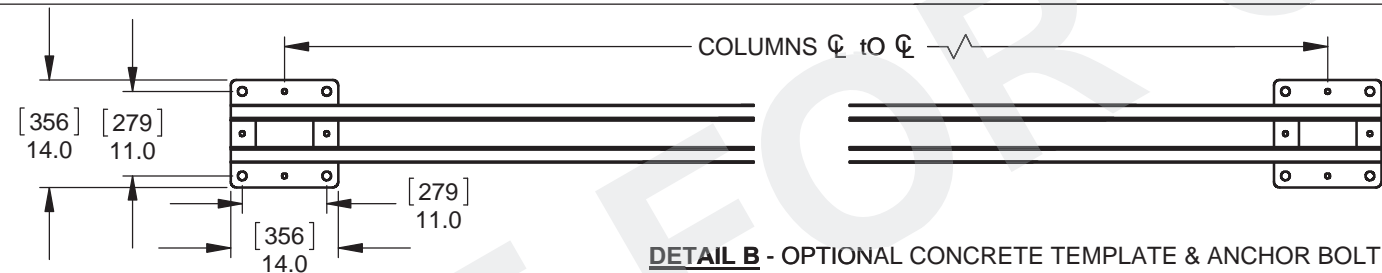
PICKETS ARE WELDED
TO GATE PANEL ON
INNER FACE OF PICKET



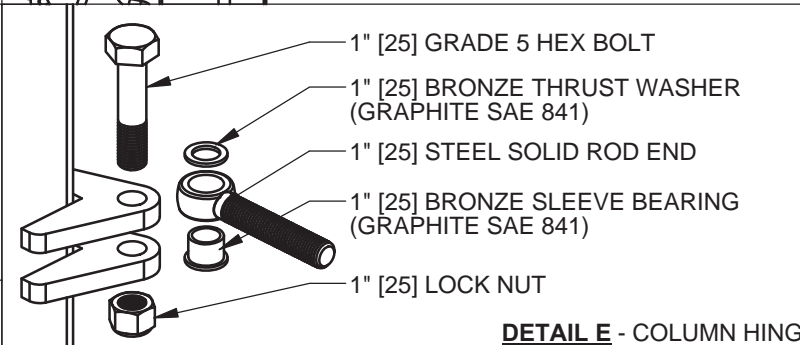
DETAIL D2



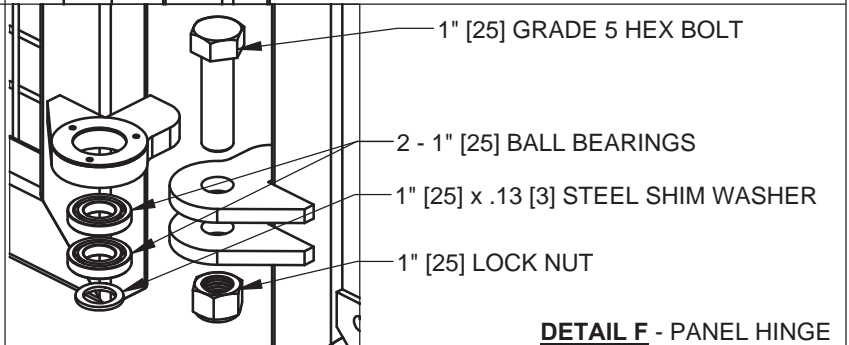
DETAIL D - VERTICAL PICKET INFILL



DETAIL B - OPTIONAL CONCRETE TEMPLATE & ANCHOR BOLT KIT



DETAIL E - COLUMN HINGE



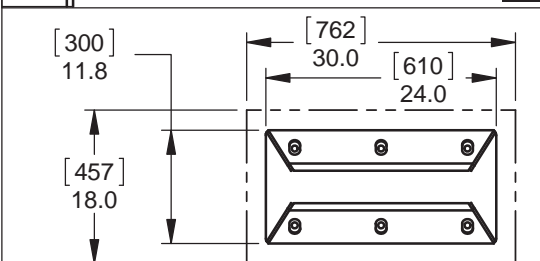
DETAIL F - PANEL HINGE

INCLUDED WITH FOLDSMART

- 2 - ELECTRICAL OPERATORS MOUNTED IN 24" [610] x 20" [508] x 8" [203] NEMA 3R ENCLOSURES.
- KEY FOR MANUAL PANEL RELEASE

OPTIONS:

- CONCRETE TEMPLATE & ANCHOR BOLT KIT
- VEHICLE DETECTION LOOP RELAYS
- VEHICLE DETECTION LOOPS, DIRECT BURIAL OR SAW CUT
- SURFACE MOUNTED CENTER CATCH
- 4" [102] RED / GREEN LED TRAFFIC LIGHT
- 5" AMBER LOW PROFILE STROBE LIGHT
- ANTI - CLIMB
- BARBED WIRE
- PANEL EXTENSIONS
- ACCESS CONTROL PEDESTALS
- BOLLARDS / BOLLARD COVERS



CENTER CATCH MUST BE ANCHORED TO A SUITABLE
ROADWAY SURFACE. DETAIL SHOWN WITH A 30.0 [762] x
18.0 [457] PAD FOR ANCHORING. PAD - BY OTHERS

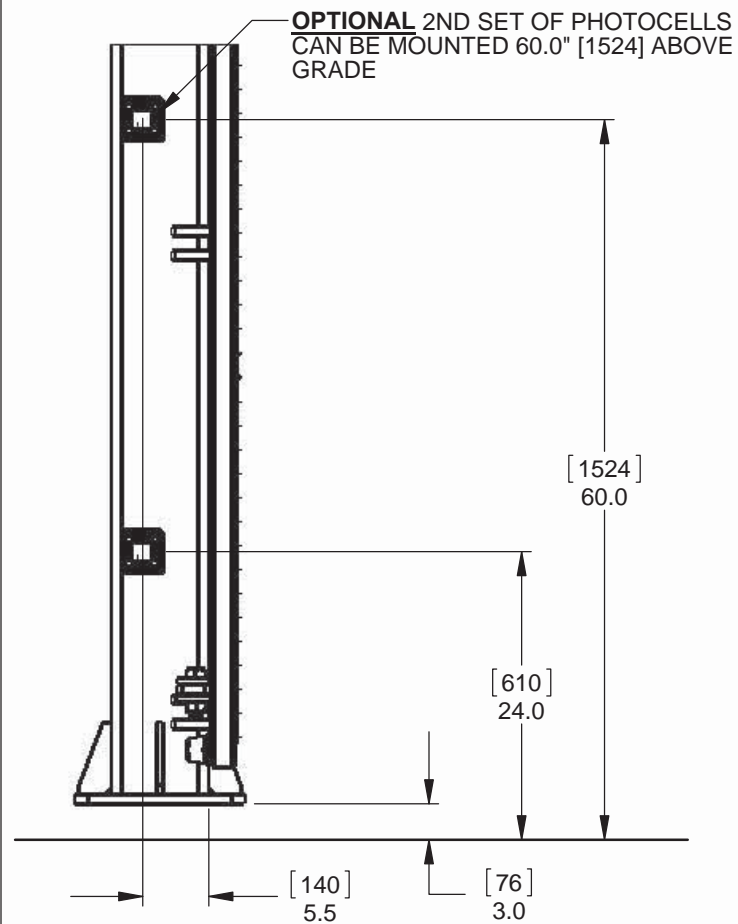
DETAIL G - OPTIONAL CENTER CATCH PLATE



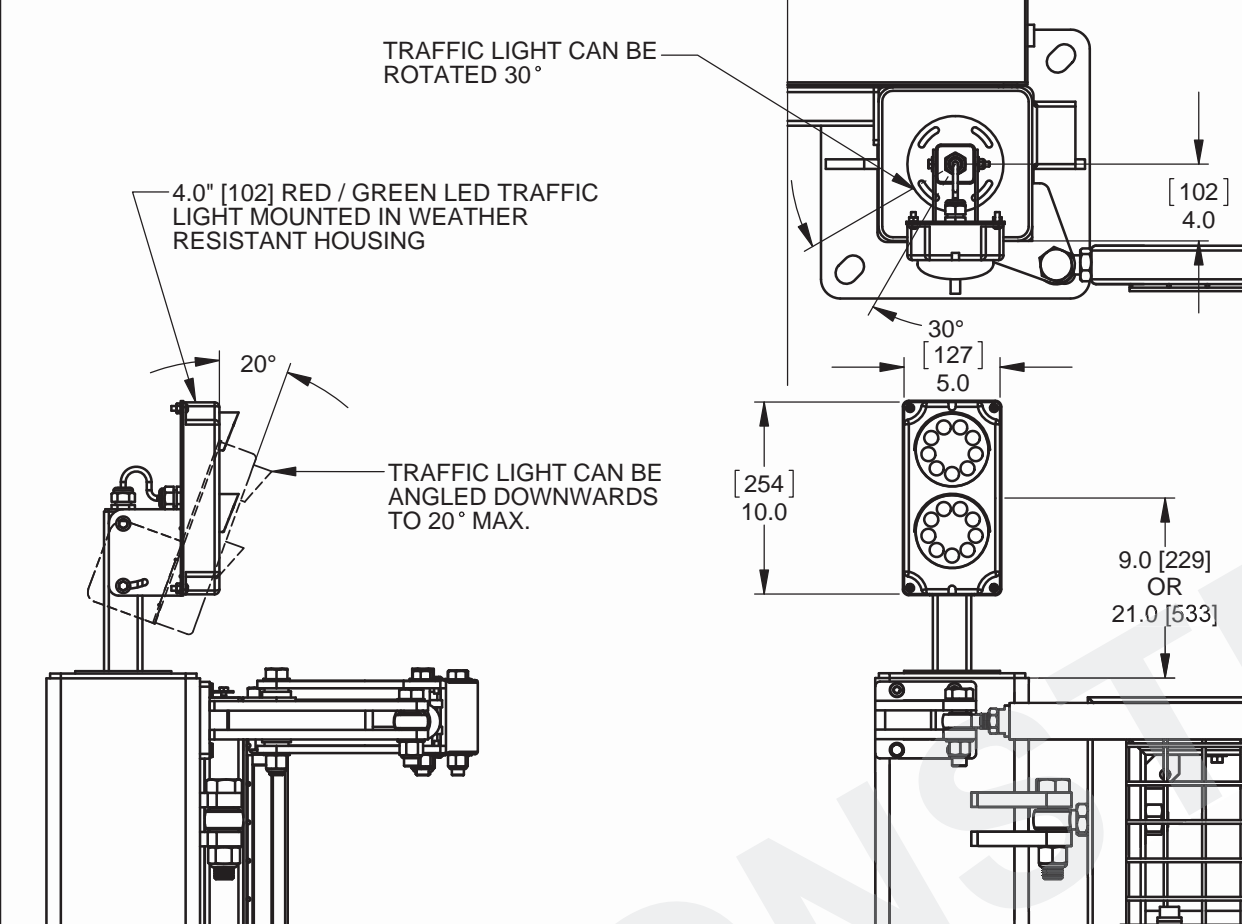
90 Lowson Crescent,
Winnipeg, Manitoba, Canada R3P 2H8
Phone: 1-866-300-1110
Fax: 1-204-284-1868
Web: www.wallaceintl.com

Description: FOLDSMART XT TRACKLESS BI-FOLD GATE SYSTEM GENERAL NOTES AND OPTIONS	
Customer / Project Name: -	
Finish: SEE NOTES	Date: 4/27/2015
Drawing No. FSXT-04-27-15	Rev. Sheet: A 2 of 6

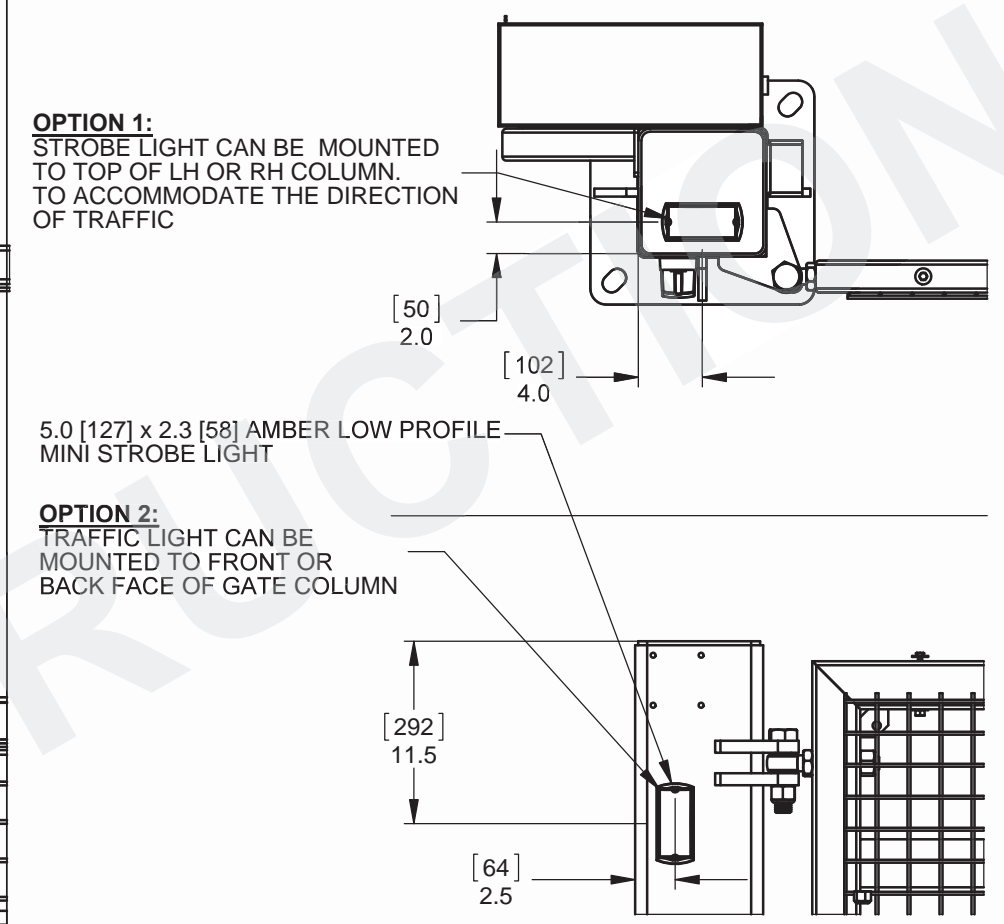
DETAIL G - PHOTOCELLS



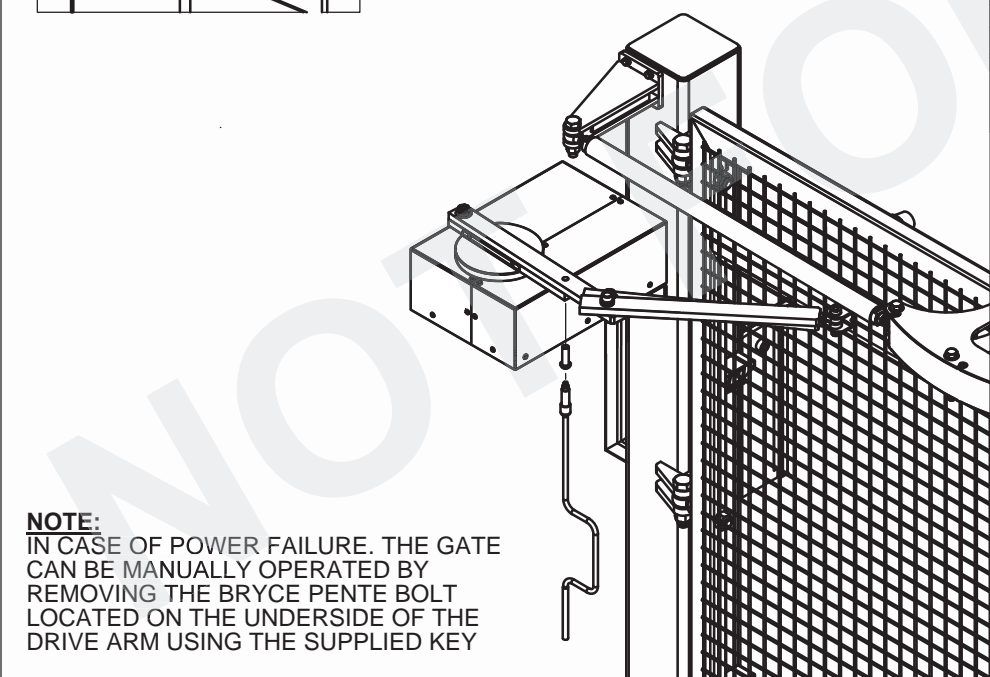
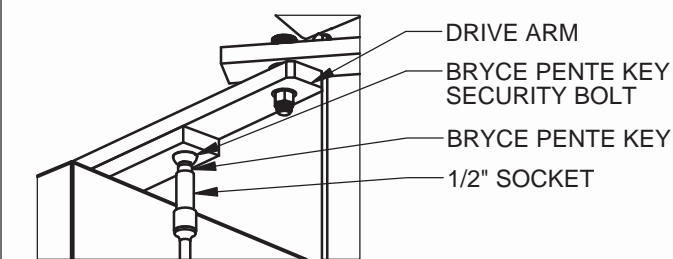
DETAIL H - 4" LED TRAFFIC LIGHT



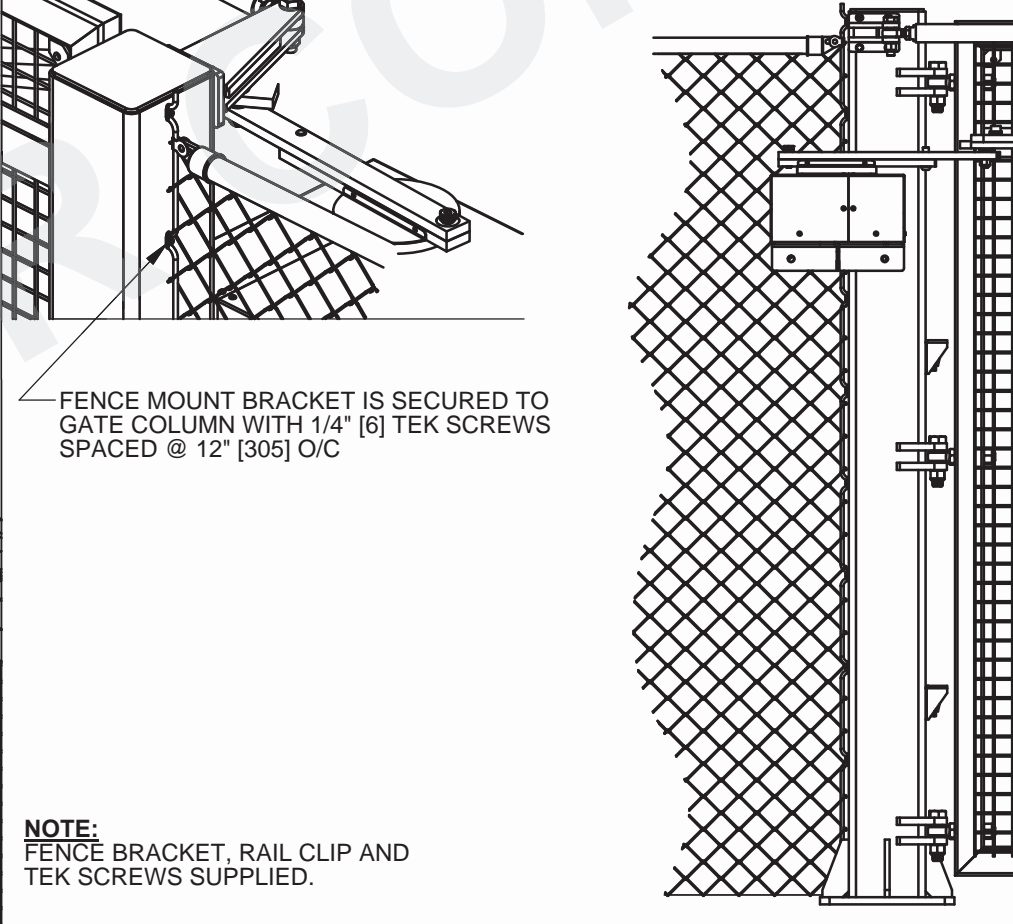
DETAIL I - FLUSH MOUNTED STROBE LIGHT



DETAIL J - MANUAL OPERATION RELEASE POINT



DETAIL K - FENCE MOUNT BRACKET

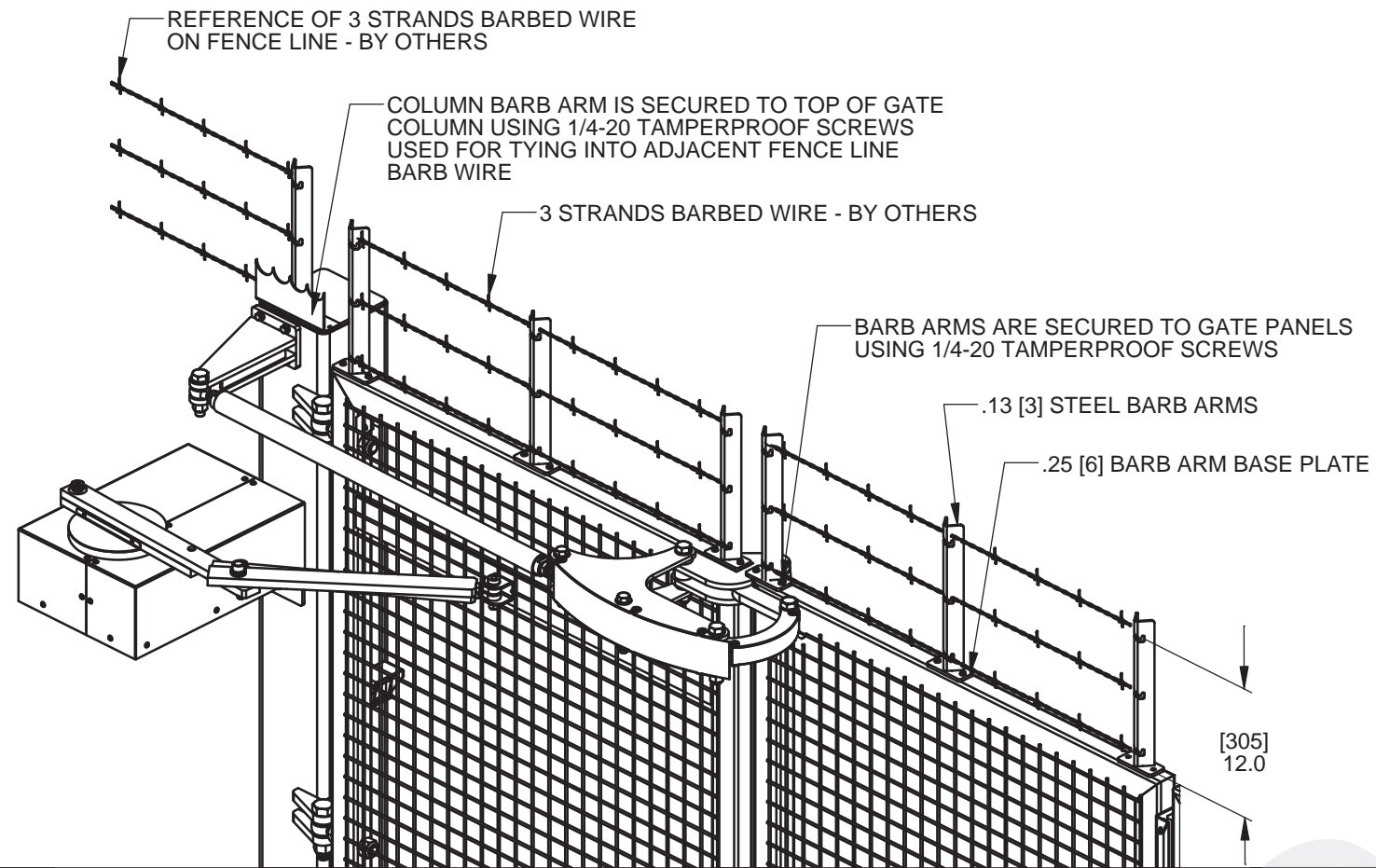


W WALLACE INTERNATIONAL

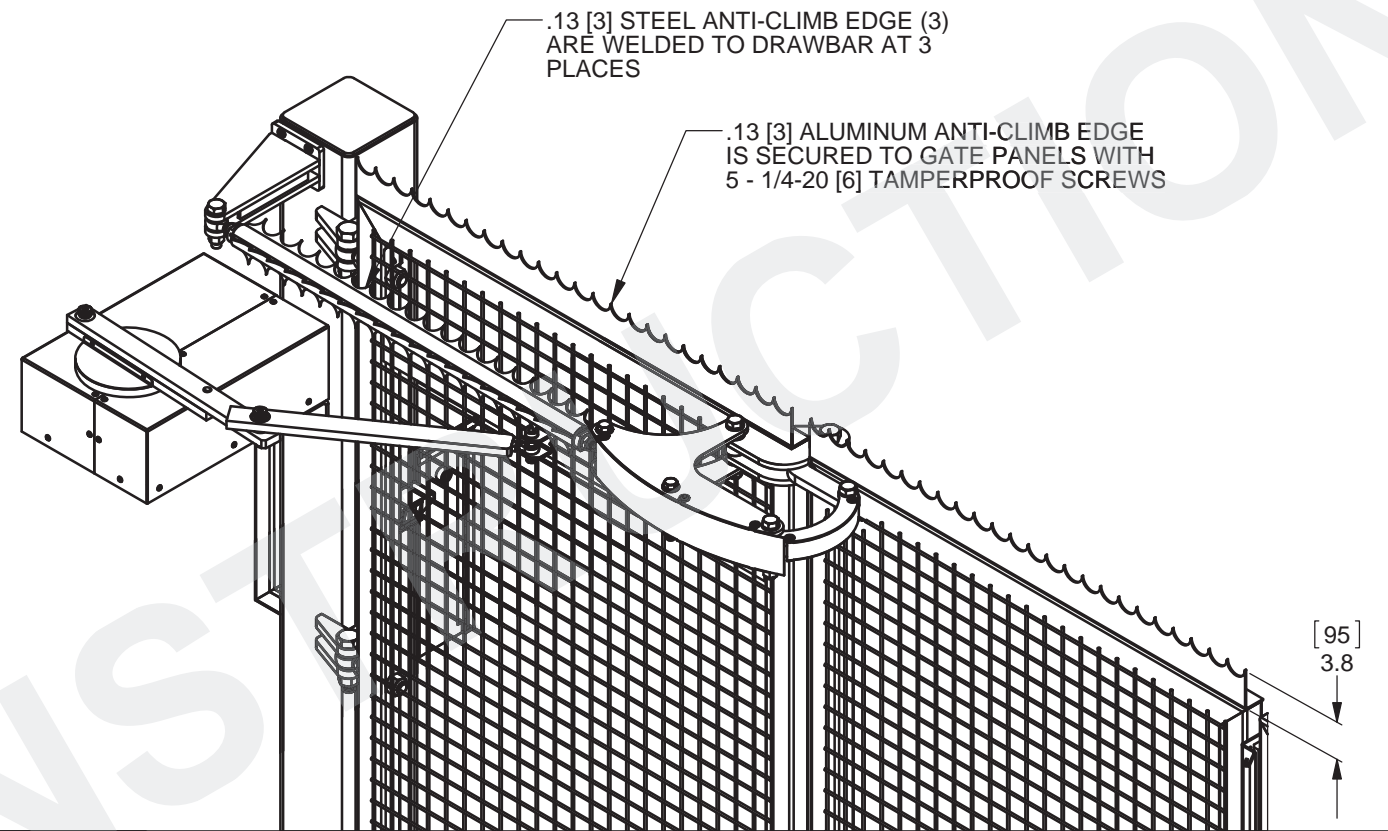
90 Lawson Crescent,
Winnipeg, Manitoba, Canada R3P 2H8
Phone: 1-866-300-1110
Fax: 1-204-284-1868
Web: www.wallaceintl.com

Description:		FOLDSMART XT TRACKLESS BI-FOLD GATE SYSTEM GENERAL NOTES AND OPTIONS	
Customer / Project Name:		-	
Finish:	SEE NOTES	Date:	4/27/2015
Drawing No.	FSXT-04-27-15	Rev.	A
		Sheet:	3 of 6

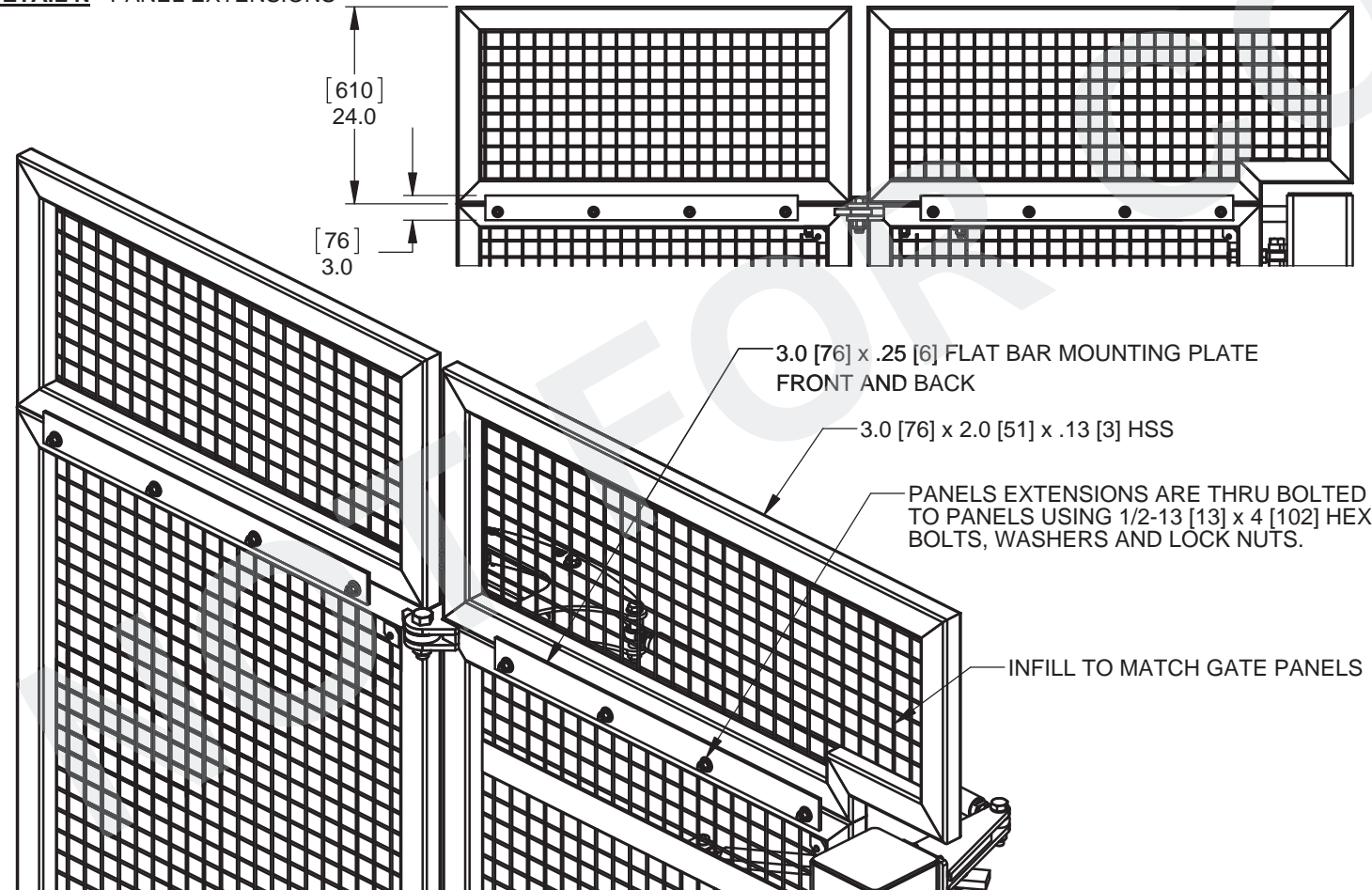
DETAIL L - BARB ARM ANTI-CLIMB



DETAIL M - ANTI-CLIMB EDGE

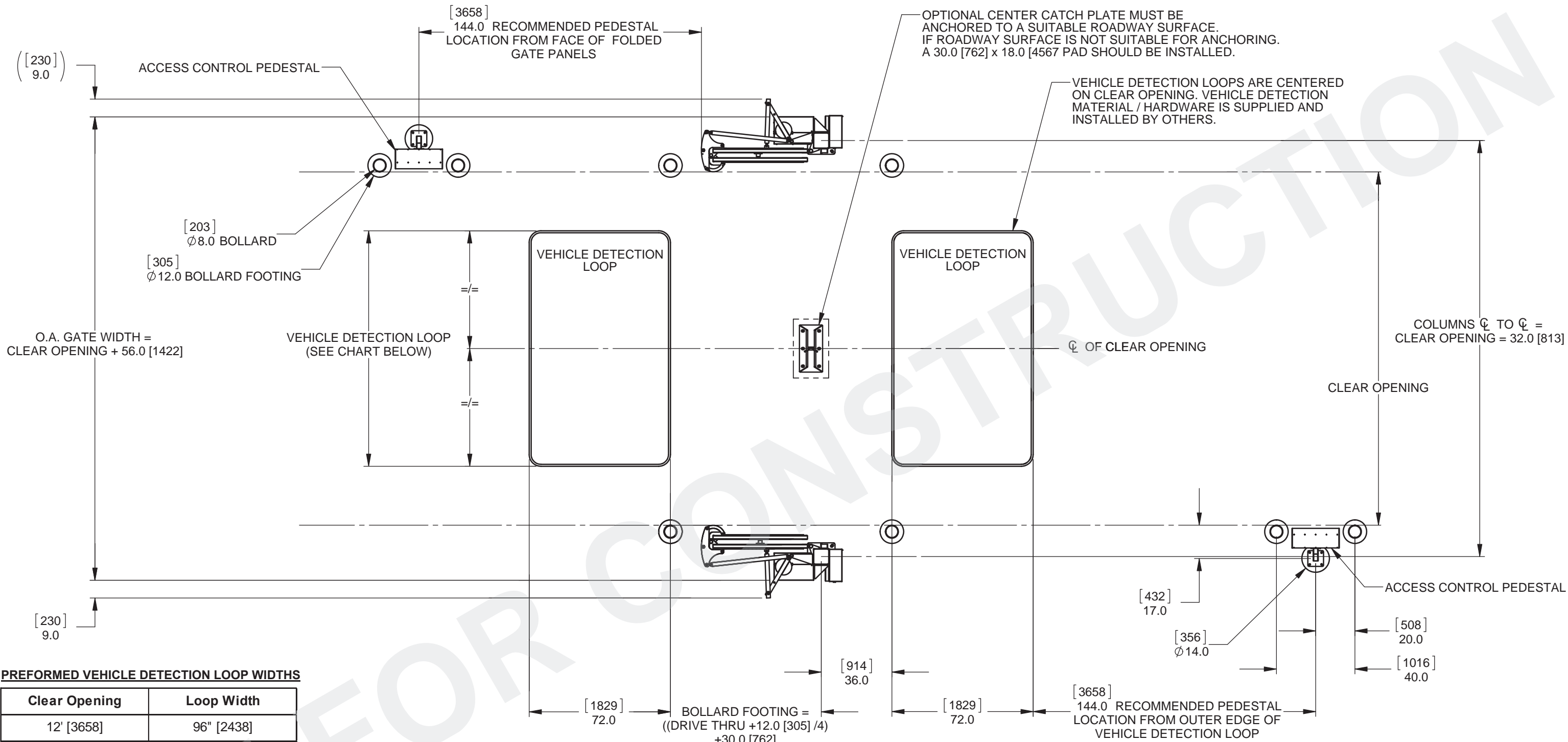


DETAIL N - PANEL EXTENSIONS



90 Lowson Crescent,
Winnipeg, Manitoba, Canada R3P 2H8
Phone: 1-866-300-1110
Fax: 1-204-284-1868
Web: www.wallaceintl.com

Description:		FOLDSMART XT TRACKLESS BI-FOLD GATE SYSTEM GENERAL NOTES AND OPTIONS	
Customer / Project Name:		-	
Finish:	SEE NOTES	Date:	4/27/2015
Drawing No.	FSXT-04-27-15	Rev.	A
		Sheet:	4 of 6



PREFORMED VEHICLE DETECTION LOOP WIDTHS

Clear Opening	Loop Width
12' [3658]	96" [2438]
14' [4267]	120" [3048]
16' [4877]	144" [3658]
18' [5486]	168" [4267]
20' [6096]	192" [4877]
22' [6706]	216" [5486]
24' [7315]	240" [6096]
26' [7925]	264" [6706]
28' [8534]	288" [7315]
30' [9144]	312" [7925]

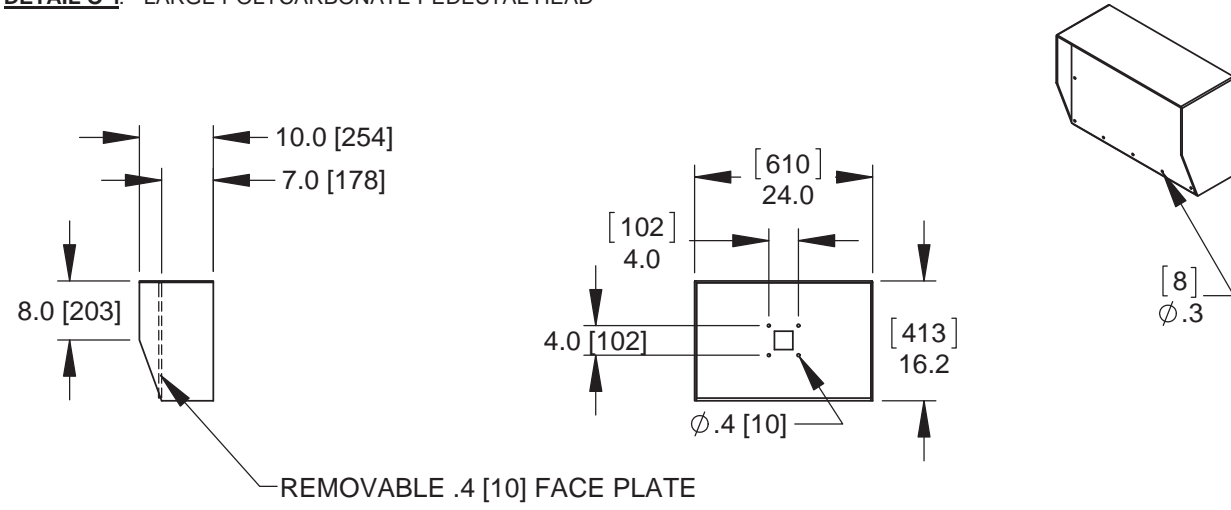
NOTE:
 BOLLARDS AND ACCESS CONTROL PEDESTALS ARE SHOWN IN MANUFACTURERS RECOMMENDED LOCATIONS. BOLLARD MATERIALS ARE SUPPLIED AND INSTALLED BY OTHERS.



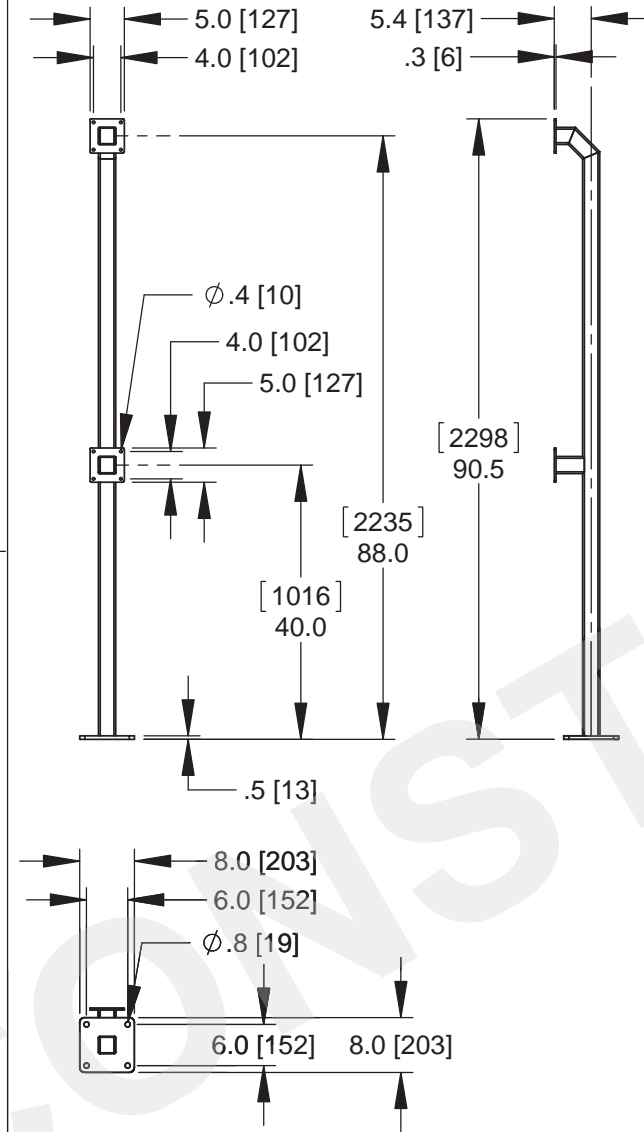
90 Lowson Crescent,
 Winnipeg, Manitoba, Canada R3P 2H8
 Phone: 1-866-300-1110
 Fax: 1-204-284-1868
 Web: www.wallaceintl.com

Description: FOLDSMART XT TRACKLESS BI-FOLD GATE SYSTEM FOOTINGS / VEHICLE LOOP LOCATIONS	
Customer / Project Name: -	
Finish: SEE NOTES	Date: 4/27/2015
Drawing No. FSXT-04-27-15	Rev. A Sheet: 5 of 6

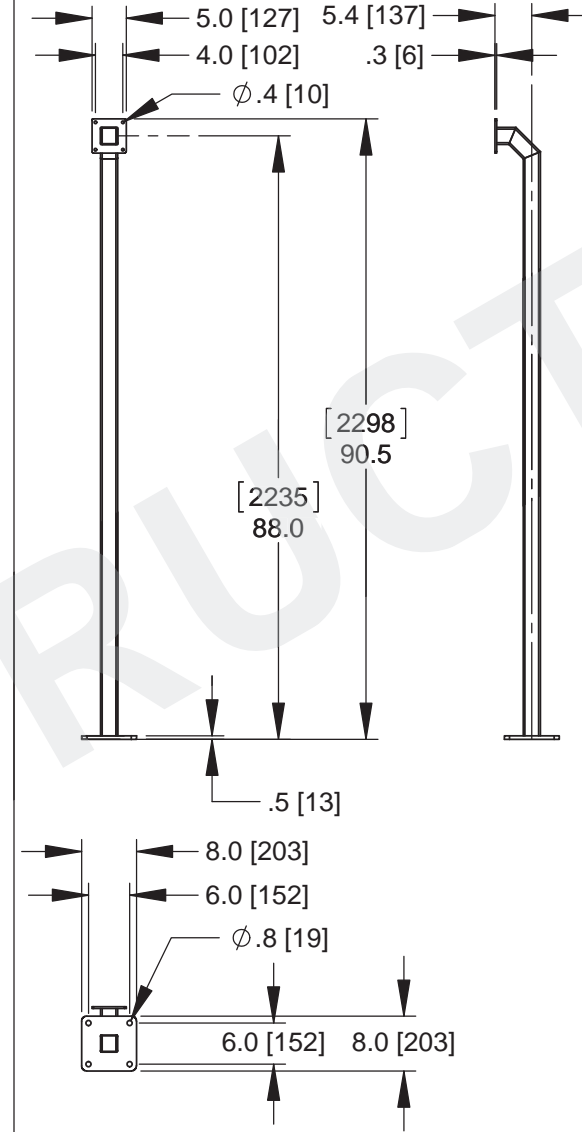
DETAIL O-1 - LARGE POLYCARBONATE PEDESTAL HEAD



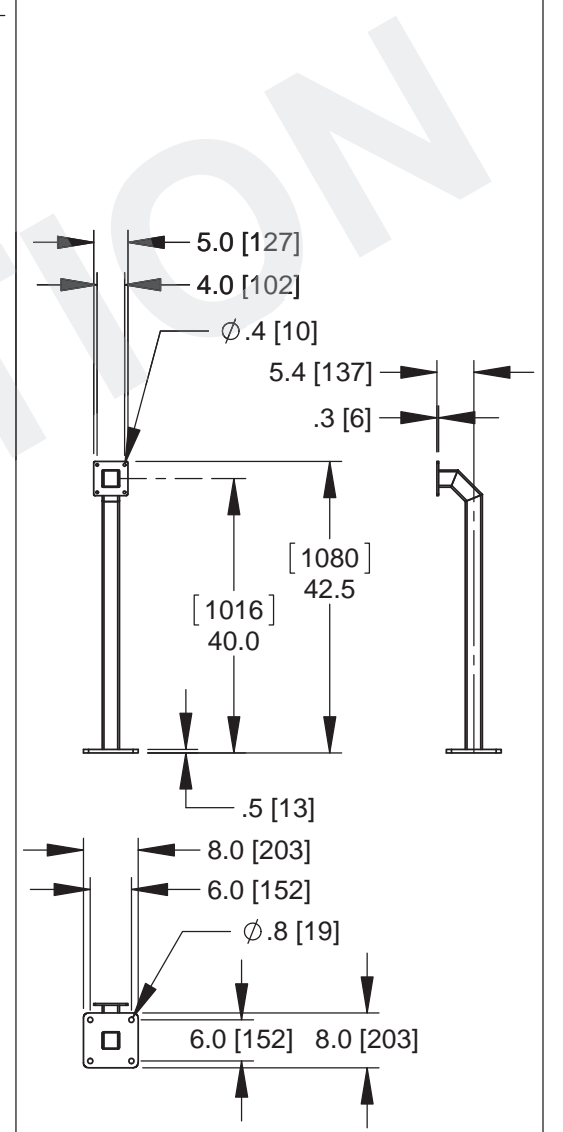
DETAIL P-1 - DUAL HEIGHT PEDESTAL STAND



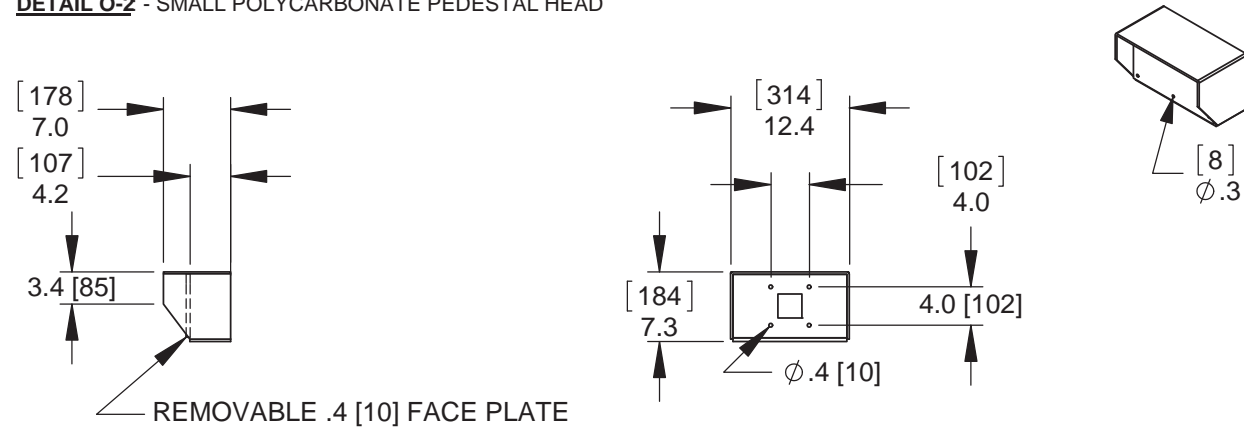
DETAIL P-2 - SINGLE HEIGHT PEDESTAL STAND




DETAIL P-3 - SINGLE HEIGHT PEDESTAL STAND



DETAIL O-2 - SMALL POLYCARBONATE PEDESTAL HEAD



NOT FOR CONSTRUCTION

 WALLACE INTERNATIONAL <small>90 Lowson Crescent, Winnipeg, Manitoba, Canada R3P 2H8 Phone: 1-866-300-1110 Fax: 1-204-284-1868 Web: www.wallaceintl.com</small>	Description:		FOLDSMART XT TRACKLESS BI-FOLD GATE SYSTEM ACCESS CONTROL PEDESTALS	
	Customer / Project Name:			
	Finish:		Date:	
	Drawing No.		Rev.	
FSXT-04-27-15		A		4/27/2015 6 of 6