

NOTE: DIMENSIONS ARE SHOWN IN INCHES. DIMENSIONS SHOWN IN BRACKETS [] ARE IN MILLIMETERS

Alpha Model	H	A	B	C	D	U max
16 / 6	72.0 [1829]	199.6 [5069]	100.2 [2546]	199.6 [5069]	192.0 [4876]	507.0 [12879]
16 / 8	96.0 [2438]					
20 / 6	72.0 [1829]	247.6 [6288]	87.7 [2227]	247.6 [6288]	240.0 [6095]	590.5 [14998]
20 / 8	96.0 [2438]					
24 / 6	72.0 [1829]	295.8 [7513]	110.3 [2802]	295.8 [7513]	288.0 [7320]	709.6 [18023]
24 / 8	96.0 [2438]					
30 / 6	72.0 [1829]	367.7 [9340]	121.0 [3075]	367.7 [9340]	360.0 [9147]	864.2 [21950]
30 / 8	96.0 [2438]					
40 / 6	72.0 [1829]	491.7 [12489]	146.7 [3726]	491.7 [12489]	484.0 [12296]	1137.8 [28899]
40 / 8	96.0 [2438]					

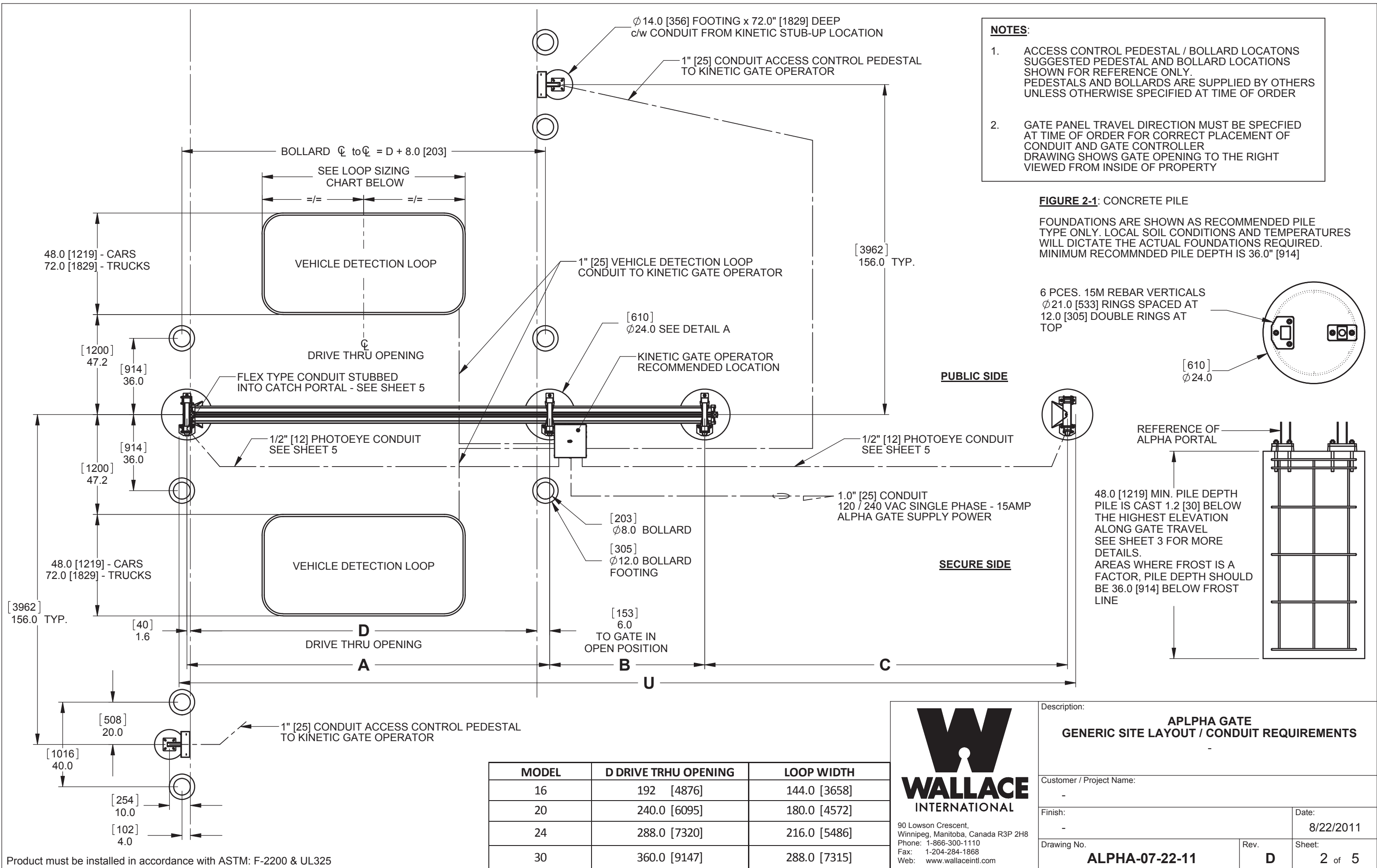
NOTES:

- STANDARD FINISH - HOT DIPPED GALVANIZED FINISH ON ALL STEEL COMPONENTS. ALUMINUM COMPONENTS MILL FINISH.
- SEE SHEETS 2 AND 3 FOR GENERIC SITE LAYOUT AND INSTALLATION NOTES
- SEE SHEET 4 FOR STANDARD PART DETAILS AND OPTIONAL COMPONENTS
- SEE SHEETS 2 & 5 FOR CONDUIT LOCATIONS AND REQUIREMENTS



90 Lowson Crescent,
Winnipeg, Manitoba, Canada R3P 2H8
Phone: 1-866-300-1110
Fax: 1-204-284-1868
Web: www.wallaceintl.com

Description: ALPHA GATE STANDARD DIMENSIONS	
Customer / Project Name: -	
Finish: SEE NOTES	Date: 7/22/2011
Drawing No. ALPHA-07-22-11	Rev. D Sheet: 1 of 5



Product must be installed in accordance with ASTM: F-2200 & UL325

FIGURE 3-1

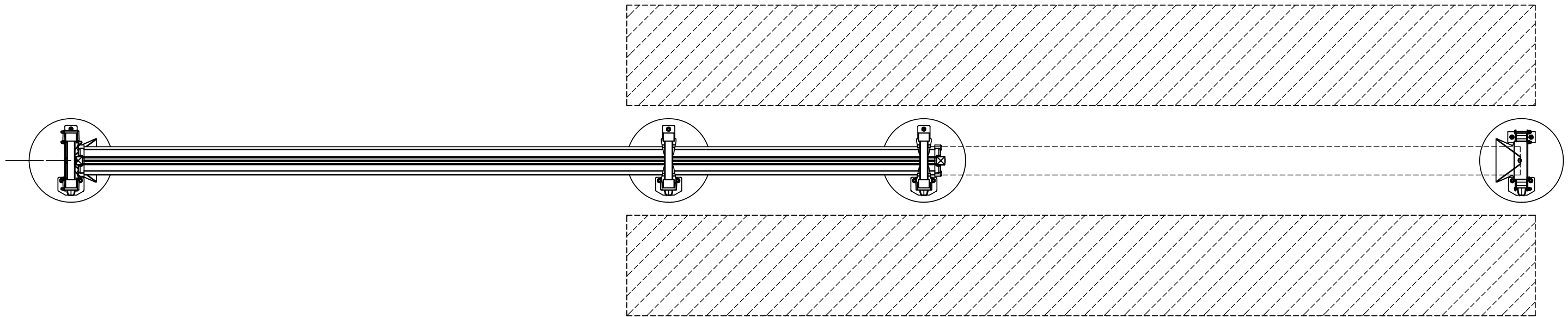


FIGURE 3-2

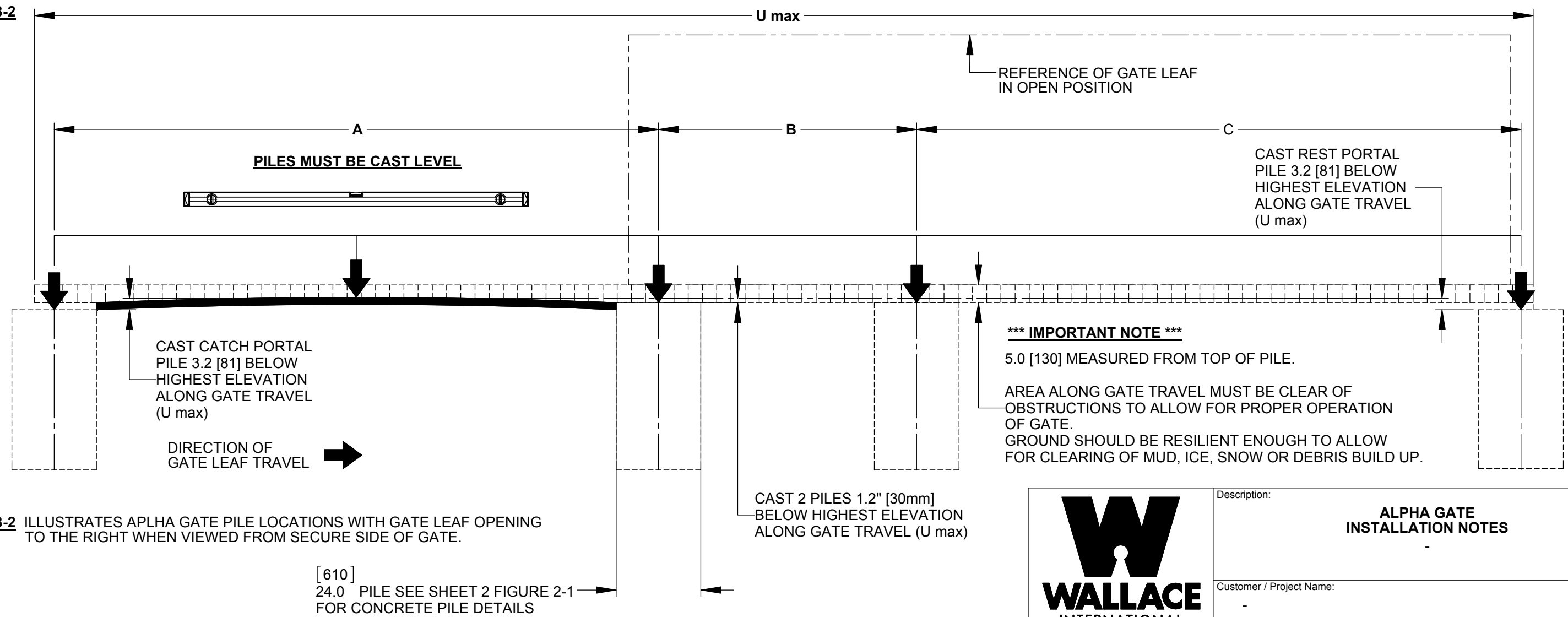



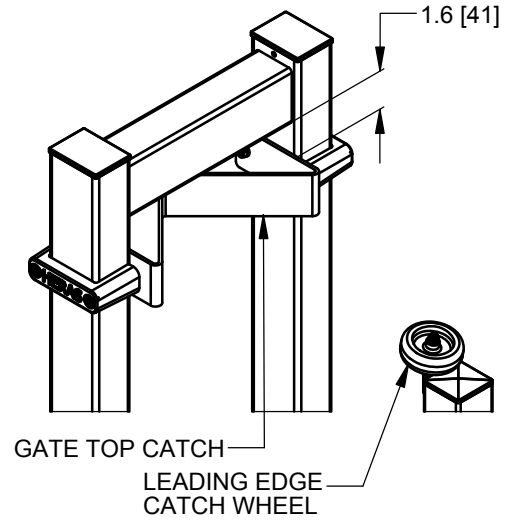
FIGURE 3-2 ILLUSTRATES ALPHA GATE PILE LOCATIONS WITH GATE LEAF OPENING TO THE RIGHT WHEN VIEWED FROM SECURE SIDE OF GATE.

Product must be installed in accordance with ASTM: F-2200 & UL325

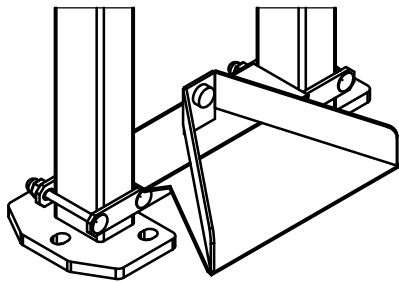
 <p>90 Lawson Crescent, Winnipeg, Manitoba, Canada R3P 2H8 Phone: 1-866-300-1110 Fax: 1-204-284-1868 Web: www.wallaceintl.com</p>	Description:		ALPHA GATE INSTALLATION NOTES	
	Customer / Project Name:		-	
	Finish:	-	Date:	7/22/2011
	Drawing No.	ALPHA-07-22-11	Rev.	D
		Sheet:	3 of 5	

DETAIL 4-1 - CATCH PORTAL DETAILS

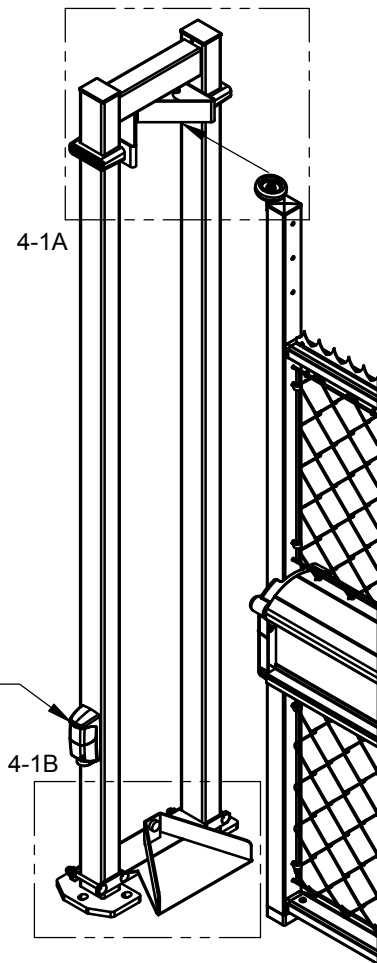
DETAIL 4-1A - LEADING EDGE CATCH WHEEL



DETAIL 4-1B - GATE CATCH SHOE / RUN ON PLATE

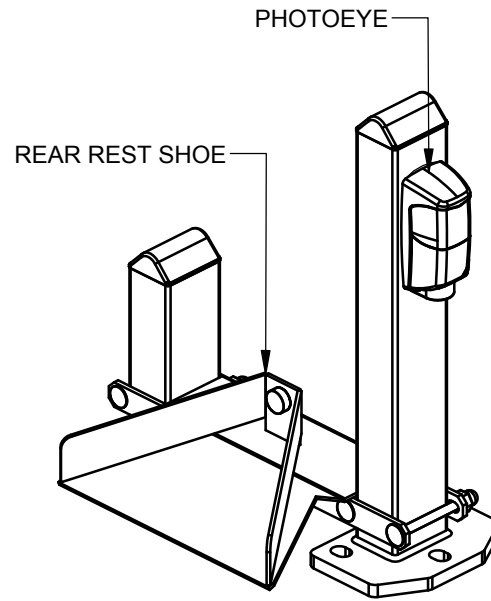


PHOTOEYE

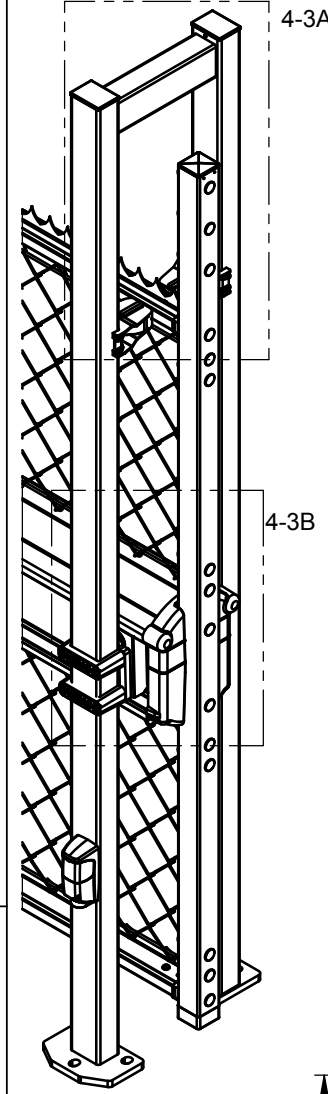


DETAIL 4-2 - REAR REST SHOE

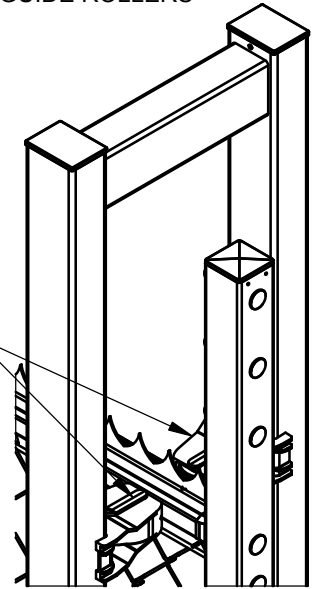
REAR REST SHOE WILL SUPPORT GATE PANEL IF THE GATE IS TO BE LEFT IN THE OPEN POSITION FOR EXTENDED PERIODS OF TIME.



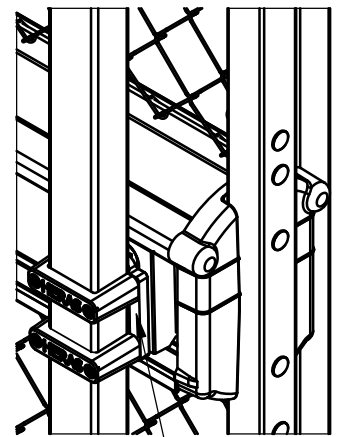
DETAIL 4-3 - ROLLERS



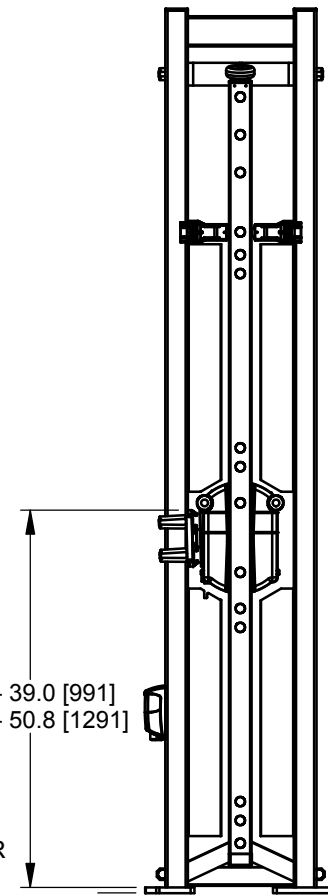
DETAIL 4-3A TOP RAIL GUIDE ROLLERS



DETAIL 4-3B ROLLER SET

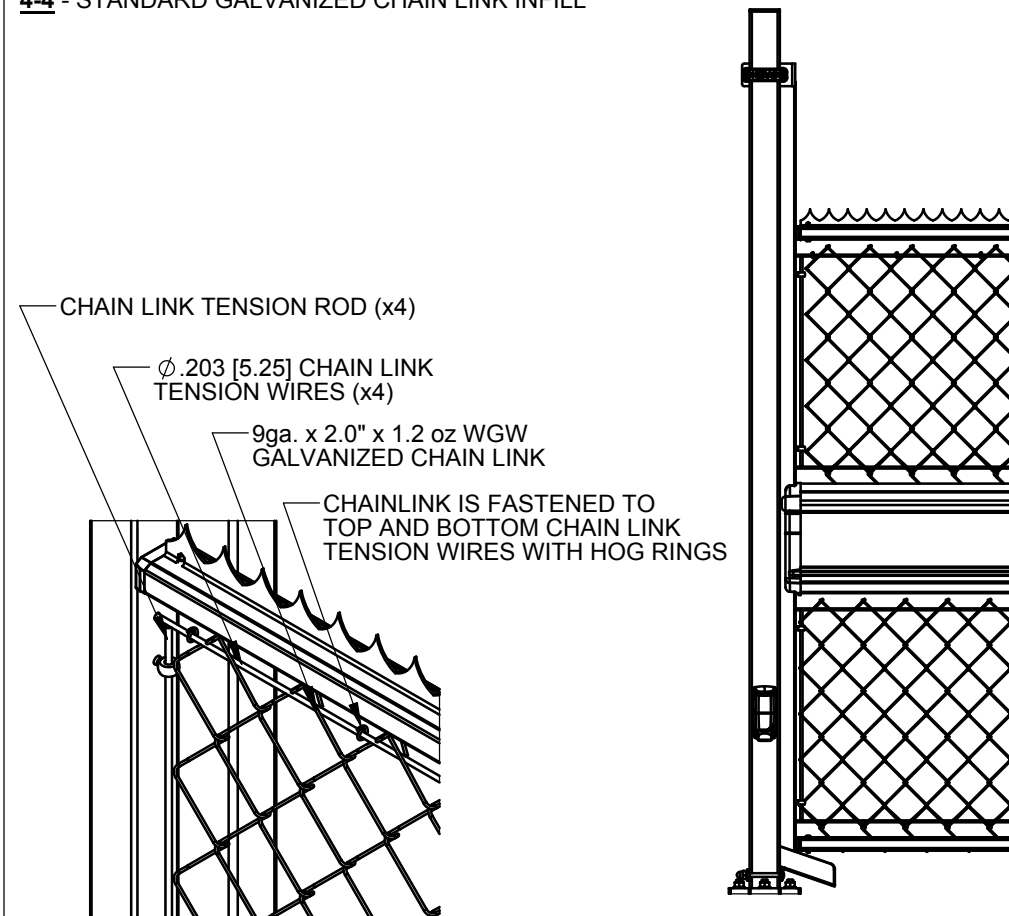


TOP RAIL GUIDE ROLLERS (x4)



DETAIL 4-3C
CANTILEVER ROLLER HEIGHTS

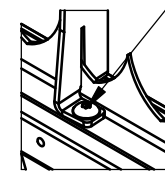
4-4 - STANDARD GALVANIZED CHAIN LINK INFILL



4-5 - BARB WIRE ANTI-Climb

DETAIL 4-5A - BARB ARM MOUNTING

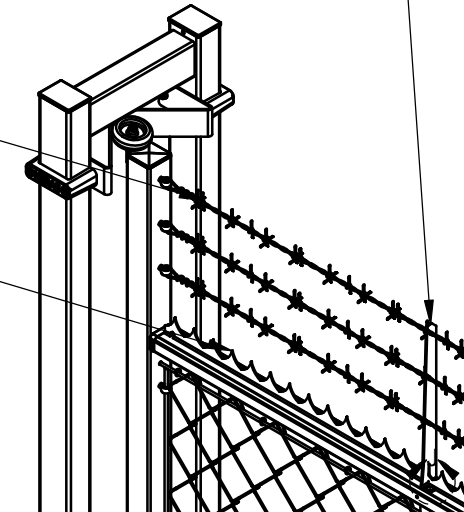
BARB ARM IS SECURED TO TOP RAIL USING 1/4" [6] TAMPERPROOF SCREWS AT EVERY 3rd PICKET LOCATION. 2 SCREWS PER BARB ARM



BARB ARM SECURED TO TOP RAIL. SEE **DETAIL 4-5A**

3 STRANDS BARBED WIRE SECURED TO PANEL END POST

STANDARD SERRATED TOP RAIL



90 Lowson Crescent,
Winnipeg, Manitoba, Canada R3P 2H8
Phone: 1-866-300-1110
Fax: 1-204-284-1868
Web: www.wallaceintl.com

Description:
**ALPHA GATE
STANDARD / OPTIONAL COMPONENTS**

Customer / Project Name:

Finish:

Drawing No.

ALPHA-07-22-11

Date:

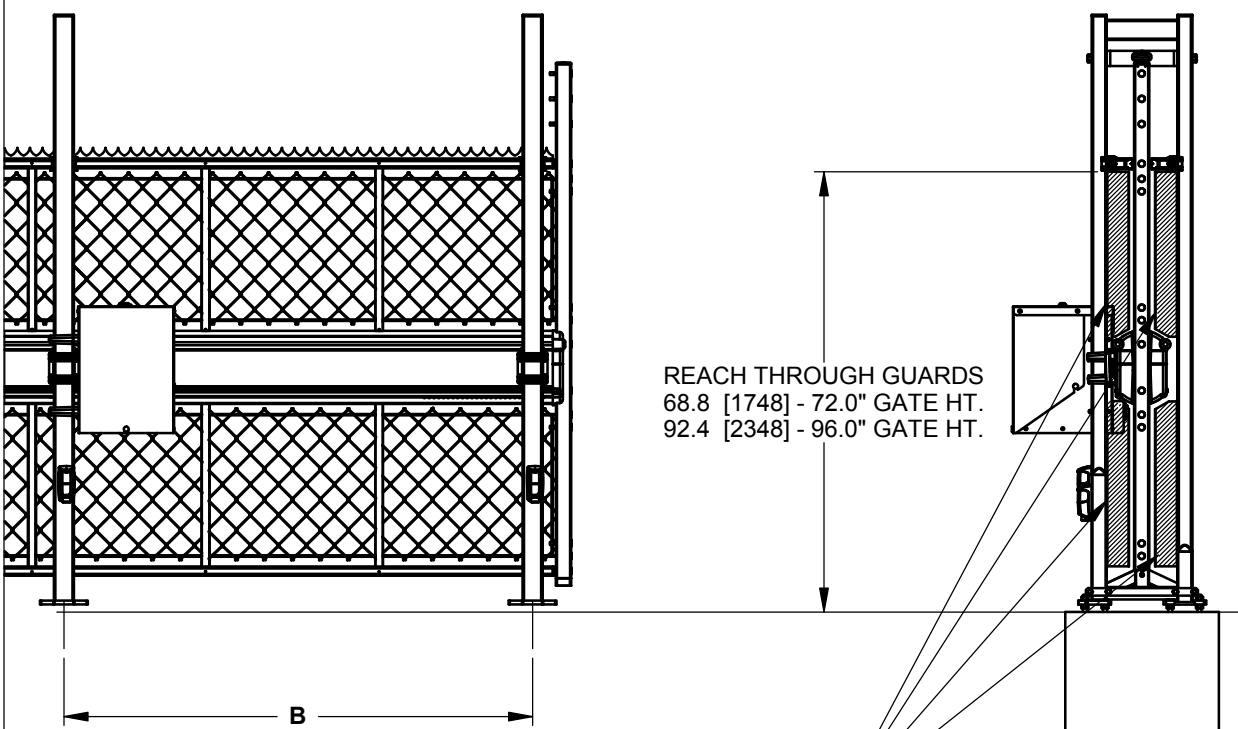
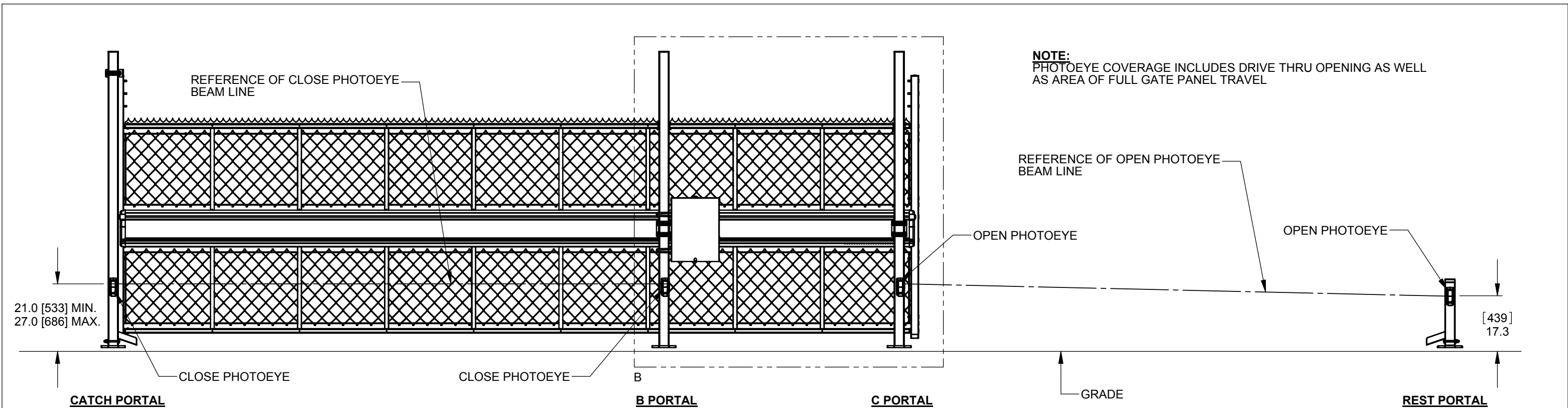
7/22/2011

Rev.

D

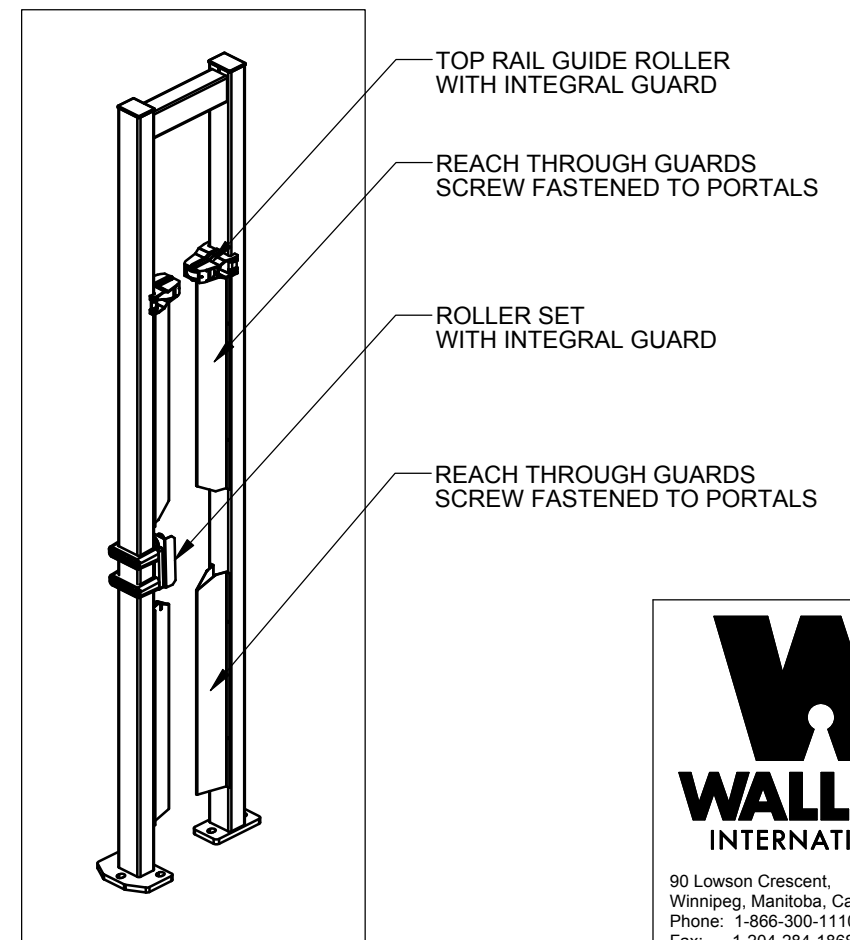
Sheet:

4 of 5



B PORTAL HAS "REACH THROUGH" GUARDS SHOWN IN SHADED AREA PER ASTM F2200 - Paragraph 6.1.4. MAXIMUM GAP BETWEEN GATE PANEL AND FIXED STATIONARY OBJECT SHOULD NOT EXCEED 2.25" [57]

B PORTAL DETAIL - SAFETY DEVICES



90 Lowson Crescent,
Winnipeg, Manitoba, Canada R3P 2H8
Phone: 1-866-300-1110
Fax: 1-204-284-1868
Web: www.wallaceintl.com

Description:		ALPHA GATE PHOTOEYES / SAFETY DEVICES	
Customer / Project Name:		-	
Finish:	-	Date:	7/22/2011
Drawing No.	ALPHA-07-22-11	Rev.	D
		Sheet:	5 of 5