

NOTE: DIMENSIONS ARE SHOWN IN INCHES. DIMENSIONS SHOWN IN BRACKETS [] ARE IN MILLIMETERS

Model	H	A	B	C	D	U max	Beam Length / (Qty)
20/20/6	72.0 [1829]	495.1 [12576]	87.7 [2227]	247.6 [6288]	483.1 [12271]	1174.3 [29826]	362.7 [9212]
20/20/8	96.0 [2438]						
24/24/6	72.0 [1829]	591.6 [15026]	110.3 [2802]	295.8 [7513]	579.6 [14721]	1412.4 [35876]	423.8 [10765]
24/24/8	96.0 [2438]						
30/30/6	72.0 [1829]	735.4 [18680]	121.0 [3075]	367.7 [9340]	723.4 [18375]	1721.7 [43730]	507.0 [12879]
30/30/8	96.0 [2438]						
40/40/6	72.0 [1829]	983.4 [24978]	146.7 [3726]	491.7 [12489]	971.3 [24672]	2268.8 [52268]	167.3 [4250] (x2)
40/40/8	96.0 [2438]						

NOTES:

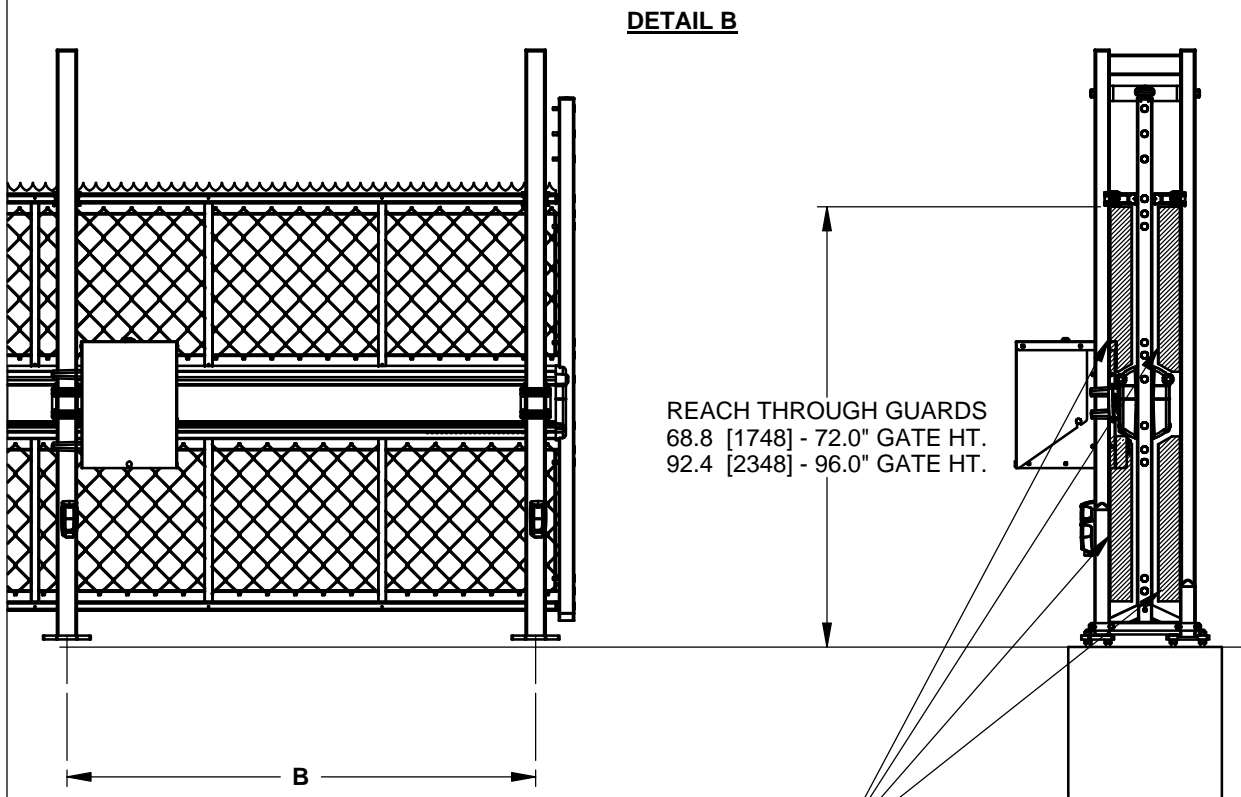
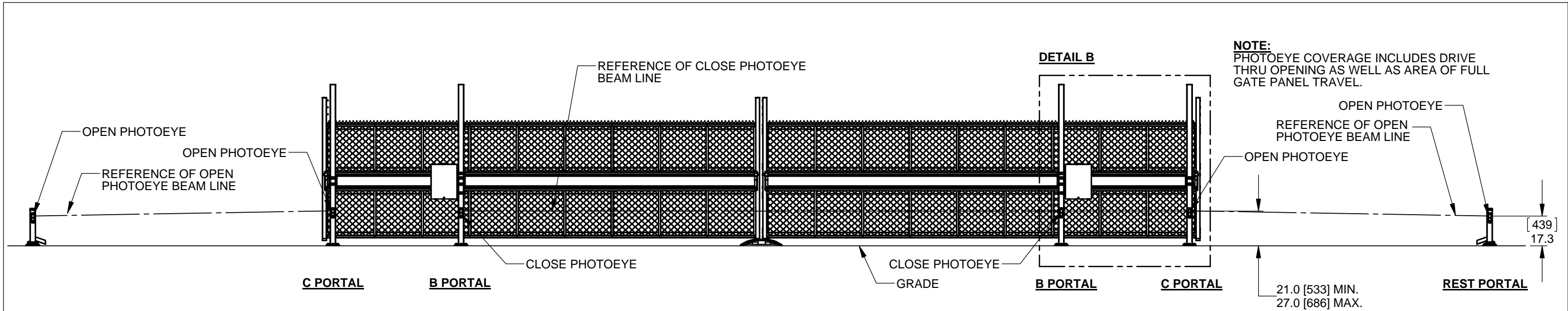
- STANDARD FINISH - HOT DIPPED GALVANIZED FINISH ON ALL STEEL COMPONENTS. ALUMINUM COMPONENTS MILL FINISH.

Product must be installed in accordance with ASTM: F-2200 & UL325

W
WALLACE
INTERNATIONAL

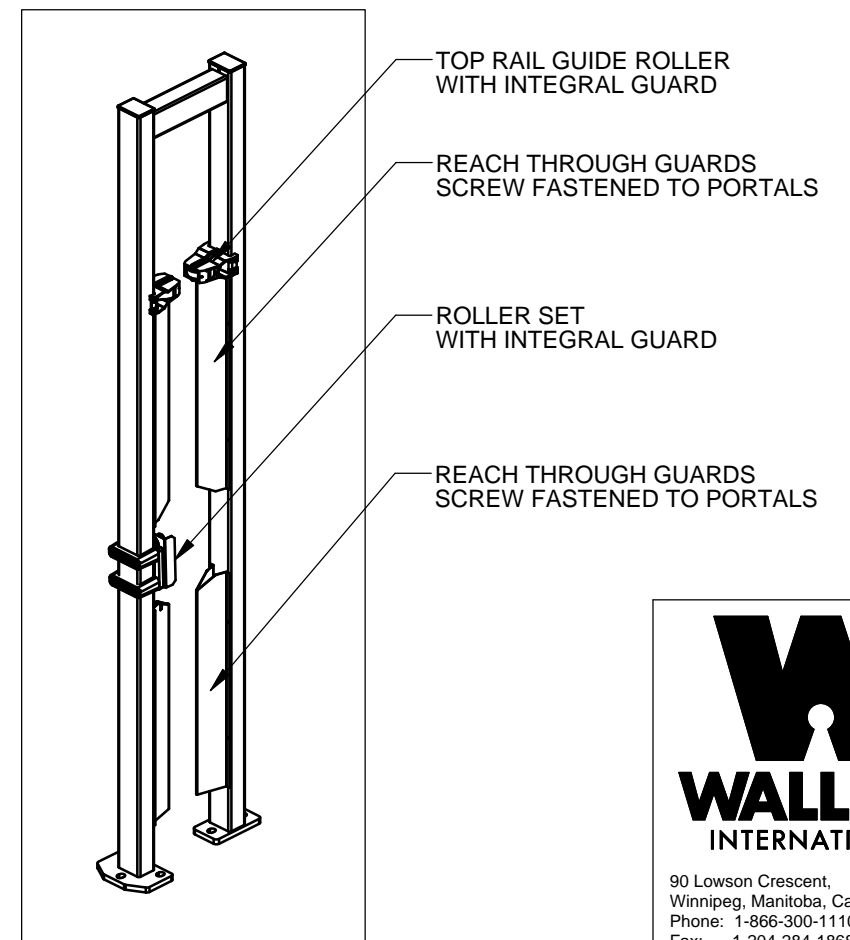
90 Lowson Crescent,
Winnipeg, Manitoba, Canada R3P 2H8
Phone: 1-866-300-1110
Fax: 1-204-284-1868
Web: www.wallaceintl.com

Description: DOUBLE ALPHA GATE STANDARD DIMENSIONS	
Customer / Project Name: -	
Finish: SEE NOTES	Date: 7/22/2011
Drawing No. ALPHA-DBL-09-06-11	Rev. A Sheet: 1 of 5



B PORTAL HAS "REACH THROUGH" GUARDS SHOWN IN SHADED AREA PER ASTM F2200 - Paragraph 6.1.4, MAXIMUM GAP BETWEEN GATE PANEL AND FIXED STATIONARY OBJECT SHOULD NOT EXCEED 2.25" [57]

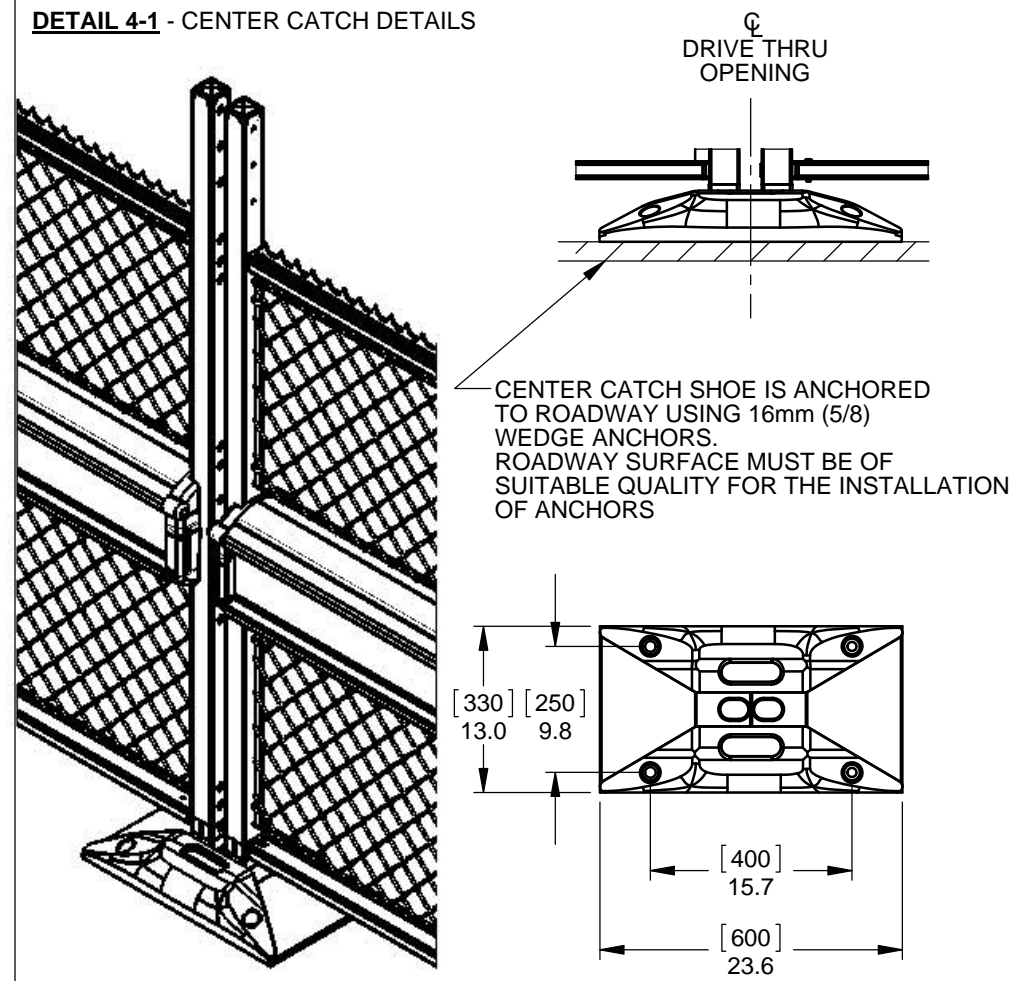
B PORTAL DETAIL - SAFETY DEVICES



90 Lowson Crescent,
Winnipeg, Manitoba, Canada R3P 2H8
Phone: 1-866-300-1110
Fax: 1-204-284-1868
Web: www.wallaceintl.com

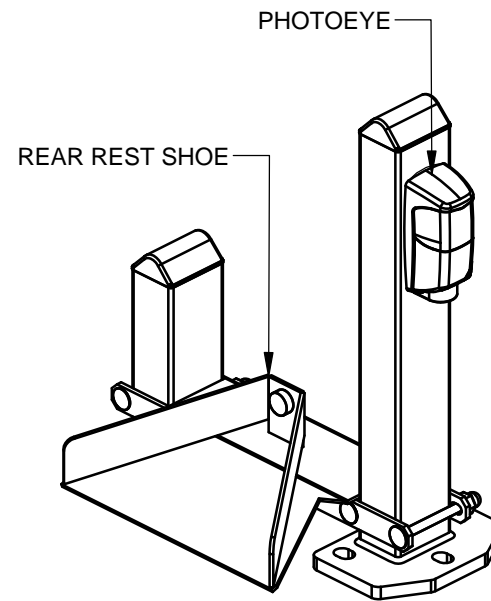
Description:		DOUBLE ALPHA GATE PHOTOEYES / SAFETY DEVICES	
Customer / Project Name:		-	
Finish:	-	Date:	7/22/2011
Drawing No.	ALPHA-09-06-11	Rev.	A
		Sheet:	5 of 5

DETAIL 4-1 - CENTER CATCH DETAILS

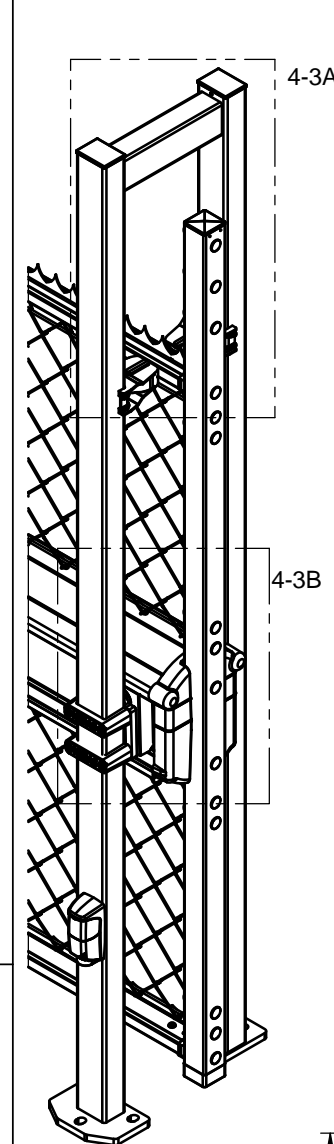


DETAIL 4-2 - REAR REST SHOE

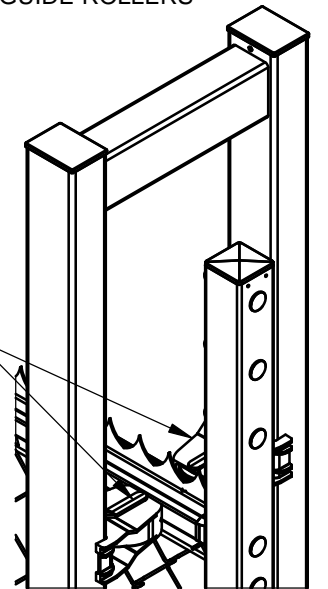
REAR REST SHOE WILL SUPPORT GATE PANEL IF THE GATE IS TO BE LEFT IN THE OPEN POSITION FOR EXTENDED PERIODS OF TIME.



DETAIL 4-3 - ROLLERS

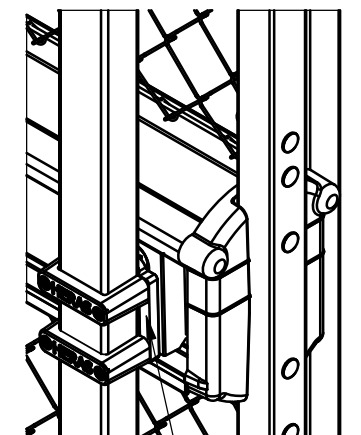


DETAIL 4-3A TOP RAIL GUIDE ROLLERS



TOP RAIL GUIDE ROLLERS (x4)

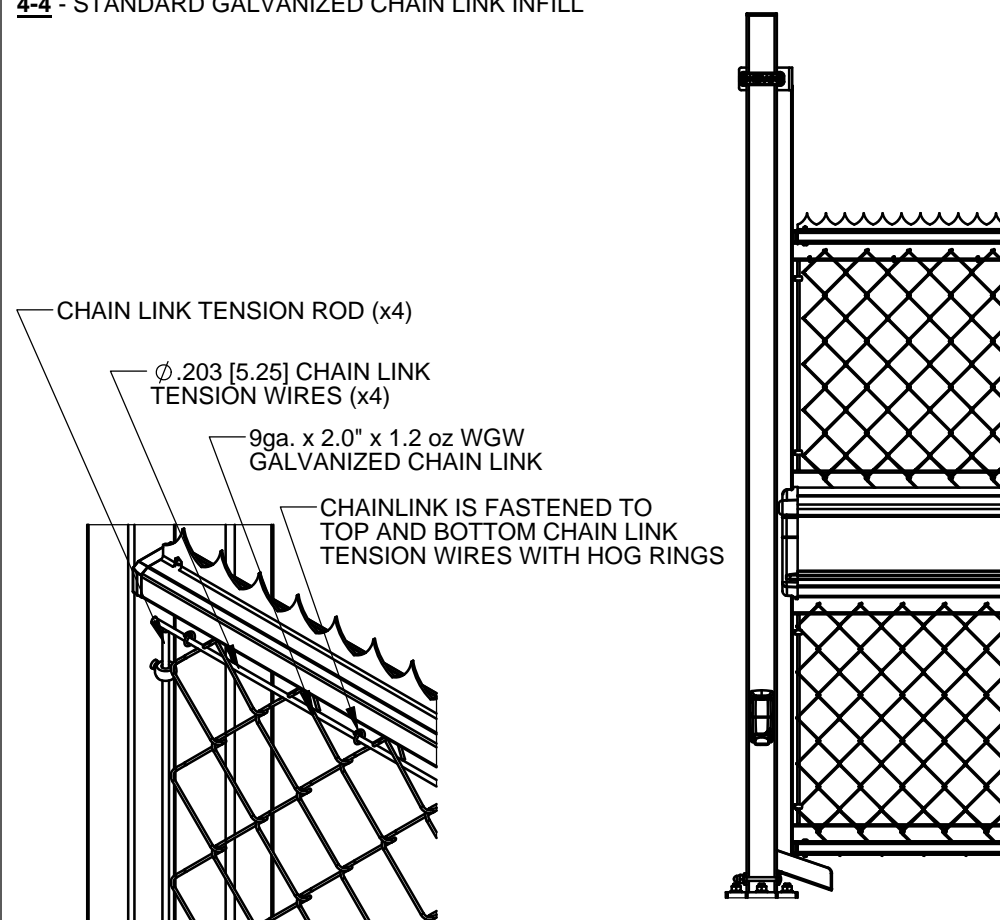
DETAIL 4-3B ROLLER SET



6 FT. - 39.0 [991]
8 FT. - 50.8 [1291]

DETAIL 4-3C CANTILEVER ROLLER HEIGHTS

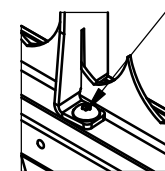
4-4 - STANDARD GALVANIZED CHAIN LINK INFILL



4-5 - BARB WIRE ANTI-CLIMB

DETAIL 4-5A - BARB ARM MOUNTING

BARB ARM IS SECURED TO TOP RAIL USING 1/4" [6] TAMPERPROOF SCREWS AT EVERY 3rd PICKET LOCATION. 2 SCREWS PER BARB ARM



BARB ARM SECURED TO TOP RAIL. SEE **DETAIL 4-5A**

3 STRANDS BARBED WIRE SECURED TO PANEL END POST

STANDARD SERRATED TOP RAIL



90 Lowson Crescent,
Winnipeg, Manitoba, Canada R3P 2H8
Phone: 1-866-300-1110
Fax: 1-204-284-1868
Web: www.wallaceintl.com

Description:
**DOUBLE ALPHA GATE
STANDARD / OPTIONAL COMPONENTS**

Customer / Project Name:

Finish:

Drawing No.

ALPHA-DBL-09-06-11

Date:
9/6/2011

Rev.

A

Sheet:
4 of 5

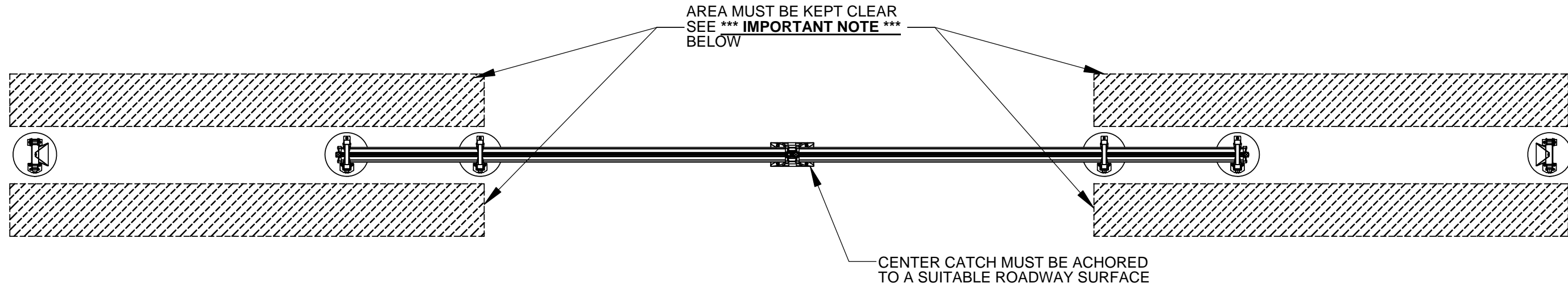


FIGURE 3-1

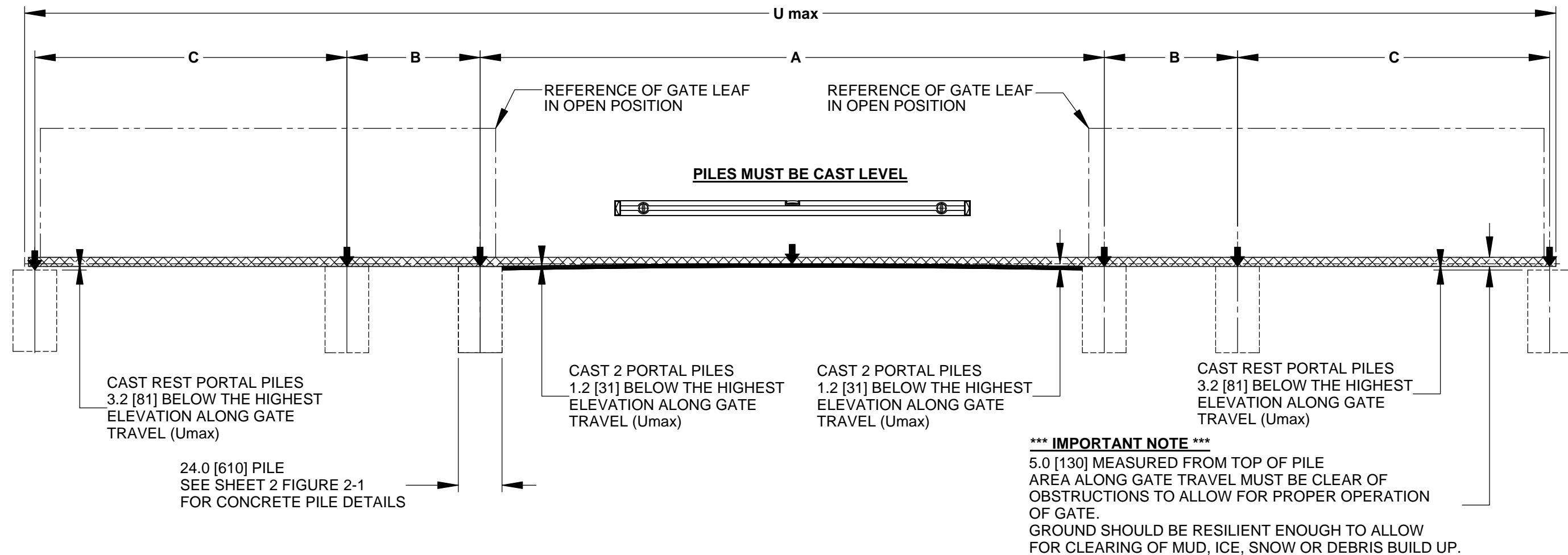


FIGURE 3-2

***** IMPORTANT NOTE *****
 5.0 [130] MEASURED FROM TOP OF PILE
 AREA ALONG GATE TRAVEL MUST BE CLEAR OF
 OBSTRUCTIONS TO ALLOW FOR PROPER OPERATION
 OF GATE.
 GROUND SHOULD BE RESILIENT ENOUGH TO ALLOW
 FOR CLEARING OF MUD, ICE, SNOW OR DEBRIS BUILD UP.



90 Lawson Crescent,
 Winnipeg, Manitoba, Canada R3P 2H8
 Phone: 1-866-300-1110
 Fax: 1-204-284-1868
 Web: www.wallaceintl.com

Description:		DOUBLE ALPHA GATE INSTALLATION NOTES	
Customer / Project Name:		-	
Finish:	-	Date:	9/6/2011
Drawing No.	ALPHA-DBL-09-06-11	Rev.	A
		Sheet:	3 of 5

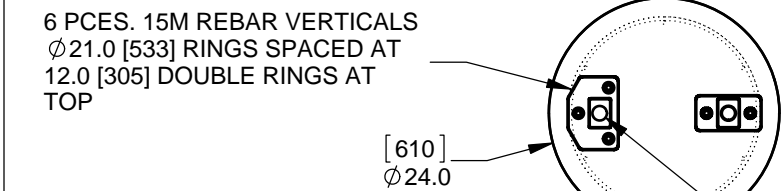
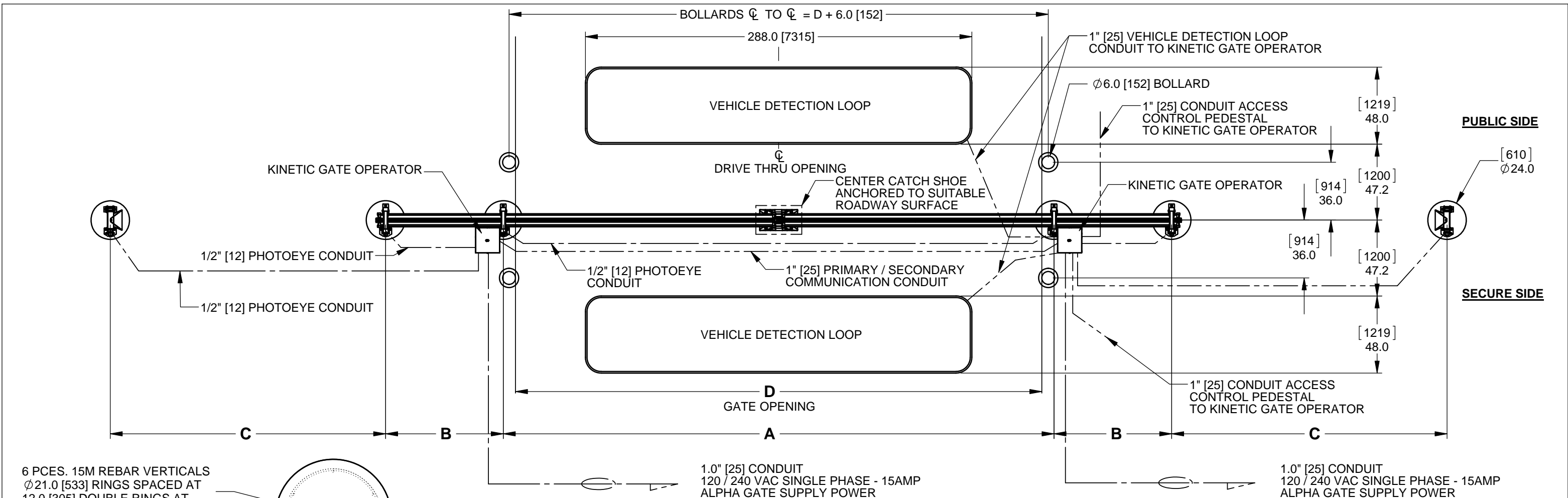
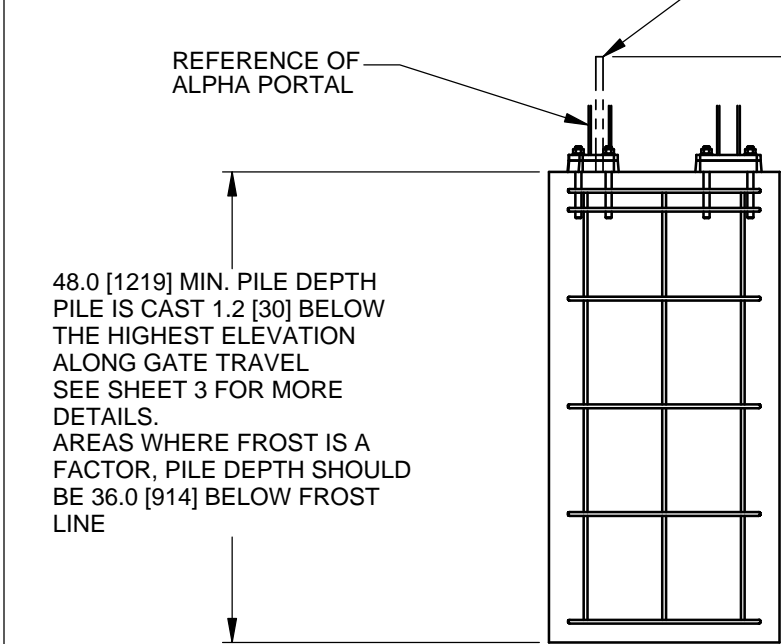


FIGURE 2-1: CONCRETE PILE

FOUNDATIONS ARE SHOWN AS RECOMMENDED PILE TYPE ONLY. LOCAL SOIL CONDITIONS AND TEMPERATURES WILL DICTATE THE ACTUAL FOUNDATIONS REQUIRED. MINIMUM RECOMMENDED PILE DEPTH IS 36.0" [914]



Product must be installed in accordance with ASTM: F-2200 & UL325

NOTES:

- SUGGESTED BOLLARD LOCATIONS SHOWN FOR REFERENCE ONLY. BOLLARDS ARE SUPPLIED BY OTHERS UNLESS OTHERWISE SPECIFIED AT TIME OF ORDER

MODEL	D DRIVE THRU OPENING	LOOP WIDTH
20 / 20	483.1 (12271)	360.0 (9144)
24 / 24	579.5 (14721)	432.0 (10973)
30 / 30	723.4 (18374)	576.0 (14630)
40 / 40	971.4 (24673)	792.0 (20117)

90 Lowson Crescent,
Winnipeg, Manitoba, Canada R3P 2H8
Phone: 1-866-300-1110
Fax: 1-204-284-1868
Web: www.wallaceintl.com

Description:		ALPHA GATE GENERIC SITE LAYOUT / CONDUIT REQUIREMENTS	
Customer / Project Name:			
Finish:		Date:	
-		9/6/2011	
Drawing No.		Rev.	Sheet:
ALPHA-DBL-09-06-11		A	2 of 5