

# Curtain Wall & Overhead Glazing



# Curtain Wall & Overhead Glazing

Kawneer offers a comprehensive line of architectural aluminum building products and systems for commercial construction – entrances, framing systems, windows and curtain wall systems. For over a century, Kawneer has been recognized as an innovator. Since that time, we've balanced experience with change and ongoing improvement. We strive every day to develop solutions that promote intergrated, sustainable building practices and we are dedicated to providing the tools our customers need to succeed. Thermal breaks, condensation management and building integrated photovoltaic (BIPV) and unitized curtain walls are just a few examples of how we have responded to customer needs.

## Hurricane Resistant Products

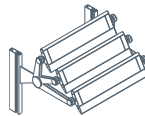
Kawneer offers single-source responsibility with a comprehensive group of independently tested, hurricane resistant products. Many have received Notices of Acceptance (NOAs) issued by Miami-Dade County BCCO and Florida State Approvals. Product testing continues. For more information, visit our website at Kawneer.com.

## Custom Curtain Wall

Selected for the world's most recognized buildings  
Engineering and design expertise | Worldwide manufacturing and distribution | Established leadership in major applications around the world

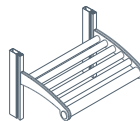
## 1600 PowerShade®

Provides optimal shade and single-source solution while generating solar power and reducing energy use  
Pre-engineered sunshade system effectively reduces solar heat gain | Exclusive dual position pivot system provides optimal angle and extension for shading any location | Produces power/reduces energy consumption and building operating cost | Conserves valuable natural resources, is silent and pollution free | Can be directly connected to 1600 Wall System®1, providing single-source responsibility and total system solution



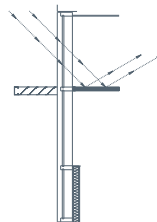
## 1600 SunShade®

An economical, pre-engineered and integrated sunshade with mix-and-match design choices  
Standard sunshade that integrates easily into outside glazed 1600 Wall System®1 or inside glazed 1600 Wall System®5 | Shades interiors and conserves energy with a 30" projection | Creates considerable savings in fabrication and attachment time compared with custom sunshades, thus allowing use on any building | Provides a single-source solution | Outriggers, fascia caps and louvers are available in several shapes



## InLighten® Light Shelf

Reduces the need for artificial lighting by passively channeling natural daylight into an occupied space  
Light shelf features aluminum chassis and painted Aluminum Composite Material (ACM) panel surfaces | Attaches directly to 1600 Wall System®1 and System®2 | Two designs include fascia cap or continuous panel "Rout and Return" | Four standard and custom fascia profiles available



1600 Wall System®1, 1600 Wall System®2, 2250 IG (Inside Glazed) with GLASSvents  
W - Dallas Victory Hotel and Residences, Dallas, Texas  
Architect: HKS, Inc., Dallas, Texas  
Glazing Contractor: Win-Con Enterprises, New Braunfels, Texas



1600 Wall System®2 with 1600 SunShade®  
Arkansas Department of Environmental Quality, Little Rock, Arkansas  
Leed Certification - Gold  
Architects: Taggart Foster Currence Gray Architects, Inc., North Little Rock, Arkansas and Williams & Dean Associated Architects, Little Rock, Arkansas  
Glazing Contractor: ACE Glass Co., Inc., Little Rock, Arkansas



1600 Wall System®1 and 1600 Wall System®2  
Geisinger Center for Health Research, Danville, Pennsylvania  
Leed Certification - Silver  
Architect: EwingCole, Philadelphia, Pennsylvania  
Glazing Contractor: King Glass Company, Exeter, Pennsylvania



1600 Wall System®3, 1600 Wall System®4, with AA®3900 Thermal Sliding Doors, 2000T Terrace Doors and 350 Medium Stile Entrances  
Glass House, Denver, Colorado  
Architect: The Preston Partnership, LLC, Atlanta, Georgia  
Glazing Contractor: El Paso Glass Company - Denver, Aurora, Colorado

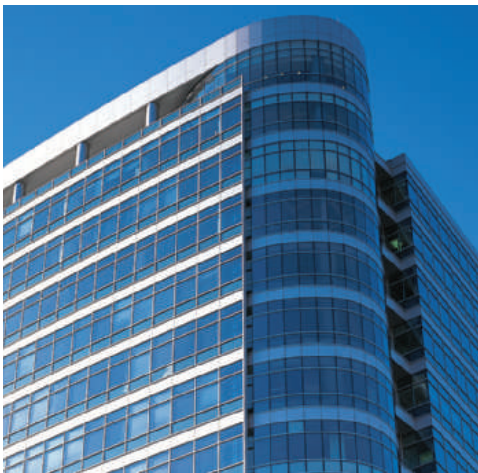
**1600 PowerWall® and 1600 PowerSlope®**

Combines 1600 Wall System®1 and 1600 S.G. and photovoltaic (PV) panels that convert light energy from the sun directly into electricity without using fossil fuels  
Conserves valuable natural resources – silent and pollution free | Reduces energy purchased from electric utility especially during peak demand periods | Fully compatible with 1600 Wall System®1 and 1600 S.G. (Sloped Glazing) for incorporating into vertical and sloped glazed applications | Available in a range of sizes compatible with building requirements | Installed with standard glazing procedures and equipment | Easy maintenance



**1600 Wall System®1 and 1600 Wall System®2**  
Reliable systems with versatile features

These are pressure equalized curtain wall systems for low to mid-rise applications  
System®1 is an outside glazed, captured curtain wall  
System®2 is an outside glazed and structural silicone glazed curtain wall  
The captured and SSG versions can be used independently or together | Concealed fastener joinery creates a smooth, monolithic appearance | Continuous thermal separator reduces heat gain and loss | Dual finish options, allowing different interior and exterior color finishes | Standard 6", 7-1/2" and 10-1/2" overall system depths | 1600 Wall System®1 and System®2 have been tested for hurricane resistance for both large and small missile impacts | Blast tested to ASTM F 1642 standards



2500 PG Unitwall™  
Cathedral Place, Milwaukee, Wisconsin  
Architect: Solomon Cordwell Buenz, Chicago, Illinois  
Glazing Contractor: Lurie Glass, Milwaukee, Wisconsin

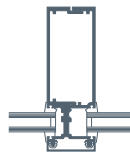
**1600 Wall System®3 and 1600 Wall System®4**  
Inside/outside glazed curtain wall system

System®3 has a 2-1/2" profile  
System®4 has a 2-1/4" profile  
Incorporates IsoStrut® Thermal Break for superior structural and thermal performance | Design flexibility allows a structural silicone glazing option | Integral exterior cover and thermal isolator reduce installed cost | Inside glazing reduces installation costs | Outside glazing option for spandrel re-glazing



**1600 Wall System®5**

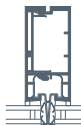
An inside glazed curtain wall/ribbon window system  
2-1/2" profile | Offered in 7-1/2" system depth and optional 6" system depth | Shear block construction for fabrication versatility | Structural silicone glazed option | Optional split mullion design with screw spline construction for ease of installation and fabrication | Allows two-color design options | Thermally improved



Modified version of 1600 SS™ (Screw Spline)  
Stockton Arena, Stockton, California  
Architect: 360 Architecture, Kansas City, Missouri  
Glazing Contractor: Carmel Architectural Sales, Anaheim, California

**2500 PG Unitwall™**

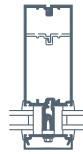
A high-performance unitized curtain wall system  
Available in stock length, fabricated or pre-assembled and glazed units | Unitized construction accelerates installation | Available systems include 4-sided captured, vertical and horizontal SSG (Structural Silicone Glazed) or 4-sided SSG | 2-1/2" x 7-1/2" profile | Suitable for new construction or remodel | Fully tested including thermal and acoustic | Dual finish capabilities



### 1600 SS™ (Screw Spline)

Shop assembled for faster field installation

Outside glazed captured or SSG Curtain Wall | Concealed screw spline joinery allows for shop assembly | Unique interlocking mullion design eliminates the need for anti-buckling clips | System depths and sightline match 1600 Wall System®1 and System®2



### 7500 Wall®

Exceptional thermal performance and resistance to condensation

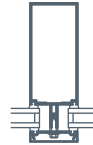
Incorporates high-performance ISOWEB® thermal break | Accommodates 1" double glazed or 2" triple glazed insulating glass units | Exterior pressure glazed system



### 1600 L-R (Low-Rise) Wall®

Economical stock length system for low-rise applications

Outside glazed pressure plate system available in captured or two-sided vertical SSG option | Standard 5-3/4" or 7-1/4" depth systems | Accepts either 1/8", 1/4" or 1" infills | Shear block construction utilizing concealed fasteners



### 2250 L-R (Low-Rise) Wall

The economical system designed for low-rise applications

2250 L-R has a 2-1/4" sightline

2500 L-R has a 2-1/2" sightline

Economical stick system with no compromise performance

| Utilizes a polymer thermal clip, allowing for easier installation and labor savings | Concealed fastener joinery for an unbroken appearance | Accepts either 1/4" or 1" infills | Design flexibility allows a structural silicone glazed option | Mullion drained design



### 2250 IG (Inside Glazed)

An economical, inside glazed ribbon window/curtain wall system

Narrow 2-1/4" profile | Offered in 4-1/2", 6" and 7-1/2" system depths | Shear block and screw spline construction for easy fabrication | Structural silicone glazed option | Allows two-color design options | Thermally improved



## Finishes

### Anodized Finishes

Long-lasting, protective coatings resist abrasion, corrosion, UV rays and meet or exceed AAMA 611

### Architectural Metals

Light Satin is a Class I finish with a chrome-like brightness and light brushed texture |

Available on 1600 Wall System®1 curtain wall pressure plate cover

### Clear Finishes

Available in Class I (#14 Clear) and Class II (#17 Clear)

### Permanodic® Finishes

Available in Color Anodized Class I (#40 Dark Bronze, #29 Black, #28 Medium Bronze, #26 Light Bronze and #18 Champagne)

### Painted Finishes

Fluoropolymer Coatings – Enduring color with high performance and durability

Available in many standard choices and unlimited custom colors | These include Fluropon®\* and Permادize® finishes, which meet or exceed AAMA 2604 or AAMA 2605

Powder Coatings – Create a "green" element with solvent-free high performance, durability and scratch resistance

Available in 31 standard colors | Interpon®\*\* D2000 Advance Powder Coatings, which meet or exceed AAMA 2604 or 2605

\* Fluropon is a registered trademark of The Valspar Corporation

\*\* Interpon is a registered trademark of Akzo Nobel

### Notice

Laws and Building and Safety Codes governing the design and use of windows, glazed entrance, framing, curtain wall and overhead glazing products vary widely. Kawneer does not control the selection of product configuration, operating hardware or glazing materials, and assumes no responsibility thereof.

Information contained in this catalog is subject to change without notice.

Kawneer Original Designs and Structures are fully protected by U.S. Patents and Patents Pending.

### Other Products from Kawneer

Entrances & Framing 08 41 00/KAW; Windows 08 51 00/KAW in Sweet's.

### For More Information

Visit our website at Kawneer.com for more detailed information, including the most current Guide Specifications, CAD libraries and BIM product models.

## Overhead Glazing

### 1600 S.G. (Sloped Glazing) and 2000 Skylight

Curtain wall performance in overhead glazing systems

Stick system – fully factory fabricated | Silicone glazed or captured Purlin options | Flush grid exterior has a 2-1/2" sightline | Various mullion depths to meet wind and snow loads | Handles hip and valley rafter applications

Cover photo:

7500 Wall® with 2000 Skylight

PCL Centennial Learning Centre, Edmonton, Alberta, Canada

Lead Certification - Gold

Architect: Cohos Evamy integratedesign™, Edmonton, Alberta, Canada

Glazing Contractor: Beacon Glass Products Ltd., St. Albert, Alberta, Canada

Albert, Alberta, Canada

Kawneer Company, Inc.  
Technology Park / Atlanta  
555 Guthridge Court  
Norcross, GA 30092

kawneer.com  
kawneergreen.com  
770 . 449 . 5555