

Windows



Windows

Kawneer offers a comprehensive line of architectural aluminum building products and systems for commercial construction – entrances, framing systems, windows and curtain wall systems. For over a century, Kawneer has been recognized as an innovator. Since that time, we've balanced experience with change and ongoing improvement. We strive every day to develop solutions that promote integrated, sustainable building practices and we are dedicated to providing the tools our customers need to succeed. Innovative thermal breaks and historic restoration are just a few examples of how we have responded to customer needs.

Hurricane Resistant Products

Kawneer offers single-source responsibility with a comprehensive group of independently tested, hurricane resistant products. Many have received Notices of Acceptance (NOAs) issued by Miami-Dade County BCCO and Florida State Approvals. Product testing continues. For more information, visit our website at Kawneer.com.

AA®3350 ISOPORT® Window

Enhance Your Views with Exceptional Value and Performance

Available as fixed, single hung, or double hung | Tested for CW and AW performance standards | 3-1/2-inch frame depth | The unique shape of the polyamide thermal break enhances the performance of the window by maintaining the continuity of the thermal break throughout the window frame and sash | Class 5 heavy duty balances | Factory silicone glazed | Optional between the glass muntin grids | Zinc die cast sweep locks | Optional insect screens | Interior and exterior dual finish options

8400TL IsoLock® Window

For remodel, historic restoration or new construction requiring thermal performance, aesthetic appeal and enough choices to appear custom

Available as fixed, single hung, double hung or horizontal sliding | Tested for Heavy Commercial and Architectural Window Performance Class and Grade | Master frame depth of 4" – ideal for heavy-duty applications requiring added strength and security | IsoLock® Thermal Break mechanically/adhesively bonds to aluminum frame and prevents dry shrinkage | Block and tackle balances | Factory silicone glazed | Optional exterior applied or between-the-glass muntins | Standard flat face or beveled historical designs | Optional insect screens | Cast white bronze hardware | Large and small missile hurricane impact and cycle tested (single hung) | Blast tested per ASTM F 1642 & GSA-TS01-03 (single hung and horizontal sliding)

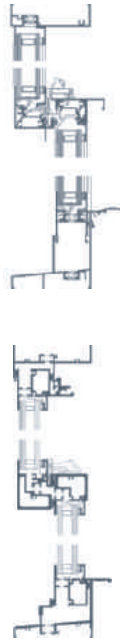
AA®900 ISOWEB® Window

Contemporary styling designed for thermal performance

Available as fixed, projected or casement | Improved thermal performance developed specifically for climates subject to temperature extremes | Contemporary Euro-Groove mounted hardware simplifies attachment | Unique corner joinery provides consistent "picture frame" sightlines | Factory silicone glazed | Two-color finish option available | Single handle multipoint locking | Large and small missile hurricane impact and cycle tested (fixed, casement swing out and project out vent)



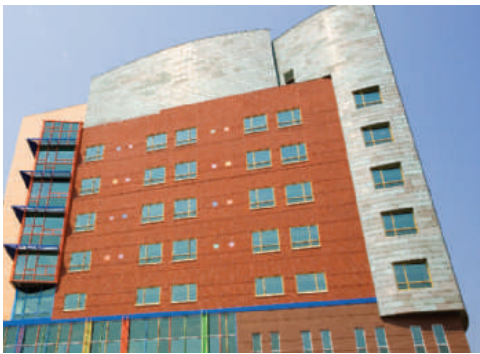
7225 (Non-Thermal) Windows
China Coal Building, Shanghai, China
Architect: East China Architectural Design Institute, Shanghai, China
Glazing Contractor: Wah Heng Glass, Shanghai, China



8400TL IsoLock® Single Hung Windows
Converse Hall, James Madison University, Harrisonburg, Virginia
Architect: Moseley Harris & McClintock, Harrisonburg, Virginia
Glazing Contractor: Glass & Metals, Inc., Harrisonburg, Virginia



8225TL IsoLock® Windows
North Schuylkill Elementary School, Ashland, Pennsylvania
Architect: E. I. Associates, Harrisburg, Pennsylvania
Glazing Contractor: Empire Paint & Glass, Pottsville, Pennsylvania



8225TL IsoLock® Windows
 Children's Hospital of Pittsburgh of UPMC,
 Pittsburgh, Pennsylvania
 Seeking LEED Certification
Architect: Astorino, Pittsburgh, Pennsylvania
Glazing Contractor: D-M Products Inc,
 Bethel Park, Pennsylvania



**8225TL IsoLock® Window and
 7225 Non-Thermal Window**

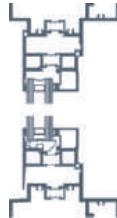
08 51 00/KAW
BuyLine 1572

For high performance in a thermally broken window system

Available as projected, casement, and fixed | Tested for Heavy Commercial and Architectural Window Performance Class and Grade | 2-1/4" frame depth | Factory silicone glazed | IsoLock® Thermal Break mechanically/adhesively bonds to aluminum frame and prevents dry shrinkage | Optional dual glazing with or without venetian blinds | Large and small missile hurricane impact and cycle tested (fixed over project out)



8325TL IsoLock® Windows
 West Campus Residence, Northeastern University,
 Boston, Massachusetts
Architect: William Rawn Associates Architects, Inc.,
 Boston, Massachusetts
Glazing Contractor: Salem Glass Company,
 Salem, Massachusetts



8225TLXO IsoLock® Window

For applications requiring a deeper frame section

Available as fixed, projected and casement | Tested for Heavy Commercial and Architectural Window Performance Class and Grade | 2-1/4" deep ventilator, 4-1/2" deep frame | 1/8" nominal wall thickness | Offset appearance | Innovative IsoLock® Thermal Break mechanically/adhesively bonds to aluminum frame and prevents dry shrinkage | Factory silicone glazed | Optional dual glazing with or without venetian blinds



5200 (Non-Thermal) Windows
 Matsushita Electric Corp. of America, Elgin, Illinois
Architect: HOK, Inc., Dallas, Texas
Glazing Contractor: National Glass & Mirror Co.,
 Beloit, Wisconsin



8225TLF IsoLock® Window

For applications requiring natural ventilation and thermal performance

Available as fixed, projected, and casement | A Heavy Commercial Grade window with a flush frame and vent design | Suitable for any building application from low- to high-rise including new and remodel construction | 2-1/4" frame depth | IsoLock® polyurethane thermal break for insulating glass | Factory glazed | Optional dual glazing with or without Venetian blinds | Tested to both HC and AW high performance standards



6200T IsoLock® Windows
 Chapin Hall, Chicago, Illinois
Architect: Chicago Associates Planners & Architects
 (CAPA), Chicago, Illinois
Glazing Contractor: Capitol Glass & Architectural
 Metals, Inc., Elk Grove Village, Illinois



8325TL IsoLock® Window

For high performance with optional triple glazing

Available as fixed, projected and casement | Tested for Commercial, Heavy Commercial and Architectural Window Performance Class and Grade | Meets or exceeds performance standards of NAFS-08 (AAMA/WDMA/CSA 101/I.S.2/A440-08) | 3-1/4" frame depth | Innovative IsoLock® Thermal Break design mechanically/adhesively bonds the thermal break to the aluminum frame and prevents dry shrinkage | Factory silicone glazed | Optional dual and triple glazing with or without venetian blinds | Blast tested per ASTM F1642

6200T IsoLock® Window and 5200 Non-Thermal Window

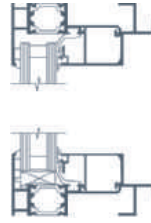
For high performance yet cost-effective windows

Available as fixed, projected and casement | Tested for Commercial Performance Class and Grade | 1-7/8" frame depth | Conditioned thermal pockets mechanically bond to aluminum frame and prevent dry shrinkage | Factory silicone glazed

5500 and 5525 ISOWEB® Thermal Windows

Highest thermal performing for punched openings and ribbon windows

Accommodates projected and casement ventilators | Meets or exceeds performance standards of ANSI/AAMA/NWDA 101/I.S. 2-97, CAN/CSA A440-M90 and NAFS-02 | 4" frame depth (5500); 5" frame depth (5525) | Flush appearance with extreme frontal placement of glass | ISOWEB® fiberglass-reinforced thermal break provides low thermal transmittance, high condensation resistance and eliminates dry shrinkage | Vented rain screen design | Dual finish options, allowing different interior and exterior color finishes | Interfaces with building vapor barrier to ensure the continuity of seal at window perimeter



Storefront GLASSvent Visually Frameless Ventilator

For use with all storefront systems

Eliminates added exterior sightline of typical ventilator when installed into a storefront framing system | Available as Project-Out or Outswing Casement Window | Retrofit capability | Accepts 1/4" to 1" glazing infill | Factory glazing | Meets or exceeds performance standards of NAFS 1, ANSI/AAMA/NWDA 101/I.S. 2-97



Curtain Wall GLASSvent Visually Frameless Ventilator

For use with all curtain wall systems

Eliminates added exterior sightline of typical ventilator when installed into a curtain wall system | Available as Project-Out or Outswing Casement Window | Retrofit capability | Accepts 1/4" to 1" glazing infill | Tested according to AAMA 501 at 50 psf | Factory glazing | Blast tested per ASTM F1642



Modified 2500 PG Unitwall™ with GLASSvent at tower and 518 ISOPORT® Window Framing with 526 ISOPORT® Vents at podium
Woodsworth College Residence, University of Toronto, Toronto, Ontario, Canada
Architect: architectsAlliance, Toronto, Ontario, Canada
Glazing Contractor: Ferguson-Neudorf Glass, Inc., Beamsville, Ontario, Canada

For information on 516 ISOPORT® / 518 ISOPORT® Windows and 526 ISOPORT® Vents, visit Kawneer.com.

Finishes

Anodized Finishes

Long-lasting, protective coatings resist abrasion, corrosion, UV rays and meet or exceed AAMA 611

Clear Finishes

Available in Class I (#14 Clear)

Permanodic® Finishes

Available in Color Anodized Class I (#40 Dark Bronze, #29 Black, #28 Medium Bronze, #26 Light Bronze and #18 Champagne)

Painted Finishes

Fluoropolymer Coatings – Enduring color with high performance and durability

Available in many standard choices and unlimited custom colors | These include Permafluor™ and Permadize® finishes, which meet or exceed AAMA 2604 or AAMA 2605

Powder Coatings – Create a “green” element with solvent-free high performance, durability and scratch resistance

Available in 23 standard colors | Powder Coatings meet or exceed AAMA 2604 or 2605

Notice

Laws and Building and Safety Codes governing the design and use of windows, glazed entrance, framing, curtain wall and overhead glazing products vary widely. Kawneer does not control the selection of product configuration, operating hardware or glazing materials, and assumes no responsibility thereof.

Information contained in this catalog is subject to change without notice.

Kawneer Original Designs and Structures are fully protected by U.S. Patents and Patents Pending.

Other Products from Kawneer

Entrances & Framing 08 41 00/KAW; Curtain Wall & Overhead Glazing 08 44 00/KAW in Sweets.

For More Information

Visit our website at Kawneer.com for more detailed information, including the most current Guide Specifications, CAD libraries and BIM product models.

Cover photo:

8225TL IsoLock® Windows in Trifab® VG 451T (Thermal) Center and Front Glazed Framing
Lewis and Clark State Office Building,
Jefferson City, Missouri
LEED Certification - Platinum
Architect: BNIM Architects, Kansas City, Missouri
Glazing Contractor: Brady's Jefferson City Glass & Paint Co., Jefferson City, Missouri

Kawneer Company, Inc.
Technology Park / Atlanta
555 Guthridge Court
Norcross, GA 30092

kawneer.com
kawneergreen.com
770 . 449 . 5555

 **KAWNEER**
AN ALCOA COMPANY