

# Windows



# Windows

Kawneer offers a comprehensive line of architectural aluminum building products and systems for commercial construction – entrances, framing systems, windows and curtain wall systems. For over a century, Kawneer has been recognized as an innovator. Since that time, we've balanced experience with change and ongoing improvement. We strive every day to develop solutions that promote intergrated, sustainable building practices and we are dedicated to providing the tools our customers need to succeed. The trusted Kawneer name along with patented thermal breaks and historic restoration are just a few examples of how we have responded to customer needs.

## Hurricane Resistant Products

Kawneer offers single-source responsibility with a comprehensive group of independently tested, hurricane resistant products. Many have received Notices of Acceptance (NOAs) issued by Miami-Dade County BCCO and Florida State Approvals. Product testing continues. For more information, visit our website at Kawneer.com.

## AA®900 ISOWEB® Window

Contemporary styling designed for thermal performance Improved thermal performance developed specifically for climates subject to temperature extremes | Contemporary Euro-Groove mounted hardware simplifies attachment | Unique corner joinery provides consistent "picture frame" sightlines | Hot melt factory glazing | Two-color finish option available | Single handle multipoint locking | Ideal for health care and educational facilities, office buildings, condominiums – anywhere comfort is paramount | Hurricane impact and cycle tested

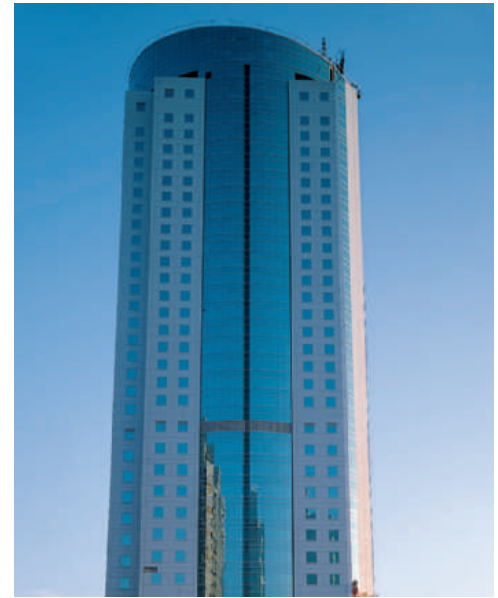
## 8400TL IsoLock® Window

For remodel, historic restoration or new construction requiring thermal performance, aesthetic appeal and enough choices to appear custom

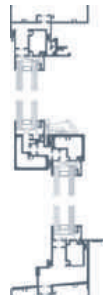
Available as fixed, offset fixed, single hung, double hung or horizontal sliding | Tested for Heavy Commercial and Architectural Window Performance Class and Grade | Master frame depth of 4" – ideal for heavy-duty applications requiring added strength and security | A combination of the patented IsoLock® Thermal Break in the master frame and conditioned thermal pockets in the sash mechanically and adhesively bond to the aluminum frame and prevent dry shrinkage | Block and tackle balances | Hot melt factory glazing | Optional true, applied or between-the-glass muntins | Standard flat face or beveled historical designs | Optional insect screens | Cast white bronze hardware | Hurricane impact and cycle tested

## 8225TL IsoLock® Window and 7225 Non-Thermal Window

For high performance in a thermally broken window system Available as projected, casement, top hinged and fixed | Tested for Heavy Commercial and Architectural Window Performance Class and Grade | 2-1/4" frame depth | Hot melt factory glazing | IsoLock® Thermal Break mechanically/adhesively bonds to aluminum frame and prevents dry shrinkage | Optional dual glazing with or without venetian blinds | Large and small missile hurricane impact and cycle tested (fixed over project out)



7225 (Non-Thermal) Windows  
China Coal Building, Shanghai, China  
Architect: East China Architectural Design Institute, Shanghai, China  
Glazing Contractor: Wah Heng Glass, Shanghai, China



8400TL IsoLock® Single Hung Windows  
Converse Hall, James Madison University, Harrisonburg, Virginia  
Architect: Moseley Harris & McClintock, Harrisonburg, Virginia  
Glazing Contractor: Glass & Metals, Inc., Harrisonburg, Virginia



8225TL IsoLock® Windows  
North Schuylkill Elementary School, Ashland, Pennsylvania  
Architect: E. I. Associates, Harrisburg, Pennsylvania  
Glazing Contractor: Empire Paint & Glass, Pottsville, Pennsylvania





**8325TL IsoLock® Windows**  
 West Campus Residence, Northeastern University,  
 Boston, Massachusetts  
**Architect:** William Rawn Associates Architects, Inc.,  
 Boston, Massachusetts  
**Glazing Contractor:** Salem Glass Company,  
 Salem, Massachusetts



**8325TL IsoLock® Window**

For high performance with optional triple glazing

Available as fixed, projected and casement

| Tested for Heavy Commercial and Architectural Window Performance Class and Grade | Meets or exceeds performance standards of NAFS-08 (AAMA/WDMA/CSA 101/I.S.2/A440-08) |

3-1/4" frame depth | Patented IsoLock® Thermal Break design mechanically/adhesively bonds the thermal break to the aluminum frame and prevents dry shrinkage | Hot melt factory glazing | Optional dual and triple glazing with or without venetian blinds | Blast tested per ASTM F1642

**08 51 00/KAW**  
**BuyLine 1572**

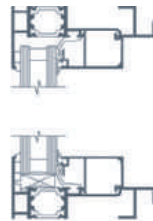


**8225TL IsoLock® Windows**  
 Children's Hospital of Pittsburgh of UPMC,  
 Pittsburgh, Pennsylvania  
 Seeking LEED Certification  
**Architect:** Astorino, Pittsburgh, Pennsylvania  
**Glazing Contractor:** D-M Products Inc,  
 Bethel Park, Pennsylvania



**6200T IsoLock® Window and 5200 Non-Thermal Window**  
 For high performance yet cost-effective windows

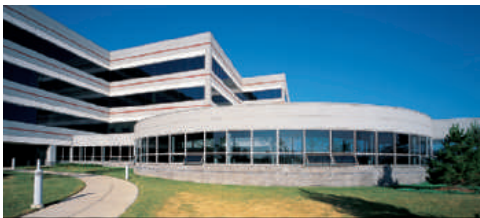
Available as fixed, projected and casement | Tested for Commercial Performance Class and Grade | 1-7/8" frame depth | Conditioned thermal pockets mechanically bond to aluminum frame and prevent dry shrinkage | Hot melt factory glazing



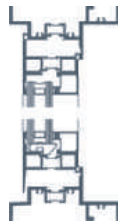
**5500 and 5525 ISOWEB® Thermal Windows**

Highest thermal performing for punched openings and ribbon windows

Accommodates projected and casement ventilators | Meets or exceeds performance standards of ANSI/AAMA/NWWDA 101/I.S. 2-97, CAN/CSA A440-M90 and NAFS-02 | 4" frame depth (5500); 5" frame depth (5525) | Flush appearance with extreme frontal placement of glass | ISOWEB® glass-reinforced thermal break provides low thermal transmittance, high condensation resistance and eliminates dry shrinkage | Vented rain screen design | Dual finish options, allowing different interior and exterior color finishes | Interfaces with building vapor barrier to ensure the continuity of seal at window perimeter



**5200 (Non-Thermal) Windows**  
 Matsushita Electric Corp. of America, Elgin, Illinois  
**Architect:** HOK, Inc., Dallas, Texas  
**Glazing Contractor:** National Glass & Mirror Co.,  
 Beloit, Wisconsin



**8225TLXO IsoLock® Window**

For applications requiring a deeper frame section

Available as fixed, projected and casement | Tested for Heavy Commercial and Architectural Window Performance Class and Grade | 2-1/4" deep ventilator, 4-1/2" deep frame | 1/8" nominal wall thickness | Offset appearance | Patented IsoLock® Thermal Break mechanically/adhesively bonds to aluminum frame and prevents dry shrinkage | Hot melt factory glazing | Optional dual glazing with or without venetian blinds



**6200T IsoLock® Windows**  
 Chapin Hall, Chicago, Illinois  
**Architect:** Chicago Associates Planners & Architects  
 (CAPA), Chicago, Illinois  
**Glazing Contractor:** Capitol Glass & Architectural  
 Metals, Inc., Elk Grove Village, Illinois

### Storefront GLASSvent Visually Frameless Ventilator

#### For use with all storefront systems

Eliminates added exterior sightline of typical ventilator when installed into a storefront framing system | Available as Project-Out or Outswing Casement Window | Retrofit capability | Accepts 1/4" to 1" glazing infill | Factory glazing | Meets or exceeds performance standards of NAFS 1, ANSI/AAMA/NWDA 101/I.S. 2-97



### Curtain Wall GLASSvent Visually Frameless Ventilator

#### For use with all curtain wall systems

Eliminates added exterior sightline of typical ventilator when installed into a curtain wall system | Available as Project-Out or Outswing Casement Window | Retrofit capability | Accepts 1/4" to 1" glazing infill | Tested according to AAMA 501 at 50 psf | Factory glazing | Blast tested per ASTM F1642



Modified 2500 PG Unitwall™ with GLASSvent at tower and 518 ISOPORT® Window Framing with 526 ISOPORT® Vents at podium  
Woodsworth College Residence, University of Toronto, Toronto, Ontario, Canada  
Architect: architectsAlliance, Toronto, Ontario, Canada  
Glazing Contractor: Ferguson-Neudorf Glass, Inc., Beamsville, Ontario, Canada

For information on 516 ISOPORT® / 518 ISOPORT® Windows and 526 ISOPORT® Vents, visit Kawneer.com.

## Finishes

### Anodized Finishes

Long-lasting, protective coatings resist abrasion, corrosion, UV rays and meet or exceed AAMA 611

#### Clear Finishes

Available in Class I (#14 Clear) and Class II (#17 Clear)

#### Permanodic® Finishes

Available in Color Anodized Class I (#40 Dark Bronze, #29 Black, #28 Medium Bronze, #26 Light Bronze and #18 Champagne)

### Painted Finishes

Fluoropolymer Coatings – Enduring color with high performance and durability

Available in many standard choices and unlimited custom colors | These include Fluropon®\* and Permazine® finishes, which meet or exceed AAMA 2604 or AAMA 2605

Powder Coatings – Create a “green” element with solvent-free high performance, durability and scratch resistance

Available in 31 standard colors | Interpon®\*\* D2000 Advance Powder Coatings, which meet or exceed AAMA 2604 or 2605

\* Fluropon is a registered trademark of The Valspar Corporation

\*\* Interpon is a registered trademark of Akzo Nobel

### Notice

Laws and Building and Safety Codes governing the design and use of windows, glazed entrance, framing, curtain wall and overhead glazing products vary widely. Kawneer does not control the selection of product configuration, operating hardware or glazing materials, and assumes no responsibility thereof.

Information contained in this catalog is subject to change without notice.

Kawneer Original Designs and Structures are fully protected by U.S. Patents and Patents Pending.

### Other Products from Kawneer

Entrances & Framing 08 41 00/KAW; Curtain Wall & Overhead Glazing 08 44 00/KAW in Sweets.

### For More Information

Visit our website at Kawneer.com for more detailed information, including the most current Guide Specifications, CAD libraries and BIM product models.

### Cover photo:

7225 Non-Thermal Project-Out Windows in 2250 IG curtain wall, with 1600 Wall System®1 and 500 Wide Stile Entrances

Lawrence Berkeley National Laboratory - Molecular Foundry, Berkeley, California  
LEED Certification - Gold

Architect: SmithGroup, San Francisco, California  
Glazing Contractor: Royal Glass Co., Inc., Sacramento, California

Kawneer Company, Inc.  
Technology Park / Atlanta  
555 Guthridge Court  
Norcross, GA 30092

kawneer.com  
kawneergreen.com  
770 . 449 . 5555

 **KAWNEER**  
AN ALCOA COMPANY